

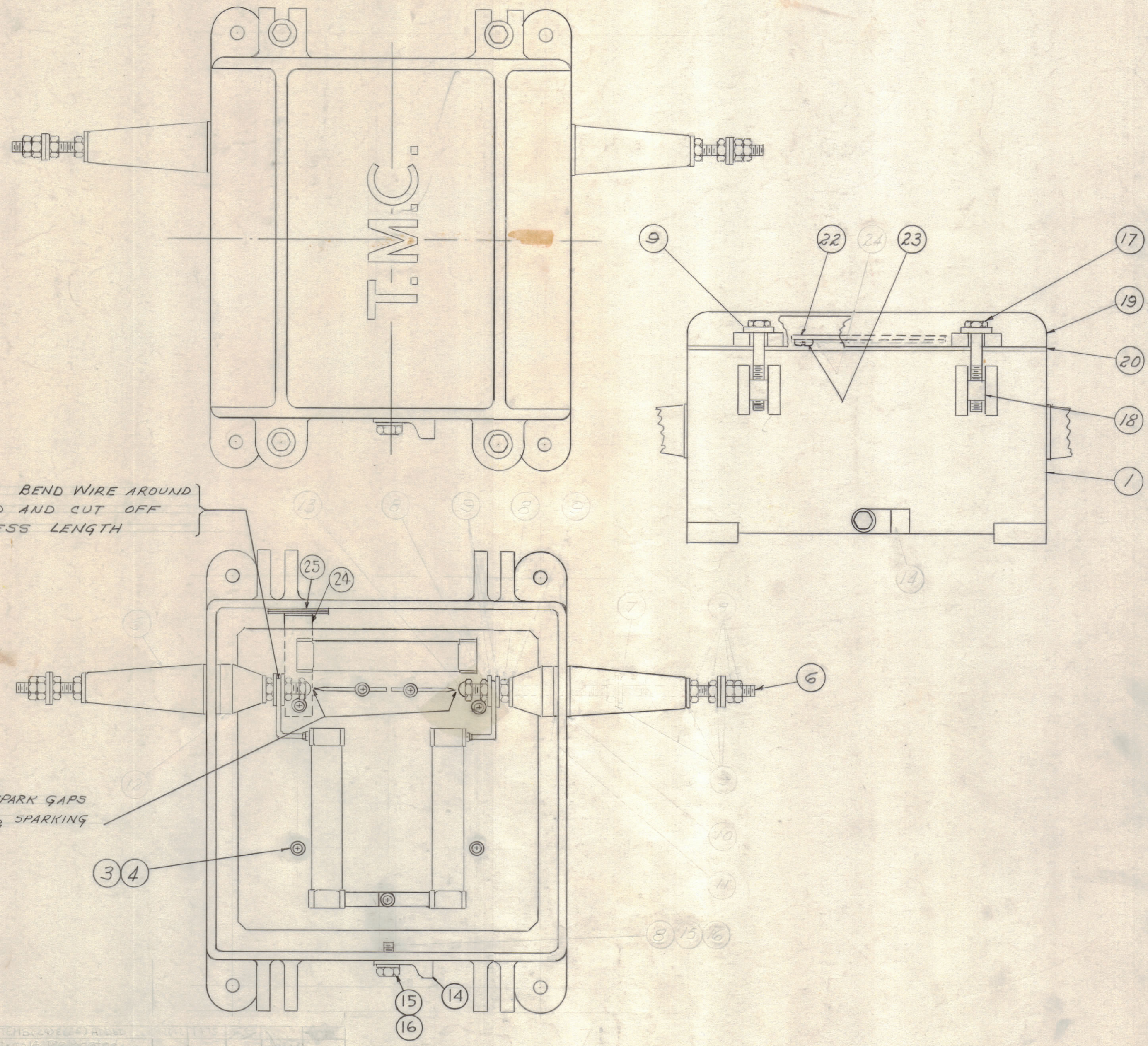
IF IT IS FOUND DESIRABLE TO CHANGE ANY TOLERANCE OR OTHER DETAIL SPECIFIED ON THIS DRAWING NOTIFY THE PURCHASER PROMPTLY.

MAXIMUM ALLOWABLE TOLERANCES HAVE BEEN DETERMINED AND DEVIATIONS WILL BE CAUSE FOR REJECTION. REMOVE ALL BURRS AND SHARP EDGES

NOTICE TO PERSONS RECEIVING THIS DRAWING

THE TECHNICAL MATERIEL CORPORATION claims proprietary right in the material disclosed hereon. This drawing is issued in confidence for engineering information only and may not be reproduced or used to manufacture anything shown hereon without permission from THE TECHNICAL MATERIEL CORPORATION to the user. This drawing is loaned for mutual assistance and is subject to recall at any time.

Property of:
THE TECHNICAL MATERIEL CORPORATION
MAMARONECK, NEW YORK



2	25	AD-101-1/6	DESICANT
1	24	MS-933	HOLDER, DESICANT
4	23	SFBO256SN4	SCREW, THREAD CUTTING
1	22	LD-443	SCHEMATIC DIAGRAM
X	21	GL-101-2	CEMENT, PLIOBOND

A-1561 F

1	20	GA-103	GASKET, COVER
1	19	PM-105	COVER
4	18	PM-100	PIN, COVER BOLT
4	17	SCHH2520SS28	BOLT, HEX.
1	16	LWS25MSS	LOCKWASHER, SPLIT
1	15	SCHH2520SS8	BOLT, HEX.
1	14	TE-178-2	TERM, ELECTRICAL
	13	DELETED	
	12	DELETED	
	11	DELETED	
	10	DELETED	
4	9	FW25H55	WASHER, FLAT
	8	DELETED	
	7	DELETED	
2	6	A-102	INSULATOR ASSY.
	5	DELETED	
4	4	LWE08MRN	LOCKWASHER, EXT.
4	3	SCBP0832BN6	SCREW, MACHINE
1	2	A-1560	RESISTOR BOARD ASS'Y
1	1	PM-122	CASE, MACHINING

REQ. ITEM	PART NO.	DESCRIPTION	SYMBOL
		THE TECHNICAL MATERIEL CORP.	
		MAMARONECK, NEW YORK	
STOCK SIZE			
MATERIAL		WEIGHT PER PC.	
TYPE & TEMPER			
HEAT TREAT. SPEC.			
FINISH & SPEC. NO.			

1	REVISIONS	DATE	BY	CHKD	APP'D
1	AS SHOWN	12/21/64
2

ISSUE	ITEM	CHANGED FROM	DATE	CN. NO.	DRAFTS	CHECKER	ENG. APP.
E	1	HARDWARE CLARIFIED	3-22-63	B604	EC

1	RTB-3	PROJECT NO.	ASS'Y. NO.	DATE
REQ PER UNIT	MODEL	PROJECT NO.	ASS'Y. NO.	DATE
USED ON				