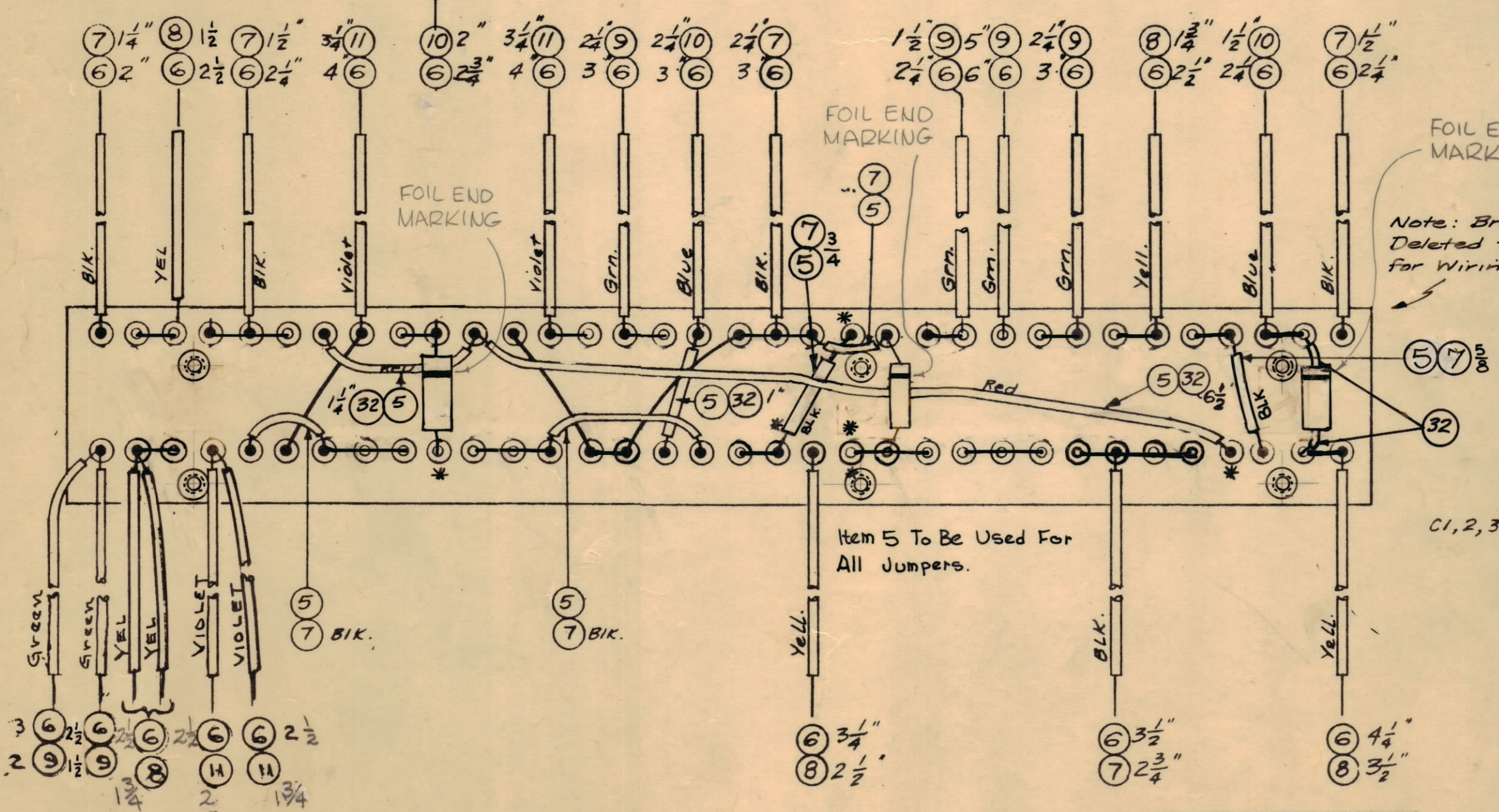
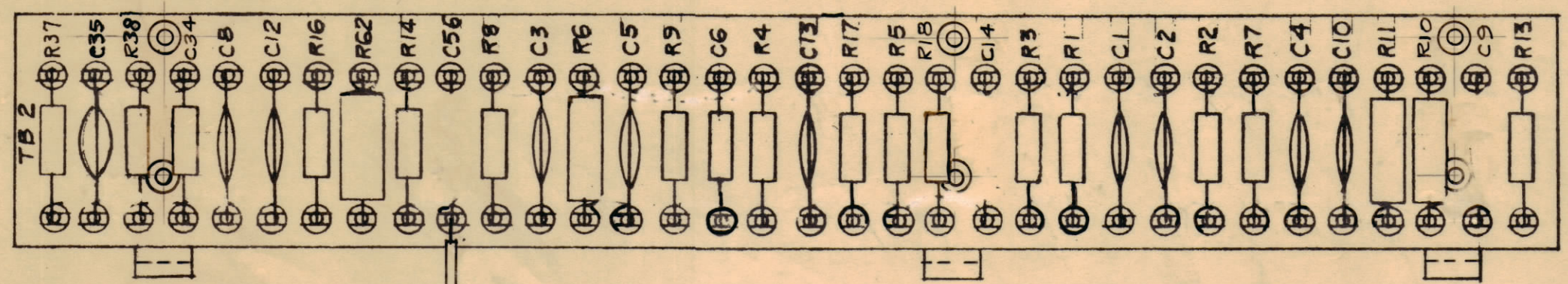
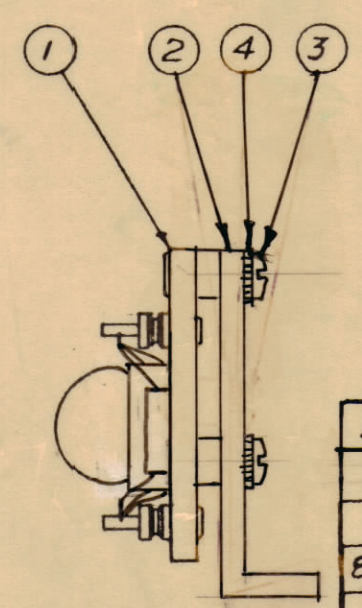


IF IT IS FOUND DESIRABLE TO CHANGE ANY TOLERANCE OR OTHER DETAIL SPECIFIED ON THIS DRAWING NOTIFY THE PURCHASER PROMPTLY.  
 MAXIMUM ALLOWABLE TOLERANCES HAVE BEEN DETERMINED AND DEVIATIONS WILL BE CAUSE FOR REJECTION. REMOVE ALL BURRS AND SHARP EDGES

**NOTICE TO PERSONS RECEIVING THIS DRAWING**  
 THE TECHNICAL MATERIEL CORPORATION claims proprietary right in the material disclosed hereon. This drawing is issued in confidence for engineering information only and may not be reproduced or used to manufacture anything shown hereon without permission from THE TECHNICAL MATERIEL CORPORATION. This drawing is loaned for mutual assistance and is subject to recall at any time.  
 Property of:  
 THE TECHNICAL MATERIEL CORPORATION  
 MAMARONECK, NEW YORK

Stamping to be 1/8" high black Gothic - Stamp before ass'y. of components.



2	35	CN-100-1	CAPACITOR, FIXED (.01)	C9
1	34	RC20GF223K	RESISTOR, FIXED, COMP	R37
1	33	CC-101-4	Capacitor, Fixed, Ceramic	C6
8 3/4	32	PX-104-3-.034	Insulation, Sleeving (Size 20)	Red
X	31	BS-100	Solder, Soft	
1	30	RC42GF223K	Resistor, Fixed, Comp.	R62
1	29	RC20GF121K		R38
1	28	RC20GF104K		R3
1	27	RC20GF106K		R18
1	26	RC20GF155K		R17
1	25	RC20GF103K		R14
1	24	RC20GF154K		R13
2	23	RC32GF223K		R11, R10, R8
2	22	RC20GF222K		R6
1	21	RC20GF471K		R7

A-1556 K

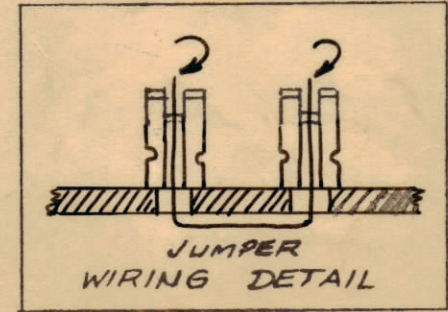
1	20	RC32GF683K		R6
1	19	RC20GF331K		R5
1	18	RC32GF223K		R4
2	17	RC20GF474K		R9, R2
1	16	RC20GF104K	Resistor, Fixed, Comp.	R1
1	15	CC215L300J	Capacitor, Fixed, Ceramic	C34
1	14	CN108C1003J	Capacitor, Fixed, Mylar	C14
1	13	CC-100-9	Capacitor, Fixed, Ceramic	C13
9	12	CC-100-16	Capacitor, Fixed, Ceramic	
7	11	PX-104-9-.034	Insulation, Sleeving (Size 20)	Violet
10	10	PX-104-6-.034		Blue
15	9	PX-104-4-.034		Green
12	8	PX-104-2-.034		Yellow
11	7	PX-104-1-.034	Insulation, Sleeving (Size 20)	Black
62	6	WL-100-7	Wire, Buss (Size 22)	
X	5	WL-100-8	Wire, Buss (Size 24)	
6	4	LWEOGMAN	Lockwasher, Ext.	
6	3	SCB506328NG	Screw, Machine	
3	2	MS-1321	Bracket, Angle, T.B.	
1	1	A-1572	Terminal Bd. No. 2 Sub-Ass'y.	

C1, 2, 3, 4, 5, 8, 10, 12, 35

Note: Brackets, item 2, Deleted from this view for Wiring Clarity.

F	1	ADDED 1/2 TO JUMPER LEADS C35 - C34	12-3 59	1612	J	HO	
E	1	16 WAS RC20GF334K ON C56	10/21/58	484	AK	AK	
D	1	DELIMITED GROUND DIRECTION STAMPED R38 WAS R32 (ERROR)	9/29/58	467	JLB	AK	
C	1	C9 & C56 Placed on 2Hm. of Board - Item 35 Added for C9 & C56 C9 & C56 WERE ITEM 12	9/10/58	449	16	PLK	
B	1	ITEM 3 & 4 WERE QUAN. 3 ITEM 2 WAS MS-1027 ITEM 1 WAS A-1366	8/28/58	437	16	PLK	
A	1						
ISSUE	ITEM	CHANGED FROM	DATE	CN. NO.	DRAFTS	CHECKER	ENG. APP.
TOLERANCES		SCALE:					
ALL OTHERS	DEC. DIM. ± FRAC. DIM. ± ANGULAR DIM. ±	DRILL, PUNCH, COMMERCIAL STOCK SIZES AND MANUFACTURERS TOLERANCES ARE NOT INCLUDED.					

\* - Do Not Solder These Connections on This Ass'y.  
 NOTE:  
 Assemble Foil Wound Condensers As Shown.



K	3	WIRE G INSUL. LENGTHS INCREASED, IT 6 THRU 11 ASSY. FOR CONDENSERS CLARIFIED. * SYM. ADD. (2 MORE PL)	3-545 13637	82	AK	
J	2	JUMPERS MOVED FR. TOP TO BOT. JUMPER WIRING & COMP. DETAIL REVISED	11.10.69 12840	16	WB	
H	1	Sleeving Added On R10, R11, R12, R13	8-10-68 6491	15		
G	5	ITEM 23 WAS RC30GF223K				
	4	ITEM 20 WAS RC30GF223K				
	3	ITEM 18 WAS RC30GF223K				
	2	ITEM 2 WAS LWEOGMAN				
	1	ITEM 3 WAS SCB506328NG				

1	MSR-4			6-24-58
REQ PER UNIT	MODEL	PROJECT NO.	ASSY. NO.	DATE
USED ON				

REQ. ITEM	PART NO.	DESCRIPTION	SYMBOL
THE TECHNICAL MATERIEL CORP. MAMARONECK, NEW YORK			
STOCK SIZE			
MATERIAL WEIGHT PER PC.			
TYPE & TEMPER			
HEAT TREAT. SPEC.			
FINISH & SPEC. NO.			
TERMINAL BOARD NO. 2 FINAL ASS'Y. & STAMPING 6-24-58 DRAWN: PLK ELEC. DES. APP.: [Signature] MECH. DES. APP.: [Signature] CHECKED: [Signature] FINAL APPROVAL: [Signature]			
A-1556 K			