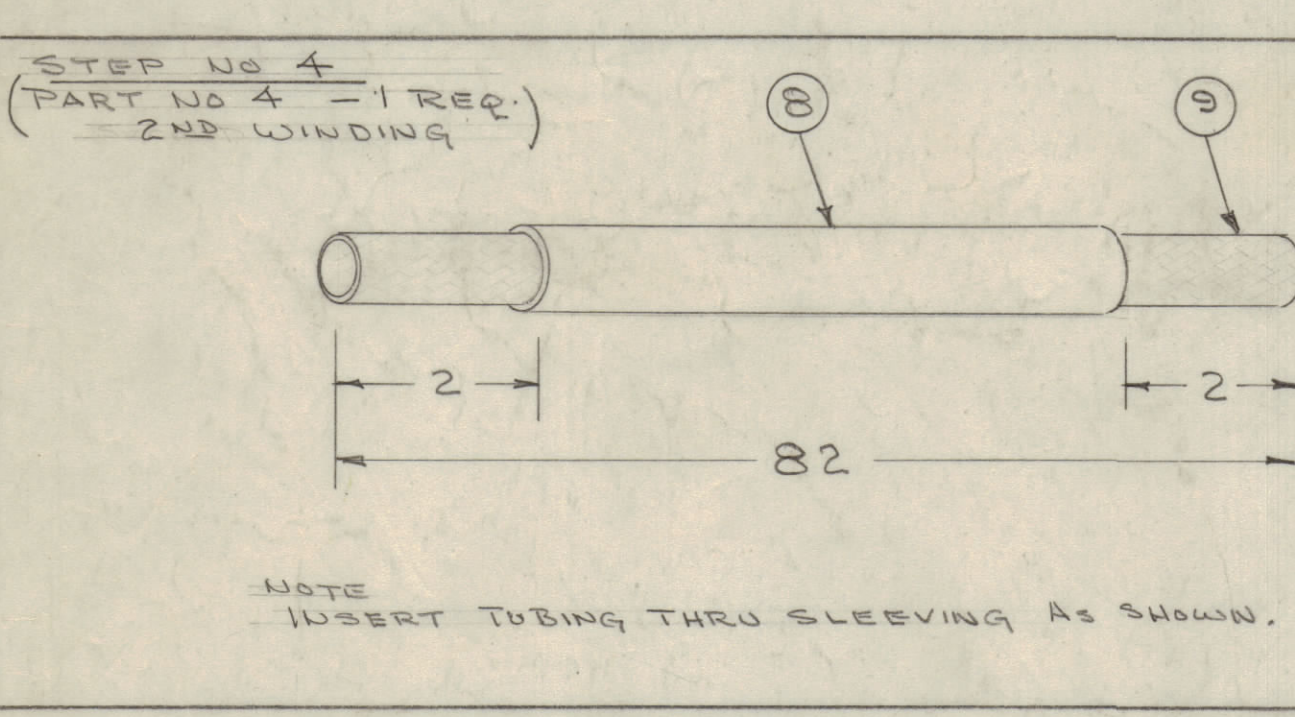
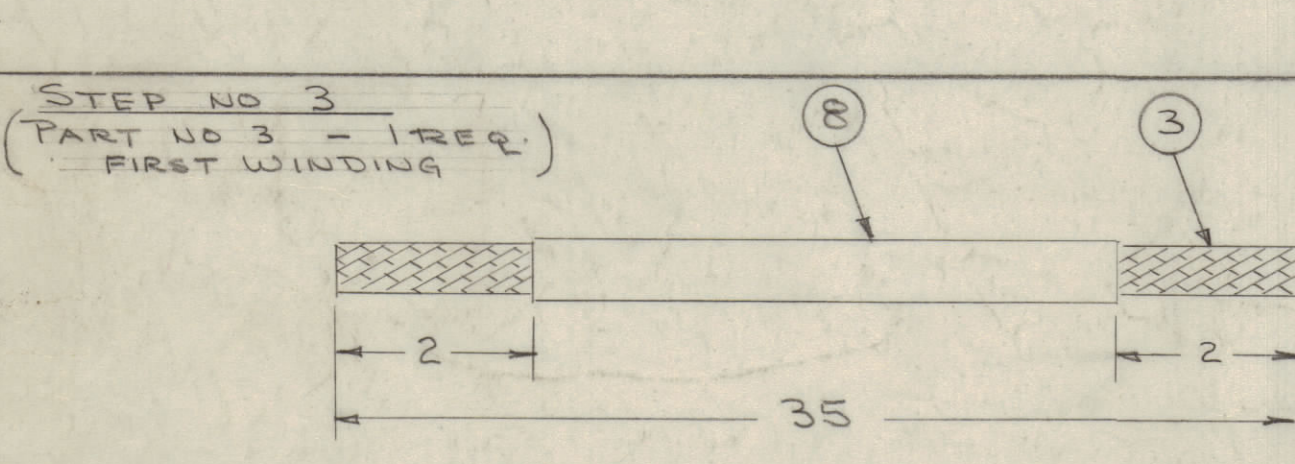
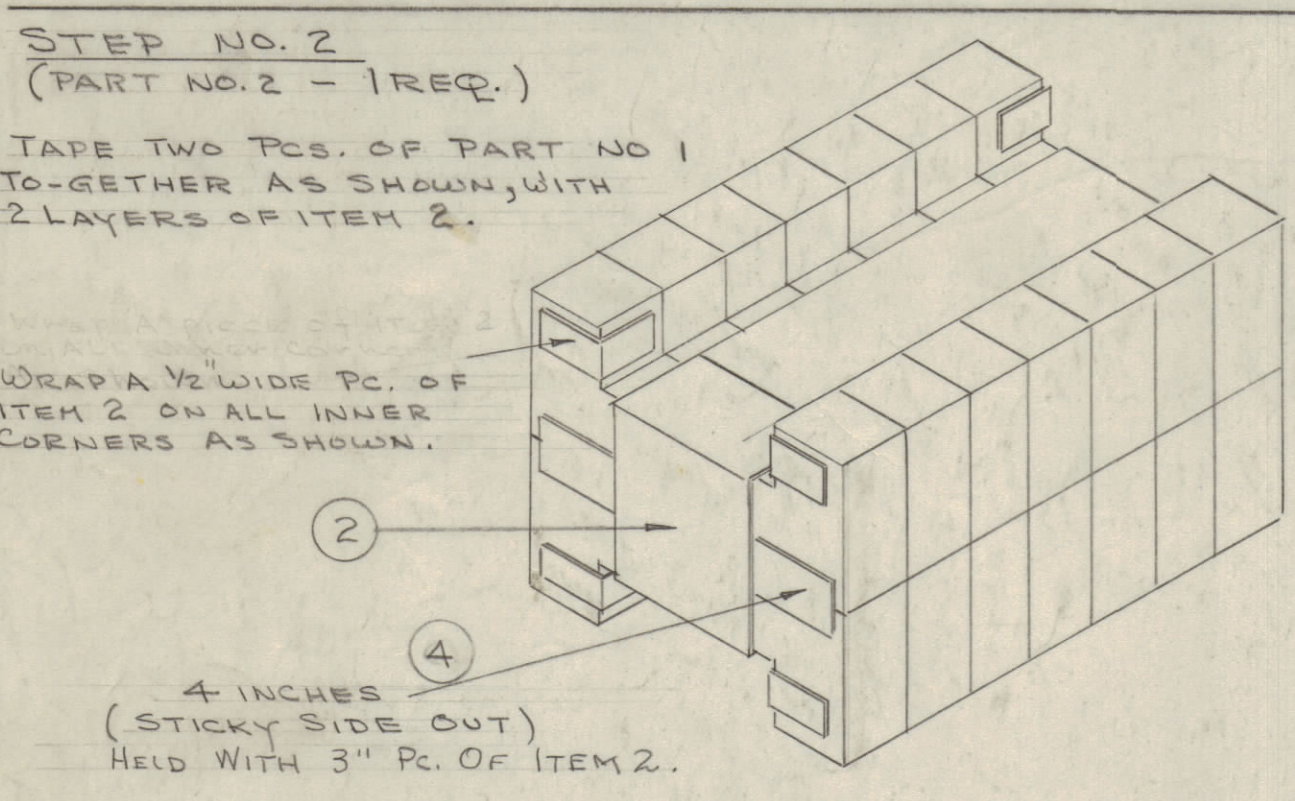
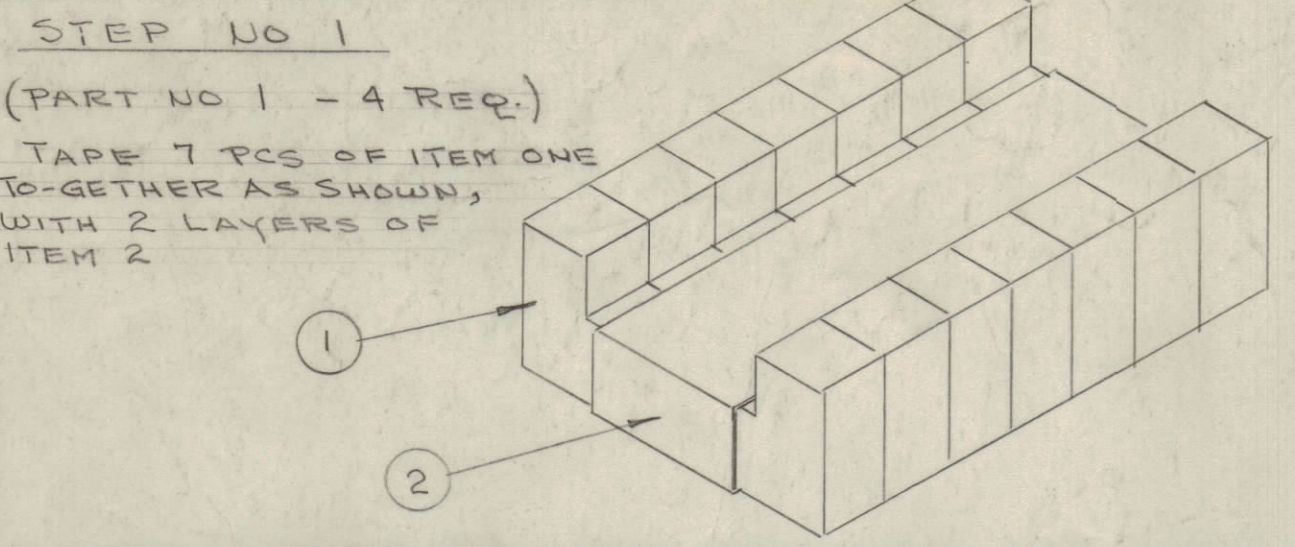
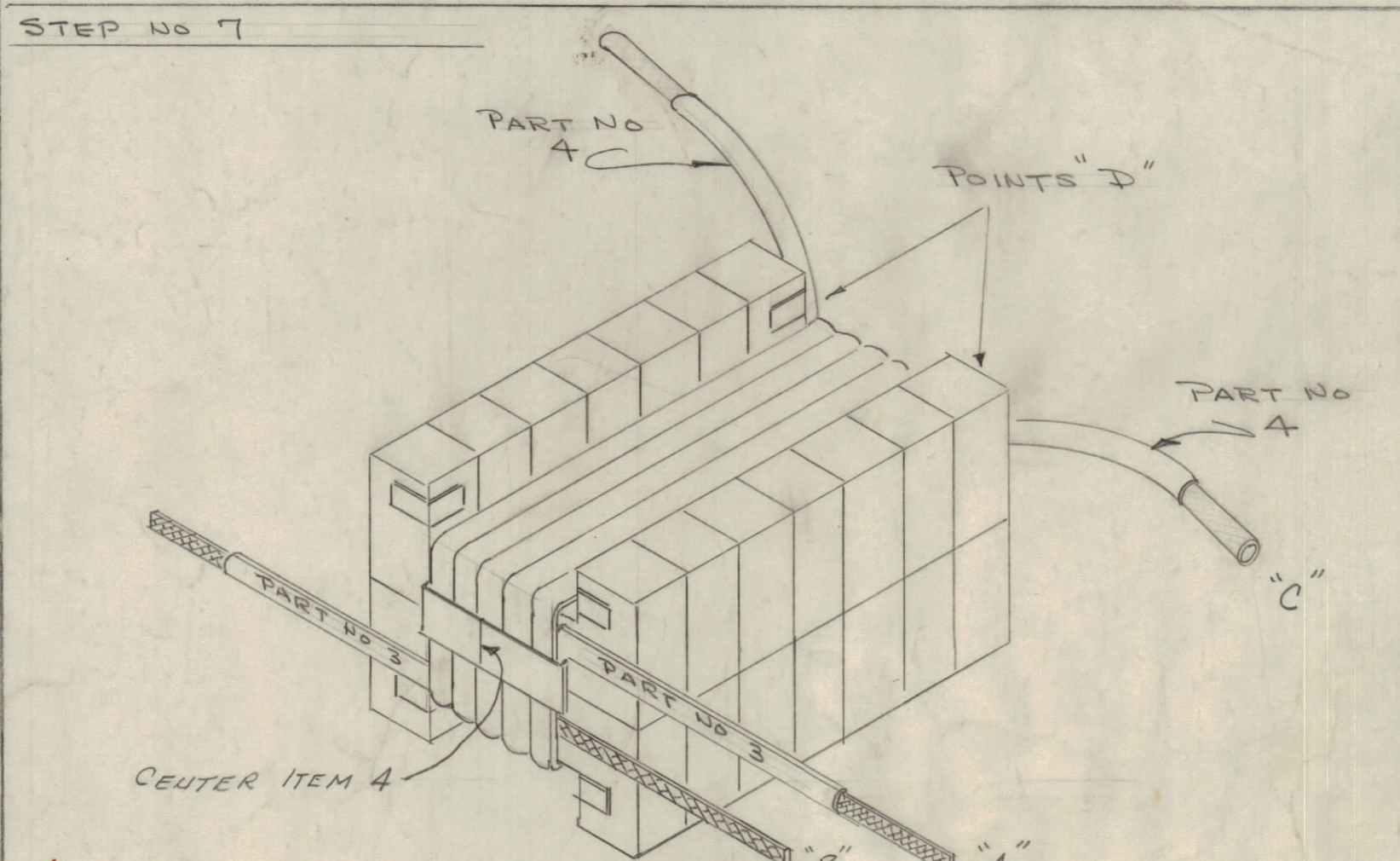
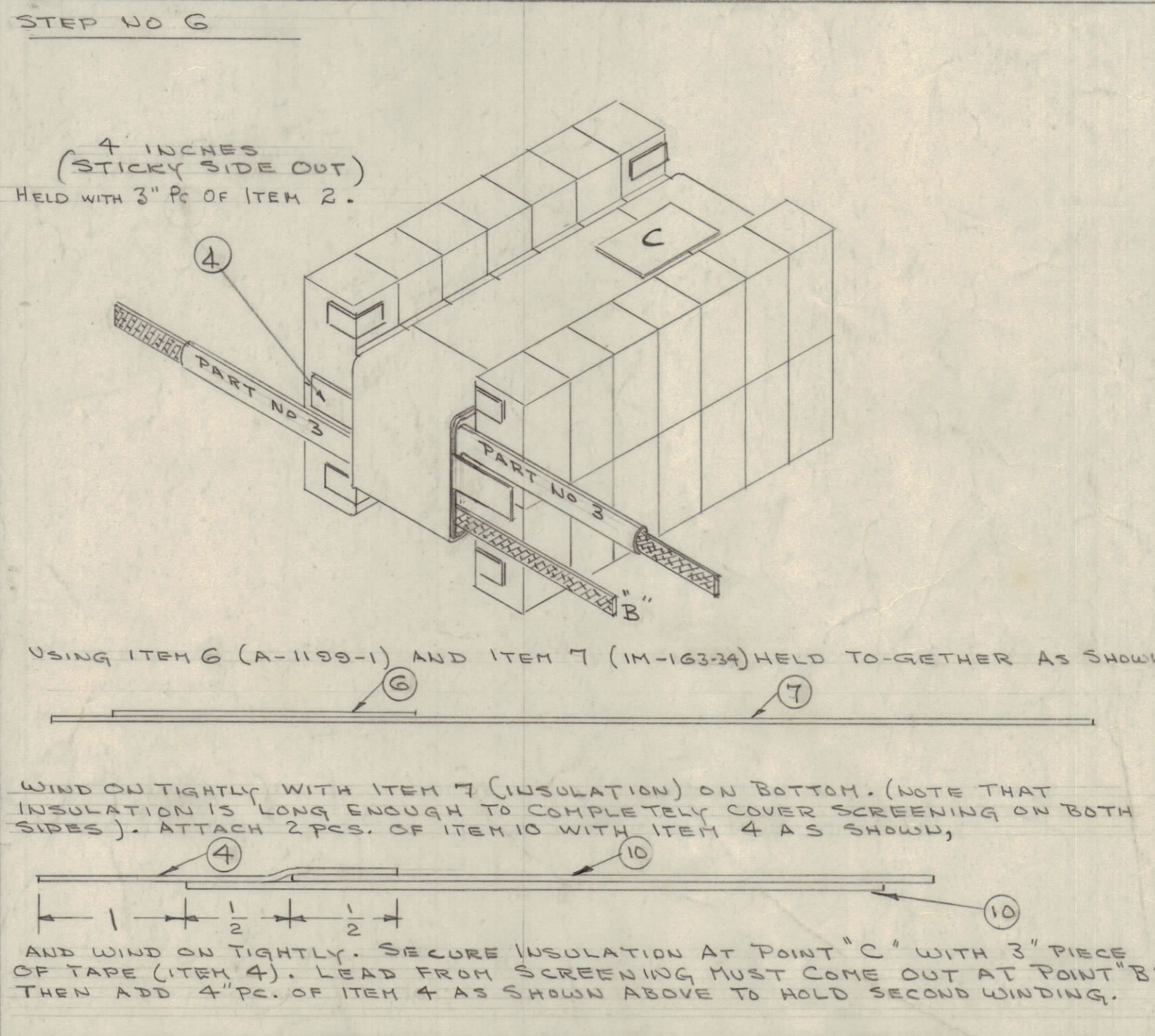
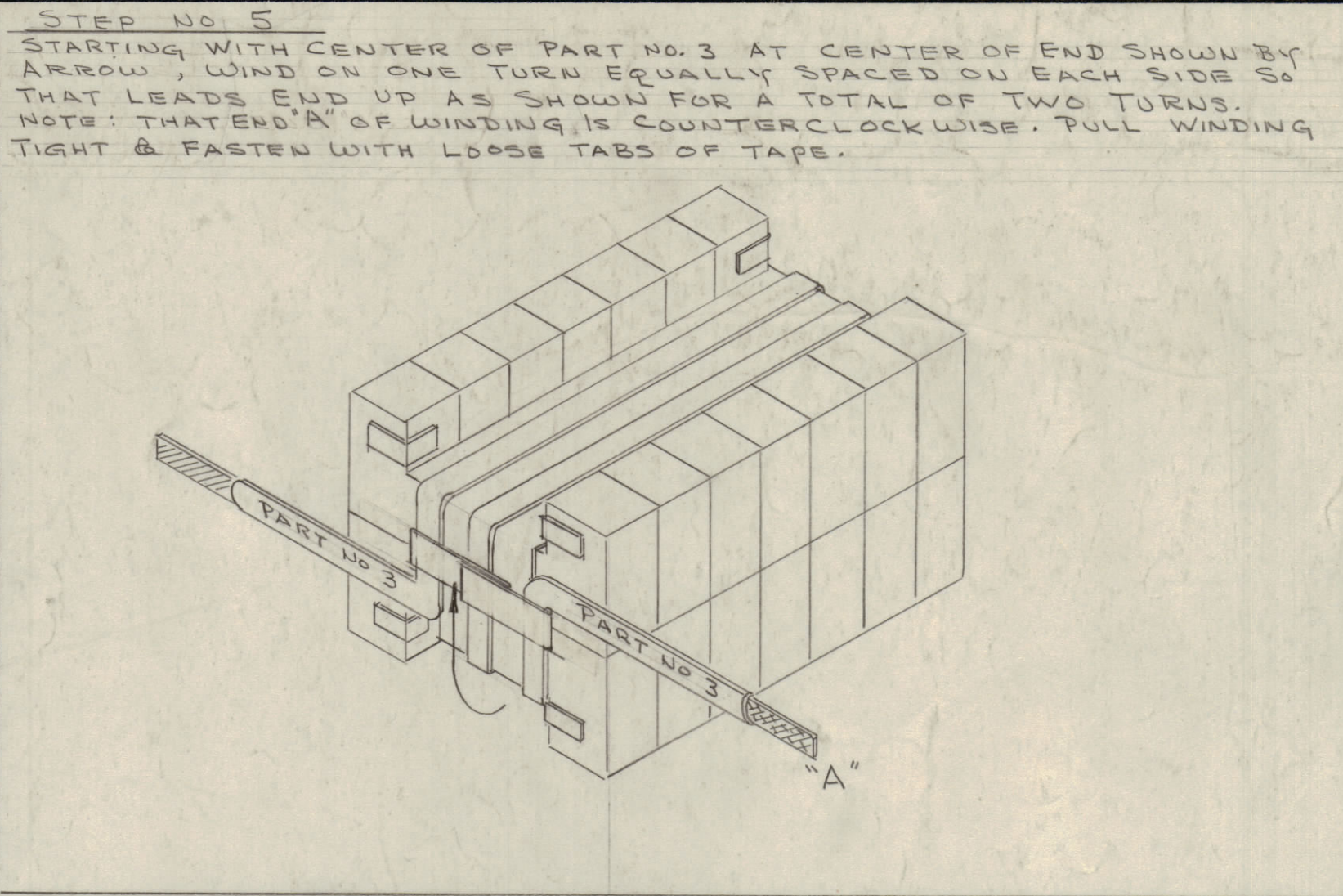


IF IT IS FOUND DESIRABLE TO CHANGE ANY TOLERANCE OR OTHER DETAIL SPECIFIED ON THIS DRAWING NOTIFY THE PURCHASER PROMPTLY.  
 MAXIMUM ALLOWABLE TOLERANCES HAVE BEEN DETERMINED AND DEVIATIONS WILL BE CAUSE FOR REJECTION. REMOVE ALL BURRS AND SHARP EDGES.

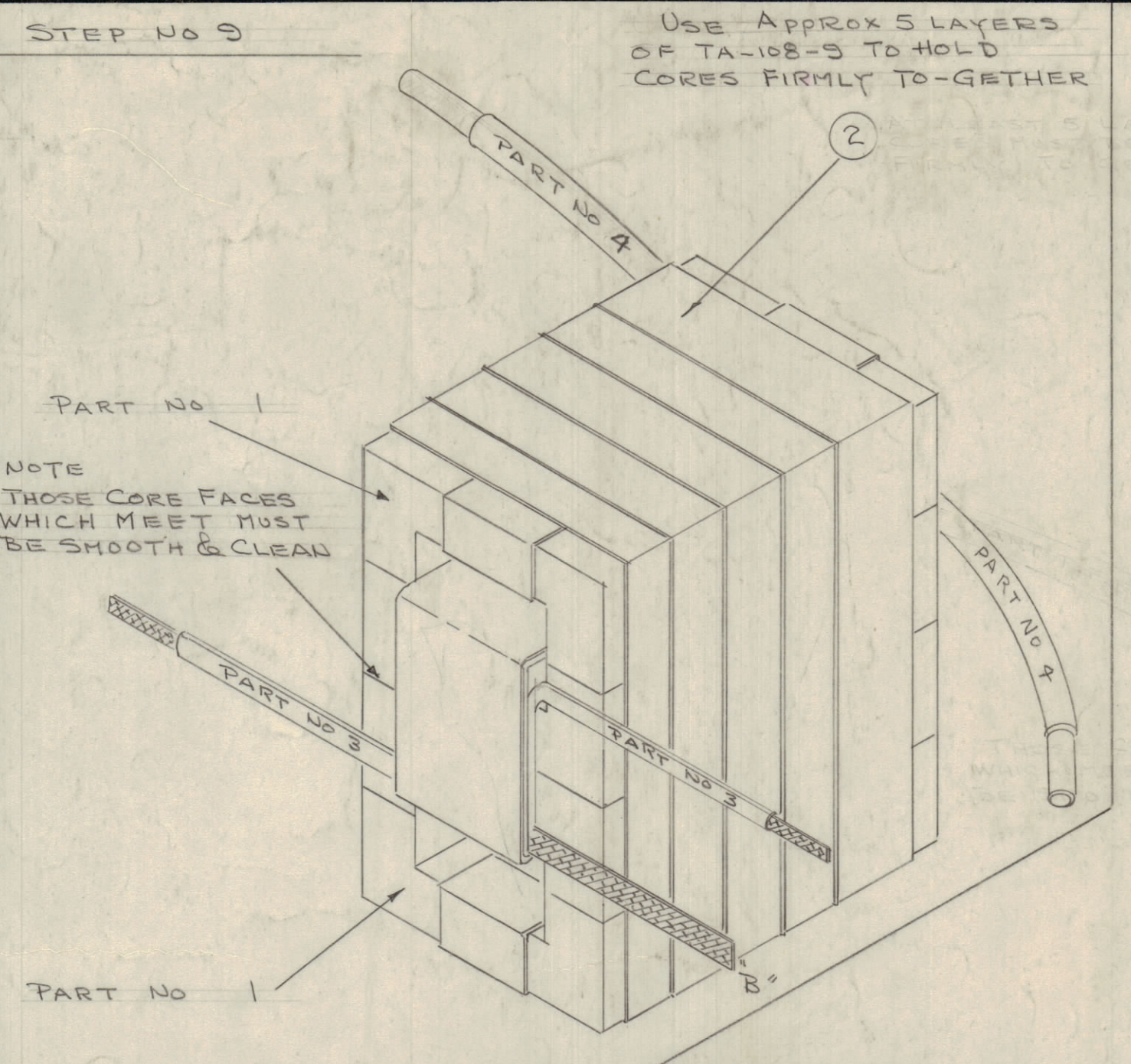


E	HARDWARE WAS CADMIUM TR153, NP358 DELETED	4/18/67	18084	HLA			
D	3 ITEM 20 WAS NS-119						
D	2 ITEM 33 & 34 ADDED	6-27-64	5121	GDL	RU	CM	
D	1 ITEM 21 WAS NS-120						
C	1 CHART ADDED TO ITEM 32	2/24/60		AL			
B	2 PERFORMAL CHG'D TO ACCOMMODATE INST. CHG. INSTRUCTION ITEM 7 CHG'D	9/1/58	AA6	LVC	RWB	OMP	
A	1 DELETED ITEM 28 (163-12) & NOTE 3, STEP 11.	9/1/58	1	KB		OMP	
ISSUE	ITEM	CHANGED FROM	DATE	CN. NO.	DRAFTS	CHECKER	ENG. APP.
TOLERANCES							
ALL	DEC. DIM. ±	DRILL, PUNCH, COMMERCIAL STOCK					
OTHERS	FRAC. DIM. ±	SIZES AND MANUFACTURERS					
	ANGULAR DIM. ±	TOLERANCES ARE NOT INCLUDED.					



STARTING WITH CENTER OF PART #4 AT CENTER OF END SHOWN BY ARROW IN STEP #5, WIND ON 2 1/2 TURNS ON EACH SIDE FOR A TOTAL OF 5 TURNS. CENTER POINT OF PART #4 IS USED SO THAT EACH END OF WIND NO. 2 IS EQUAL IN LENGTH. LEADS SHOULD END UP AT POINTS 'D' AS SHOWN. END 'C' OF PART #4 SHOULD BE CLOCKWISE (OPPOSITE DIRECTION OF PART #3, POINT 'A') WHEN WINDING IS COMPLETED.

**STEP 8**  
 WIND ON 3 LAYERS OF ITEM 4 (TAPE)

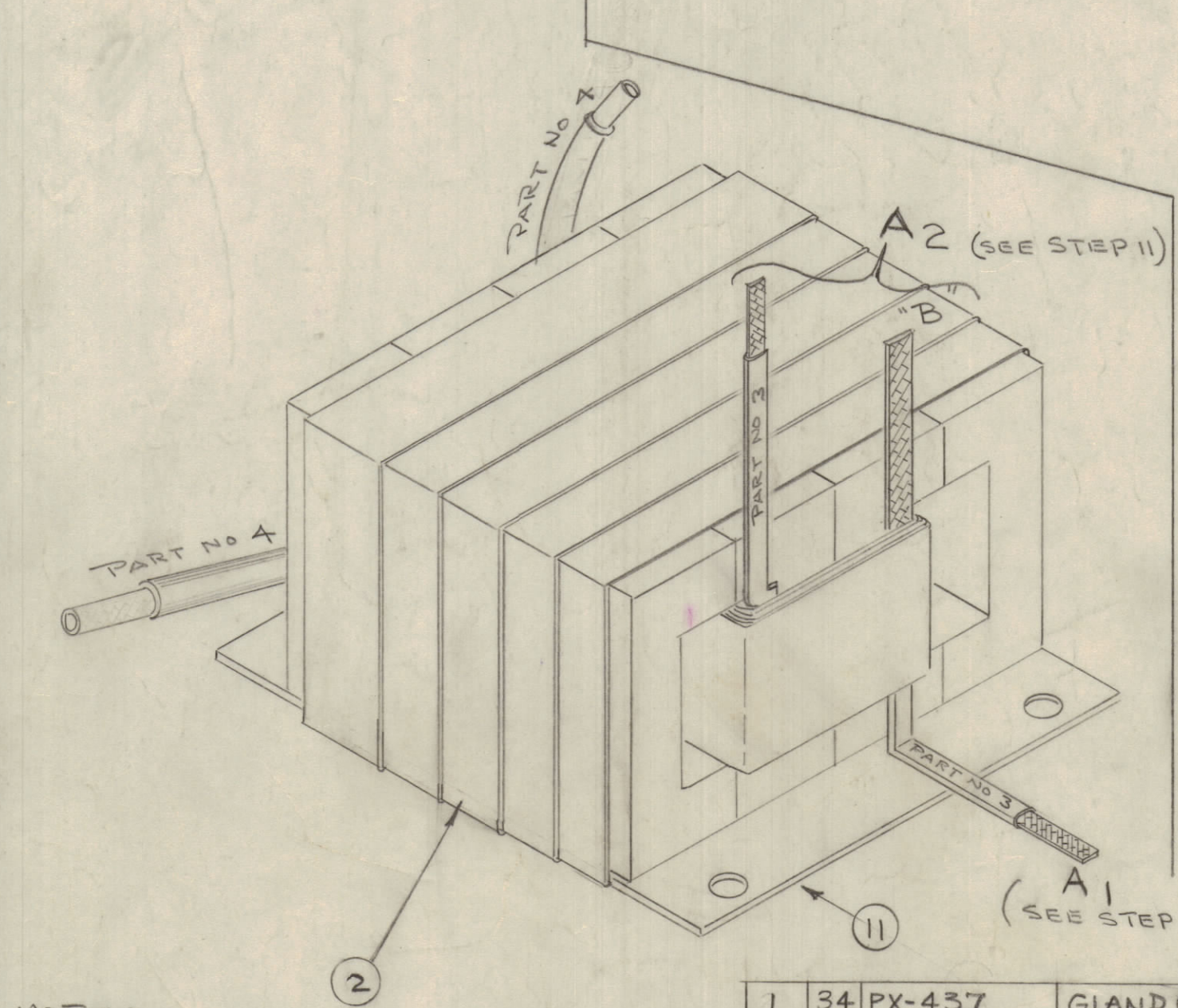


**STEP 11**

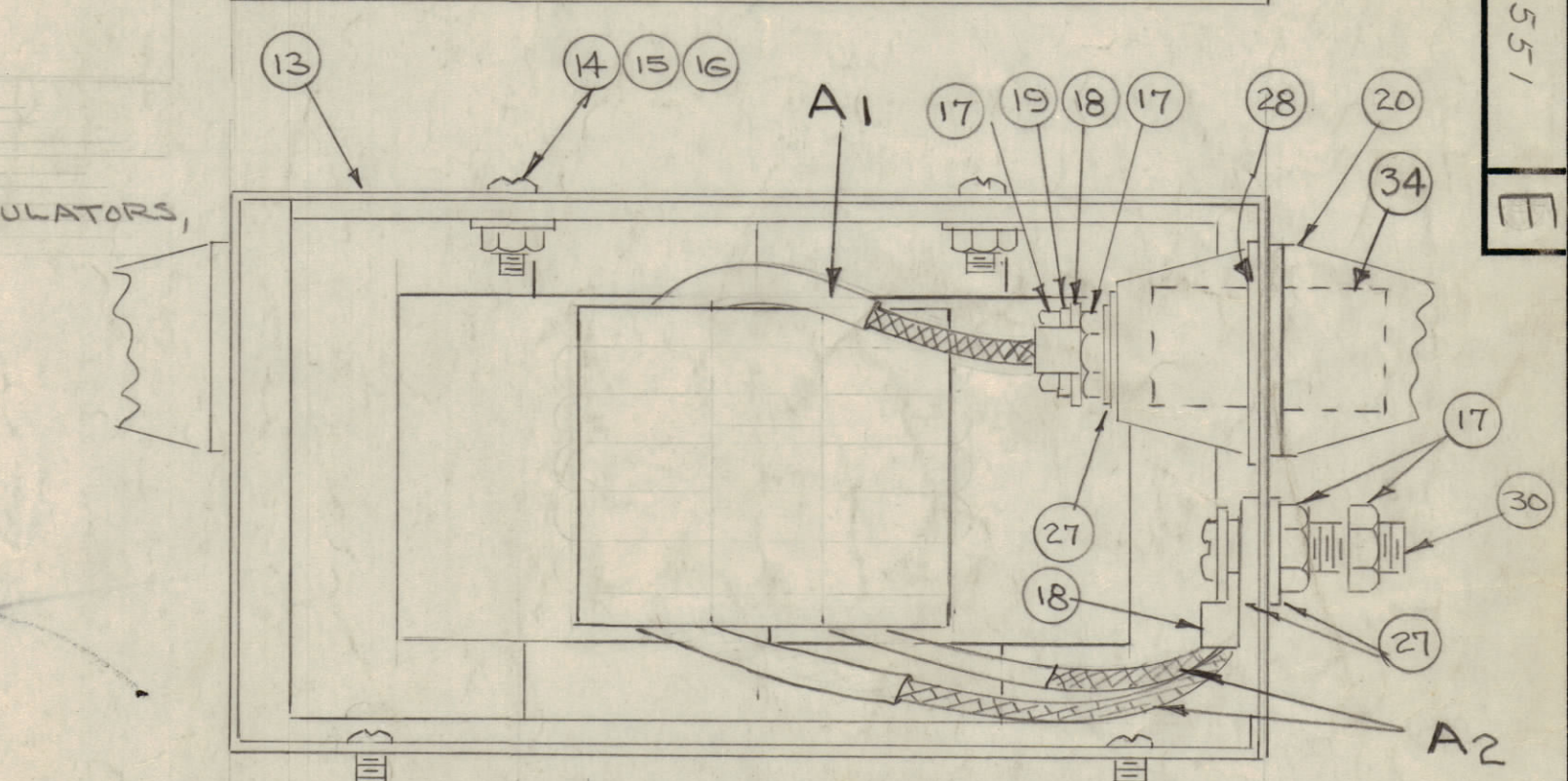
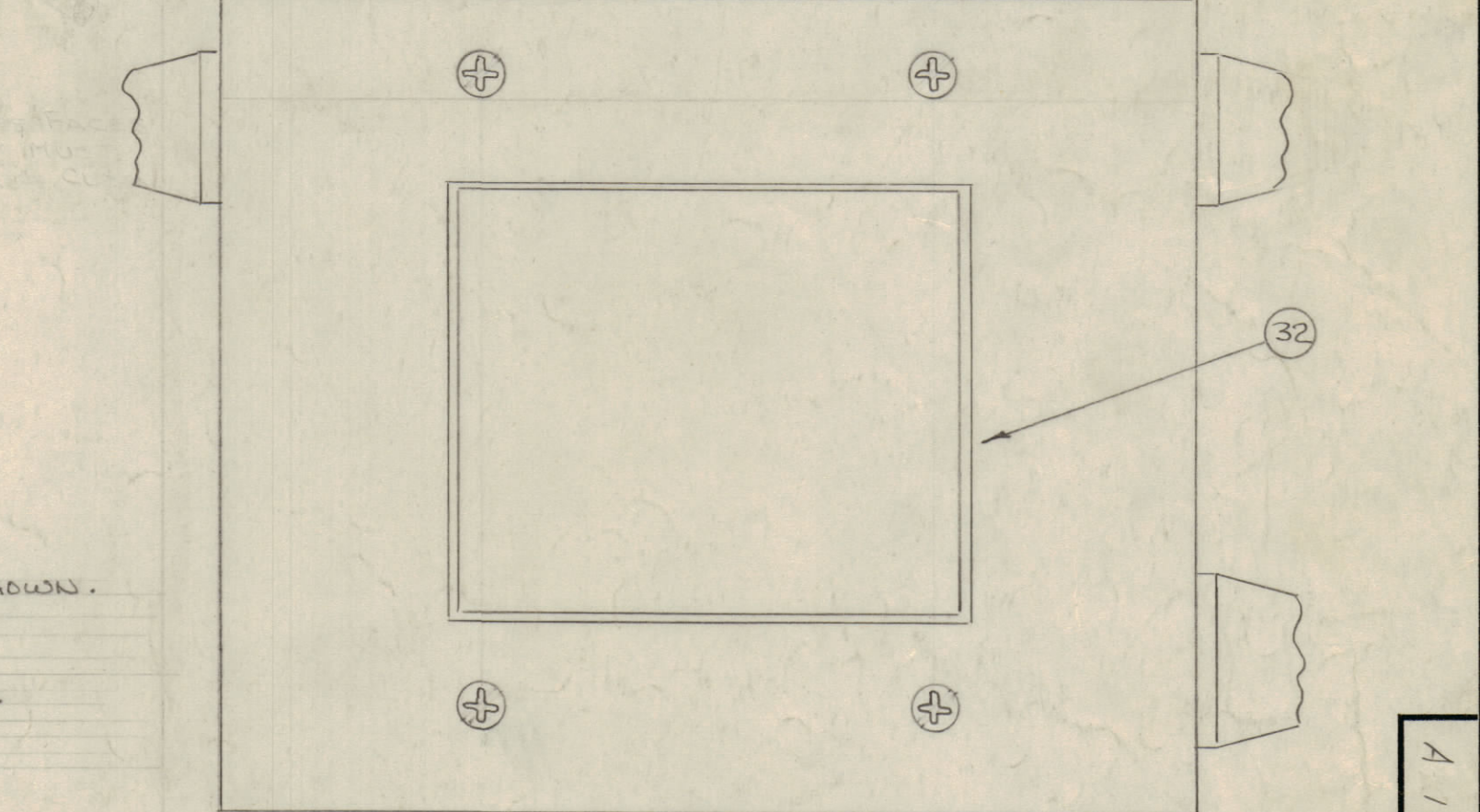
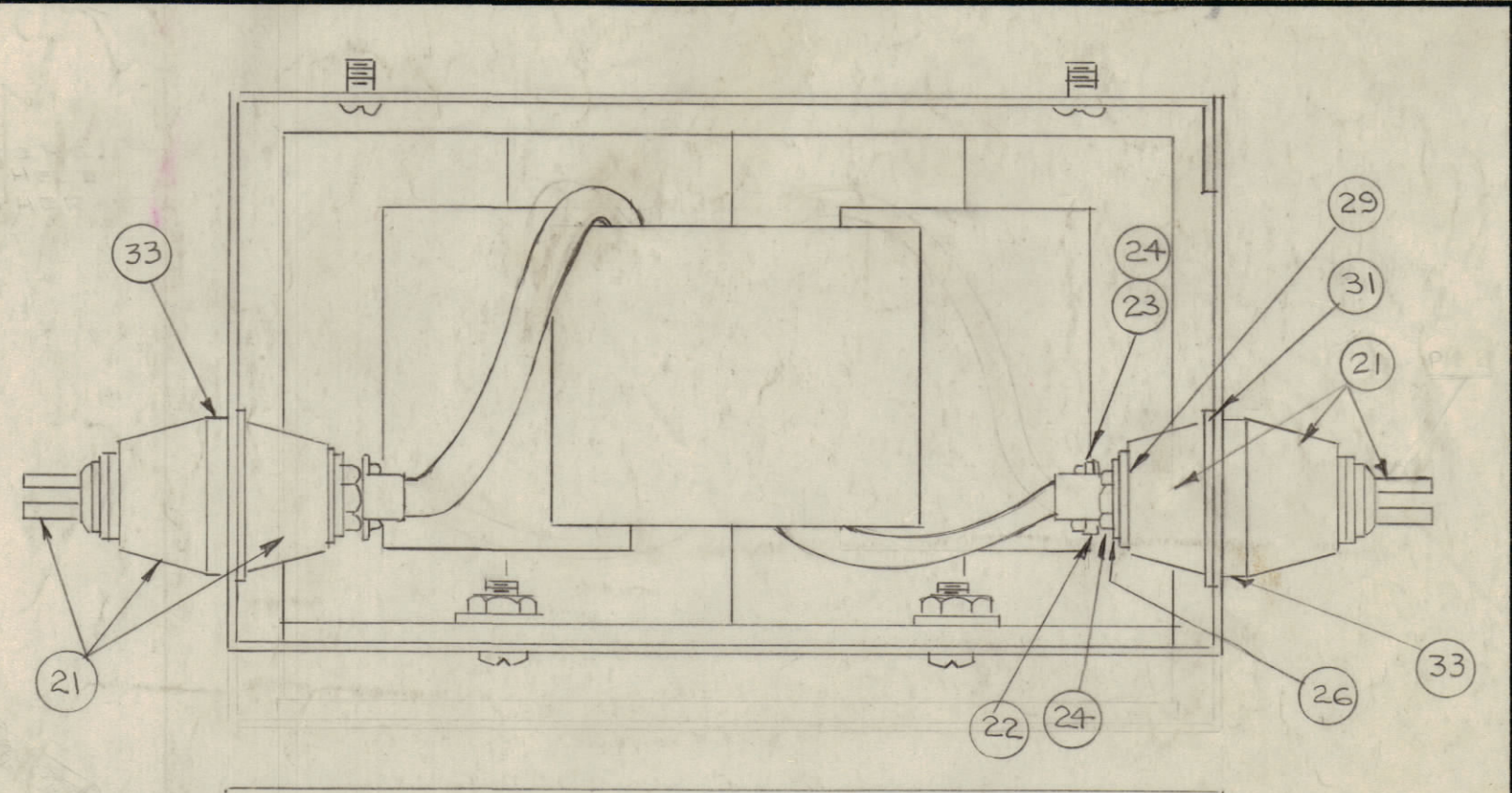
1. MAKE SOLDER CONNECTIONS AS SHOWN.
2. SOLDER ONE END IN PLACE.
3. DELETED
4. SOLDER OTHER ENDS IN PLACE.
5. SMOOTH ALL SEAMS.
6. FINISH (SEE NOTE BELOW).

**STEP 10**

FINISH:  
 DEGREASE  
 S-114 ZINC CHROMATE PRIMER.  
 S-115 SMOOTH GRAY ENAMEL.  
 DO NOT PAINT HTG. STUDS, INSULATORS, OR GROUND STRAPS.



REQ. ITEM	PART NO.	DESCRIPTION
1	34 PX-437	GLAND (TEFLON)
2	33 PX-287	GLAND (TEFLON)
1	32 NP229	NAMEPLATE (FOIL CAL)
2	31 GA-118	GASKET, CORK
1	30 SCBP2520BN12	SCREW, MACHINE
3	29 GA-114	GASKET, NEOPRENE
1	28 GA-117	GASKET, CORK
3	27 FW25 M55	WASHER, FLAT
2	26 FW10 M55	WASHER, FLAT
2	25	
2	24 NTH1024BN12	NUT, HEX.
2	23 LW1018MRN	LOCKWASHER, EXT.
2	22 TE-141-3	LUG



REQ. ITEM	PART NO.	DESCRIPTION	SYMBOL
2	21 NS-118-5	INSULATOR, MODIFIED	
1	20 NS-119-1	INSULATOR, FEED THRU	
2	19 LW25 MRN	LOCKWASHER, EXT.	
2	18 TE-141-4	LUG	
4	17 NTH2520BN14	NUT, HEX.	
4	16 NTH0832BN12	NUT, HEX.	
4	15 LW08MRN	LOCKWASHER, EXT.	
4	14 SCBP0832BN8	SCREW, MACHINE	
1	13 Bx-1G4	CASE & COVERS	
1	12 DELETED		
1	11 MS-177	PLATE SUPPORT XFORMER	
2	10 IM-163-20	INSULATION, FIBERGLAS	
82	9 TU-100-2-N	TUBING, COPPER	
168	8 PX-270-G-7	INSULATION, SLEEVING, TEFLON (NATURAL)	
1	7 IM-163-34	INSULATION, FIBERGLAS	
1	6 A-1199-1	SHIELD, ASSEMBLY	
X	5 GL-112	VARNISH	
X	4 TA-108-7	TAPE (1" WIDE)	
117	3 WL-103-4	SHIELD, FLEXIBLE	
X	2 TA-108-9	TAPE (1/2" WIDE)	
28	1 CI-101-3-Q	CORE	

NOT TO BE RELEASED W/O AUTHORIZATION

AUTH. BY: \_\_\_\_\_  
 DATE: \_\_\_\_\_

REQ. ITEM	PART NO.	DESCRIPTION	SYMBOL
1	34 PX-437	GLAND (TEFLON)	
2	33 PX-287	GLAND (TEFLON)	
1	32 NP229	NAMEPLATE (FOIL CAL)	
2	31 GA-118	GASKET, CORK	
1	30 SCBP2520BN12	SCREW, MACHINE	
3	29 GA-114	GASKET, NEOPRENE	
1	28 GA-117	GASKET, CORK	
3	27 FW25 M55	WASHER, FLAT	
2	26 FW10 M55	WASHER, FLAT	
2	25		
2	24 NTH1024BN12	NUT, HEX.	
2	23 LW1018MRN	LOCKWASHER, EXT.	
2	22 TE-141-3	LUG	

THE TECHNICAL MATERIEL CORP.  
 MAMARONECK, NEW YORK

TRANSFORMER SUB-ASSY  
 TR-149

TYPE & TEMPER: 110/114 RWB  
 DRAWN: RWB  
 ELEC. DES. APP. MECH. DES. APP.

HEAT TREAT. SPEC. CHECKED: RWB  
 FINAL APPROVAL: OMP

FINISH & SPEC. NO. A 1551 E