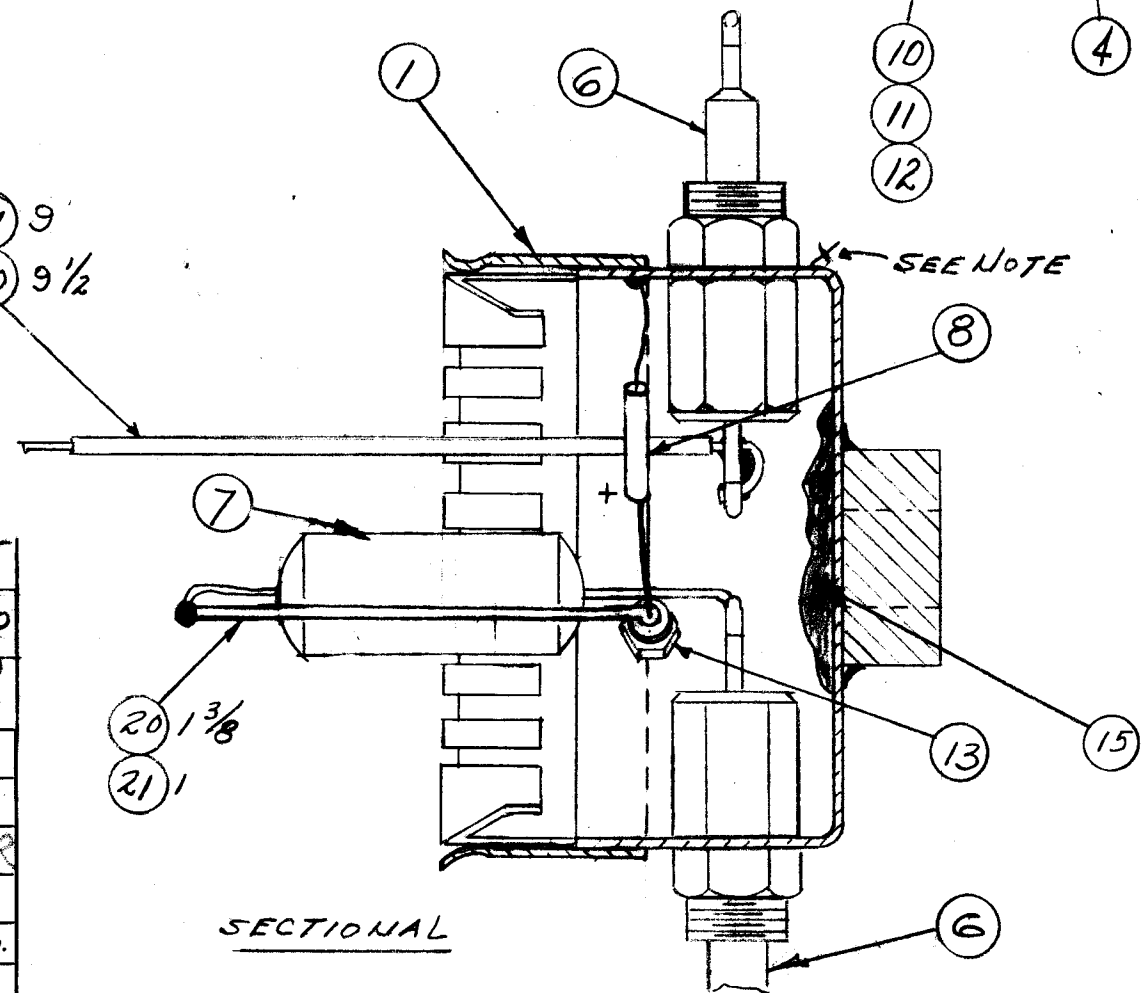
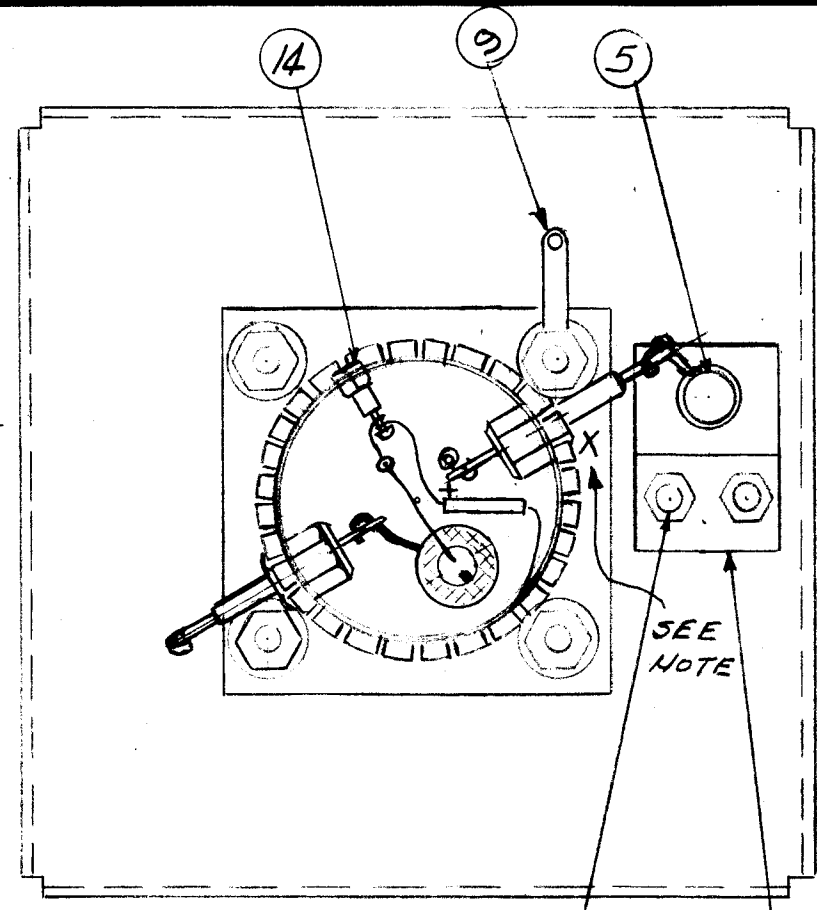
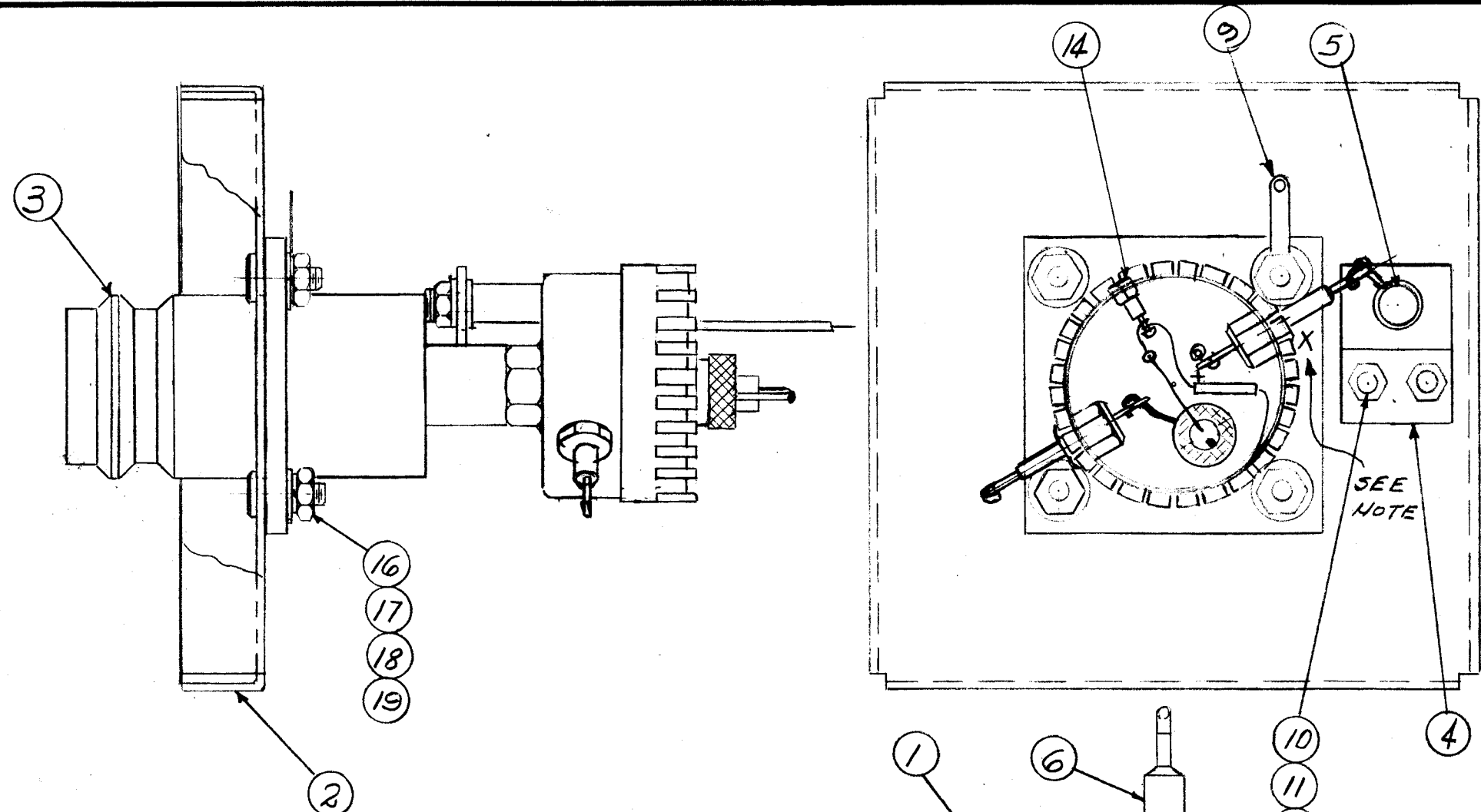


A 1548 G



X-NOTE-  
 THE FEED THRU CAPACITOR NEXT TO THE PAINTED POINT IS CONNECTED TO VARIABLE CAPACITOR - CV-102  
 COLOR CODE WITH RED PAINT ON ASSEMBLY

REQ. ITEM	PART NO.	DESCRIPTION	SYMBOL
X 22	BS 100	SOLDER, SOFT	
10 21	PX 370-16-7	INSULATION, SLEEVING, TEFLON	
11 20	WL 100-7	WIRE, BUSS #22	
4 19	NTH0832 BN11	NUT, HEX	
4 18	FW08LBN	WASHER, FLAT	
4 17	LWS08MBN	LOCK WASHER, SPRING TYPE	
4 16	SCBP0832 BN8	SCREW, MACHINE	
X 15	BS 101-1	SOLDER, SILVER	
1 14	SCBP0440 BN3	SCREW, MACHINE	
1 13	TE 102-2	TERMINAL TURRET	
2 12	NTH0440 B 8	NUT, HEX.	
2 11	LWE04MRN	LOCK WASHER, EXT.	
2 10	SCBP0440 BN5	SCREW, MACHINE	
2 9	TE-113-169	LUG, TERMINAL	
1 8	IN 252A	DIODE, XTAL	
1 7	CL 140-1	CHOKE, R.F.	
2 6	CK70A102M	CAPACITOR, FIXED, FEED THRU	
1 5	CV 102	CAPACITOR, VAR. GLASS	
1 4	MS 1273	BRACKET	
1 3	JJ 163	CONNECTOR, FEED THRU	
1 2	MS 1275	PLATE, RIGHT SIDE	
1 1	A-1806	CAN, ASSEMBLY	

ISSUE	ITEM	CHANGED FROM	DATE	CH. NO.	DRAFTS	CHECKER	ENG. APP.
G		IT. 15 WAS BS101 - IT. 8 WAS IN252.	1-25-67	17729	RME		
F	3	ON ITEM (5), POLARITY CLARIFIED	7-5-63	8391			
F	2	ON NOTE CV-102 WAS CV-101-1					
F	1	ITEMS (20) & (21) LENGTH WAS 10/16					
E	2	HARDWARE CLARIFIED	2-25-63	8316			
E	1	ITEM (3) WAS JJ-137					
D	1	Item 1 Was A-1624	6-9-61	4957	M.H.F.		
C	1	ITEM 1 WAS BX-163	1/26/59	691	J.C.B.		
B	1	ITEM 7 WAS CL-101-3	11/3/58	321			
A	1	ITEM 9 PT. NO. WAS TE-113-180	6/29/58	394			

TOLERANCES		SCALE:	
DEC. DIM. ±		MAXIMUM ALLOWABLE TOLERANCES HAVE BEEN DETERMINED AND ANY DEVIATIONS WILL BE CAUSE FOR REJECTION.	
FRAC. DIM. ±		REMOVE ALL BURRS AND SHARP EDGES	
ANGULAR DIM. ±			

1	SWR-3000 CU	PROJECT NO.	ASSY. NO.	DATE
				6-3-58

THE TECHNICAL MATERIEL CORP. MAMARONECK, NEW YORK			
<b>LEFT SIDE PLATE ASSY TRANSMITTER END</b>			
TYPE & TEMPER	HEAT TREAT. SPEC.	DRAWN	CHECKED
FINISH & SPEC. NO.	ELEC. DES. APP.	MECH. DES. APP.	FINAL APPROVAL
			A1548 G