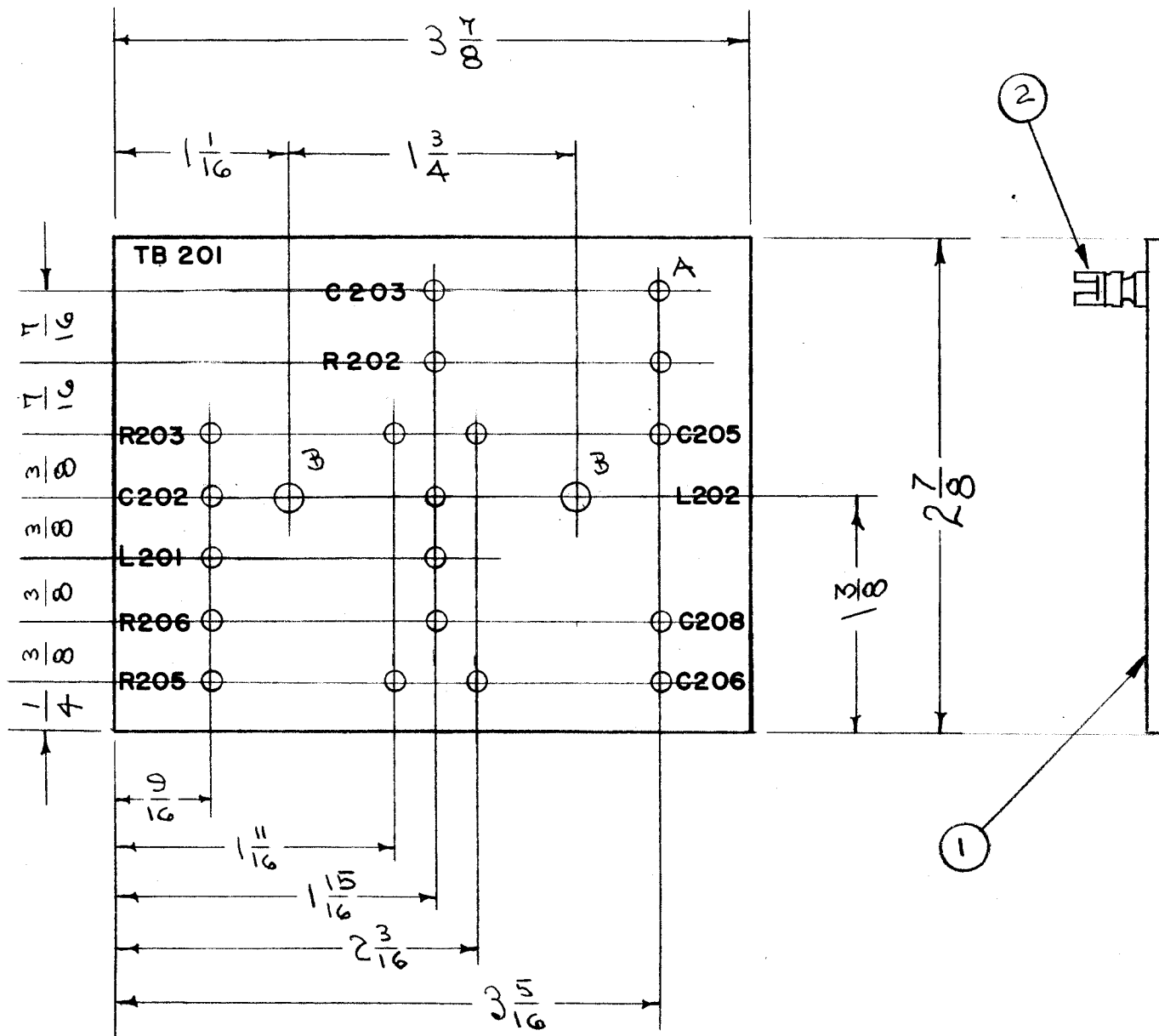


IF IT IS FOUND DESIRABLE TO CHANGE ANY TOLERANCE OR OTHER DETAIL SPECIFIED ON THIS DRAWING NOTIFY THE PURCHASER PROMPTLY.

MAXIMUM ALLOWABLE TOLERANCES HAVE BEEN DETERMINED AND DEVIATIONS WILL BE CAUSE FOR REJECTION. REMOVE ALL BURRS AND SHARP EDGES

A-1536 A

A - 2.9 MILLIMETER 19 REQ.
B - NO. 12 (.189) " - 2 "



NOTICE TO PERSONS RECEIVING THIS DRAWING

THE TECHNICAL MATERIEL CORPORATION claims proprietary right in the material disclosed hereon. This drawing is issued in confidence for engineering information only and may not be reproduced or used to manufacture anything shown hereon without permission from THE TECHNICAL MATERIEL CORPORATION to the user. This drawing is loaned for mutual assistance and is subject to recall at any time.

Property of:
THE TECHNICAL MATERIEL CORPORATION
MAMARONECK, NEW YORK

NOTE
LETTERING 1/8 HIGH, BLACK, GOTHIC

MARKING PROCESS: AS PER TMC SPECIFICATION S-727

2	3	TE-108-3	STAND-OFF, RIVET TYPE	
19	2	TE-109-3	TERMINAL, SPLIT LUG	
1	1	TX-233	TERMINAL BOARD (NO DWG)	
REQ.	ITEM	PART NO.	DESCRIPTION	SYMBOL
1/8 THICK			THE TECHNICAL MATERIEL CORP.	
STOCK SIZE			MAMARONECK. NEW YORK	
PHENOLIC		—	TERMINAL BOARD	
MATERIAL		WEIGHT PER PC.	R. F.	
XXXP LAMINATE			CDD. 7-22-54	
TYPE & TEMPER			A. J. J.	
			DRAWN	
			ELEC. DES. APP.	
			MECH. DES. APP.	
HEAT TREAT. SPEC.			A. J. J.	
NATURAL			CHECKED	
FINISH & SPEC. NO.			FINAL APPROVAL	
			A-1536 A	

A	1	ITEM 3 ADDED	8/24/61	5493	J.E.	RU	AM
ISSUE	ITEM	CHANGED FROM	DATE	CN. NO.	DRAFTS	CHECKER	ENG. APP.
TOLERANCES		SCALE:					
DEC. DIM. ±		DRILL, PUNCH, COMMERCIAL STOCK					
FRAC. DIM. ± 1/64		SIZES AND MANUFACTURERS					
ANGULAR DIM. ±		TOLERANCES ARE NOT INCLUDED.					
ALL OTHERS			1	PMO	285	A-B16	7-22-54
			REQ. PER UNIT	MODEL	PROJECT NO.	ASS'Y. NO.	DATE
			USED ON				