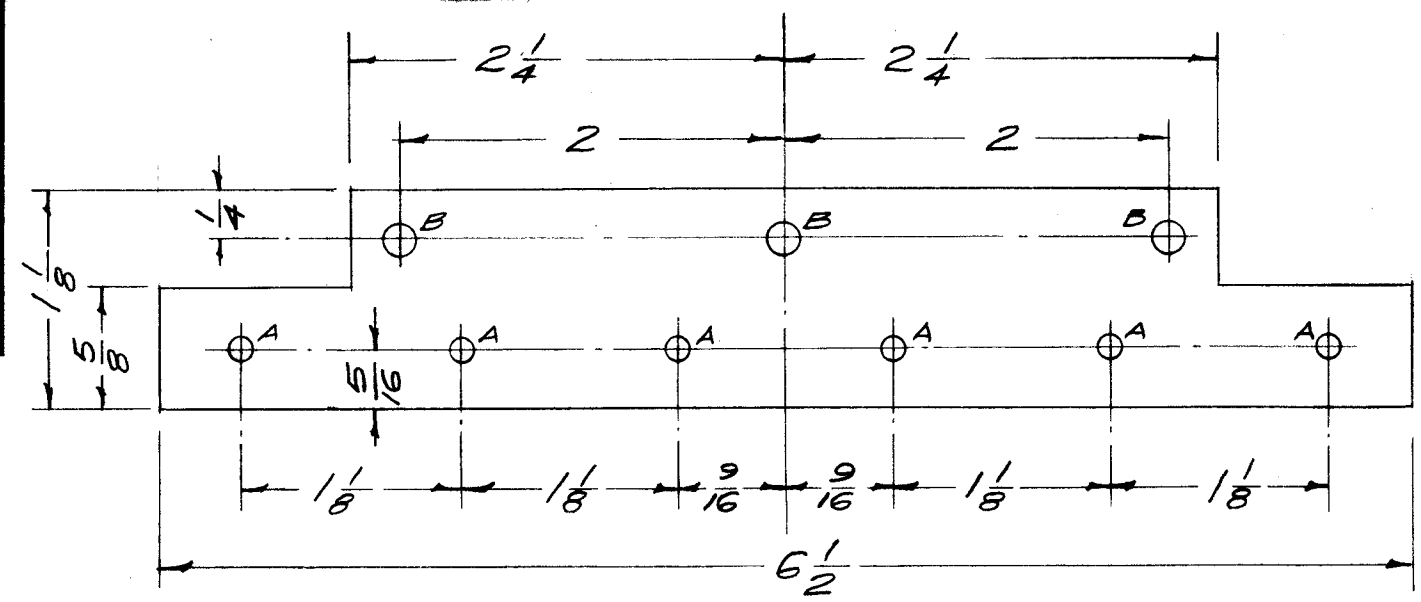
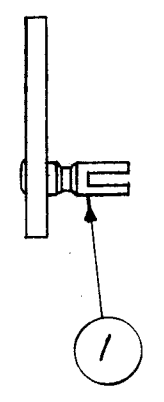


A-1533 D

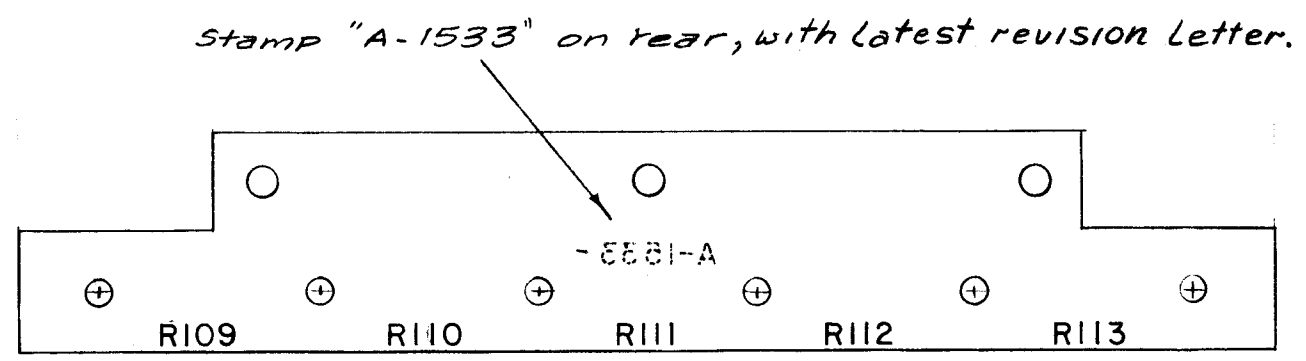


A - No. 32 Dr. (.116 D.) 6 Req.
 B - 1/64 (.171) D. 3 Req.

STAGE 1 (MACHINING)

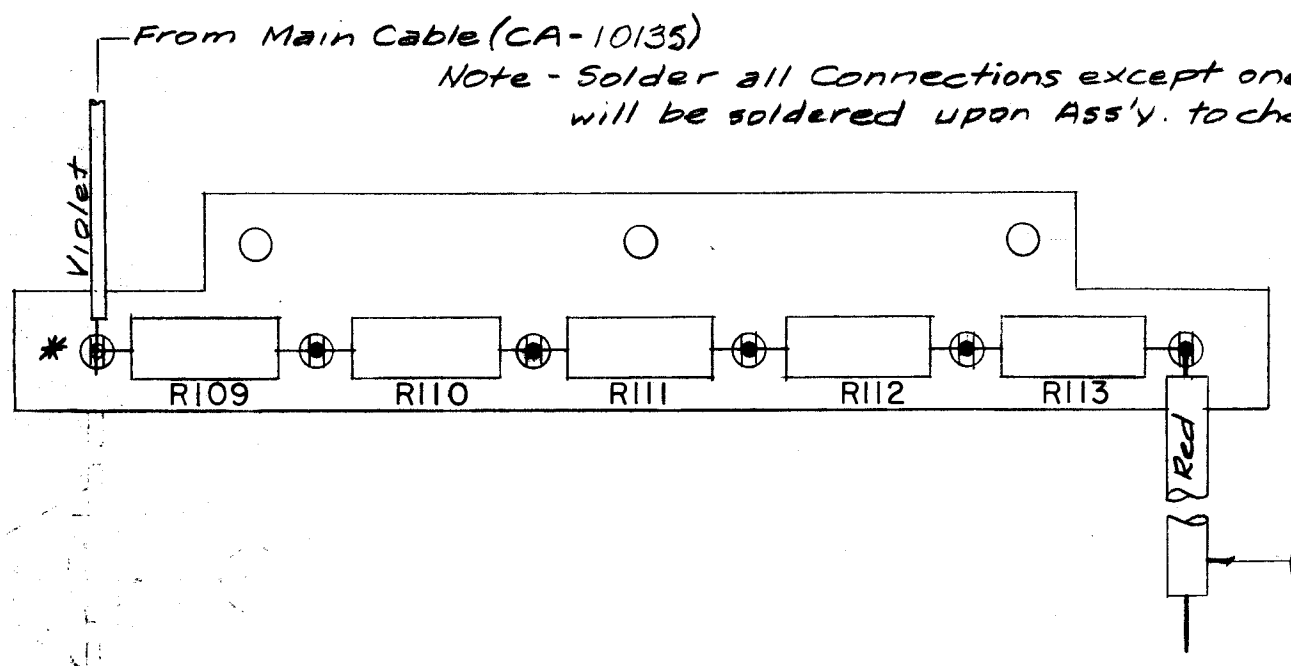


STAGE 3
(MECHANICAL ASSEMBLY)



Lettering to be 1/8 high black Gothic.
 MARKING PROCESS: AS PER TMC SPECIFICATION S-727

STAGE 2 (STAMPING)



STAGE 4 (ELECTRICAL ASS'Y.)

R109, 110, 111, 112, 113

NOTICE TO PERSONS RECEIVING THIS DRAWING

THE TECHNICAL MATERIEL CORPORATION claims proprietary right in the material disclosed hereon. This drawing is issued in confidence for engineering information only and may not be reproduced or used to manufacture anything shown hereon without permission from THE TECHNICAL MATERIEL CORPORATION to the user. This drawing is loaned for mutual assistance and is subject to recall at any time.

Property of:
 THE TECHNICAL MATERIEL CORPORATION
 MAMARONECK, NEW YORK

REQ. ITEM	PART NO.	DESCRIPTION	SYMBOL
X 6	BS-100	Solder, Soft	
5	DELETED	(WAS PX-104-1-.038)	
1 4	CA377-2	LEAD, ELECTRICAL H.V.	Red
3	DELETED	(WAS RCA2GF224K)	
5 2	RC42GF206J	Resistor, Fixed, Comp.	
6 1	TE-109-3	Lug, Terminal	

1/8 THK.		THE TECHNICAL MATERIEL CORP. MAMARONECK, NEW YORK	
STOCK SIZE		TERMINAL BOARD, METERING, (ALL STAGES) TB101	
LINEN BASE PHENOLIC		MATERIAL	
LE		6/5/58	MOATS
TYPE & TEMPER	HEAT TREAT. SPEC.	DRAWN	CHECKED
S113			
FINISH & SPEC. NO.	ELEC. DES. APP.	MECH. DES. APP.	
			A-1533 D

ISSUE	ITEM	CHANGED FROM	DATE	CH. NO.	DRAFTS	CHECKER	ENG. APP.
D	1	3 1/2 DELE FR. STAGE 4 AT ④	9.17.64	12399	ASB		MMK
C	2	FINISH WAS "NATURAL" IT 4 WAS WI126-1	8.12.64	12107	ASB	MP.	OD
B	1	DWG UPDATED & CLARIFIED	11/7/63	10354	BR	MT	WJR
A	2	ITEMS 3 & 5 DELE	5/9/68	1	16	RPM	ATT
A	1	CABLE CONN. WAS WH/BLUE					

TOLERANCES		SCALE: FULL	
DEC. DIM. ±	MAXIMUM ALLOWABLE TOLERANCES HAVE BEEN DETERMINED AND ANY DEVIATIONS WILL BE CAUSE FOR REJECTION.	1	PSP-350A
FRAC. DIM. ± 1/64	REMOVE ALL BURRS AND SHARP EDGES	1	PSP-350 PAL-350
ANGULAR DIM. ±		REQ. PER UNIT	MODEL PROJECT NO. ASS'Y. NO. DATE
			USED ON