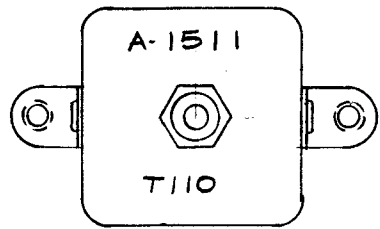
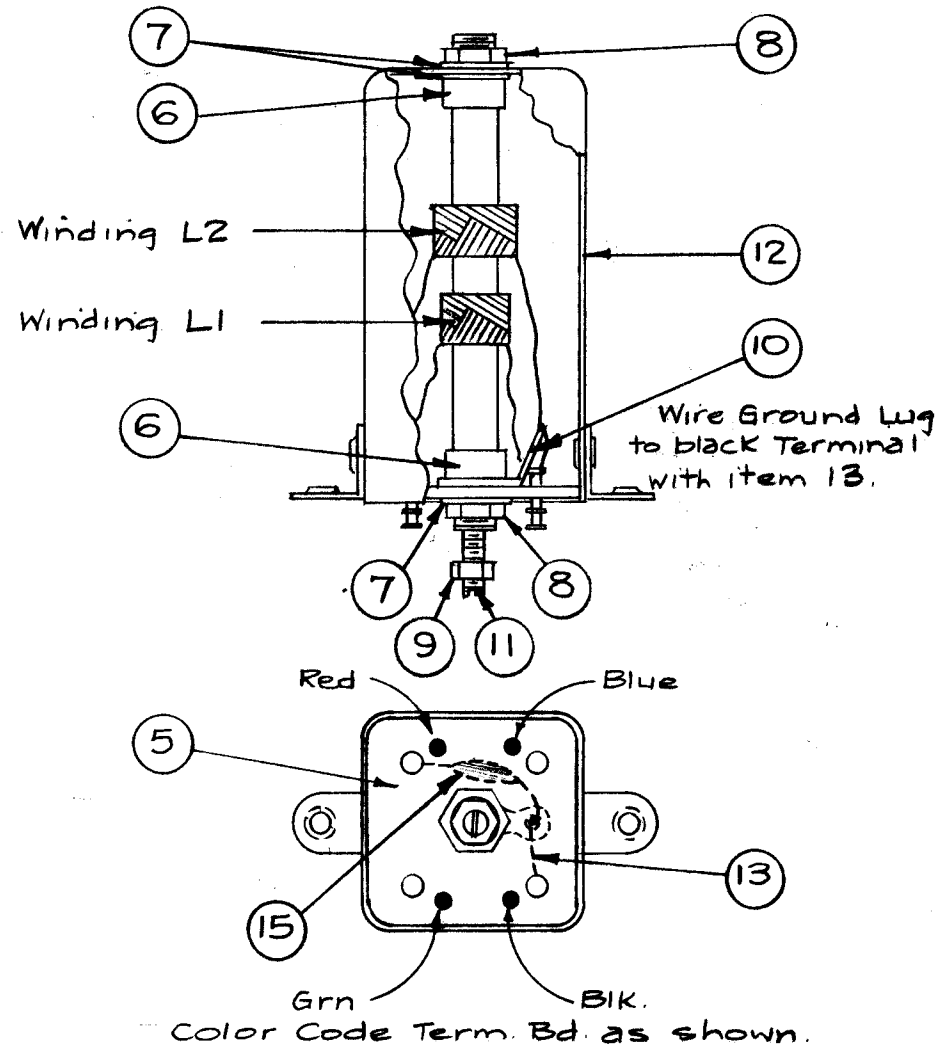


A-1511

Stamp Can as shown - 1/8 high black Gothic.  
 Note - Stamp TMC Insignia & Approval  
 on Side of Can.



Cement Coil form to bushing with  
 item 3 (GL-103)



Winding Machine Data

Cam Gear 105  
 Driver Gear 69  
 Cam .250

Winding Data

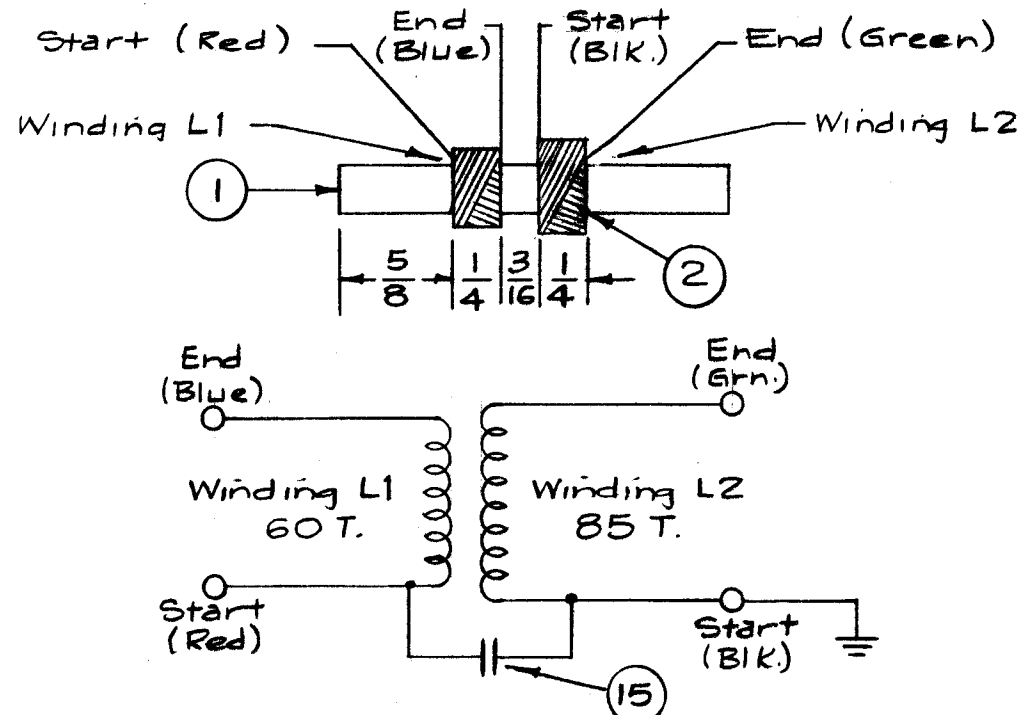
1. Start Winding L1 5/8" from end of form.
2. End Winding L1 at 60 turns.
3. Keep all leads approx. 3" long.
4. Stake leads to coil form with item 3 (GL-103)
5. Start Winding L2 3/16" from end of Winding L1.
6. End Winding L2 at 85 turns.
7. Stake leads to coil form.
8. Bake for 1/2 hour at 215° F.
9. Immediately apply coating of item 4 (GL-104-2)
10. Bake hard for 1/2 hour at 215° F.
11. Test as below.
12. Assemble as shown at left.

Test Data (w/out Core)

Winding L1 (Red-Blue) - 19 (18-20) microhenries.  
 Q = 55 or greater Freq. = 2.5 Mc.

Winding L2 (Grn-BIK) - 38.5 (37.5 to 39.5) microhenries.  
 Q = 50 or greater Freq. = 2.5 Mc

Use Boonton Radio Corp. Q Meter Model 160A or Equiv.



NOTICE TO PERSONS RECEIVING THIS DRAWING

THE TECHNICAL MATERIEL CORPORATION claims  
 proprietary right in the material disclosed hereon.  
 This drawing is issued in confidence for engineering  
 information only and may not be reproduced or used  
 to manufacture anything shown hereon without per-  
 mission from THE TECHNICAL MATERIEL CORPORA-  
 TION to the user. This drawing is loaned for mutual  
 assistance and is subject to recall at any time.

Property of:

THE TECHNICAL MATERIEL CORPORATION  
 MAMARONECK, NEW YORK

REQ. ITEM	PART NO.	DESCRIPTION	SYMBOL	
1	15	CC-100-16	Capacitor, Fixed	C171
X	14	BS-100	Solder, Soft	
X	13	WL-100-7	Wire, Buss	
1	12	A-1440	Can Ass'y.	
1	11	CI-116-5	Core, Tuning	
1	10	TE-104-3	Lug	
1	9	NTH0348BNG	Nut, Hex.	
2	8	NTH0832BNB	Nut, Hex.	
3	7	LW108MRN	Lockwasher, Int.	
2	6	SM-140-2	Bushing, Coil Mtg.	
1	5	PX-379	Terminal Board	
X	4	GL-104-2	Insulex, U85	
X	3	GL-103	Cement, Duco	
X	2	WI-104-54150Q5	Wire, Litz	
1	1	CF-122-2.062	Coil Form	

STOCK SIZE		THE TECHNICAL MATERIEL CORP. MAMARONECK, NEW YORK	
MATERIAL		TRANSFORMER, 2-4 MC, MF AMPL.	
16 <sup>3/12</sup> /58		DRAWN	FINAL APPROVAL
		MECH. DES. APP.	A-1511

ISSUE	ITEM	CHANGED FROM	DATE	CH. NO.	DRAFTS	CHECKER	ENG. APP.
TOLERANCES		SCALE:					
DEC. DIM. ±		MAXIMUM ALLOWABLE TOLERANCES HAVE					
FRAC. DIM. ± 1/64		BEEN DETERMINED AND ANY DEVIATIONS					
ANGULAR DIM. ±		WILL BE CAUSE FOR REJECTION.					
		REMOVE ALL BURRS AND SHARP EDGES					

REQ. PER UNIT	MODEL	PROJECT NO.	ASS'Y. NO.	DATE
1	SBE-3		AX-204	11-30-59
1	SBE-2		T110	3-12-58
USED ON				