

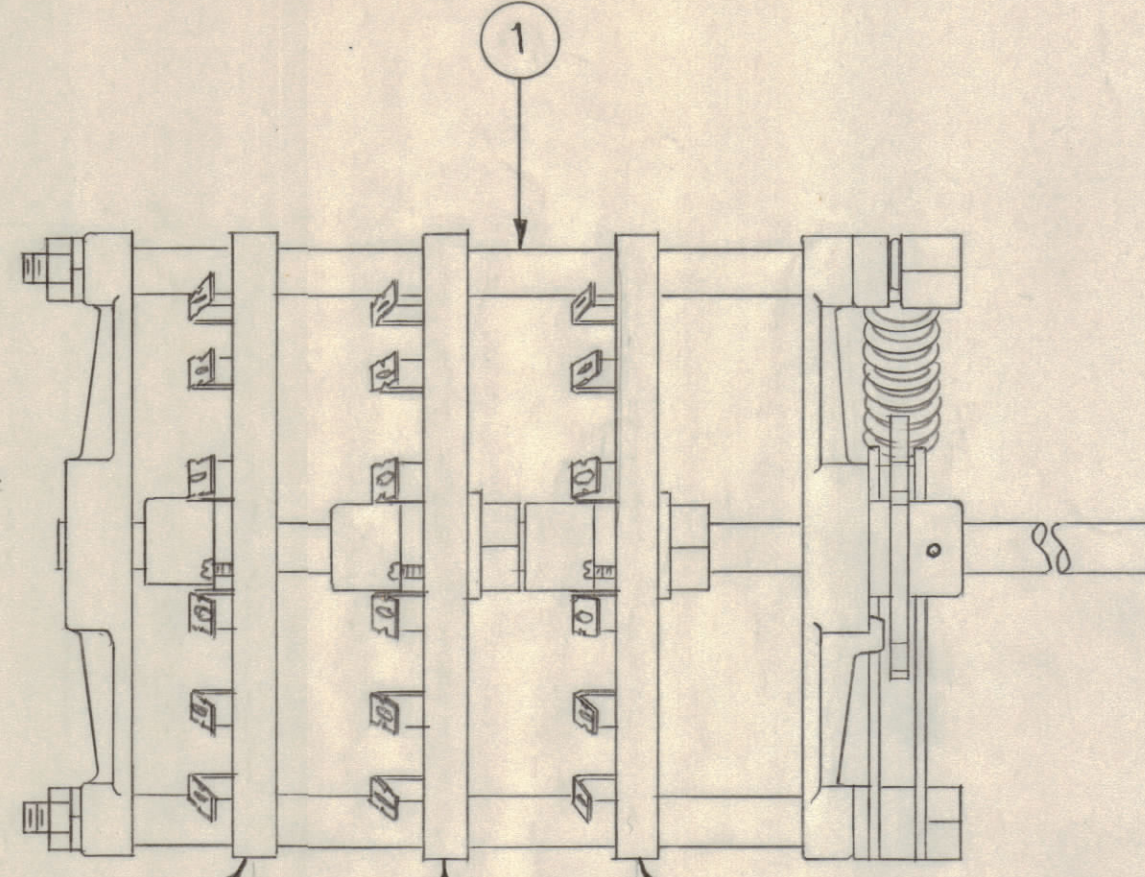
IF IT IS FOUND DESIRABLE TO CHANGE ANY TOLERANCE OR OTHER DETAIL SPECIFIED ON THIS DRAWING NOTIFY THE PURCHASER PROMPTLY.

MAXIMUM ALLOWABLE TOLERANCES HAVE BEEN DETERMINED AND DEVIATIONS WILL BE CAUSE FOR REJECTION. REMOVE ALL BURRS AND SHARP EDGES

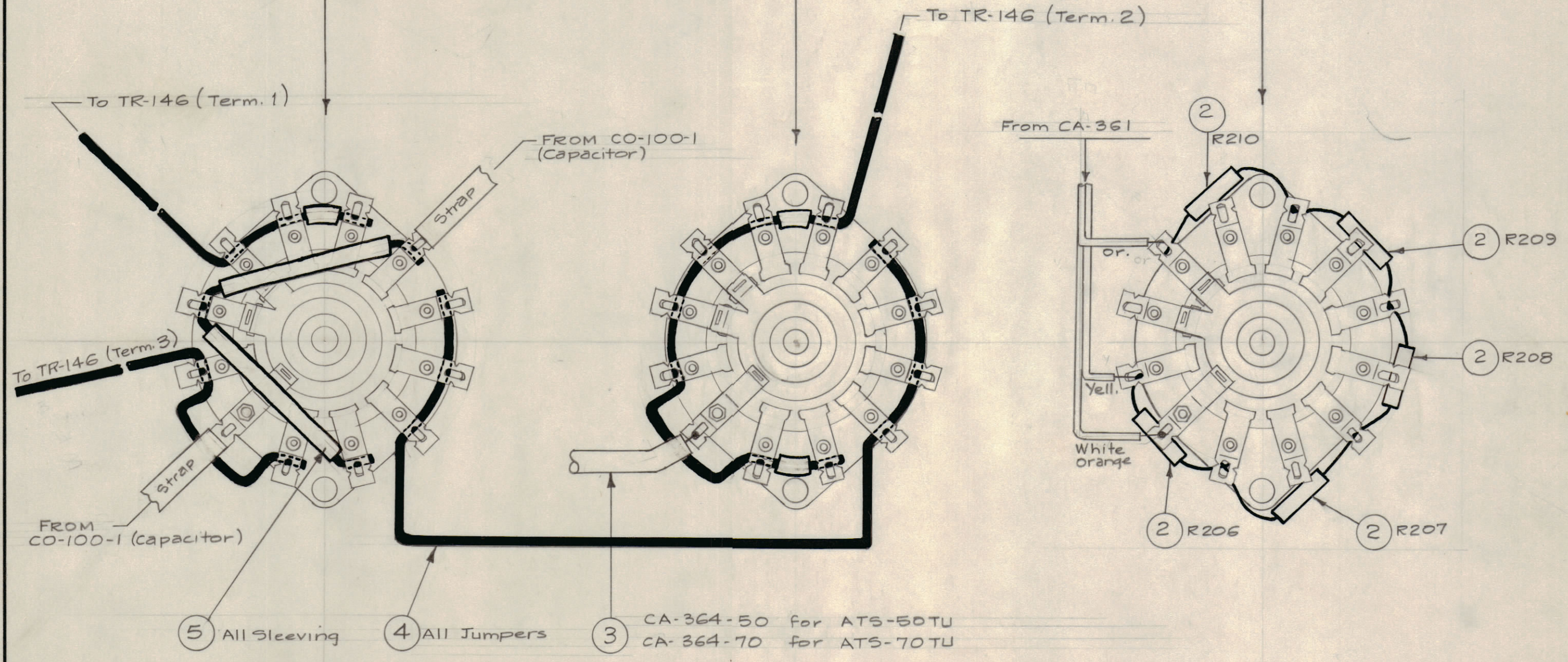
**NOTICE TO PERSONS RECEIVING THIS DRAWING**

THE TECHNICAL MATERIEL CORPORATION claims proprietary right in the material disclosed herein. This drawing is issued in confidence for engineering information only and may not be reproduced or used to manufacture anything shown hereon without permission from THE TECHNICAL MATERIEL CORPORATION to the user. This drawing is loaned for mutual assistance and is subject to recall at any time.

Property of:  
THE TECHNICAL MATERIEL CORPORATION  
MAMARONECK, NEW YORK



SECTION 3      SECTION 2      SECTION 1



A-1505

- 5 All Slewing
- 4 All Jumpers
- 3 CA-364-50 for ATS-50TU  
CA-364-70 for ATS-70TU

SECTIONS SHOWN AS VIEWED FROM REAR OF SWITCH

CA-364-50 for ATS-50TU }  
CA-364-70 for ATS-70TU }

R206  
R207  
R208  
R209  
R210

REQ. ITEM	PART NO.	DESCRIPTION	SYMBOL
X 6	BS-100	Solder, Soft	
X 5	PX-370-6-7	Insulation, Slewing, Teflon	
X 4	WL-100-1	Wire, Buss #10	
1 3	CA-364-XX	Cable Ass'y, RF	
5 2	RC30GF122K	Resistor, Fixed, Comp.	
1 1	SW-207	Switch, Rotary	S204

STOCK SIZE		THE TECHNICAL MATERIEL CORP. MAMARONECK, NEW YORK	
MATERIAL		SW-207 SWITCH ASS'Y.	
TYPE & TEMPER		16 4/22/58	MECH. DES. APP.
HEAT TREAT. SPEC.		DRAWN	ELEC. DES. APP.
FINISH & SPEC. NO.		CHECKED	FINAL APPROVAL
		A-1505	

ISSUE	ITEM	CHANGED FROM	DATE	CN. NO.	DRAFTS	CHECKER	ENG. APP.
TOLERANCES		SCALE:					
ALL OTHERS	DEC. DIM. ± FRAC. DIM. ± ANGULAR DIM. ±	DRILL, PUNCH, COMMERCIAL STOCK SIZES AND MANUFACTURERS TOLERANCES ARE NOT INCLUDED.					

1	ATS-TU	PROJECT NO.	ASS'Y. NO.	DATE
REQ PER UNIT	MODEL	PROJECT NO.	ASS'Y. NO.	DATE
USED ON				