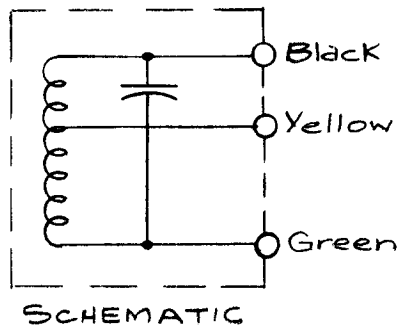
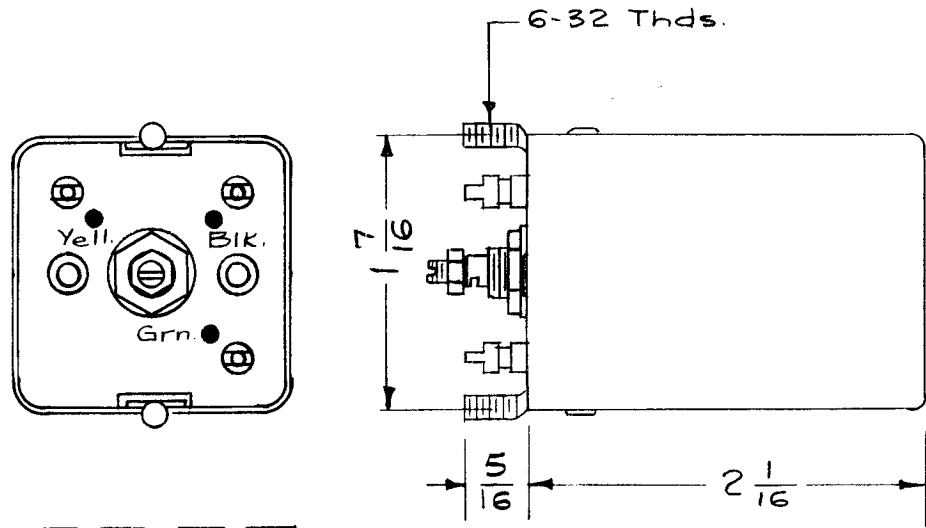


REQ. PER UNIT	USED ON			A-1507
	MODEL	ASS'Y. NO.	DATE	
1	MSR-3	23	4-10-58	



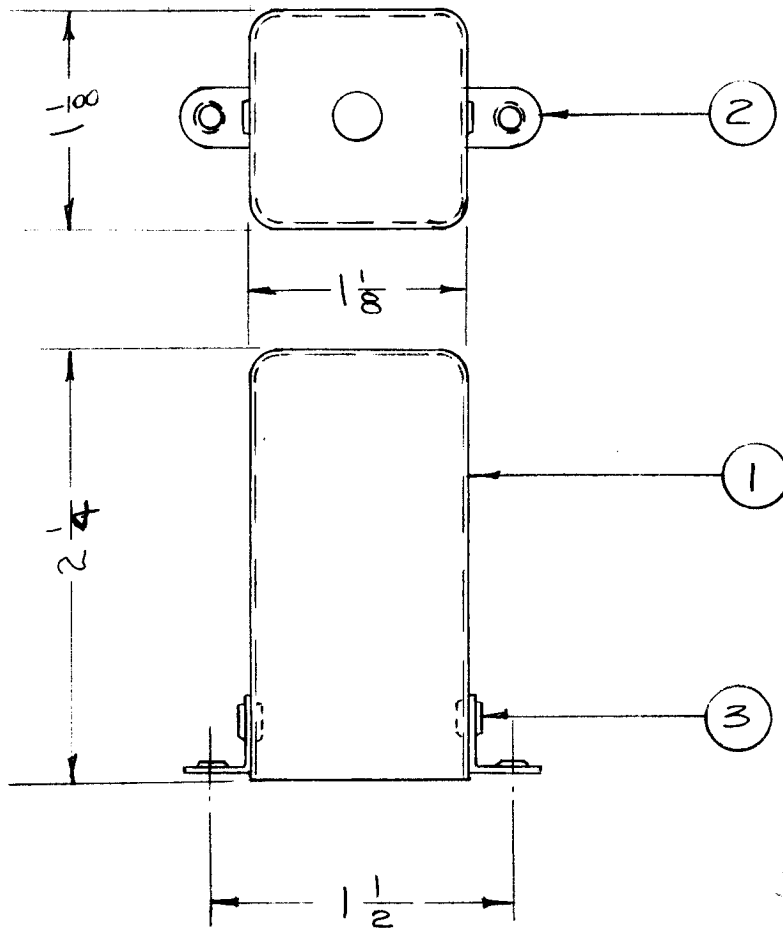
CASE- ALUMINUM  
Dimensions for Ref. Only.

							REQ. ITEM	PART NO.	DESCRIPTION	SYMBOL							
									THE TECHNICAL MATERIEL CORP. MAMARONECK, NEW YORK								
									FIRST OSCILLATOR								
ISSUE	ITEM	CHANGED FROM	DATE	CH. NO.	DRAFTS	CHECKER	ENG. APP.										
TOLERANCES			SCALE:		2A-1506												
DEC. DIM. ±			MAXIMUM ALLOWABLE TOLERANCES HAVE BEEN DETERMINED AND ANY DEVIATIONS WILL BE CAUSE FOR REJECTION. REM VE ALL BURRS AND SHARP EDGES					TYPE & TEMPER		HEAT TREAT. SPEC.		DRAWN		CHECKED		FINAL APPROVAL	
FRAC. DIM. ±								FINISH & SPEC. NO.		ELEC. DES. APP.		MECH. DES. APP.		A-1507			
ANGULAR DIM. ±																	

CUST. DWG.

REQ. PER UNIT	USED ON		
	MODEL	ASS'Y. NO.	DATE
1	SBE-2	A-1512	3-12-58
1	SBE-3	A-1513	11-30-59

A-1513



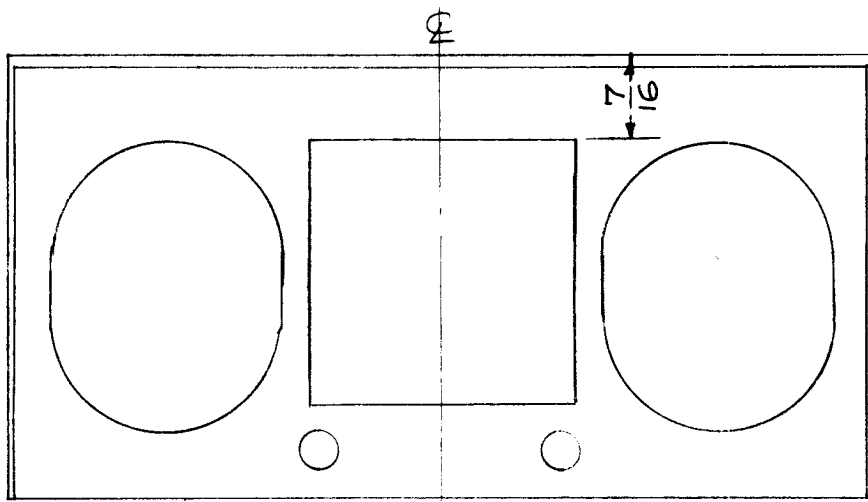
NOTICE TO PERSONS RECEIVING THIS DRAWING

THE TECHNICAL MATERIEL CORPORATION claims proprietary right in the material disclosed hereon. This drawing is issued in confidence for engineering information only and may not be reproduced or used to manufacture anything shown hereon without permission from THE TECHNICAL MATERIEL CORPORATION to the user. This drawing is loaned for mutual assistance and is subject to recall at any time.

Property of:

THE TECHNICAL MATERIEL CORPORATION  
MAMARONECK, NEW YORK

2	3	EY-100-1	Eyelet				
2	2	TE-167	Lug, Angle, Threaded				
1	1	FP-161	Can				
REQ. ITEM	PART NO.		DESCRIPTION	SYMBOL			
STOCK SIZE			<b>THE TECHNICAL MATERIEL CORP.</b> MAMARONECK, NEW YORK CAN ASS'Y., 2-4 MC HF MOD.				
MATERIAL							
TYPE & TEMPER			HEAT TREAT. SPEC.				
FINISH & SPEC. NO.			ELEC. DES. APP.	MECH. DES. APP.			
ISSUE ITEM		CHANGED FROM	DATE	CH. NO.	DRAFTS	CHECKER	ENG. APP.
TOLERANCES			SCALE:				
DEC. DIM. ±			MAXIMUM ALLOWABLE TOLERANCES HAVE BEEN DETERMINED AND ANY DEVIATIONS WILL BE CAUSE FOR REJECTION. REMOVE ALL BURRS AND SHARP EDGES				
FRAC. DIM. ± 1/64							
ANGULAR DIM. ±							
DRAWN			16 <sup>3/12</sup> /58	CHECKED		FINAL APPROVAL	
				A-1513			

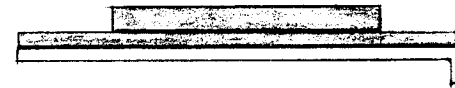
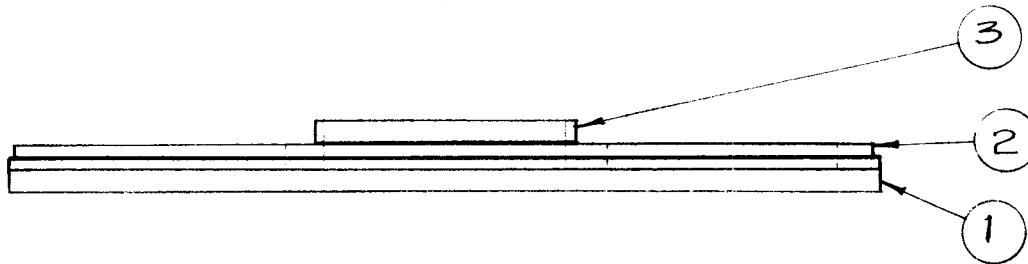


REQ. PER UNIT	USED ON		
	MODEL	ASS'Y. NO.	DATE
1	SBE-1&2		3-17-58

A-1514

Notes.

1. Cement item 2 to item 1, Keeping all holes matched.
2. Cement item 3 to item 2. Position as shown.



X	4	GL-101-1	CEMENT, PLIOBOND.
1	3	RY-124-1	SHEET RUBBER, 1/8 THK.
1	2	GA-142	GASKET, RETAINING PLATE
1	1	MS-1206	PLATE, RETAINING

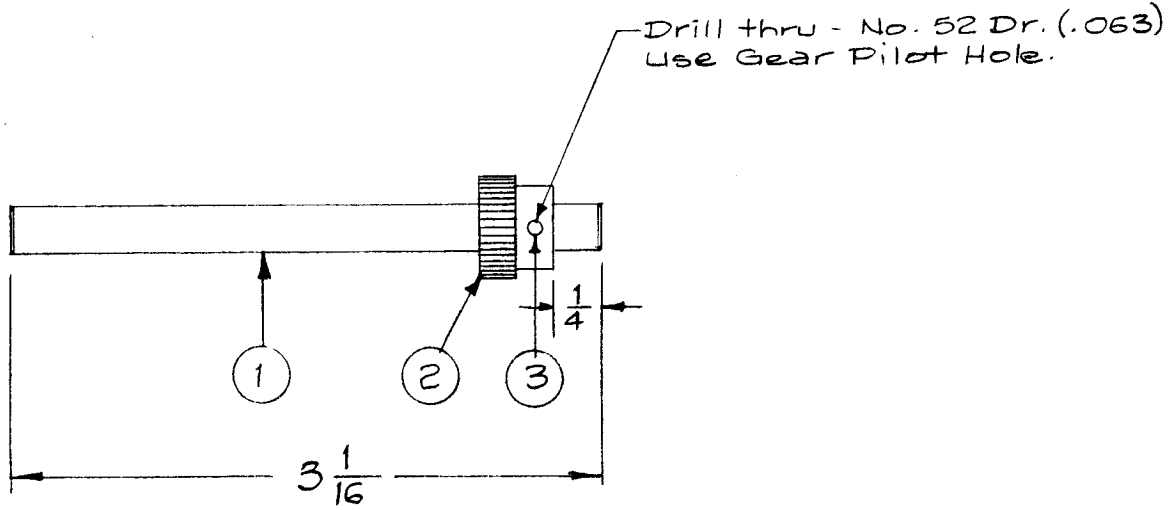

REQ. ITEM	PART NO.	DESCRIPTION	SYMBOL
<b>THE TECHNICAL MATERIEL CORP.</b> MAMARONECK, NEW YORK			
<b>RETAINING PLATE ASS'Y.</b>			
MATERIAL			
TYPE & TEMPER		HEAT TREAT. SPEC.	FINISH & SPEC. NO.
DRAWN		CHECKED	ELEC. DES. APP. MECH. DES. APP.

ISSUE	ITEM	CHANGED FROM	DATE	CH. NO.	DRAFTS	CHECKER	ENG. APP.
TOLERANCES			SCALE:				
DEC. DIM. ±			MAXIMUM ALLOWABLE TOLERANCES HAVE BEEN DETERMINED AND ANY DEVIATIONS WILL BE CAUSE FOR REJECTION.				
FRAC. DIM. ±			REMOVE ALL BURRS AND SHARP EDGES				
ANGULAR DIM. ±							

16 3/17/58 *JAS* *ch*  
*dm*  
 A-1514

REQ. PER UNIT	USED ON		
	MODEL	ASS'Y. NO.	DATE
1	SBE-2	A-1517	3-18-58
1	SBE-3	AP-100	11-30-59

A-1515 C



1	3	PN99-062-7	Pin, Roll	
1	2	GR-134	Gear, Spur, 1/24" PD.	
1	1	PM-69/RF3.06 B	Shaft, 1/4" D.	

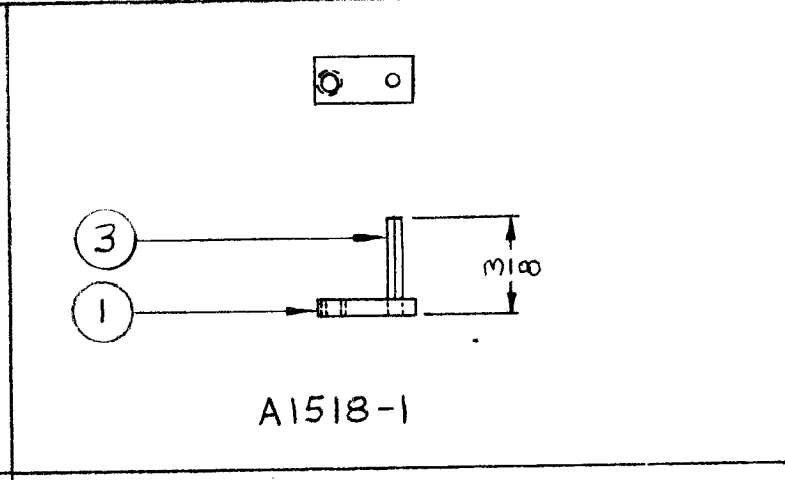
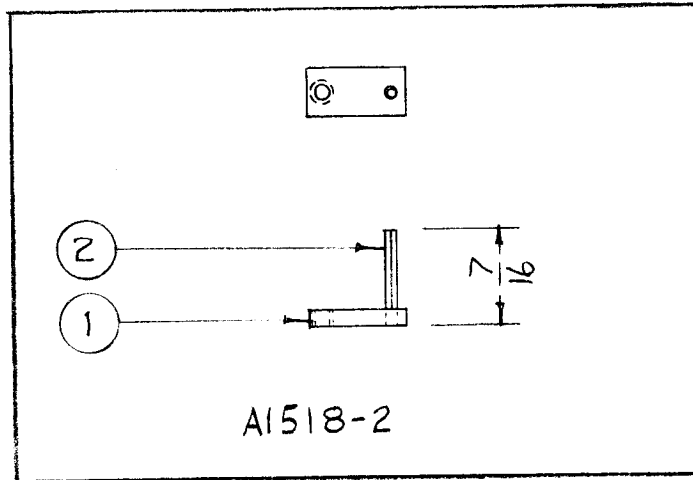
ISSUE	ITEM	CHANGED FROM	DATE	CH. NO.	DRAFTS	CHECKER	ENG. APP.
C		IT. 3 WAS PN79-062-8	2-23-66	15827	HLA	JCS	[Signature]
B	1	ITEM ① WAS PM-459-3.06 B	7-18-61	5281	G.D.L.	M.A.F.	[Signature]
A	1	ITEM ② WAS PN-109-2 (Same Mech. item)	10/30/59	1498	16	[Signature]	
TOLERANCES		SCALE: FULL					
DEC. DIM. ±		MAXIMUM ALLOWABLE TOLERANCES HAVE BEEN DETERMINED AND ANY DEVIATIONS WILL BE CAUSE FOR REJECTION.					
FRAC. DIM. ± 1/64		REMOVE ALL BURRS AND SHARP EDGES					
ANGULAR DIM. ±							

REQ.	ITEM	PART NO.	DESCRIPTION	SYMBOL
THE TECHNICAL MATERIEL CORP. MAMARONECK, NEW YORK				
M.F. DIAL SHAFT ASSY.				
SBE				
DRAWN			CHECKED	FINAL APPROVAL
FINISH & SPEC. NO.			ELEC. DES. APP.	MECH. DES. APP.
			[Signature]	[Signature]
			A-1515	C

TMC PART NO.	USED ON
A1518-1	MM100-2
A1518-2	MM100-1

REQ. PER UNIT	USED ON		
	MODEL	ASS'Y. NO.	DATE
1	MR-112	A-1509-100	3-20-58
1	MR-113	A-1509-3000	5-21-58
1	SWR-3000 PM		6-10-58

A-1518 B



REQ. ITEM	PART NO.	DESCRIPTION	SYMBOL
1	3	PN99-062-6	PIN, SPRING
1	2	PN99-062-7	PIN, SPRING
1	1	PM-483	Arm, Zero Adjust

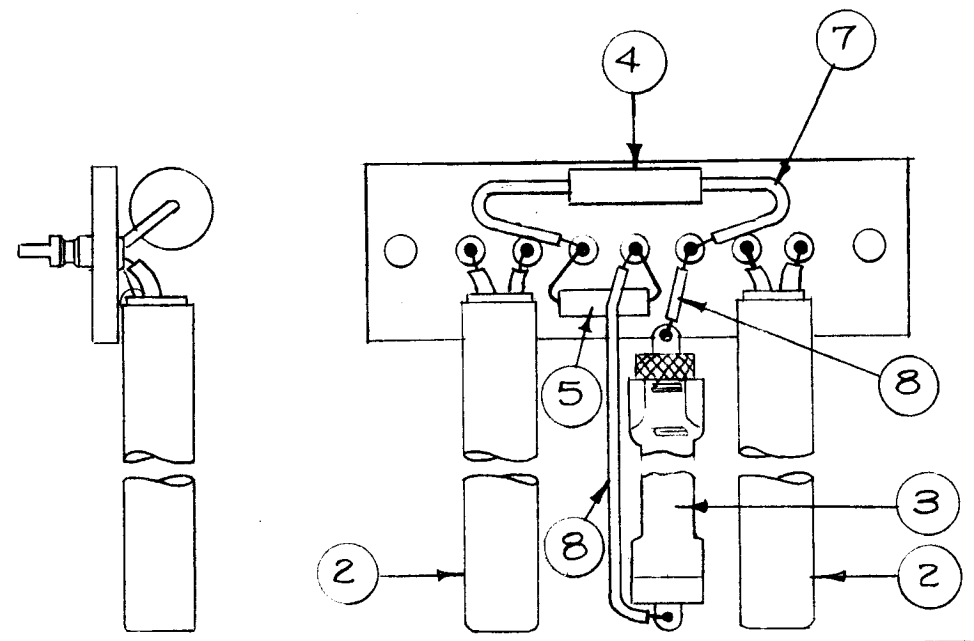
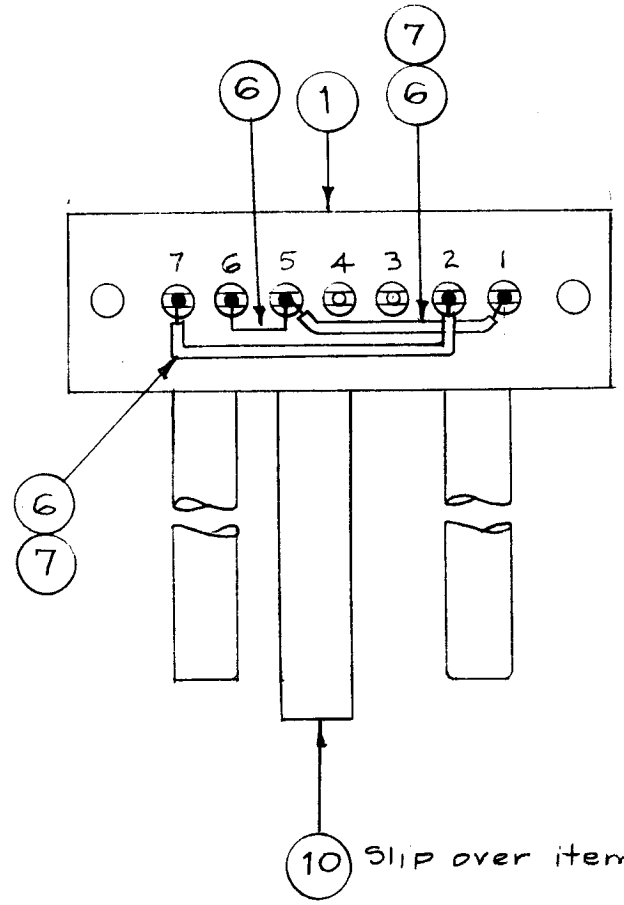
  

STOCK SIZE		THE TECHNICAL MATERIEL CORP. MAMARONECK, NEW YORK	
MATERIAL		ARM & PIN ASS'Y., ZERO ADJUST	
TYPE & TEMPER	HEAT TREAT. SPEC.	DRAWN	CHECKED
FINISH & SPEC. NO.		ELEC. DES. APP.	MECH. DES. APP.

ISSUE	ITEM	CHANGED FROM	DATE	CH. NO.	DRAFTS	CHECKER	ENG. APP.
B		IT. 2 WAS PN99-062-B	7-15-65	14-57	DVV	JCB	<i>[Signature]</i>
A		TMC. P/N CHART ADD. IT. 2 WAS PN99-062-8; IT. 3 ADD; EXIST. PICT. LABELLED (-2); A1518-1 ADD.	5-4-65	13962	28	JCB	<i>[Signature]</i>
TOLERANCES		SCALE: 1/2					
DEC. DIM. ±		MAXIMUM ALLOWABLE TOLERANCES HAVE BEEN DETERMINED AND ANY DEVIATIONS WILL BE CAUSE FOR REJECTION.					
FRAC. DIM. ± 1/64		REM VE ALL BURRS AND SHARP EDGES					
ANGULAR DIM. ±							

REQ. PER UNIT	USED ON		
	MODEL	ASS'Y. NO.	DATE
1	A-151G		3-27-58
1	SBE-3	AO-102	12-2-59

A-1520 B

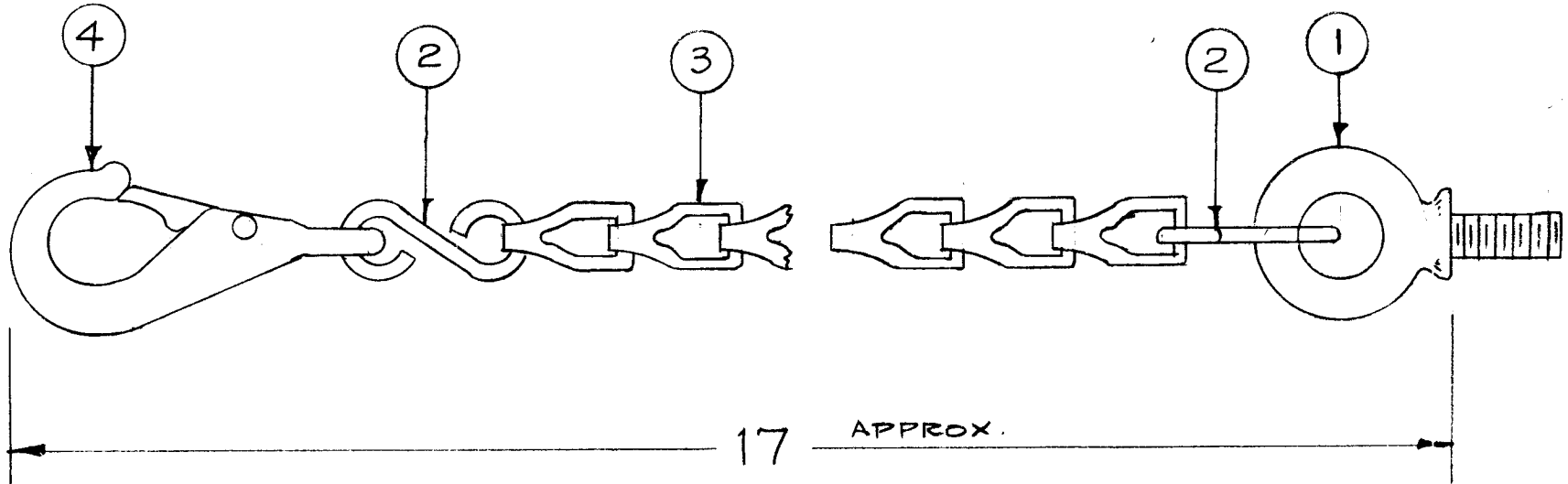


2 3/8"	10	PX-104-5-.375	Insulation, Sleeving (#3/8)	Brn.
X	9	BS-100	Solder, Soft	
X	8	LWC22(7)B-90	Cable, Insulated, Glass Yarn	White BIK.
X	7	PX-104-1-.034	Insulation, Sleeving (#20)	Blk.
X	6	WL-100-7	Wire, Buss (#22)	
X	5	RC20GF101K	Resistor, Fixed, Comp.	R20G
1	4	CN-113-1	CAP, FIXED, MYLAR DIELECTRIC	C222
1	3	SS-100-3	Switch, Sensitive, 80°	S110
2	2	RR-102-1	Element, Heater	R207 R208
1	1	PX-382	Terminal Bd., Heater	TB101

REQ. ITEM	PART NO.	DESCRIPTION	SYMBOL
<b>THE TECHNICAL MATERIEL CORP.</b> MAMARONECK, NEW YORK <b>HEATER TERMINAL BOARD</b> ASS'Y			
B	1	ITEM 4 WAS CN-100-3	4-7-61 4571 WAF [Signature]
A	1	ITEM 3 WAS SS-100-1	5-23-60 2297 [Signature]
ISSUE	ITEM	CHANGED FROM	DATE CH. NO. DRAFTS CHECKER ENG. APP.
TOLERANCES		SCALE:	
DEC. DIM. ±		MAXIMUM ALLOWABLE TOLERANCES HAVE BEEN DETERMINED AND ANY DEVIATIONS WILL BE CAUSE FOR REJECTION.	
FRAC. DIM. ±		REMOVE ALL BURRS AND SHARP EDGES	
ANGULAR DIM. ±			

TYPE & TEMPER	HEAT TREAT. SPEC.	DRAWN	CHECKED	FINAL APPROVAL
		RWB	[Signature]	A-1520 B
FINISH & SPEC. NO.		ELEC. DES. APP.	MECH. DES. APP.	

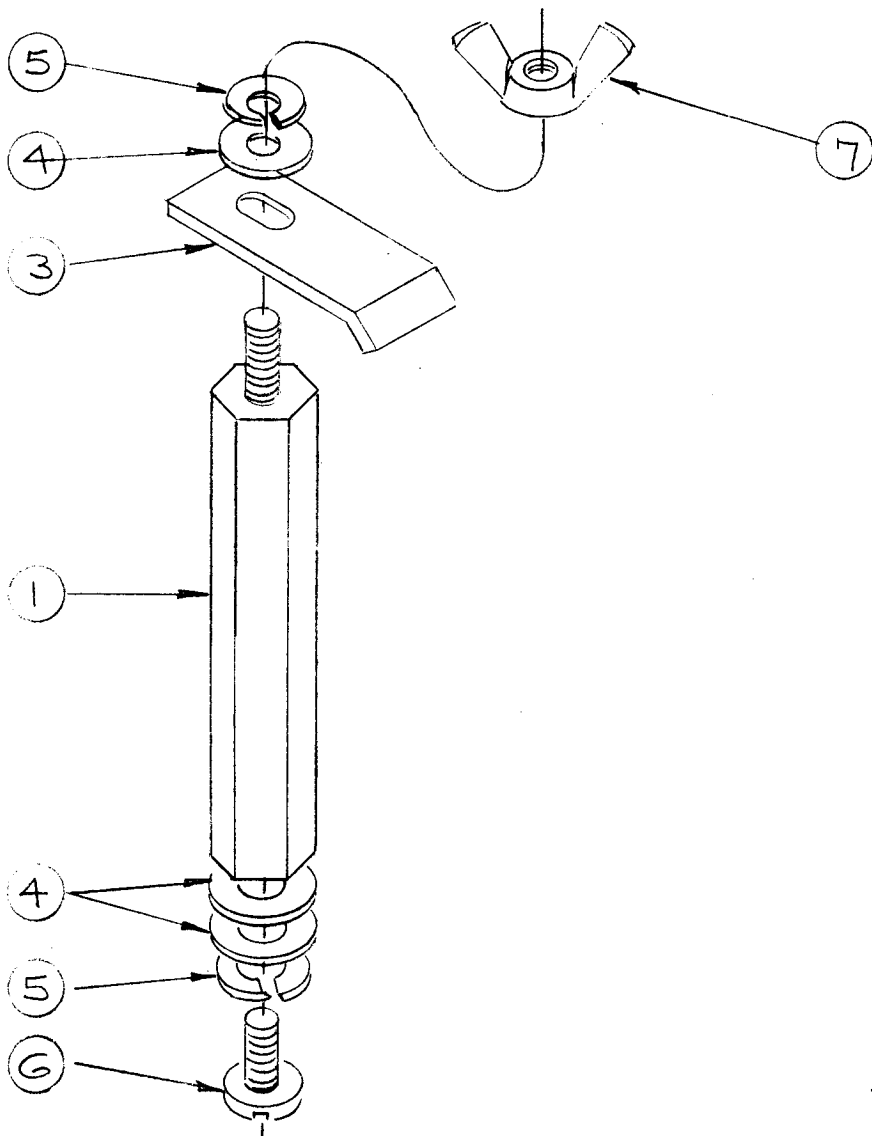
REQ. PER UNIT	USED ON			A-1522	△
	MODEL	ASS'Y. NO.	DATE		
1	ATS-TU		4-2-58		



1	4	PO-140-0-C	Eye, Snap	
1	3	CJ-101-1BC12.00	Chain, Safety	
2	2	PO-141-1-C	"S" Hook	
1	1	SC-116-C	Eyebolt, Flanged	
REQ. ITEM		PART NO.	DESCRIPTION	SYMBOL

A	2	ITEMS (1) WAS SC-116-N, (2) WAS PO-141-1-N, (3) WAS CJ-101-1BN12.00, (4) WAS PO-140-0-N	7-2-63	9386	<i>[Signature]</i>	<i>[Signature]</i>	<i>[Signature]</i>
ISSUE	ITEM	CHANGED FROM	DATE	CH. NO.	DRAFTS	CHECKER	ENG. APP.
	1	FINISH NOTE DELETED					
TOLERANCES			SCALE: <i>[Symbol]</i>				
DEC. DIM. ± FRAC. DIM. ± ANGULAR DIM. ±			MAXIMUM ALLOWABLE TOLERANCES HAVE BEEN DETERMINED AND ANY DEVIATIONS WILL BE CAUSE FOR REJECTION. REMOVE ALL BURRS AND SHARP EDGES				

STOCK SIZE			THE TECHNICAL MATERIEL CORP. MAMARONECK, NEW YORK		
MATERIAL			CHAIN ASS'Y.		
TYPE & TEMPER		HEAT TREAT. SPEC.	DRAWN	CHECKED	FINAL APPROVAL
FINISH & SPEC. NO.		ELEC. DES. APP.	MECH. DES. APP.	A-1522	△



REQ. PER UNIT	USED ON			A-1523	C
	MODEL	ASSY. NO.	DATE		
	TOC		8-5-50		

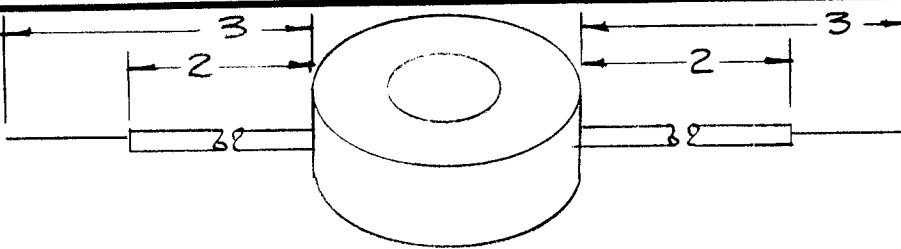
TMC PART NO	ITEM ONE SPACER
A-1523-1	PM-499-1
A-1523-2	PM-499-2
A-1523-3	PM-499-3

REQ. ITEM	ITEM	PART NO.	DESCRIPTION	SYMBOL
1	7	NT110-1032BN	NUT, WING	
1	6	SCBP1032BN8	SCREW, MACHINE	
2	5	LWS10MRN	LOCKWASHER, SPLIT	
3	4	FW100-3	WASHER, FLAT	
1	3	MS1214	CLAMP, CHASSIS	
	2		<del>WASHER, FLAT</del>	
1	1	SEE CHART	SPACER, SPECIAL, THREADED	

C		HARDWARE UPDATED		6-29-67	18300	L.A.K.	6 P. AD
B	1	PM-454 ADDED	ITEM 2 WAS SC-127-1	8/11/58	2	file	file
A	1	ADDED - 3		9/19/58	1	file	file
ISSUE	ITEM	CHANGED FROM	DATE	CH. NO.	DRAFTS	CHECKER	ENG. APP.
TOLERANCES			SCALE:				
DEC. DIM. ±			MAXIMUM ALLOWABLE TOLERANCES HAVE BEEN DETERMINED AND ANY DEVIATIONS WILL BE CAUSE FOR REJECTION.				
FRAC. DIM. ±			REMOVE ALL BURRS AND SHARP EDGES				
ANGULAR DIM. ±							
TYPE & TEMPER		HEAT TREAT. SPEC.		DRAWN		CHECKED	
FINISH & SPEC. NO.		ELEC. DES. APP.		MECH. DES. APP.		FINAL APPROVAL	
						A-1523	
						C	





**WINDING SPECIFICATIONS**

1. Wind coil to 400 mhy.
2. Bake for one half hour at 215° F.
3. Submerge hot coil in item 5, for not more than 5 seconds.
4. Test the coil for:
  - A. Inductance & Q on impedance bridge.
  - b. Self resonant frequency in accordance with S-206. Do not add capacitance across coil but tune audio Osc. to obtain peak. This should occur between 18 Kc & 19 Kc. If above 19 Kc., dip in wax for longer period of time.

Ref: TMC Spec. S-337 (Winding)

REQ. PER UNIT	USED ON			A-1530
	MODEL	ASSY. NO.	DATE	
1	PX-152		4-18-58	

**ELECTRICAL SPECIFICATIONS**

400 mh + 5%  
 Q greater than 40  
 R dc - 85 to 95 Ohms

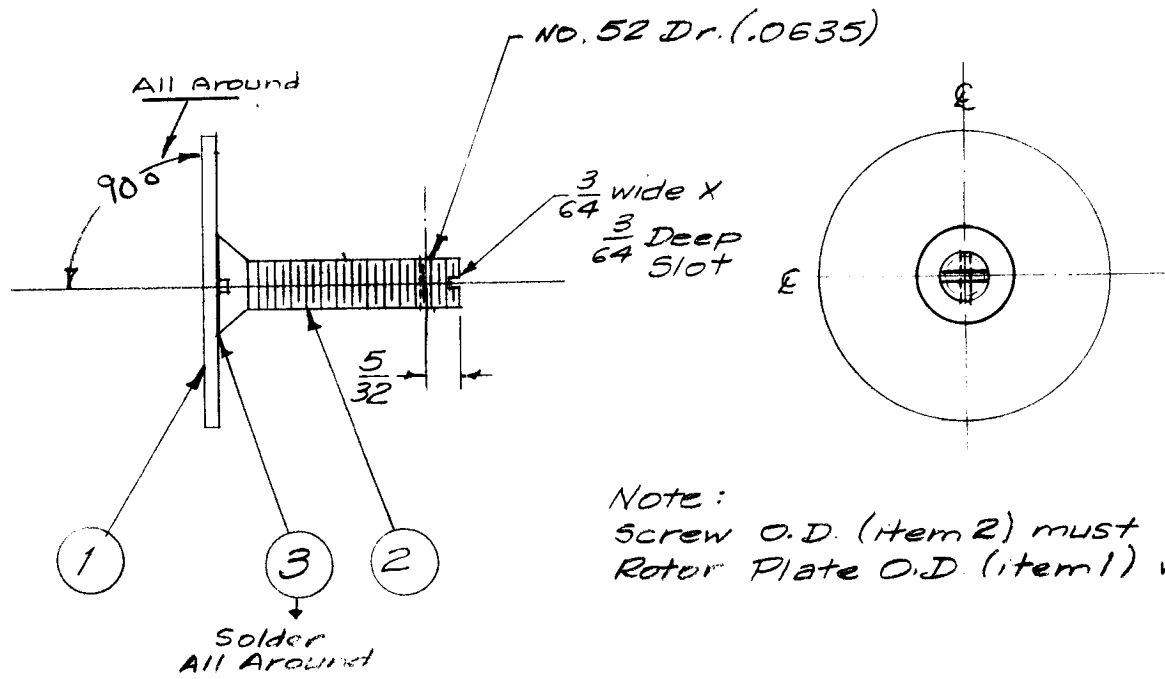
**NOTE:** THIS DRAWING (A-1530) TO BE USED ONLY WHEN CL-117 IS NOT PURCHASED OUTSIDE.

REQ. ITEM	PART NO.	DESCRIPTION	SYMBOL
X 6	BS-100	SOLDER, SOFT	
X 5	GL-110	WAX, IMPREGNATING	
X 4	PX-104-1-.034	INSULATION, SLEEVING	
X 3	LWC28(7)UO	CABLE, INSULATED	
185ft 2	WI-123-34	WIRE, MAGNET	
1 1	CI-103-7	CORE, MOLYBDENUM, PERMALLOY POWDER	

STOCK SIZE		THE TECHNICAL MATERIEL CORP. MAMARONECK. NEW YORK											
MATERIAL													
COIL, 400 mh													
ISSUE	ITEM	CHANGED FROM	DATE	CH. NO.	DRAFTS	CHECKER	ENG. APP.	TYPE & TEMPER	HEAT TREAT. SPEC.	DRAWN	CHECKED	FINAL APPROVAL	
TOLERANCES		SCALE:						16 <sup>a</sup> /18/58					A-1530
DEC. DIM. ±		MAXIMUM ALLOWABLE TOLERANCES HAVE BEEN DETERMINED AND ANY DEVIATIONS WILL BE CAUSE FOR REJECTION. REMOVE ALL BURRS AND SHARP EDGES								P.L.K.			
FRAC. DIM. ±													
ANGULAR DIM. ±													
								FINISH & SPEC. NO.		ELEC. DES. APP. MECH. DES. APP.			

REQ. PER UNIT	USED ON			A-1542
	MODEL	ASS'Y. NO.	DATE	



Note:  
Screw O.D. (Item 2) must be concentric with Rotor Plate O.D. (item 1) within  $\pm .005$

Dele. from RFA-1 6-2-58 16 (use PM-492)

X	3	BS-101-1	Solder, Silver
1	2	SCFS2520BR20	Screw, Machine (modify as shown)
1	1	MS-779	Plate, Rotor, Neutral. Cap.

ISSUE	ITEM	CHANGED FROM	DATE	CH. NO.	DRAFTS	CHECKER	ENG. APP.	REQ. ITEM	PART NO.	DESCRIPTION	SYMBOL		
								<b>THE TECHNICAL MATERIEL CORP.</b> MAMARONECK. NEW YORK <b>ROTOR ASS'Y., NEUTRALIZING</b> <b>CAPACITOR</b>					
								<b>MATERIAL</b>					
								<b>TYPE &amp; TEMPER HEAT TREAT. SPEC.</b>					
								<b>FINISH &amp; SPEC. NO.</b>					
								<b>DRAWN</b>		<b>CHECKED</b>		<b>FINAL APPROVAL</b>	
								16 5/20/58				A-1542	
								5245 Silver Plate .0002				A-1542	

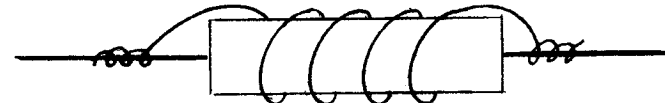
**FABRICATION**

1. Wind 4 Turns of Item 2 (Wir )  
 Clos to Body of Resistor, Turns to  
 be Spaced Evenly Along Body.

REQ. PER UNIT	USED ON		
	MODEL	ASS'Y. NO.	DATE
1 EACH	SBE-2		
1 (-2)	RFA-1	PS-201	5-27-58
1 EACH	SBE-3	AX-204	11-30-59

A-1543 A

TMC MFG. NO.	ITEM 1 RESISTOR	TMC PART NO.
A-1543-1	RC20GF100K	AX-160
A-1543-2	RC20GF390K	AX-161



SPACE TURNS EVENLY

X	3	ES-100	SOLDER, SOFT						
X	2	WL-100-7	WIRE, BUSS BAR						
1	1	See Chart	RESISTOR						
REQ. ITEM	PART NO.		DESCRIPTION	SYMBOL					
	STOCK SIZE		<b>THE TECHNICAL MATERIEL CORP.</b> MAMARONECK, NEW YORK PARASITIC SUPPRESSER						
	MATERIAL								
A	1	CHART CHG'D. TO INCLUDE TMC PART#	8/26/59	1238	16	<i>[Signature]</i>			
ISSUE	ITEM	CHANGED FROM	DATE	CH. NO.	DRAFTS	CHECKER	ENG. APP.		
TOLERANCES			SCALE:						
DEC. DIM. ±			MAXIMUM ALLOWABLE TOLERANCES HAVE BEEN DETERMINED AND ANY DEVIATIONS WILL BE CAUSE FOR REJECTION. REMOVE ALL BURRS AND SHARP EDGES						
FRAC. DIM. ±									
ANGULAR DIM. ±									
TYPE & TEMPER		HEAT TREAT. SPEC.		DRAWN		CHECKED		FINAL APPROVAL	
FINISH & SPEC. NO.				ELEC. DES. APP.		MECH. DES. APP.		A-1543 A	

**NOTICE TO PERSONS RECEIVING THIS DRAWING**

THE TECHNICAL MATERIEL CORPORATION claims proprietary right in the material disclosed herein. This drawing is issued in confidence for engineering information only and may not be reproduced or used to manufacture anything shown hereon without permission from THE TECHNICAL MATERIEL CORPORATION to the user. This drawing is loaned for mutual assistance and is subject to recall at any time.

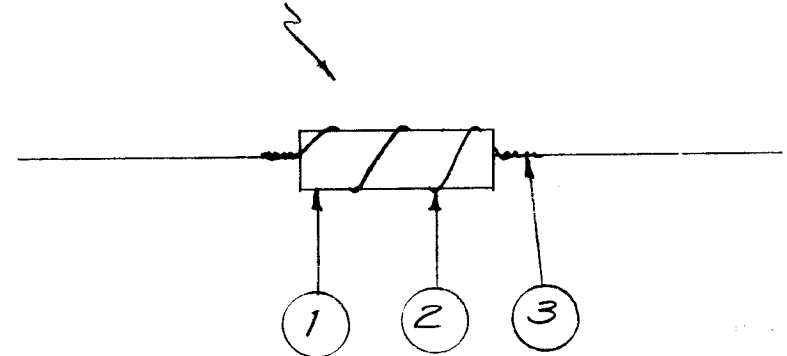
Property of:

**THE TECHNICAL MATERIEL CORPORATION**  
MAMARONECK, NEW YORK

REQ. PER UNIT	USED ON		
	MODEL	ASS'Y. NO.	DATE
2-1	RFA-1	PS 203,204	5/27/59
2-3	TTR-10	PWR. AMPL.	9-27-62
1-2	TTR-10	PWR. AMPL.	9-27-62

A-1546 F

(See Chart for Req. # of Turns)  
Turns to be equally spaced



NOTE: NO. OF TURNS SHOWN IN PICTORIAL IS NOT NECESSARILY NO. SHOWN IN CHART.

TMC MF G. NO	TMC PART NO. REF.	ITEM #1 RESISTOR	ITEM #2 WIRE	WIRE SIZE	# OF TURNS
A-1546-1	AX-162	RC32GF470J	WL-100-7	22	2
A-1546-2	AX-163	RC20GF470J	WL-100-7	22	5
A-1546-3	AX-391	RC42GF470 J	WL-100-4	16	4
A-1546-4	N/A	RC42GF182J	WI125-9	24	12
A1546-5	N/A	RC32GF124J	WI123-20	20	9

ISSUE	ITEM	CHANGED FROM	DATE	CH. NO.	DRAFTS	CHECKER	ENG. APP.
F		ADD-5	12/5/73	21095	GE	ED	ED
E		ON - 4 IT. #1 WAS RC42GF102J	6/3/70	19869	KL	WLB	FB
D		ADD - 4	3/25/70	19796	CV	WLB	WLB
C		CHG'D RES. TOL. FR 'K. TO 'J', A-1546-1 RES. WAS RC30	8-8-66	16715	RME	WLB	WLB
B	2	A-1546-3 ADDED TO CHART	9-27-62	7239	92	WLB	WLB
A	2	MODEL TTR-10 ADDED ADDED A-1546-2	8-10-59	1179	WLB	WLB	WLB

REQ. ITEM	PART NO.	DESCRIPTION	SYMBOL
X 3	BS-100	Solder, Soft	
X 2	See Chart	Wire	
1 1	See Chart	Resistor, Fixed, Comp.	

STOCK SIZE		THE TECHNICAL MATERIEL CORP. MAMARONECK. NEW YORK	
MATERIAL		SUPPRESSOR, PARASITIC	
TYPE & TEMPER	HEAT TREAT. SPEC.	DRAWN	CHECKED
FINISH & SPEC. NO.		ELEC. DES. APP.	MECH. DES. APP.

REQ. PER UNIT	USED ON		
	MODEL	ASS'Y. NO.	DATE
1	ATS-50/70CU		6-3-58
1	ATS-50/70CU-2		

A-1552

**WINDING**

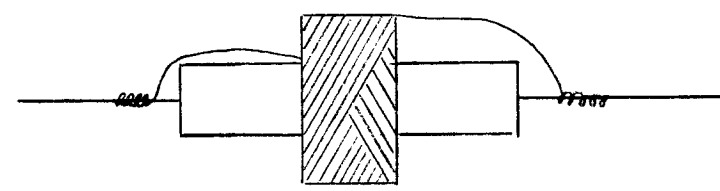
250 TURNS OF ITEM 2  
UNIVERSAL WOUND.

**MACHINE DATA**

DRIVER GEAR 69  
CAM GEAR 105  
CAM .250

**ELECTRICAL DATA**

L - 300  $\mu$ h  $\pm$  2%  
Q - < 10  
F - 790 KC (MEASURING F)



**FABRICATION**

STAKE LEADS WITH ITEM 4  
BAKE DRY AT 100° F.  
SOLDER LEADS AS SHOWN  
COAT WITH ITEM 3  
BAKE DRY AT 100° F

X	5	BS-100	SOLDER, SOFT.
X	4	GL-103	CEMENT
X	3	GL-102	Q MAX.
X	2	WI-107-19	MAGNET WIRE DOUBLE SILK COVERED
1	1	CC21SL300J	CAPACITOR, FIXED, CERAMIC DIELEC.

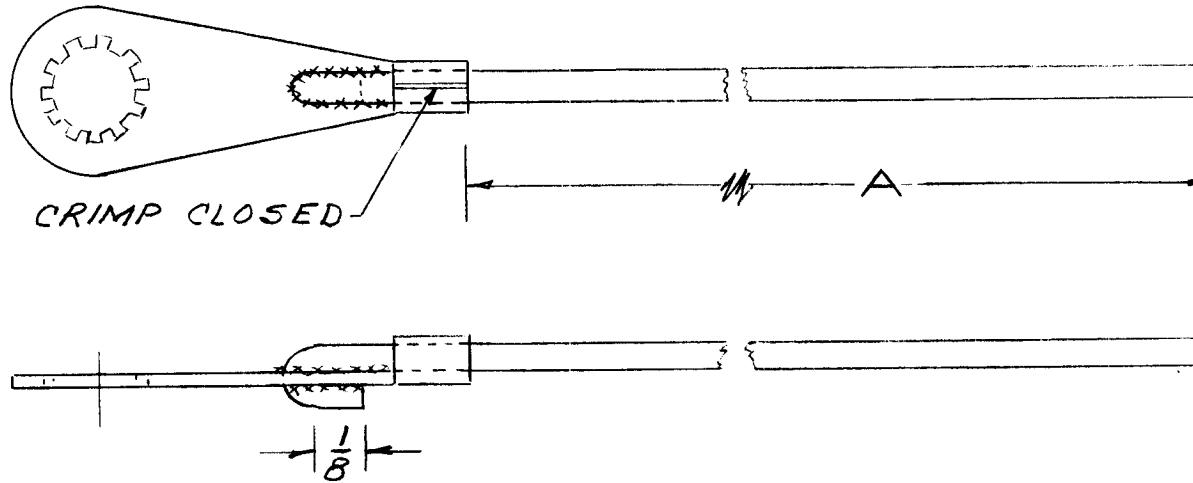
ISSUE	ITEM	CHANGED FROM	DATE	CH. NO.	DRAFTS	CHECKER	ENG. APP.
TOLERANCES			SCALE:				
DEC. DIM. $\pm$			MAXIMUM ALLOWABLE TOLERANCES HAVE BEEN DETERMINED AND ANY DEVIATIONS WILL BE CAUSE FOR REJECTION. REMOVE ALL BURRS AND SHARP EDGES				
FRAC. DIM. $\pm$							
ANGULAR DIM. $\pm$							

REQ. ITEM	PART NO.	DESCRIPTION	SYMBOL
	CP0	THE TECHNICAL MATERIEL CORP. MAMARONECK. NEW YORK	
	STOCK SIZE	FREQUENCY COMPENSATOR	
	MATERIAL		
	CP0	6/3/58	
	CP0	DRAWN	CHECKED
	CP0	FINAL APPROVAL	
	FINISH & SPEC. NO.	ELEC. DES. APP.	MECH. DES. APP.

OMP JGR

A-1552

TMC NO.	DIM. "A"	FORMERLY WAS	ITEM 2 BLANK LENGTH	REQ. PER UNIT	USED ON			A-1563	C
					MODEL	ASS'Y. NO.	DATE		
A-1563-1	2 $\frac{11}{16}$	A-1563	3 $\frac{1}{4}$	2	RTB-3	A-1562	8/1/58		
A-1563-2	1 $\frac{7}{16}$	A-171	2						
A-1563-3	4	A-2513	4 $\frac{9}{16}$						
A-1563-4	6-1/2	A-3055	7-1/16						



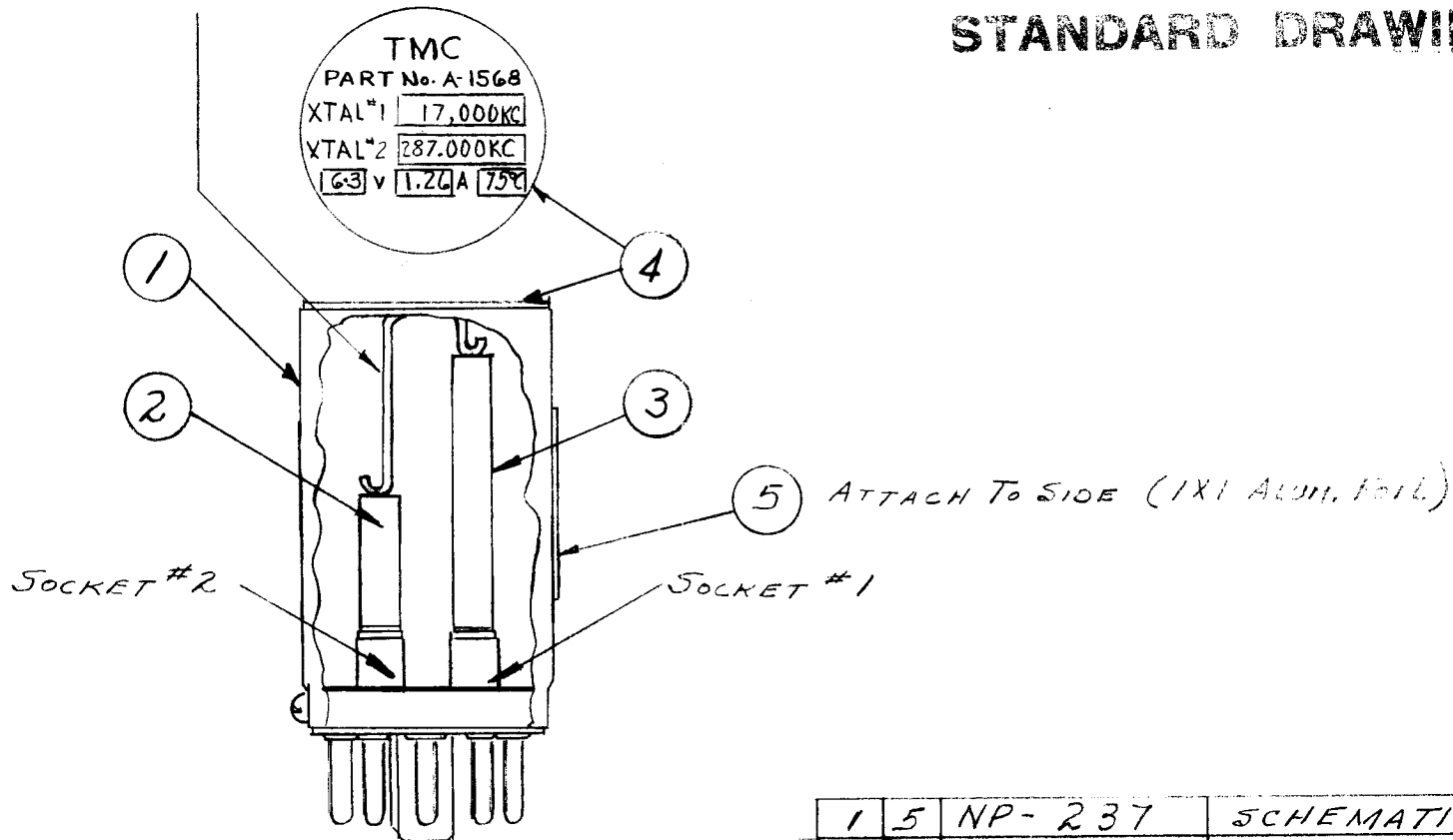
REQ.	ITEM	PART NO.	DESCRIPTION	SYMBOL
X	3	BS-100	SOLDER SOFT	
	2	WL-100-3	WIRE	
	1	TE-112-3	TERMINAL LOCKING CRIMP TYPE	
MATERIAL			THE TECHNICAL MATERIEL CORP. MAMARONECK, NEW YORK	
STOCK SIZE			LUG, ASSEMBLY	
MATERIAL				
TOLERANCES			SCALE: <i>cto</i>	
DEC. DIM. ±			MAXIMUM ALLOWABLE TOLERANCES HAVE BEEN DETERMINED AND ANY DEVIATIONS WILL BE CAUSE FOR REJECTION.	
FRAC. DIM. ± 1/32			REMOVE ALL BURRS AND SHARP EDGES	
ANGULAR DIM. ±				
TYPE & TEMPER			HEAT TREAT. SPEC.	DRAWN
FINISH & SPEC. NO.			ELEC. DES. APP.	MECH. DES. APP.
			A-1563 C	

ISSUE	ITEM	CHANGED FROM	DATE	CH. NO.	DRAFTS	CHECKER	ENG. APP.
C	1	A-1563-4 ADDED TO CHART	8-30-62	7165	G.S.	<i>yde</i>	<i>[Signature]</i>
B	1	ADDED A-1563-3 TO CHART	7-27-62	—	V.R.K.	<i>[Signature]</i>	<i>[Signature]</i>
A	2	TMC Pt. No. Chart Added	11-13-61	5862	L.H.	<i>[Signature]</i>	<i>[Signature]</i>
	1	Item 2 Was 3-1/4 Req'd.					

REQ. PER UNIT	USED ON			A-1568	C
	MODEL	ASS'Y. NO.	DATE		
1	SBE-2		8-19-58		

SPRING (SUPPLIED BY MFG.)  
HOLDS ITEMS 2 & 3 IN PLACE.

### STANDARD DRAWING



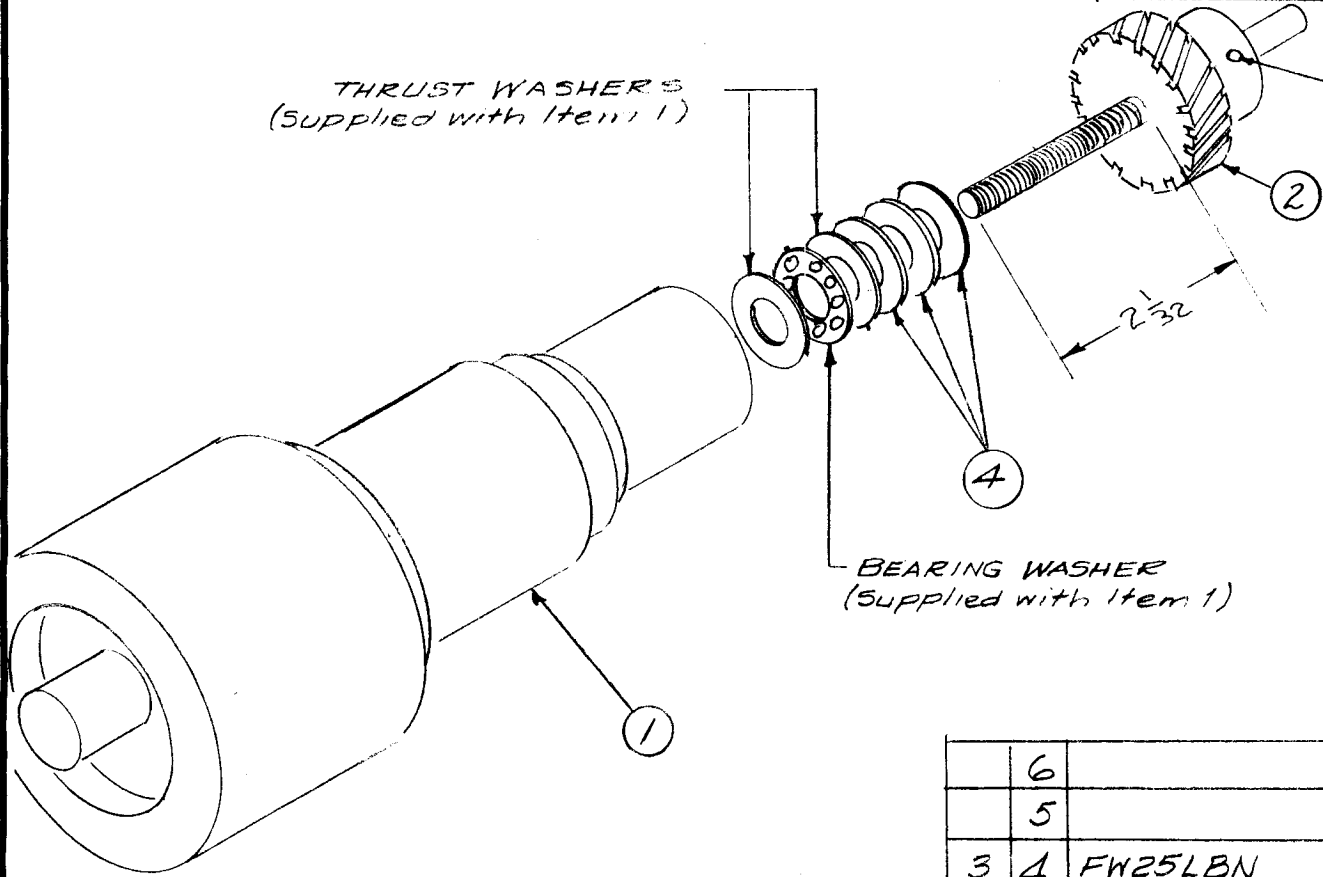
1	5	NP-237	SCHEMATIC DIAGRAM	
1	4	NP-236	NAME PLATE IDENTIFICATION	
1	3	CR-112	CRYSTAL 17KC	Y109
1	2	CR47/U287,000KC	CRYSTAL 287KC	Y110
1	1	PO-147	OVEN, CRYSTAL	

ISSUE	ITEM	CHANGED FROM	DATE	CH. NO.	DRAFTS	CHECKER	ENG. APP.
C	2	KEY RELOCATED	10.21.64	12723			
	1	IT.2 WAS CR47/U.287P					
B	1	ITEM3 WAS CR50/U	4-8-64	11191	AM		
A	1	Pictorial Clarified	12-28-60	3825	RU.		
TOLERANCES		SCALE:					
DEC. DIM. ±		MAXIMUM ALLOWABLE TOLERANCES HAVE BEEN DETERMINED AND ANY DEVIATIONS WILL BE CAUSE FOR REJECTION.					
FRAC. DIM. ±		REMOVE ALL BURRS AND SHARP EDGES					
ANGULAR DIM. ±							

REQ. ITEM	PART NO.	DESCRIPTION	SYMBOL
THE TECHNICAL MATERIEL CORP. MAMARONECK. NEW YORK			
CRYSTAL ASS'Y			
SBE-2			
MATERIAL		8-19-58	
TYPE & TEMPER		DRAWN	CHECKED
HEAT TREAT. SPEC.		RWB	DRB
FINISH & SPEC. NO.		ELEC. DES. APP.	MECH. DES. APP.
			A-1568
			C

REQ. PER UNIT	USED ON		
	MODEL	ASS'Y. NO.	DATE
1	RTF	ID-229	9/3/58
1	RTF-2	P/A	12-5-58

A-1569 A



THRUST WASHERS  
(Supplied with Item 1)

③ DRILL THRU & PIN ON ASS'Y.  
(.062 DIAM)

BEARING WASHER  
(Supplied with Item 1)

6			
5			
3	4	FW25LBN	WASHER, FLAT
1	3	PN-59-062-16	PIN, SPRING
1	2	GR-128	GEAR, HELICAL, NYLON
1	1	CB-126-3	CAPACITOR, VARIABLE VACUUM

ISSUE	ITEM	CHANGED FROM	DATE	CH. NO.	DRAFTS	CHECKER	ENG. APP.
A		BIM UPDATED	11.18.66	17263	WHO	<i>[Signature]</i>	<i>[Signature]</i>
TOLERANCES			SCALE:		ID-229		
DEC. DIM. ±			MAXIMUM ALLOWABLE TOLERANCES HAVE BEEN DETERMINED AND ANY DEVIATIONS WILL BE CAUSE FOR REJECTION. REMOVE ALL BURRS AND SHARP EDGES				
FRAC. DIM. ±							
ANGULAR DIM. ±							

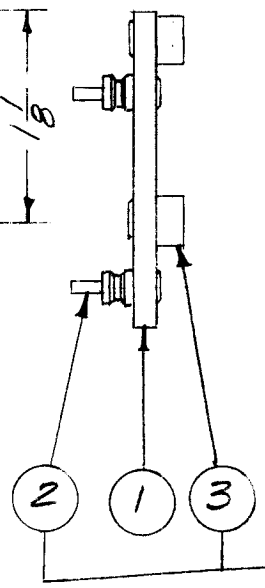
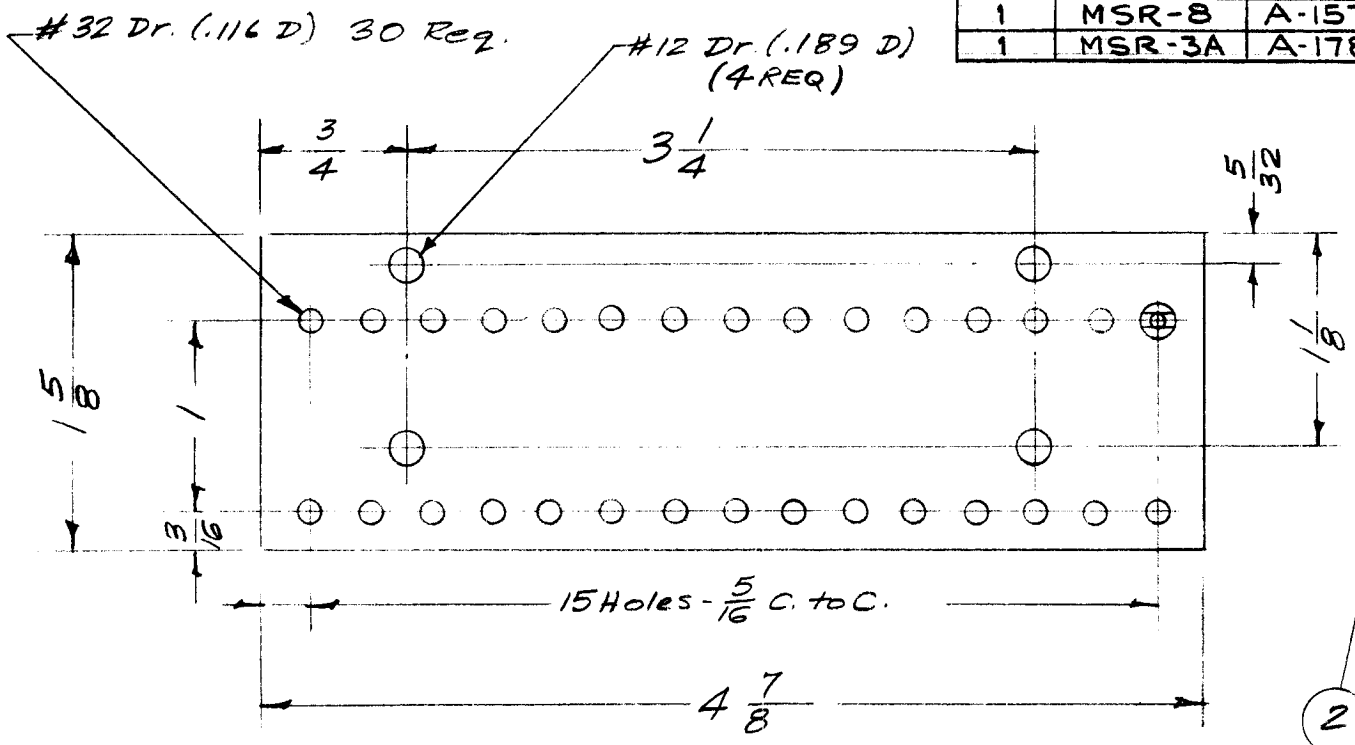
REQ. ITEM	PART NO.	DESCRIPTION	SYMBOL
		THE TECHNICAL MATERIEL CORP. MAMARONECK. NEW YORK	
		AM-108 ASSY (CAPACITOR, VAR, VAC W/GEAR)	
		(C113)	
		STOCK SIZE	
		MATERIAL	
		TYPE & TEMPER	
		HEAT TREAT. SPEC.	
		FINISH & SPEC. NO.	
		DRAWN	
		CHECKED	
		FINAL APPROVAL	
		ELEC. DES. APP.	
		MECH. DES. APP.	

A-1569 A



REQ. PER UNIT	USED ON		
	MODEL	ASS'Y. NO.	DATE
1	MSR-4	A-1576	8-26-58
1	MSR-5	A-1576	7-1-60
1	MSR-8	A-1576	
1	MSR-3A	A-1789	

A-1573 A



SEE NOTE.

**NOTE:**  
 BOARD MUST BE MARKED  
 BEFORE ASSEMBLING ITEMS 2 & 3  
 AS FOLLOWS:  
 FOR MSR-3A, PER A1789  
 FOR MSR-4,5,8, PER A1576

4	3	TE-108-8	Standoff, Rivet Type
30	2	TE-109-3	Terminal Lug
1	1	PX-416	Term. Board No. 4 (N.D.)

A	2	MODELS: MSR-8-3A AND NOTE ADD. "SEE NOTE" ADD.	11.9.64	12840	hpb	@	
-	1	NEW BOARD AS PER CN NO 437	8/28/58	437	6		

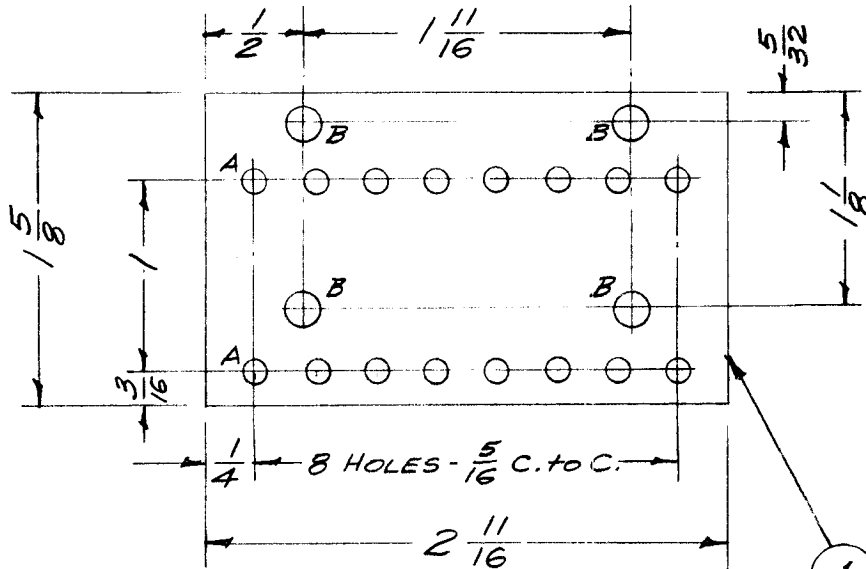
REQ. ITEM	PART NO.	DESCRIPTION	SYMBOL
1/8 THK.		THE TECHNICAL MATERIEL CORP.	
STOCK SIZE		MAMARONECK, NEW YORK	
Phenolic		TERMINAL BOARD NO. 4	
MATERIAL		MECH. ASSEMBLY	
XXXXP		16/26/58	
TYPE & TEMPER	HEAT TREAT. SPEC.	DRAWN	CHECKED
		P.P.K.	
FINISH & SPEC. NO.		ELEC. DES. APP.	MECH. DES. APP.

ISSUE	ITEM	CHANGED FROM	DATE	CH. NO.	DRAFTS	CHECKER	ENG. APP.
TOLERANCES			SCALE: FULL				
DEC. DIM. ±			MAXIMUM ALLOWABLE TOLERANCES HAVE BEEN DETERMINED AND ANY DEVIATIONS WILL BE CAUSE FOR REJECTION.				
FRAC. DIM. ± 1/64			REMOVE ALL BURRS AND SHARP EDGES				
ANGULAR DIM. ±							

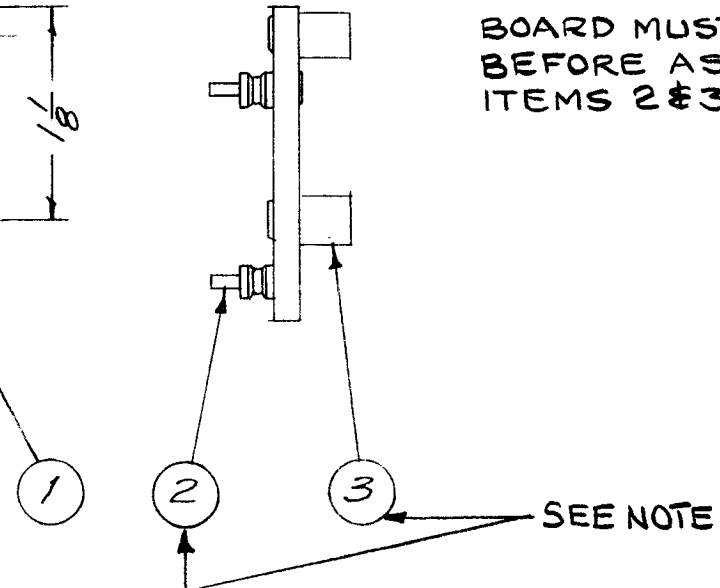
A-1573 A

REQ. PER UNIT	USED ON		
	MODEL	ASS'Y. NO.	DATE
1	MSR-4	A-1577	8-26-58
1	MSR-5	A-1577	7-1-60
1	MSR-3A	A-1577	
1	MSR-6	A-1577	
1	MSR-8	A-1577	

A-1574 A



NOTE:  
BOARD MUST BE MARKED  
BEFORE ASSEMBLING  
ITEMS 2 & 3 PER A1577



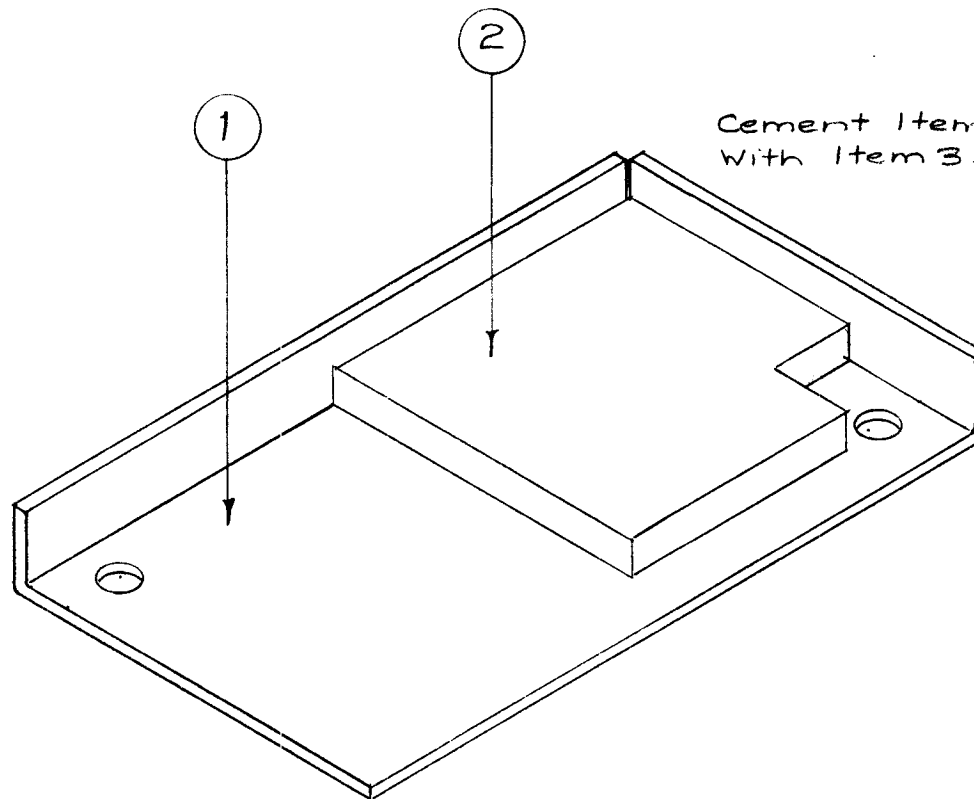
- A- #32 Dr. (.116 Dia) 16 Req.
- B- #12 Dr (.189 Dia) 4 Req.

4	3	TE-108-3	Standoff, Rivet Type	
16	2	TE-109-3	Terminal Lug	
1	1	PX-417	Terminal Board No. 5 (N.D.)	

ISSUE	ITEM	CHANGED FROM	DATE	CH. NO.	DRAFTS	CHECKER	ENG. APP.
A	2	MODELS: MSR-3A, -6, -8 ADDED NOTE ADD, 'SEE NOTE' ADDED	11.9.64	12840	lbs		
-	1	NEW BOARD AS PER CN. ND. 437	8/28/58	437	16		
TOLERANCES							
SCALE: FULL							
DEC. DIM. ± FRAC. DIM. ±1/64 ANGULAR DIM. ±							
MAXIMUM ALLOWABLE TOLERANCES HAVE BEEN DETERMINED AND ANY DEVIATIONS WILL BE CAUSE FOR REJECTION. REMOVE ALL BURRS AND SHARP EDGES							

REQ. ITEM	PART NO.	DESCRIPTION	SYMBOL
1/8 THK.			
STOCK SIZE			
Phenolic			
MATERIAL			
XXXXP			
TYPE & TEMPER		HEAT TREAT. SPEC.	
FINISH & SPEC. NO.		ELEC. DES. APP.	MECH. DES. APP.
		DRAWN	CHECKED
		FINAL APPROVAL	
		A-1574 A	

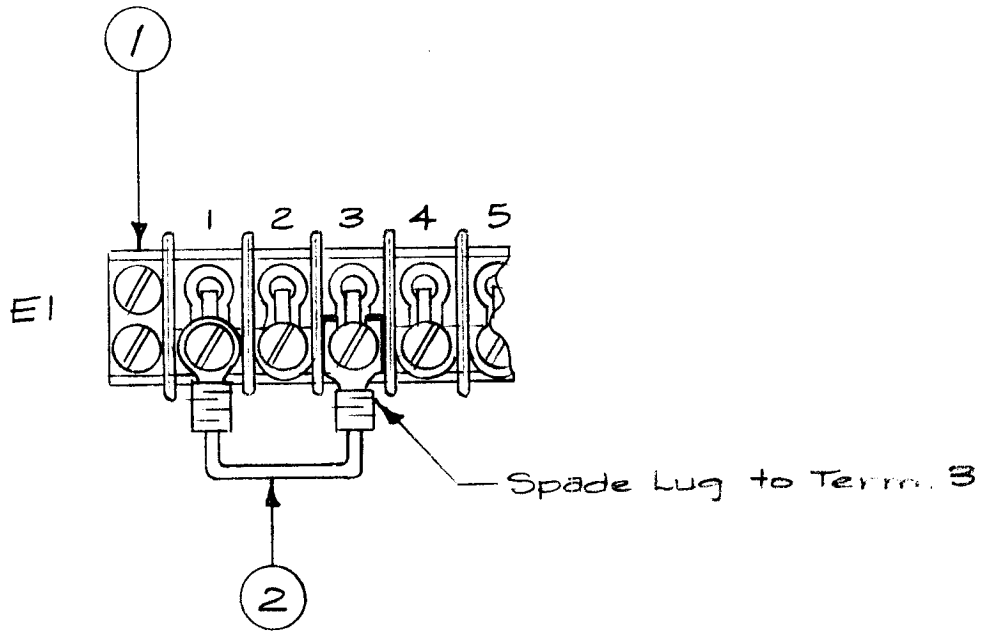
REQ. PER UNIT	USED ON			A-1581
	MODEL	ASS'Y. NO.	DATE	
1	MSR-4		9-16-58	



Cement Item 2 to Item 1  
With Item 3.

X	3	GL-101-1	Cement, Pliobond	
1	2	RY-126	Cushion, Capacitor	
1	1	MS-1331	Cover, Capacitor	
REQ. ITEM	PART NO.		DESCRIPTION	SYMBOL
STOCK SIZE			THE TECHNICAL MATERIEL CORP. MAMARONECK. NEW YORK	
MATERIAL			CAPACITOR COVER & CUSHION ASS'Y.	
TOLERANCES		SCALE:		
DEC. DIM. ±		MAXIMUM ALLOWABLE TOLERANCES HAVE BEEN DETERMINED AND ANY DEVIATIONS WILL BE CAUSE FOR REJECTION.		
FRAC. DIM. ±		REMOVE ALL BURRS AND SHARP EDGES		
ANGULAR DIM. ±				
TYPE & TEMPER		HEAT TREAT. SPEC.	DRAWN	CHECKED
FINISH & SPEC. NO.		ELEC. DES. APP.	MECH. DES. APP.	A-1581

REQ. PER UNIT	USED ON			A-1582
	MODEL	ASS'Y. NO.	DATE	
1	MSR-3			
1	MSR-4			

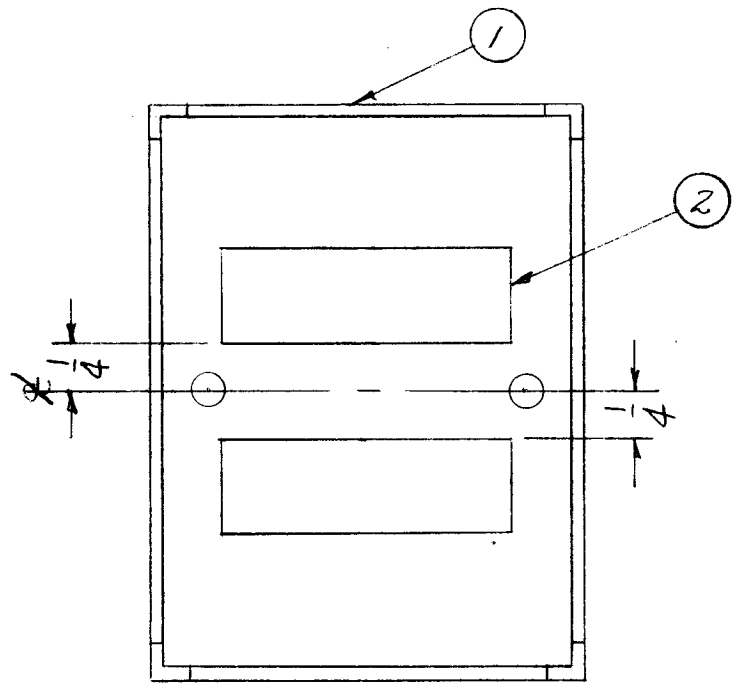


1	2	CA-390-4-3.0	Cable Ass'y., Jumper	
1	1	TM-100-12	Terminal Strip	
REQ. ITEM	PART NO.		DESCRIPTION	SYMBOL
STOCK SIZE			THE TECHNICAL MATERIEL CORP. MAMARONECK. NEW YORK	
MATERIAL			E1 Jumper Connection Ass'y.	
TYPE & TEMPER		HEAT TREAT. SPEC.	DRAWN	CHECKED
FINISH & SPEC. NO.		ELEC. DES. APP.	MECH. DES. APP.	FINAL APPROVAL
			16 <sup>9</sup> /27/58	gpr
				A-158.2

ISSUE	ITEM	CHANGED FROM	DATE	CH. NO.	DRAFTS	CHECKER	ENG. APP.
TOLERANCES			SCALE:				
DEC. DIM. ±			MAXIMUM ALLOWABLE TOLERANCES HAVE BEEN DETERMINED AND ANY DEVIATIONS WILL BE CAUSE FOR REJECTION.				
FRAC. DIM. ±			REMOVE ALL BURRS AND SHARP EDGES				
ANGULAR DIM. ±							

REQ. PER UNIT	USED ON		
	MODEL	ASS'Y. NO.	DATE
1	S-394	ATS-MCU MOD KIT	
1	ATSMCU-2		6-8-59

A-1583



2	2	RY-121-8-3-1.5	STRIP, SPONGE RUBBER	
1	1	MS-1336	TOP HAT, RELAY CLAMP	
REQ. ITEM	PART NO.		DESCRIPTION	SYMBOL
STOCK SIZE			THE TECHNICAL MATERIEL CORP. MAMARONECK. NEW YORK	
MATERIAL			TOP HAT ASS'Y. PROTECTIVE CIRCUIT KIT S-394	
TOLERANCES		SCALE: <i>CR</i>	9/11/53 <i>awc</i>	<i>AW</i> <i>JLR</i>
DEC. DIM. ±		MAXIMUM ALLOWABLE TOLERANCES HAVE BEEN DETERMINED AND ANY DEVIATIONS WILL BE CAUSE FOR REJECTION.		
FRAC. DIM. ±		REMOVE ALL BURRS AND SHARP EDGES		
ANGULAR DIM. ±		FINISH & SPEC. NO.		ELEC. DES. APP. MECH. DES. APP.
1/64				A-1583