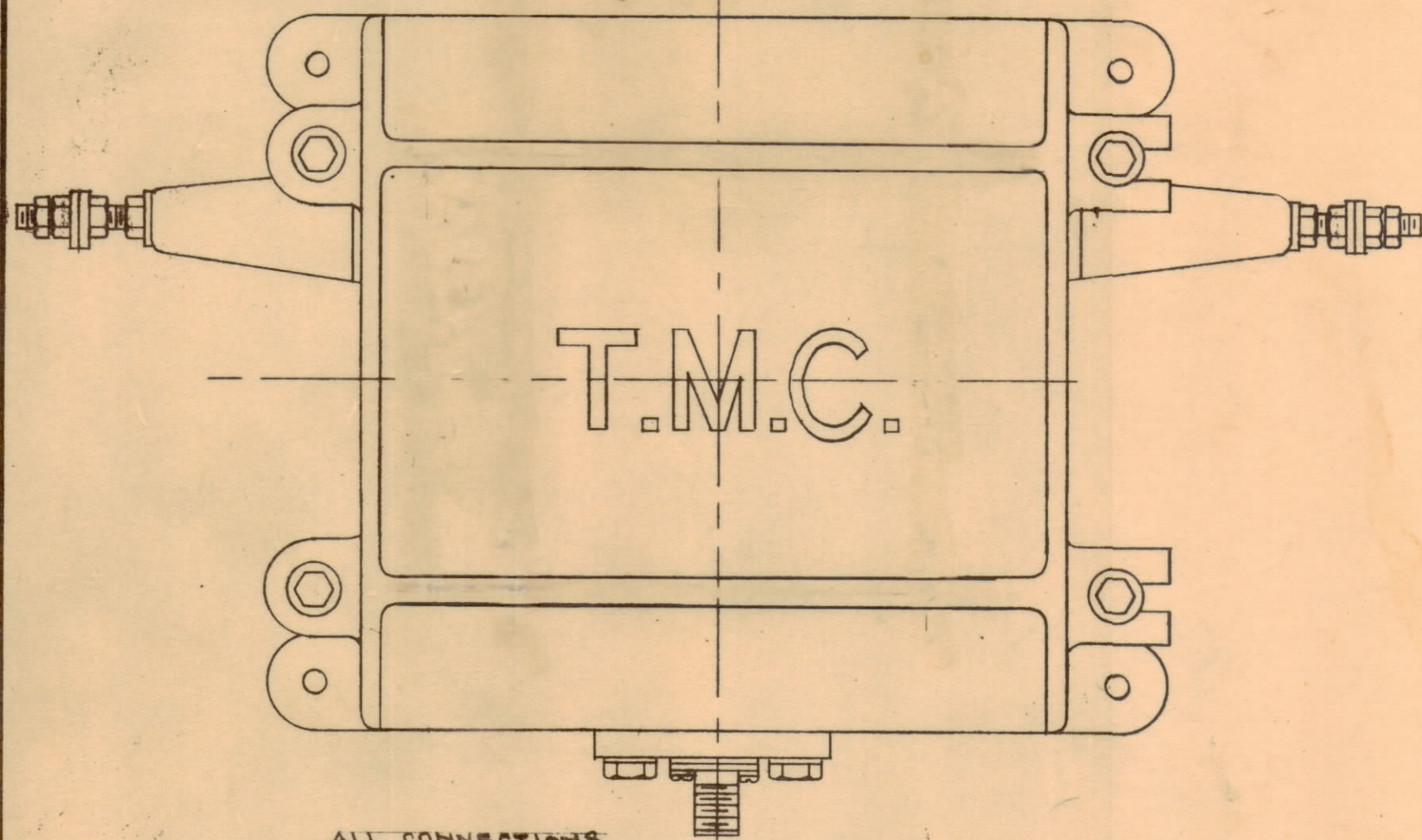


IF IT IS FOUND DESIRABLE TO CHANGE ANY TOLERANCE OR OTHER DETAIL SPECIFIED ON THIS DRAWING NOTIFY THE PURCHASER PROMPTLY.

MAXIMUM ALLOWABLE TOLERANCES HAVE BEEN DETERMINED AND DEVIATIONS WILL BE CAUSE FOR REJECTION. REMOVE ALL BURRS AND SHARP EDGES



ALL CONNECTIONS

ADJUST SPARK GAP TO  $\frac{1}{16}$  SPACING

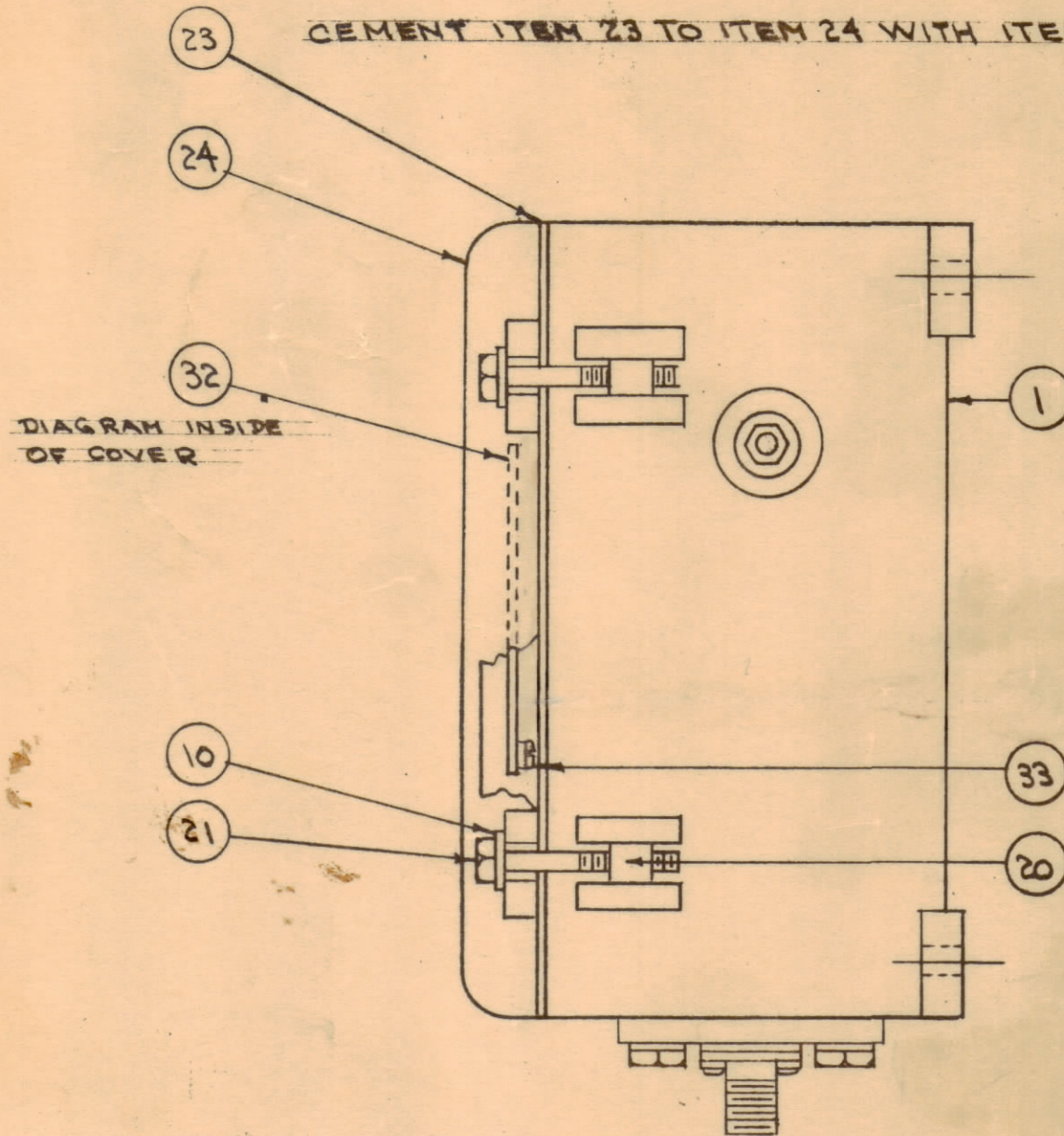
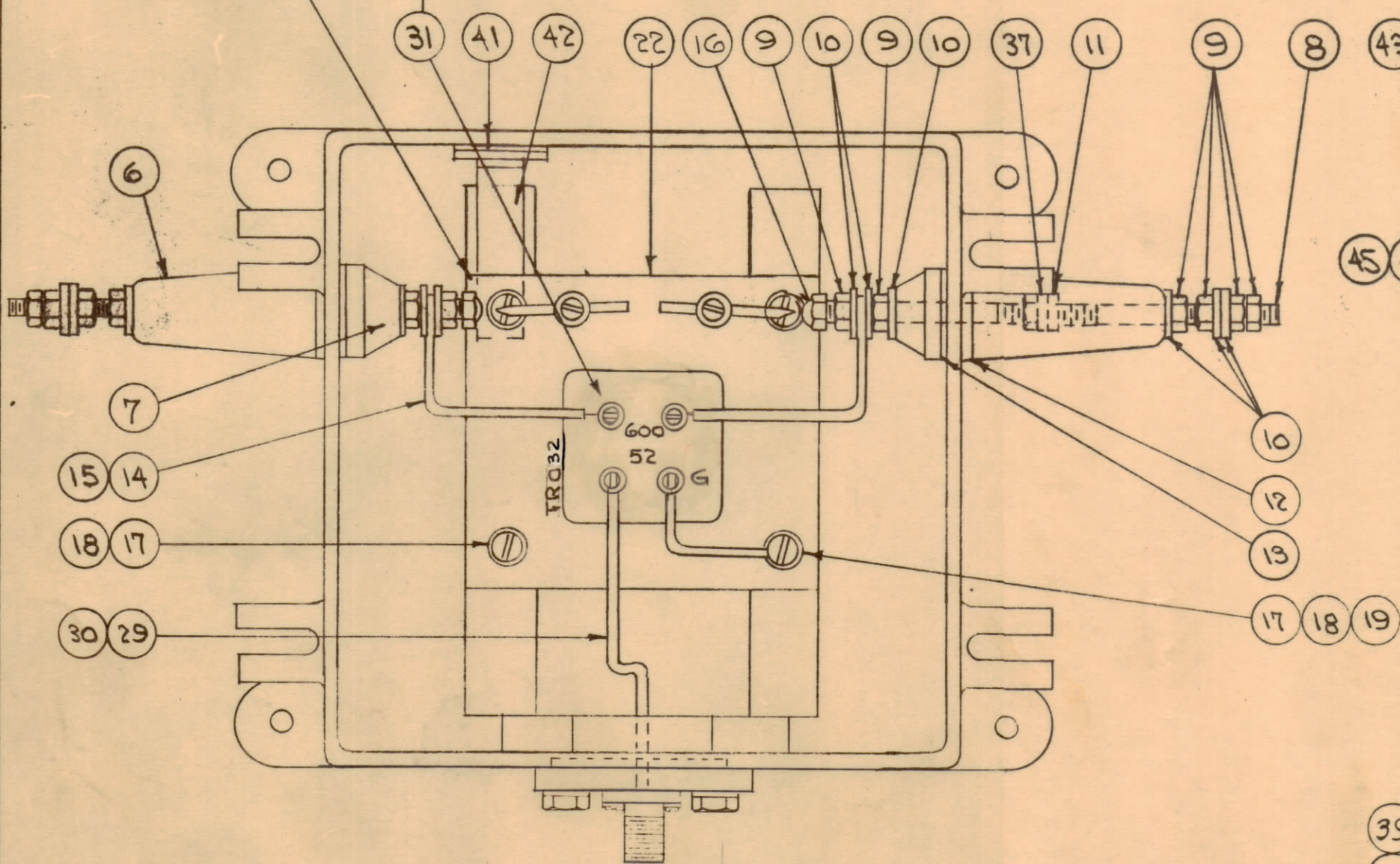
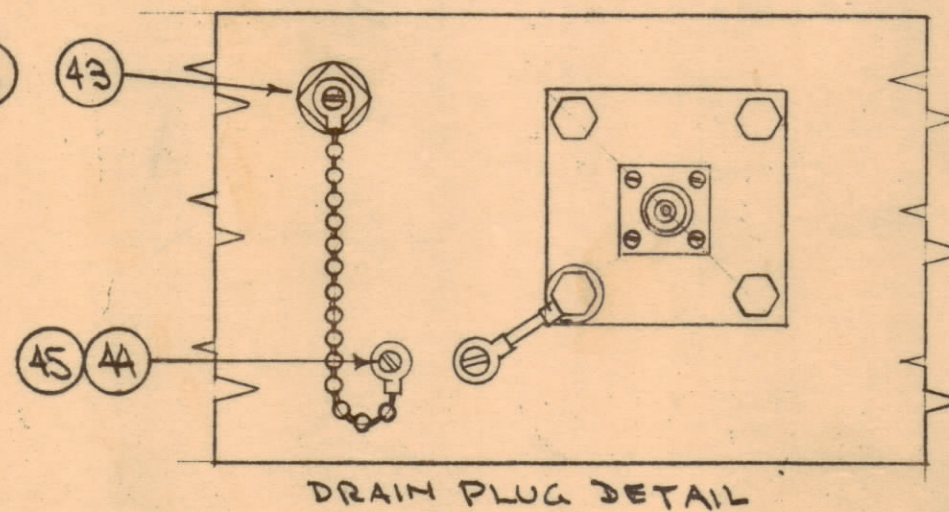
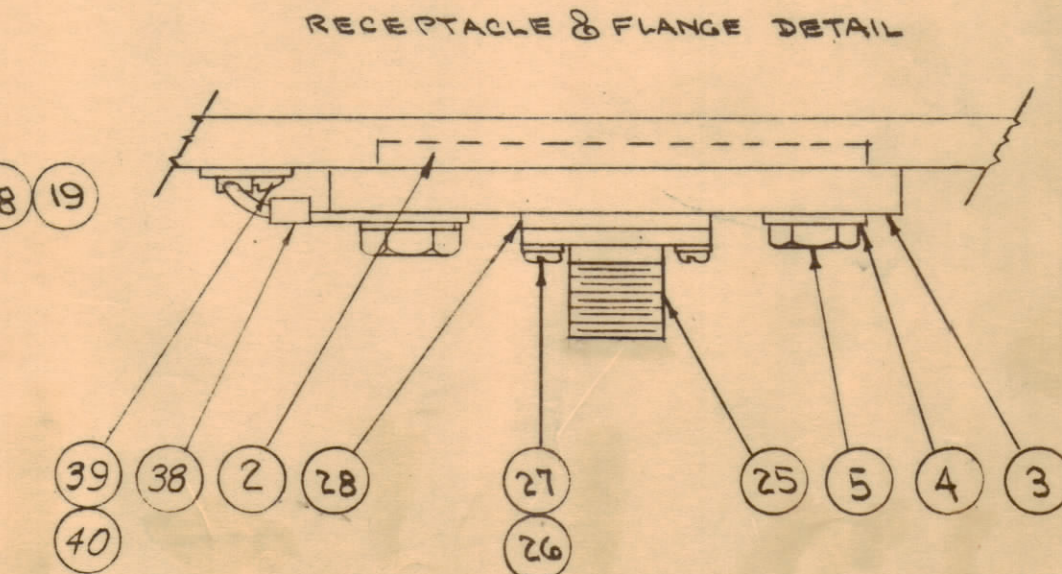


DIAGRAM INSIDE OF COVER

NOTE: ITEM 36 IS SUPPLIED AS A LOOSE ITEM, INSIDE CASE.



DRAIN PLUG DETAIL



RECEPTACLE & FLANGE DETAIL

1	45	LW00HSS	WASHER, LOCK
1	44	SCRS0632SS3	SCREW, MACHINE
1	43	A-1291	DRAIN PLUG ASSY
1	42	MS-933	HOLDER, DESSICANT
2	41	AD-101-1/6	DESSICANT
1	40	SCBS1032SS4	SCREW, MACHINE
7	39	LW010MSS	LOCKWASHER
1	38	A-1164	GROUND STRAP, CASE
2	37	FW25LBC	WASHER, FLAT
1	36	UG-21B/U	PLUG (LOOSE ITEM INSIDE)
	35	DELETED	
X	34	GL-101-2	CEMENT, PLOGOND
4	33	SC-102-1	SCREW, THD. CUTTING
1	32	LD-380	SCHEMATIC DIAGRAM
X	31	BS-100	SOLDER, SOFT
8"	30	PX-104-1.066	INSULATION, SLEEVING
9"	29	WL-100-3	WIRE, BUSS BAR
1	28	GA-149-4	GASKET
4	27	LWS04MSS	WASHER, LOCK
4	26	SCBS0405SS	SCREW, MACHINE
1	25	UG-58A/U	RECEPTACLE
1	24	PM-105	COVER
1	23	GA-103	GASKET, COVER
1	22	A-482-2	TRANSFORMER, SUB ASSY.

A-1496 C

4	21	SC-108-9	BOLT, HEX
4	20	PM-100	PIN, COVER BOLT
1	19	FW08MBC	WASHER, FLAT
4	18	LW08MRC	WASHER, LOCK
4	17	SCBS0832BC6	SCREW, MACHINE
2	16	HTC2520BCL	NUT, CAP
4"	15	PX-104-1.066	INSULATION, SLEEVING
6"	14	WL-100-3	WIRE, BUSS BAR
2	13	GA-101	GASKET
2	12	GA-100	"
2	11	GA-104	"
20	10	FW25MSS	WASHER, FLAT
12	9	NTH2520SS14	NUT, HEX
2	8	A-100	STUD, SUB ASSY.
2	7	NS-101	INSULATOR, INSIDE
2	6	NS-100	" , OUTSIDE
4	5	SC-108-4	BOLT, HEX
4	4	LWS25MSS	WASHER, LOCK
1	3	PM-119	FLANGE
1	2	GA-102	GASKET
1	1	PM-106	CASE

REQ. ITEM	PART NO.	DESCRIPTION	SYMBOL
THE TECHNICAL MATERIEL CORP. MAMARONECK, NEW YORK			
STOCK SIZE			
CASE & COVER ASSEMBLY			
MATERIAL			
WEIGHT PER PC.			
TYPE & TEMPER			
HEAT TREAT. SPEC.			
FINISH & SPEC. NO.			

DRAWN: *dm* 3/21/58  
 ELEC. DES. APP. *dm*  
 MECH. DES. APP. *dm*  
 CHECKED: *RRB*  
 FINAL APPROVAL: *RRB*  
**A-1496 C**

C	ITEM(22) WAS A-482	3-12-53	8518	<i>dm</i>	<i>dm</i>	<i>dm</i>
B	SYM. TR032 WAS TR090	2-25-63	8312	<i>dm</i>	<i>dm</i>	<i>dm</i>
A	ITEM 27 WAS LWS04MRC, 26 WAS SCBS0440BNS ITEM 35 DELETED WAS PX-15, 28 WAS GA-111 ITEM 40 WAS SCBS1032BC4, 39 WAS LW010MRC ITEM 45 WAS LW00HSS, 44 WAS SCBS0632SS3	8-20-62	70%	<i>dm</i>	<i>dm</i>	<i>dm</i>
ISSUE	CHANGED FROM	DATE	CN. NO.	DRAFTS	CHECKER	ENG. APP.
TOLERANCES		SCALE:				
ALL OTHERS	DEC. DIM. ± FRAC. DIM. ± ANGULAR DIM. ±	DRILL, PUNCH, COMMERCIAL STOCK SIZES AND MANUFACTURERS TOLERANCES ARE NOT INCLUDED.				

<b>RAC-24</b>		3-21-58	
MODEL	PROJECT NO.	ASSY. NO.	DATE
USED ON			