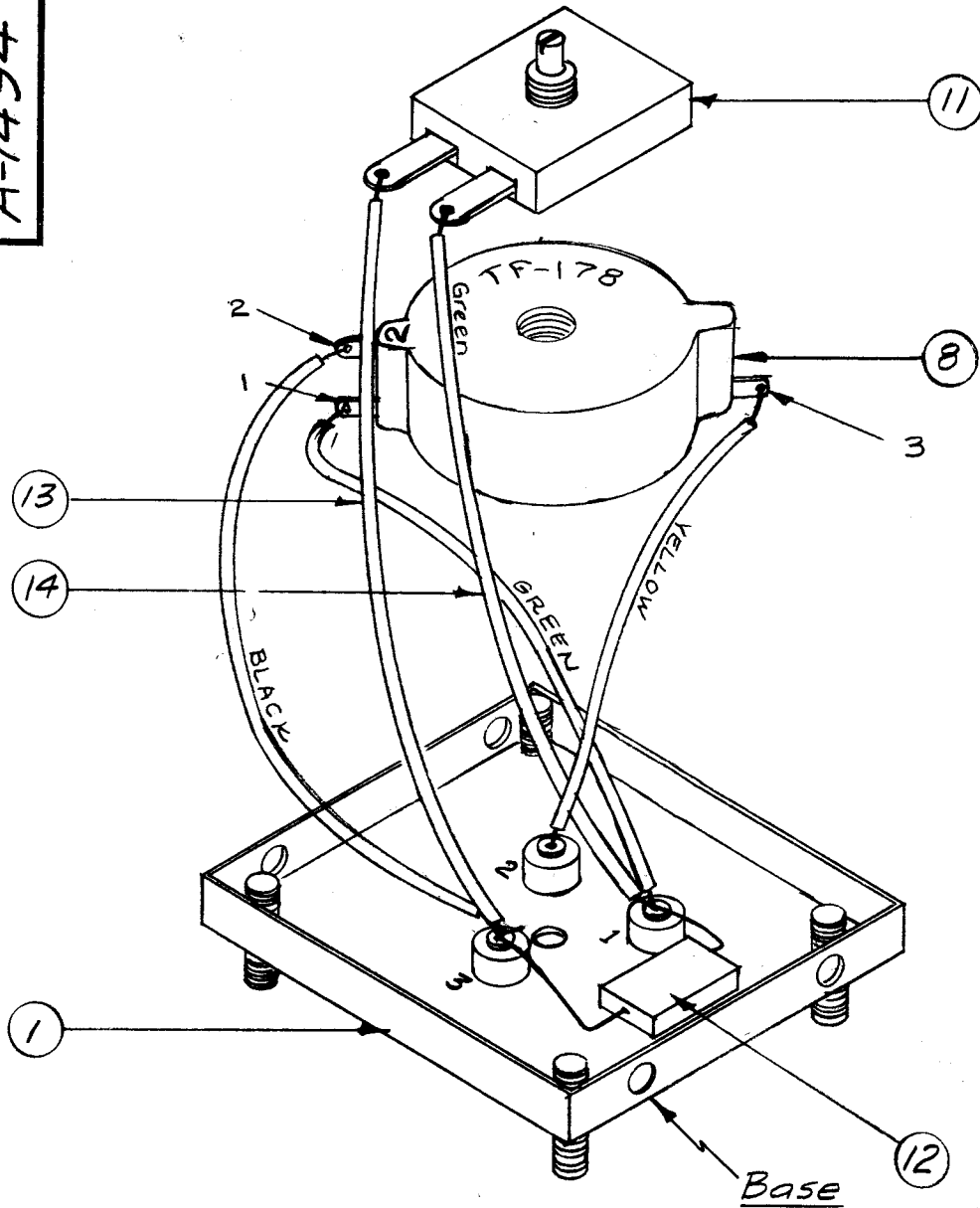
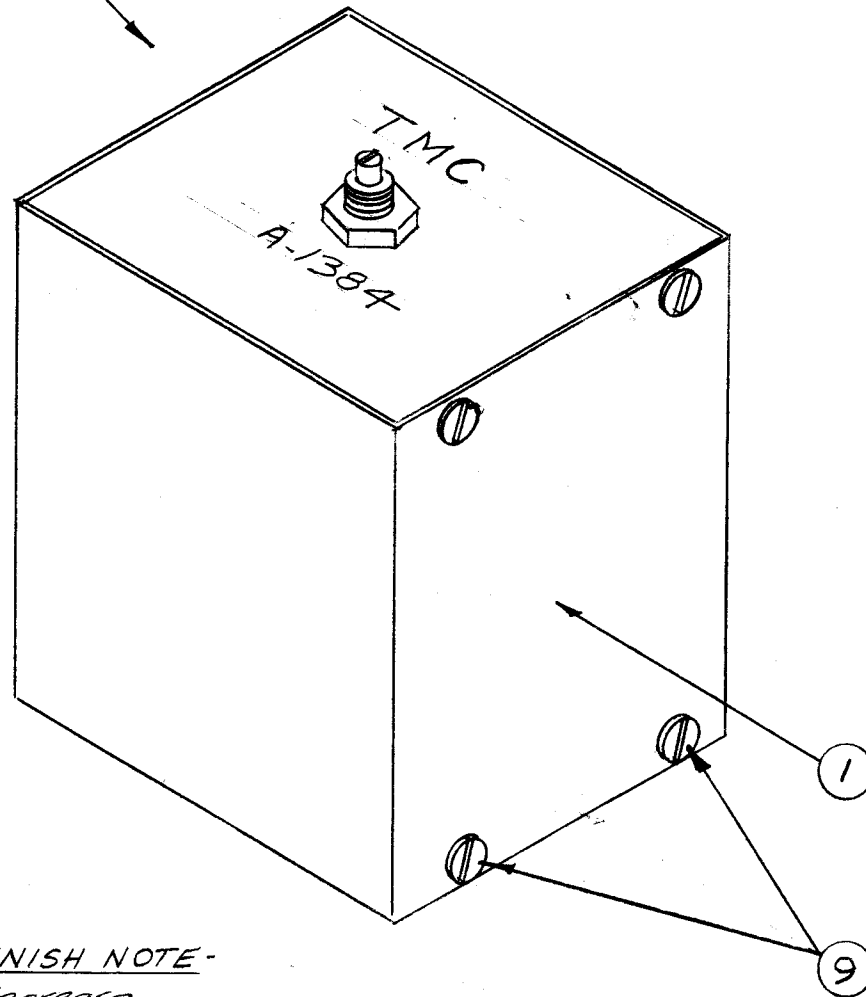


F
A-1494

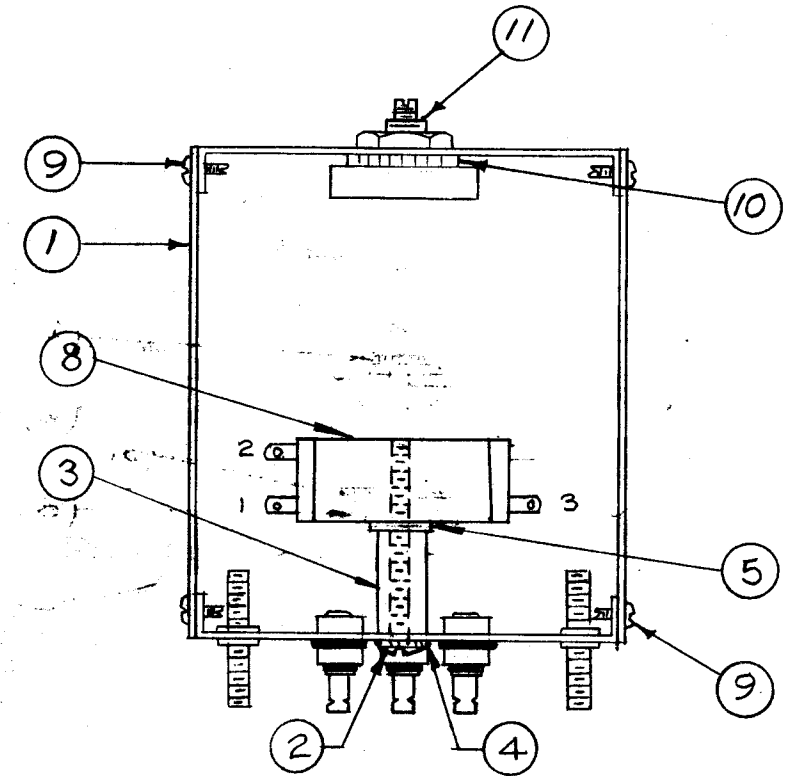
See Detail "A" for Mounting



Stamp as shown - 1/8" high Black Gothic (after painting)

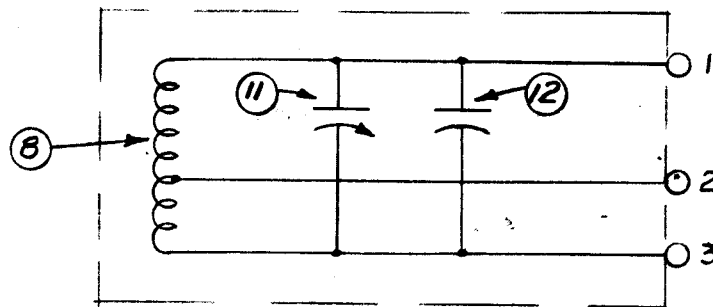


FINISH NOTE -
 Degrease
 S114 Zinc Chromate Primer
 S115 Smooth Grey Enamel
 Point all outside surfaces except base.



X	17	MWC22(7)U4	CABLE, INSULATED	YELLOW
	16		DELETED	
X	15	BS-100	Solder, Soft	
	14	MWC22(7)U5	Cable, Insulated (size 22)	Grn.
	13	MWC22(7)U0	" " " "	Blk.
	12	CM20D821G	Capacitor, Fixed, Mica	
	11	CV-100-306	Capacitor, Variable (275-970)	
	10	LWE12MRN	Lockwasher, Ext.	
	9	SF804405N4	Screw, Thd. Cutting	
	8	TF-178	Transformer, A.F.	
	7		DELETED	
	6		DELETED	
	5	FWO8LBN	Washer, Flat	
	4	LWE06MRN	Lockwasher, Ext.	
	3	TE-117-3	Spacer	
	2	SCBS0632BN18	Screw, Machine	
	1	BX-149	Case & Covers	

REQ. ITEM	PART NO.	DESCRIPTION	SYMBOL
//			
STOCK SIZE			
//			
MATERIAL			
//			
//			
		THE TECHNICAL MATERIEL CORP. MAMARONECK, NEW YORK	
		A-1384 MAIN ASSY (Side Tone Gen. Network)	
		163-1-57	AJS
TYPE & TEMPER		HEAT TREAT. SPEC.	DRAWN
See Finish Note			P.L.K.
FINISH & SPEC. NO.		ELEC. DES. APP.	MECH. DES. APP.
		A-1494	



Schematic

ISSUE	ITEM	CHANGED FROM	DATE	CH. NO.	DRAFTS	CHECKER	ENG. APP.
F	3	ITEMS 6, 7, 16 DELETED	8/2/58	2644	CU	JCB	
	2	ITEM 8 WAS A-1383					
	1	PICTORIAL CHART TO ACCOM. TF 178					
E	1	ITEM 12 WAS CM20D821G	9/30/58	461	10	P.L.K.	J.R.
D	1	ITEM 11 WAS CV-100-304	9/3/58	447	16	P.L.K.	J.R.
C	1	ITEM 9 QUANT. INCR. FROM 4 TO 8	3/8/58	3	16	P.L.K.	J.R.
B	1	DWG. NO. WAS A-1384 A-1384 IS NOW THE CURT. DWG.	11/3/58	2	16	J.H.D.	P.L.K. AJS
A	1	Item 16 Added	10/15/57	1	16	J.H.D.	P.L.K.

TOLERANCES		SCALE:
DEC. DIM. ±		1 A-1384
FRAC. DIM. ±		
ANGULAR DIM. ±		
MAXIMUM ALLOWABLE TOLERANCES HAVE BEEN DETERMINED AND ANY DEVIATIONS WILL BE CAUSE FOR REJECTION. REMOVE ALL BURRS AND SHARP EDGES		

REQ. PER UNIT	MODEL	PROJECT NO.	SYMBOL NO.	DATE
1	A-1384			5-1-58
USED ON				