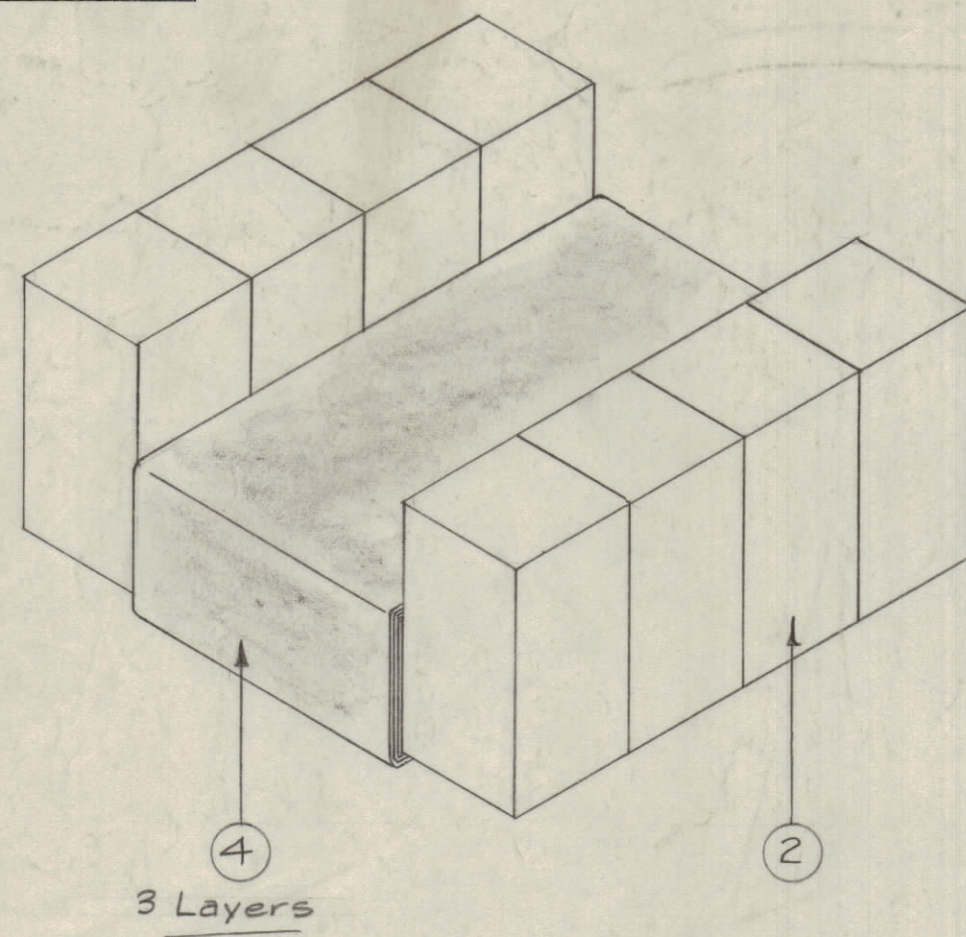
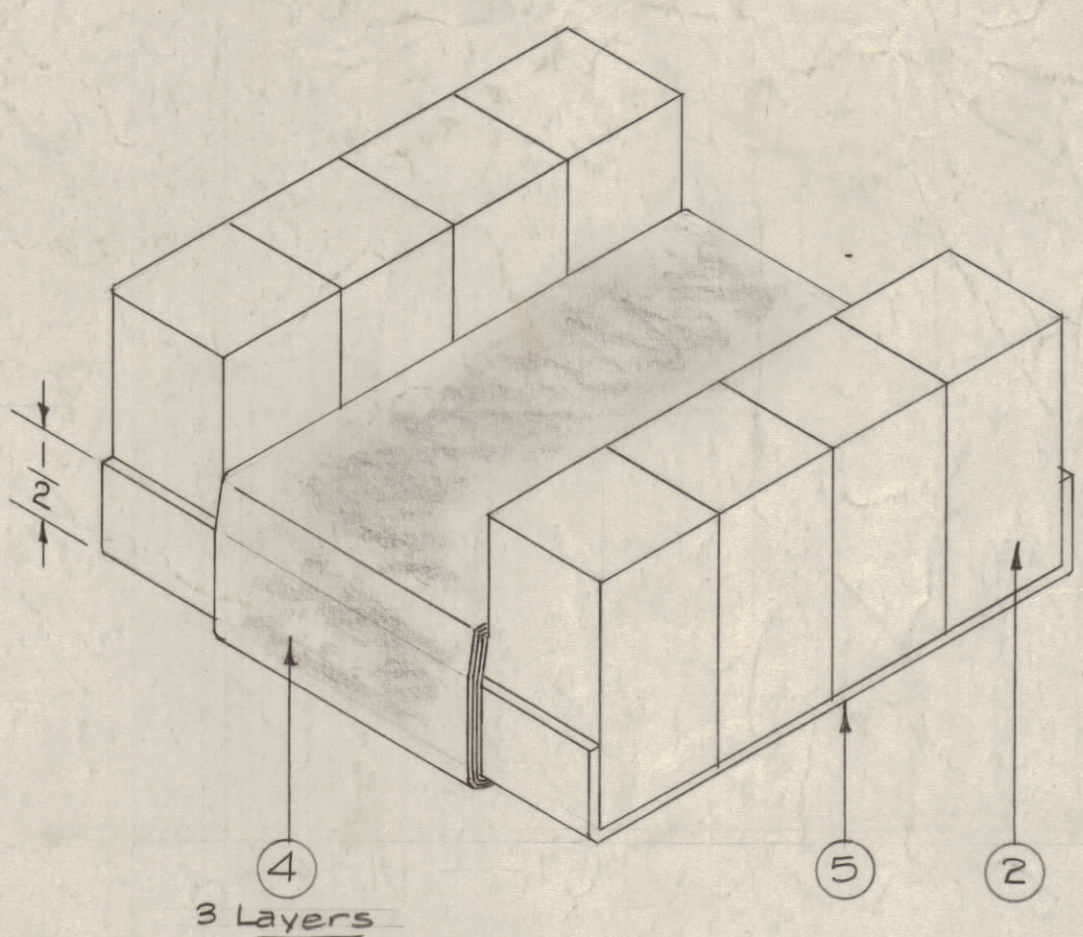


IF IT IS FOUND DESIRABLE TO CHANGE ANY TOLERANCE OR OTHER DETAIL SPECIFIED ON THIS DRAWING NOTIFY THE PURCHASER PROMPTLY.  
 MAXIMUM ALLOWABLE TOLERANCES HAVE BEEN DETERMINED AND DEVIATIONS WILL BE CAUSE FOR REJECTION. REMOVE ALL BURRS AND SHARP EDGES



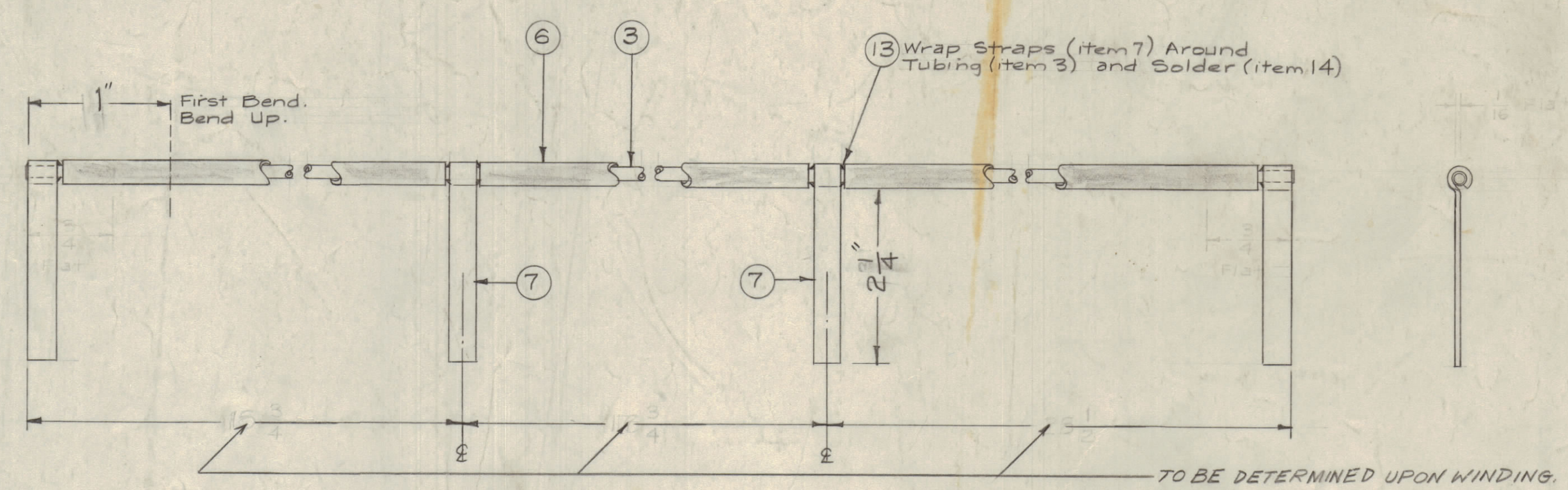
3 Layers

PART I  
(1 Req.)

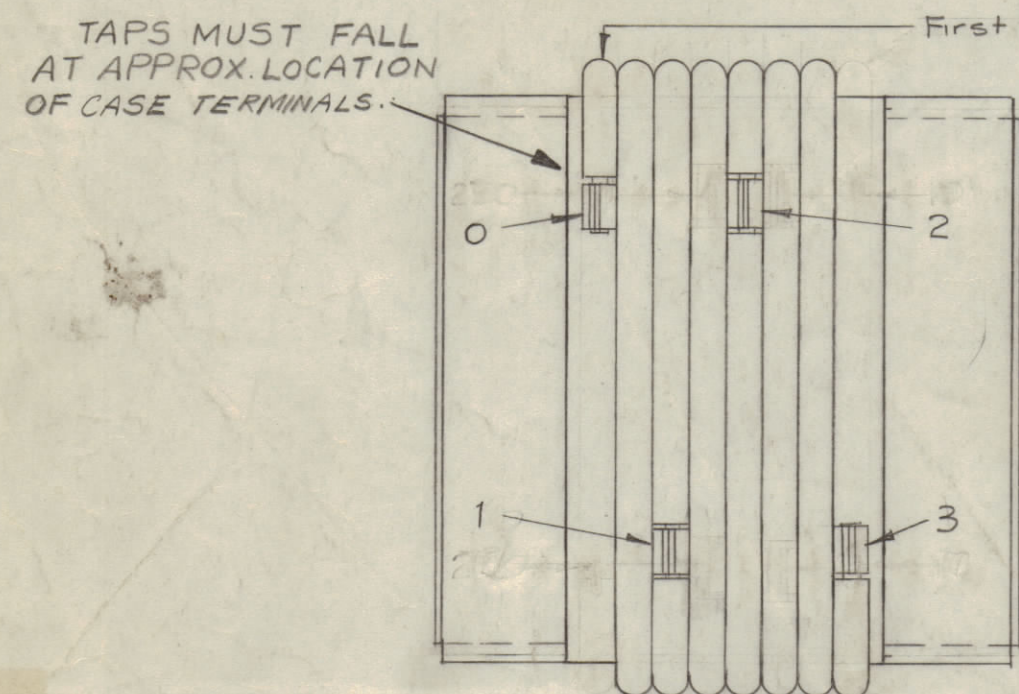
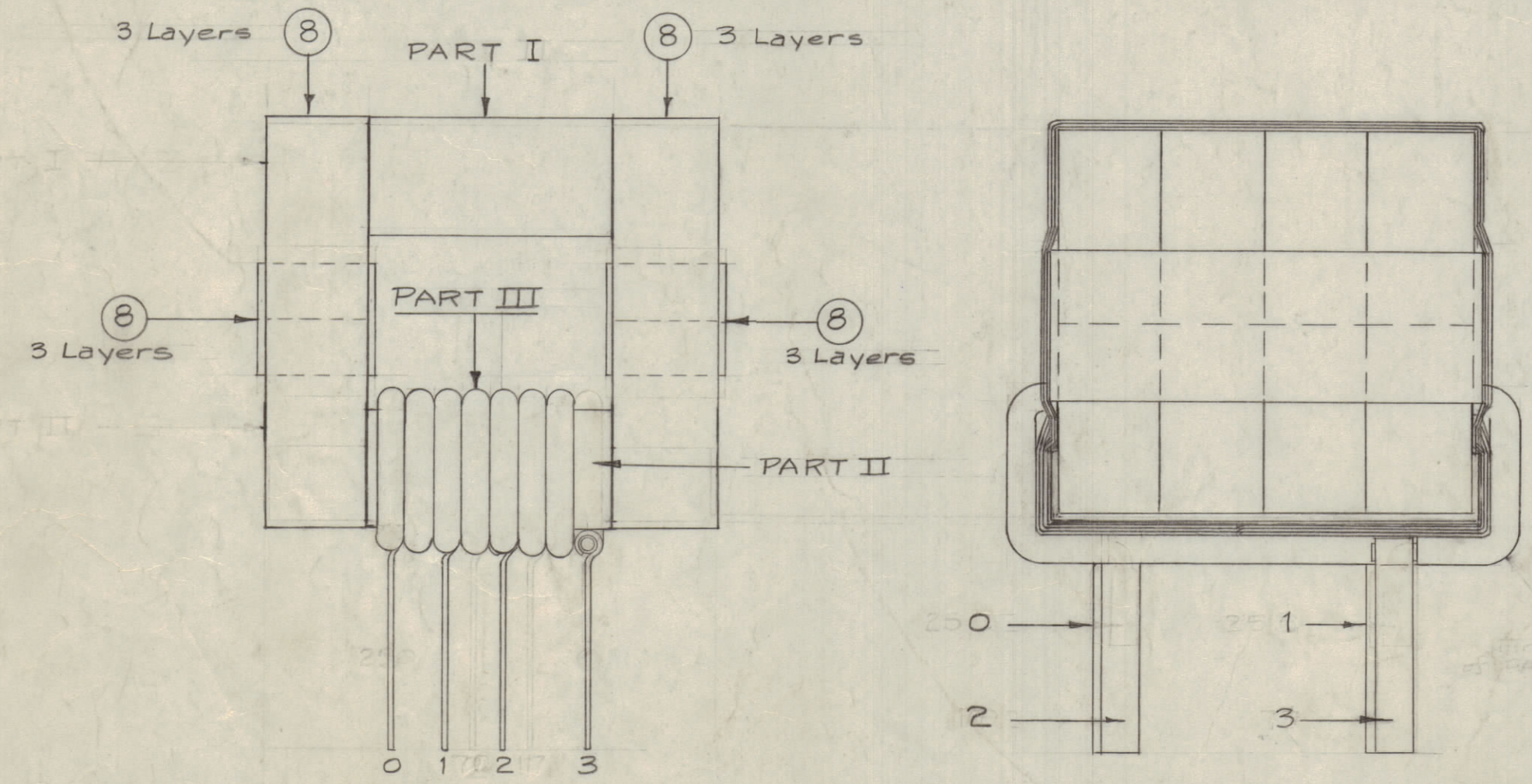


3 Layers

PART II  
(1 Req.)



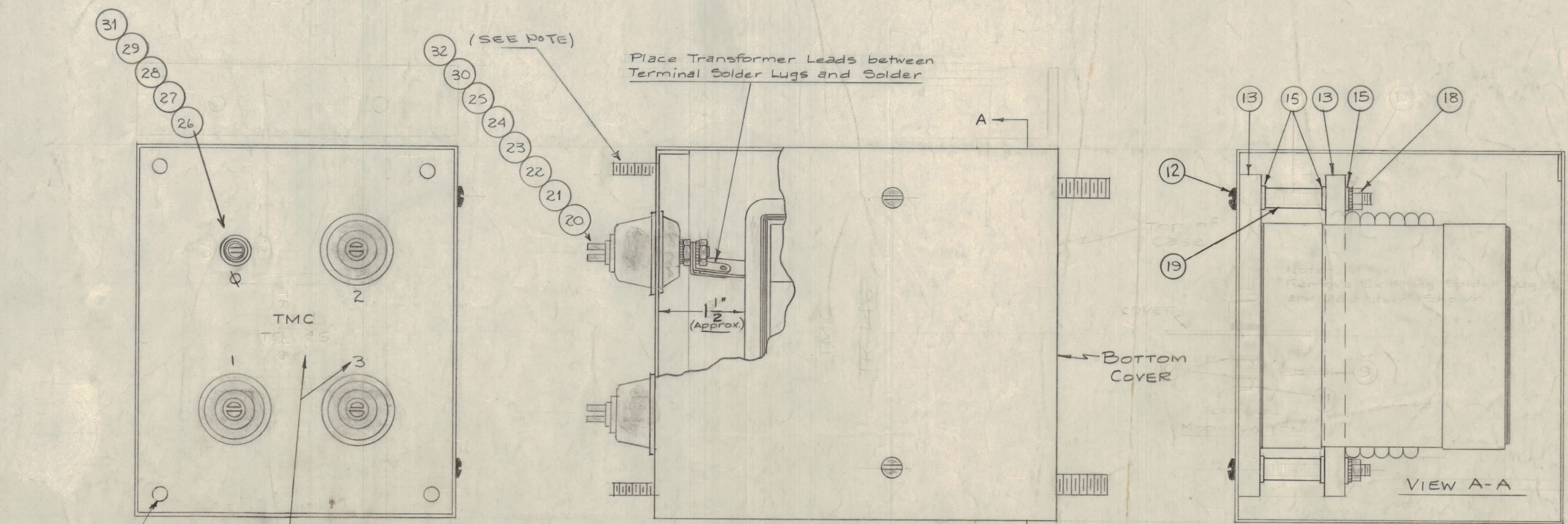
PART III  
(1 Req.)



NOTE -  
 1. Wind PART III (Tubing) on PART II as shown BEFORE taping PART I to PART II.

- 0 - 6 3/4" (Terminal 3)
- 1 - 4" (Terminal 2)
- 2 - 1 3/4" (Terminal 1)
- 3 - 0 (Terminal 0)

WINDING DATA



PROCEDURE -  
 1. Modify Terminals as shown in detail below.  
 2. Solder Transformer to Cover Terminals as shown.  
 3. Insert one Mounting Plate (item 13) into Transformer Slot and place Top Cover & Transformer Assy. into Case. (Leave 1/2" Spacing)  
 4. Solder Top Cover to Case. (Solder all around Seam)  
 5. Insert second Mounting Plate into Case as shown in View "A-A", and Assemble Hardware.  
 \* 6. Insert Bottom Cover and solder all around Seam.  
 7. FINISH - S101 Caustic Dip  
 S114 Zinc Chromate Primer } Except Terminals & Stud  
 S115 Smooth Grey Enamel }  
 8. Stamp Top as Shown. (SEE CHART)  
 9. TEST AS PER TMC S-368

NOTE - THESE MOUNTING STUDS ARE ON BX-181 ONLY  
 Stamp TMC PART No 1/8 High Black Gothic (SEE CHART)

\* BOTTOM & TOP COVERS MUST BE FLUSH WITH MAIN BODY OF CASE

ISSUE	ITEM	CHANGED FROM	DATE	CN. NO.	DRAFTS	CHECKER	ENG. APP.
N							
M							
L							
K							
J							
I							

NOTICE TO PERSONS RECEIVING THIS DRAWING

THE TECHNICAL MATERIEL CORPORATION claims proprietary right in the material disclosed hereon. This drawing is issued in confidence for engineering information only and may not be so released or used to manufacture any item without the written permission from THE TECHNICAL MATERIEL CORPORATION to the user. This drawing is loaned for mutual assistance and is subject to recall at any time.

Property of:  
 THE TECHNICAL MATERIEL CORPORATION  
 MAMARONECK, NEW YORK

REQ	ITEM	PART NO.	DESCRIPTION	SYMB
	6	32	NTH024BNC12 NUT, HEX.	
	2	31	NTH0632BNC NUT, HEX.	
	3	30	LWE10MRC LOCK WASHER, EXT	
	2	29	LWE06MRC LOCK WASHER, EXT.	
	2	28	TE117-11 SPACER	
	2	27	TE113-149 TERM., LUG	
	1	26	TE188-5 TERM., BUSH	
	3	25	TE188-9 TERM., BUSH	
	3	24	GA150-6 GASKET	
	6	23	GA138-6 GASKET	
	6	22	TE104-4 TERM. LUG	
	2	21	NS112-2 INSUL	
	3	20	NS112-1 INSUL	

MODEL	MFG. ASSY	STAMPING (TMC PART NO)	CASE & COVER (ITEM ONE)
TR-146	A-1492-1	TR-146	BX-166
TR-151	A-1492-2	TR-151	BX-181

REQ	MODEL	PROJECT NO.	ASSY. NO.	DATE
1	TR-151	ATS-50(10)TU-2		6-16-59
1	TR-146	ATS-50(10)TU		12-30-57

NOT TO BE RELEASED  
 W/O AUTHORIZATION  
 AUTH. BY: \_\_\_\_\_  
 DATE: \_\_\_\_\_

REQ	ITEM	PART NO.	DESCRIPTION	SYMBOL
6	19	TE117-7B	SPACER	
6	18	SM127D832	NUT, HEX, SELF-LOCKING	
	17		DELETED	
	16		DELETED	
6	15	FW08HBN	Washer, Flat	
X	14	BS-100	Solder, Soft	
2	13	PX-400	Plate, Transformer Mtg.	
2	12	SCBP0832BN25	Screw, Machine	
	11	DELETED	(WAS NTH0632BC10)	
	10	DELETED	(WAS LWE06MRC)	
	9	DELETED	(WAS TE-113-149)	
X	8	TA-110-3	Tape, Rayon Acetate, 3/4" Wide	
X	7	MS-203-1-2.62	Lead, Connecting, 1/4" Wide	
5	6	PX-370-6-7	SLEEVING, INSULATION Teflon	
	5	PX-397-1	SLEEVING, INSULATION Teflon	
X	4	TA-110-7	Tape, Rayon Acetate, 1-3/4" Wide	
	3	TU-100-2S	Tubing, Copper, 59" Long	
8	2	CI-101-3Q	Cone	
1	1	SEE CHART	Case & Covers	

THE TECHNICAL MATERIEL CORP.  
 MAMARONECK, NEW YORK  
 TRANSFORMER, RF, 50 & 70.2  
 ASSEMBLY  
 1612-30-57  
 DRAWN: \_\_\_\_\_  
 ELEC. DES. APP. \_\_\_\_\_  
 MECH. DES. APP. \_\_\_\_\_  
 CHECKED: \_\_\_\_\_  
 FINAL APPROVAL: \_\_\_\_\_  
 A-1492 N

A-1492 N