

NOTICE TO PERSONS RECEIVING THIS DRAWING

THE TECHNICAL MATERIEL CORPORATION claims proprietary right in the material disclosed hereon. This drawing is issued in confidence for engineering information only and may not be reproduced or used to manufacture anything shown hereon without permission from THE TECHNICAL MATERIEL CORPORATION to the user. This drawing is loaned for mutual assistance and is subject to recall at any time.

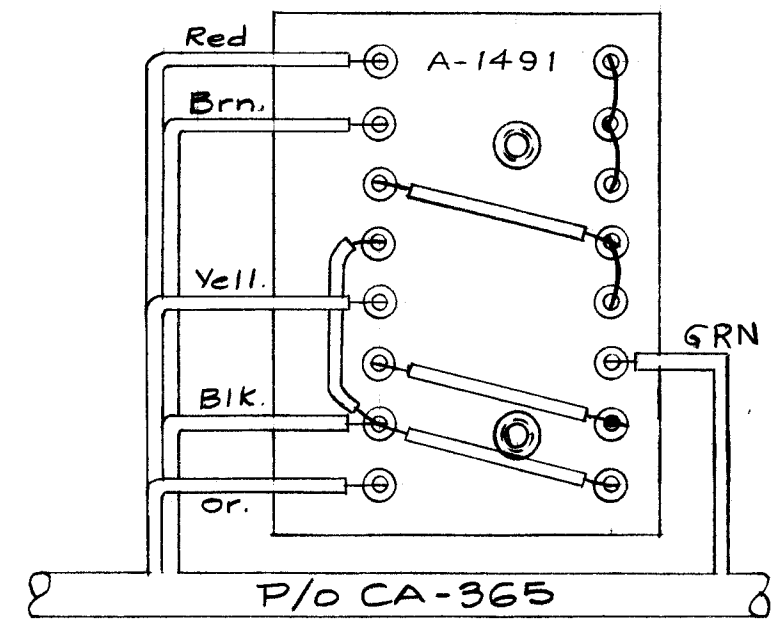
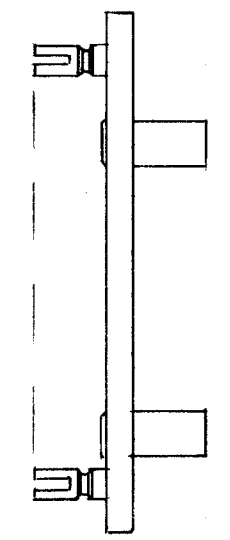
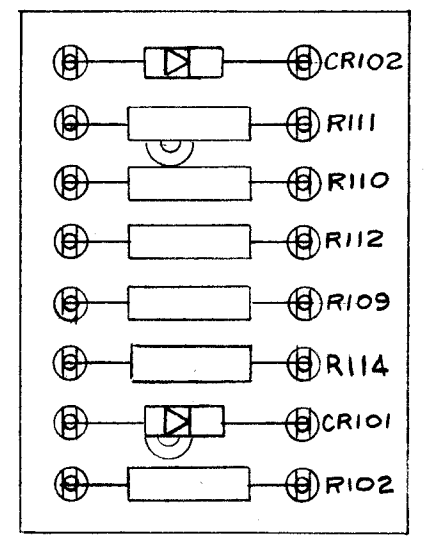
Property of:
THE TECHNICAL MATERIEL CORPORATION
MAMARONECK, NEW YORK

Stamp on Rear "A-1491"

⊗	ITEM-A	⊗	CR102
⊗	⊙	⊗	R111
⊗		⊗	R110
⊗		⊗	R112
⊗		⊗	R109
⊗		⊗	R114
⊗	⊙	⊗	CR101
⊗		⊗	R102

LETTERING as shown, 1/8 High Black Gothic.
MARKING PROCESS: AS PER TMC SPECIFICATION S-727
STAGE 3 (STAMPING)

All Jumpers to be item 3
All Jumper Sleeving to be item 4



Wire Board as Shown Upon Ass'y. to Unit

STAGE 4 (ELECTRICAL ASS'Y)

REQ.	ITEM	PART NO.	DESCRIPTION	SYMBOL
1		RC30GF124K	RESISTOR, FIXED COMP.	R114
X	10	BS-100	Solder, Soft	
3	9	RC30GF154K	Resistor, Fixed, Comp.	R112 R111 R110
1	8	RC30GF563K	Resistor, Fixed, Comp.	R109
-	7	DELETED	(WAS RC30GF164K, R108)	
1	6	RC30GF104K	Resistor, Fixed, Comp.	R102
2	5	1N39A	Xtal, Diode	CR102 CR101
X	4	PX-104-1-.034	Insulation, Sleeving	BIK.
X	3	WL-100-7	Wire, Buss #22	
2	2	TE-108-13	Standoff, Spacer	
16	1	TE-109-3	Terminal	

ISSUE	ITEM	CHANGED FROM	DATE	CH. NO.	DRAFTS	CHECKER	ENG. APP.
D	1	R114 WAS RC30GF104K	5/21/58	4	HR	JSR	JSR
C	1	R114 Added to item 6.	5/19/58	3	HR	W	JSR
B	1	ITEM 7 (RC30GF164K) DELETED	3/31/58	2	W	JSR	JSR
A	2	ITEM 8 WAS RC30GF393K	3/19/58	1	W	JSR	JSR
	1	ITEM 7 WAS RC30GF224K					

TOLERANCES: DEC. DIM. ±, FRAC. DIM. ± 1/64, ANGULAR DIM. ±

SCALE: FULL

MAXIMUM ALLOWABLE TOLERANCES HAVE BEEN DETERMINED AND ANY DEVIATIONS WILL BE CAUSE FOR REJECTION. REMOVE ALL BURRS AND SHARP EDGES

1	ATS-MCU	2-17-58
REQ. PER UNIT	MODEL	PROJECT NO.
		ASS'Y. NO.
		DATE
USED ON		

1/8 THK.		THE TECHNICAL MATERIEL CORP.	
STOCK SIZE		MAMARONECK, NEW YORK	
Phenolic		TERMINAL BOARD	
MATERIAL			
XXXXP Laminata		6/17/58	JSR
TYPE & TEMPER	HEAT TREAT. SPEC.	DRAWN	CHECKED
Natural		JSR	JSR
FINISH & SPEC. NO.	ELEC. DES. APP.	MECH. DES. APP.	
			A-1491 D