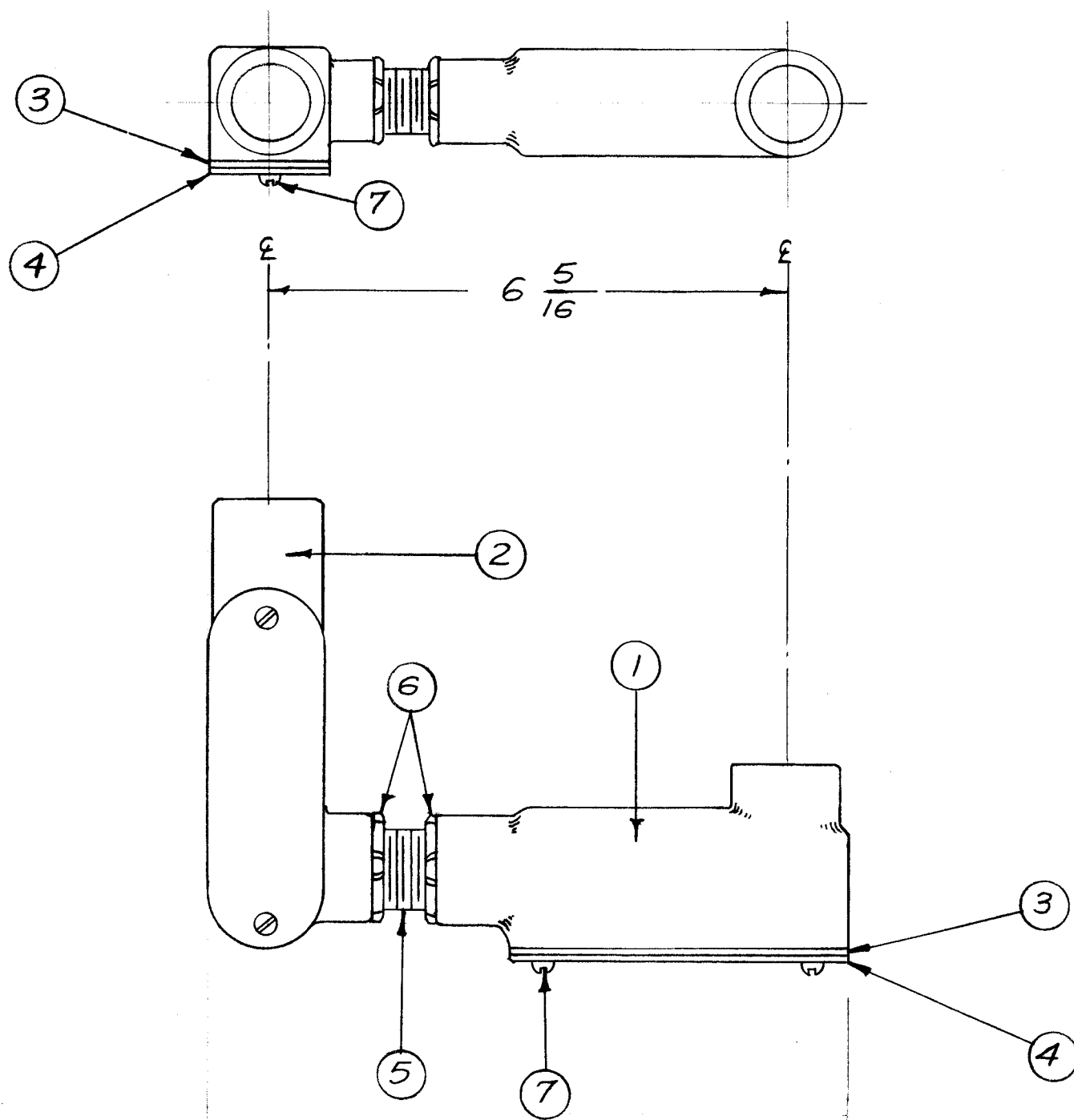


A-1485



NOTICE TO PERSONS RECEIVING THIS DRAWING
 THE TECHNICAL MATERIEL CORPORATION claims proprietary right in the material disclosed hereon. This drawing is issued in confidence for engineering information only and may not be reproduced or used to manufacture anything shown hereon without permission from THE TECHNICAL MATERIEL CORPORATION to the user. This drawing is loaned for mutual assistance and is subject to recall at any time.

Property of:
 THE TECHNICAL MATERIEL CORPORATION
 MAMARONECK, NEW YORK

FINISH
 S114 Zinc Chromate Primer
 S115 Smooth Grey Enamel
 (All Outside Surfaces)

REQ. ITEM	PART NO.	DESCRIPTION	SYMBOL
4	7	SCRS0B3ZBC8	Screw, Machine
2	6	NT-122	3/4" Locknut
1	5	PO-144	3/4" Close Nipple
2	4	MS-1095	Cover, Condulet
2	3	RY-120	Gasket, Cover
1	2	PO-146	Condulet, 3/4", LR
1	1	PO-145	Condulet, 3/4", LB

STOCK SIZE		THE TECHNICAL MATERIEL CORP. MAMARONECK, NEW YORK	
MATERIAL		CONDULET ASSEMBLY	
		TLI-1	
DATE	16/11/57	DRAWN	ACT
TYPE & TEMPER	SEE NOTE	CHECKED	ACT
HEAT TREAT. SPEC.		ELEC. DES. APP.	
FINISH & SPEC. NO.		MECH. DES. APP.	A-1485

ISSUE	ITEM	CHANGED FROM	DATE	CH. NO.	DRAFTS	CHECKER	ENG. APP.
TOLERANCES		SCALE: 1/2					
DEC. DIM. ±		MAXIMUM ALLOWABLE TOLERANCES HAVE BEEN DETERMINED AND ANY DEVIATIONS WILL BE CAUSE FOR REJECTION.					
FRAC. DIM. ±		REMOVE ALL BURRS AND SHARP EDGES					
ANGULAR DIM. ±							

1	TLI-1	A-1438	11-14-57
REQ. PER UNIT	MODEL	PROJECT NO.	ASS'Y. NO.
USED ON			