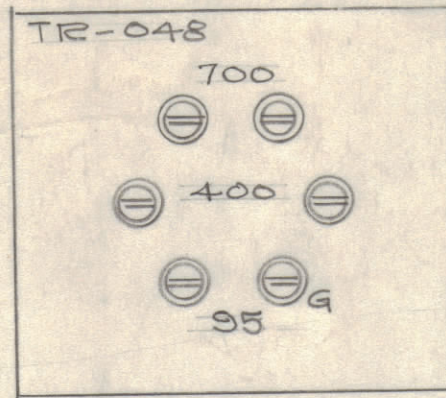
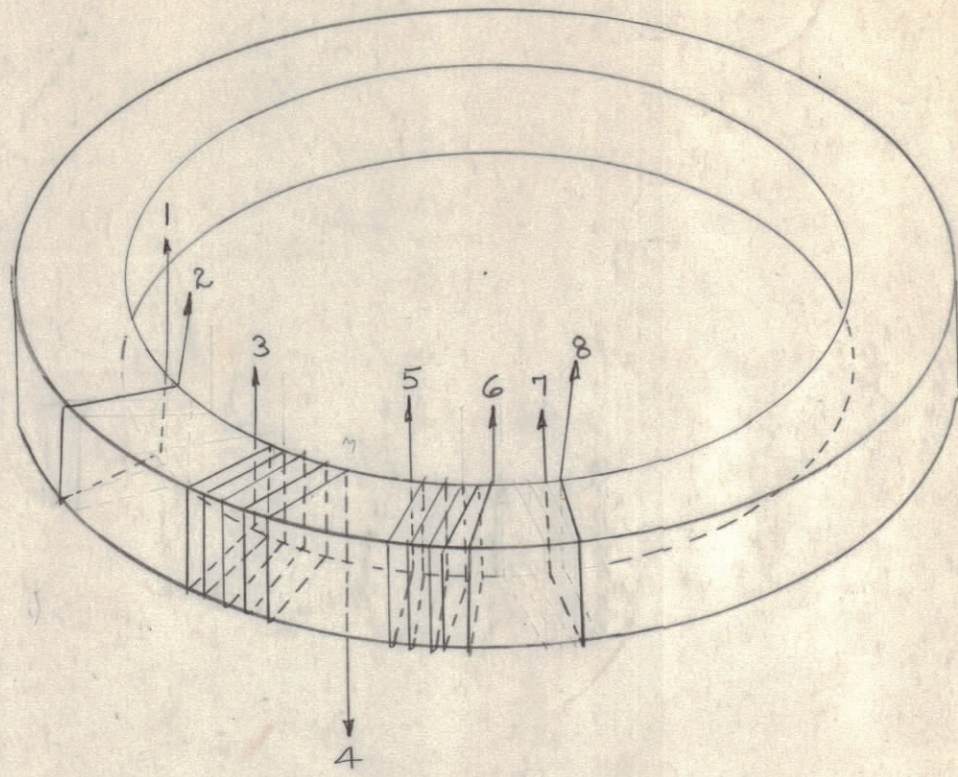
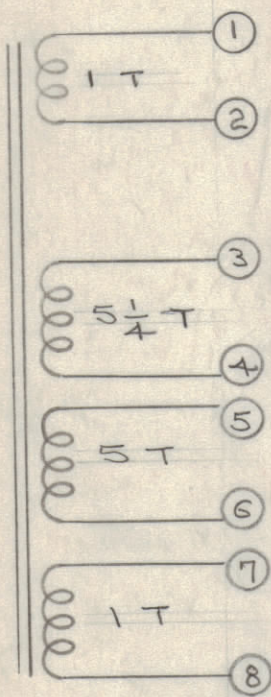


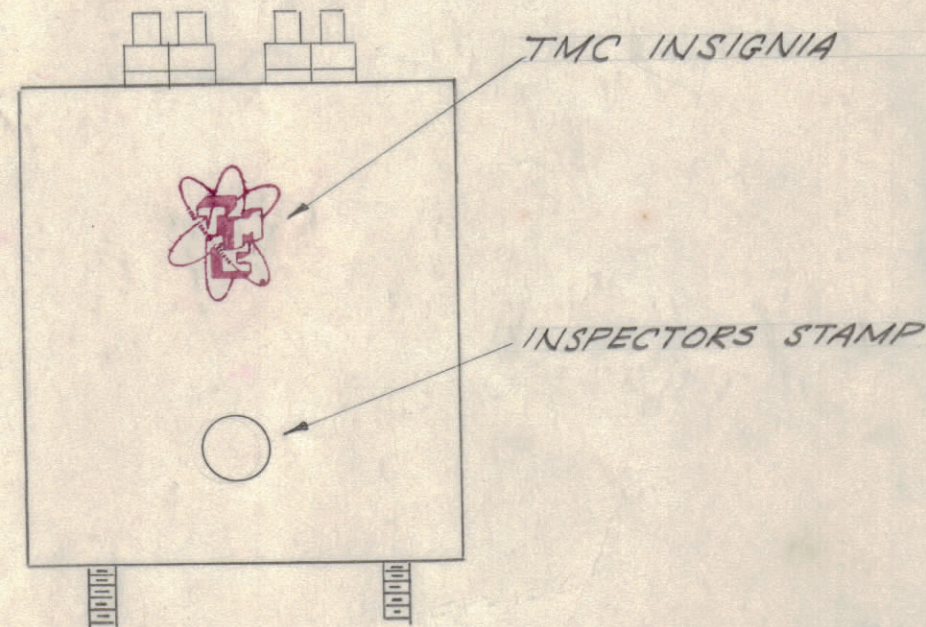
IF IT IS FOUND DESIRABLE TO CHANGE ANY TOLERANCE OR OTHER DETAIL SPECIFIED ON THIS DRAWING NOTIFY THE PURCHASER PROMPTLY.

MAXIMUM ALLOWABLE TOLERANCES HAVE BEEN DETERMINED AND DEVIATIONS WILL BE CAUSE FOR REJECTION. REMOVE ALL BURRS AND SHARP EDGES

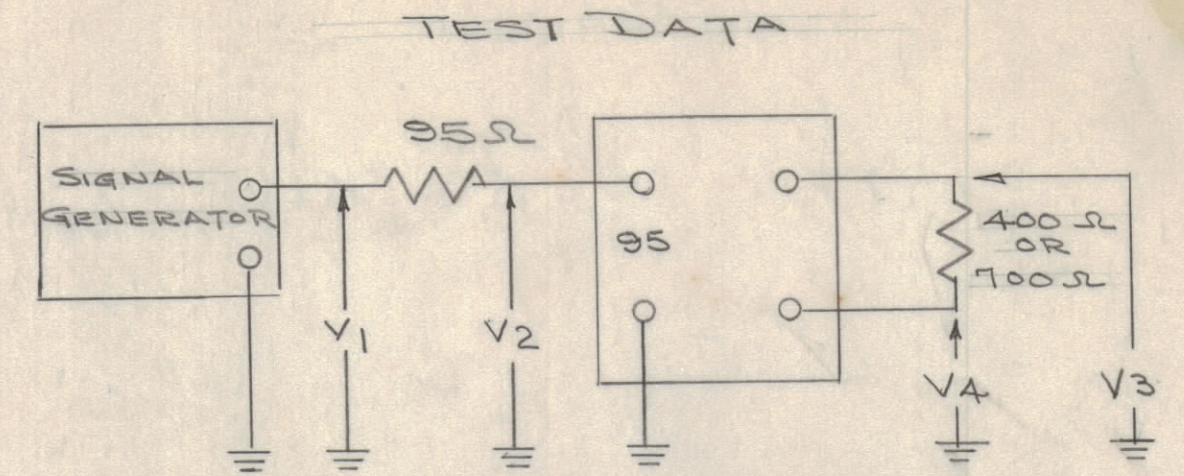
* AFTER PAINTING, STAMP AS SHOWN
1/8" HIGH, BLACK GOTHIC.



DO NOT PAINT TERMINALS.



DO NOT PAINT STUD END



TEST DATA

700Ω TERMINALS

* RF VOLTS				
f mc	V1	V2	V3	V4
2	1.0	.52	.60	.60
8	1.0	.50	.55	.60
30	1.0	.46	.50	.57

Frequency Response Ratio Of Highest To Lowest Voltage To Be Less Than 1.41(3db)

400Ω TERMINALS

* RF VOLTS				
f mc	V1	V2	V3	V4
2.0	1.0	.51	.46	.46
8.0	1.0	.48	.47	.44
30.0	1.0	.48	.46	.38

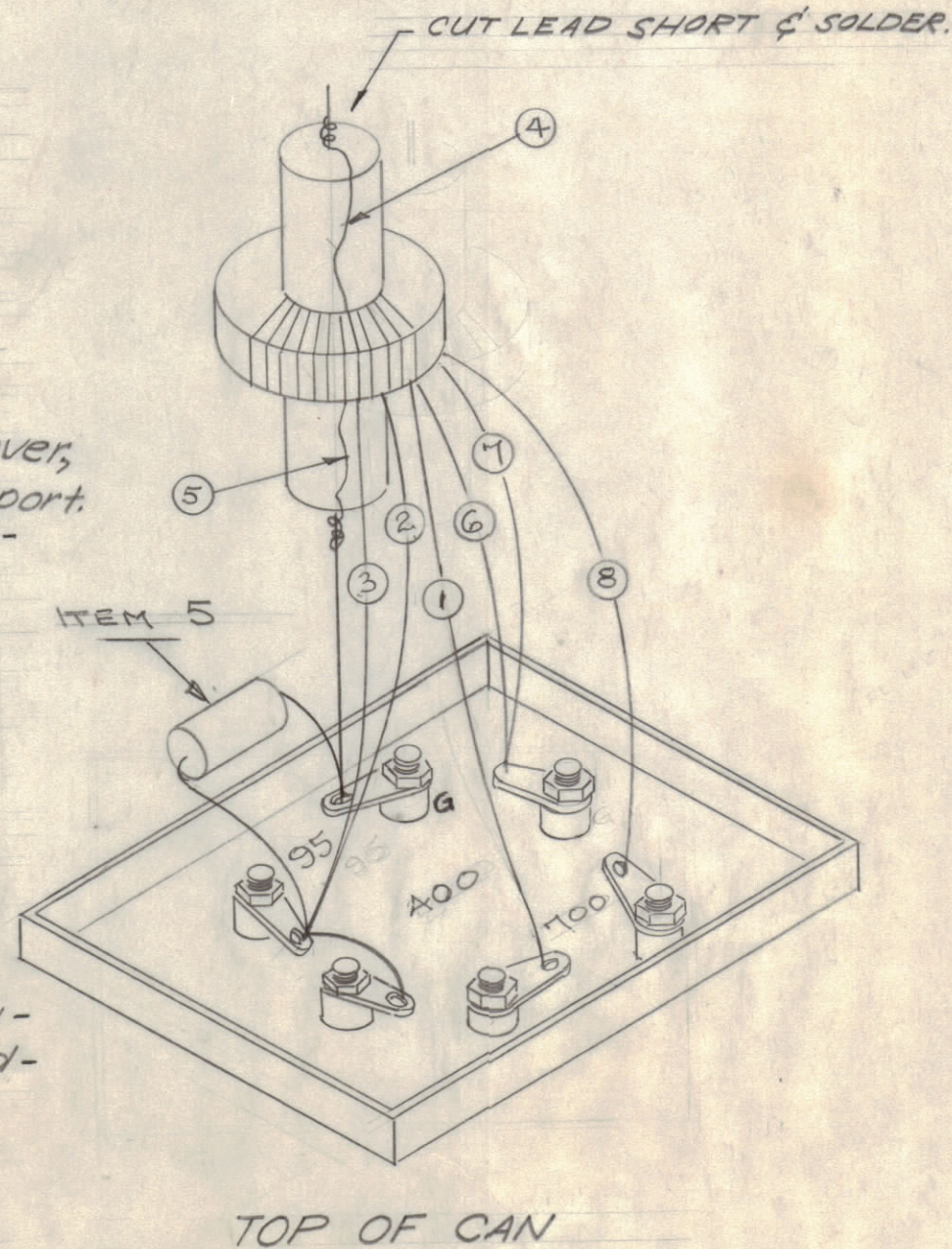
Frequency Response Ratio Of Highest To Lowest Voltage To Be Less Than 1.41(3db)

* VOLTAGE TOLERANCE ± 0.05 VOLTS

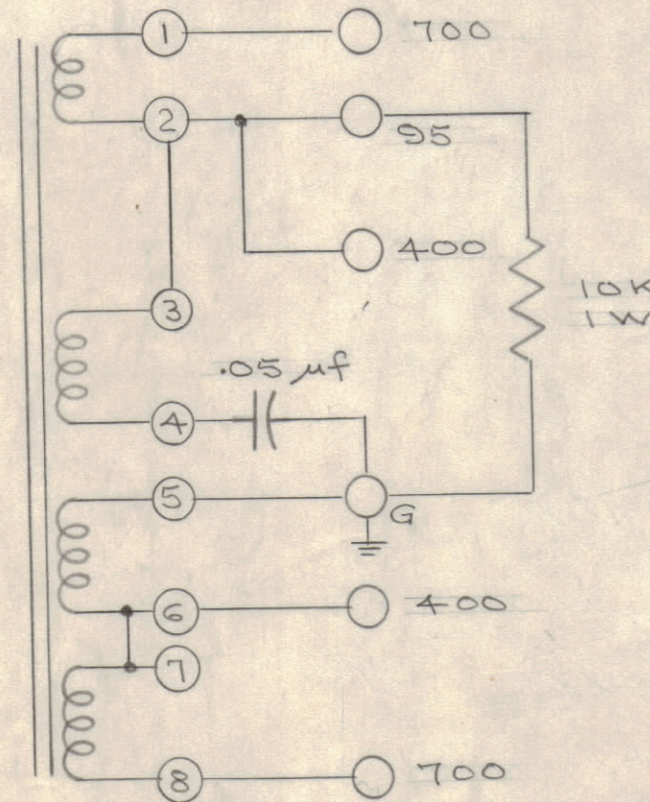
A-1462 C

FABRICATION PROCEDURE

1. Close wind toroid as shown. (All leads to be 2" long)
2. Slip toroid over capacitor, (item 3) & solder connect-leads 4 & 5 as shown.
3. Strip, tin and solder connect-leads as shown.
4. Keep coil at least 1/2" above cover, using capacitor lead for support.
5. Solder connect resistor (item 5) - across 95Ω terminals.
6. Test as shown.
7. Solder terminal end in place.
8. Fill can to within 1/4" of top with - GL-106 (item 6)
9. Solder stud end in place.
10. Allow to cool for 2 hours.
11. Smooth all seams & clean-case.
12. Prime (S-114) & Paint TMC gray - (S-115) all surfaces except stud-end & terminals.
- * 13. Stamp as shown on Top Cover 1/8 High Black Gothic.
14. Stamp TMC Insignia On Side Of Can.



TOP OF CAN



NOT TO BE RELEASED W/O AUTHORIZATION

AUTH. BY: _____
DATE: _____

REQ. ITEM	PART NO.	DESCRIPTION	SYMBOL
X 7	BS-100	SOLDER, SOFT	
X 6	GL-106	COMPOUND, POTTING	
1 5	RC30GF103K	RESISTOR, FIXED	
1 4	BX-107	CAN	
1 3	CN-100-3	CAPACITOR, FIXED	
X 2	WI-102-9-0	WIRE, MAGNET	
1 1	CI-104	CORE, RING TYPE	

THE TECHNICAL MATERIEL CORP. MAMARONECK, NEW YORK			
STOCK SIZE			
TRANSFORMER RF			
MATERIAL WEIGHT PER PC.			
TR 048			
TYPE & TEMPER		91057	
HEAT TREAT. SPEC.		CHECKED	
FINISH & SPEC. NO.		A-1462 C	

ISSUE ITEM	CHANGED FROM	DATE	CN. NO.	DRAFTS	CHECKER	ENG. APP.
C 1	400Ω & 700Ω Specs Revised	2-13-62	6266	16		
B 1	NOTE (13) REVISED; NOTE (4) ADDED	1-16-62	6213	16		
A 1	VOLT CHART READINGS ADDED	10/10/57	1	16		

TOLERANCES		SCALE:
ALL OTHERS	DEC. DIM. ± FRAC. DIM. ± ANGULAR DIM. ±	DRILL, PUNCH, COMMERCIAL STOCK SIZES AND MANUFACTURERS TOLERANCES ARE NOT INCLUDED.

1	RAC-3	PROJECT NO.	A-14E3	ASS'Y. NO.	9-10-57	DATE
REQ. PER UNIT	MODEL	PROJECT NO.	ASS'Y. NO.	DATE	USED ON	