

IF IT IS FOUND DESIRABLE TO CHANGE ANY TOLERANCE OR OTHER DETAIL SPECIFIED ON THIS DRAWING NOTIFY THE PURCHASER PROMPTLY.

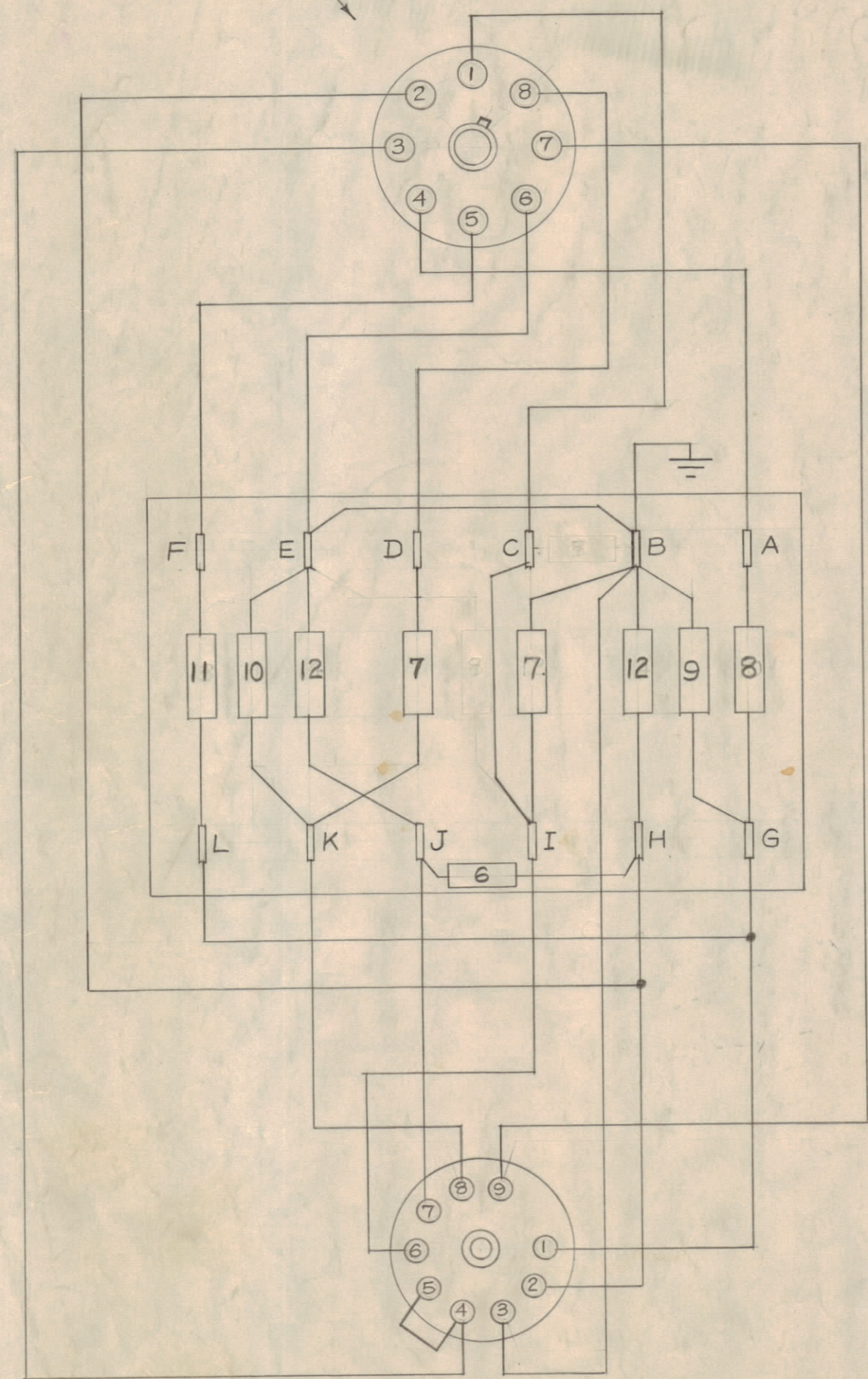
MAXIMUM ALLOWABLE TOLERANCES HAVE BEEN DETERMINED AND DEVIATIONS WILL BE CAUSE FOR REJECTION. REMOVE ALL BURRS AND SHARP EDGES

NOTICE TO PERSONS RECEIVING THIS DRAWING

THE TECHNICAL MATERIEL CORPORATION claims proprietary right in the material disclosed hereon. This drawing is issued in confidence for engineering information only and may not be reproduced or used to manufacture anything shown hereon without permission from THE TECHNICAL MATERIEL CORPORATION to the user. This drawing is loaned for mutual assistance and is subject to recall at any time.

Property of:
THE TECHNICAL MATERIEL CORPORATION
MAMARONECK, NEW YORK

Octal Plug (P/O item 1)

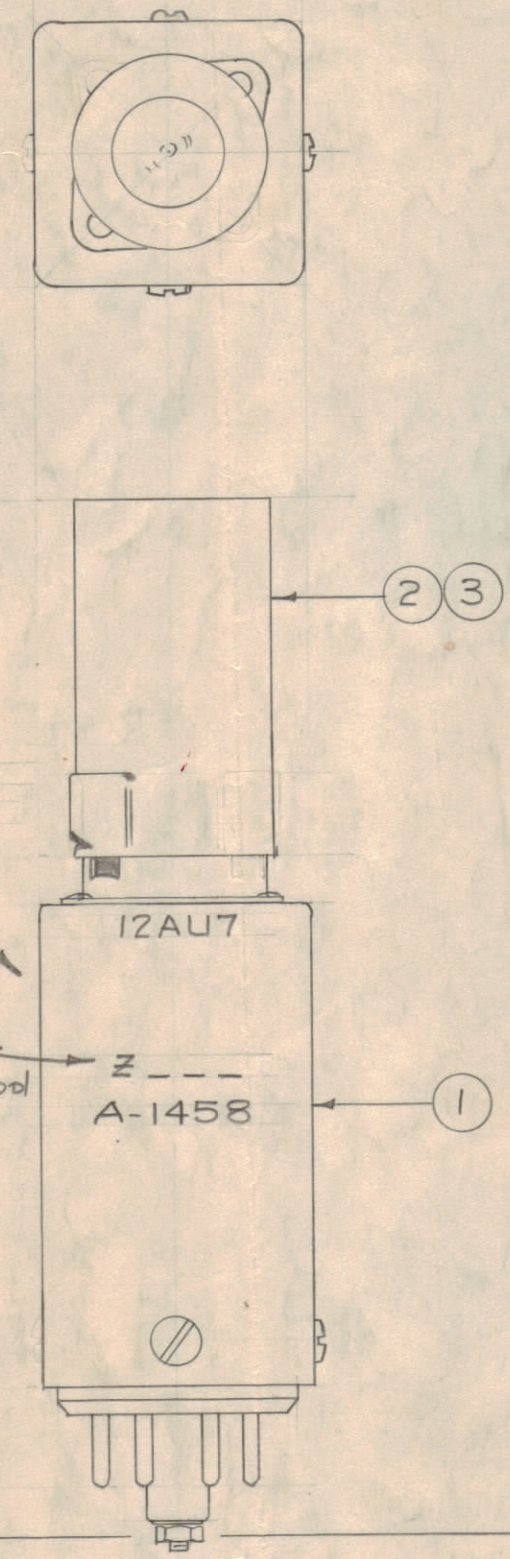


Noval Socket (P/O item 1)

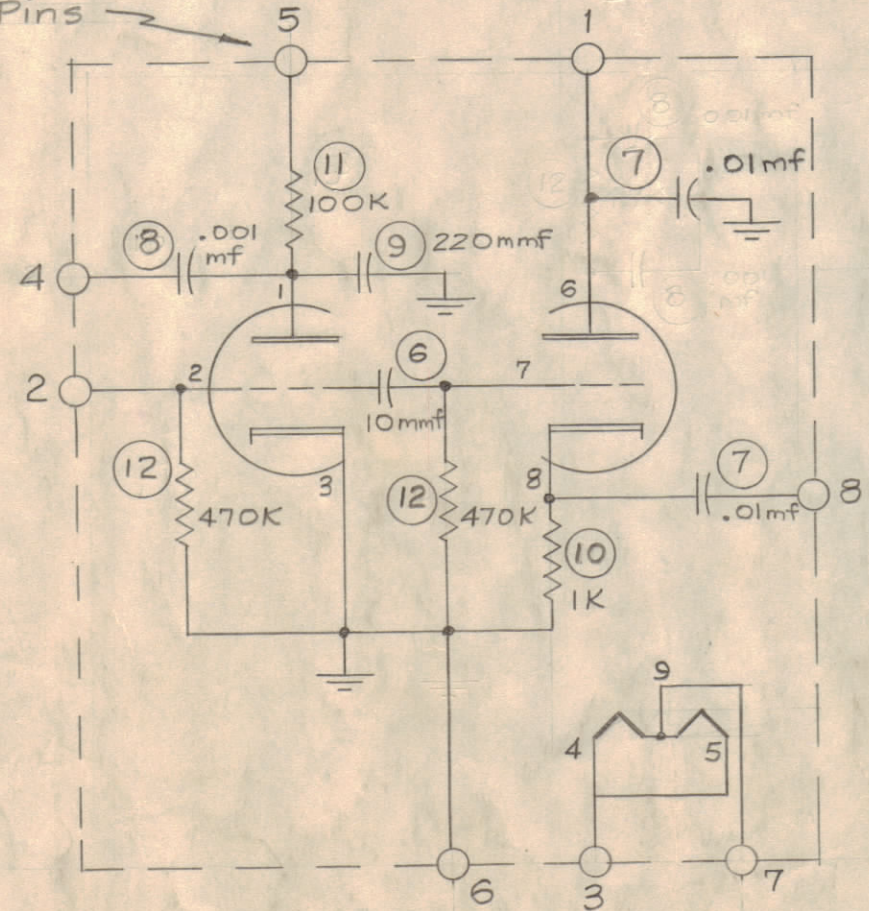
- Notes:
- Wire pin "B" of turret to ground lug provided on can.
 - Turret in view above is shown flattened for clarity.
 - Wire unit as shown above. Use sleeving wherever the danger of shorting exists. Solder all connections.
 - All wiring to be item 4 (WL-100-8).

Stamp 1/8 high black Gothic (this side)

See Stamping Chart Below See Chart below (2) stamp for appropriate "Z" Symbol A-1458



Octal Plug Pins



A-1458 B

B #	IT 10, 11, 12 J WASK	1/1/66	15540	AV	JOB	
A #	IT 9 WAS CM 20D221K	1/1/66	15028	AV	JOB	
	IT 8 WAS CM 20D102K					
ISSUE	ITEM	CHANGED FROM	DATE	CN. NO.	DRAFTS	CHECKER
						ENG. APP.
TOLERANCES		SCALE:				
ALL OTHERS	DEC. DIM. ± FRAC. DIM. ± ANGULAR DIM. ±	DRILL, PUNCH, COMMERCIAL STOCK SIZES AND MANUFACTURERS TOLERANCES ARE NOT INCLUDED.				

STAMPING CHART

1	AX205-B	250KC	Z103	
1	SBE-3(Ax-205)	250KC	Z103	
1	SBE-2	287KC	Z103	
1	SBE-1	287KC	Z103	9-4-57
REQ PER UNIT	MODEL	OSC. FREQ.	"Z" STAMP	DATE
				USED ON

TMC ASSY. NO.	DESCRIPTION	USED ON
A1458	AS SHOWN (ALL ITEMS)	SBE, SYM Z103.
A1458-2	LESS ITEMS 2 AND 3	SBE, SYM A101 PART NO. NW103

NOTE: A1458-2 (NW103) IS FOR SPARE PARTS USE ONLY.

REQ.	ITEM	PART NO.	DESCRIPTION	SYMBOL
X	13	BS-100	Solder, Soft	
2	12	RC20GF474J	Resistor, Fixed, Comp	
1	11	RC20GF104J	Resistor, Fixed, Comp.	
1	10	RC20GF102J	Resistor, Fixed, Comp.	
1	9	CM15F221G03	Capacitor, Fixed, Mica	
1	8	CM20F102G03	Capacitor, Fixed, Mica	
2	7	CC-100-16	Capacitor, Fixed, Ceramic	
1	6	CC215L100D	Capacitor, Fixed, Ceramic	
X	5	PX-104-5-.022	Sleeving #24	Brn.
X	4	WL-100-8	Wire, Buss #24	
1	3	TS103U02	Shield, Tube	
1	2	12AU7	Tube, Electron	
1	1	PO-148-9-2	Plug-In Socket	

THE TECHNICAL MATERIEL CORP. MAMARONECK, NEW YORK			
STOCK SIZE			
OSCILLATOR ASSY.			
MATERIAL	WEIGHT PER PC.		
TYPE & TEMPER	16 9-4-57	DB	DB
HEAT TREAT. SPEC.	CHECKED	FINAL APPROVAL	
FINISH & SPEC. NO.	A-1458 B		