

IF IT IS FOUND DESIRABLE TO CHANGE ANY TOLERANCE OR OTHER DETAIL SPECIFIED ON THIS DRAWING NOTIFY THE PURCHASER PROMPTLY.
 MAXIMUM ALLOWABLE TOLERANCES HAVE BEEN DETERMINED AND DEVIATIONS WILL BE CAUSE FOR REJECTION.
 REMOVE ALL BURRS AND SHARP EDGES

NOTICE TO PERSONS RECEIVING THIS DRAWING

THE TECHNICAL MATERIEL CORPORATION claims proprietary right in the material disclosed hereon. This drawing is issued in confidence for engineering information only and may not be reproduced or used to manufacture anything shown hereon without permission from THE TECHNICAL MATERIEL CORPORATION to the user. This drawing is loaned for mutual assistance and is subject to recall at any time.

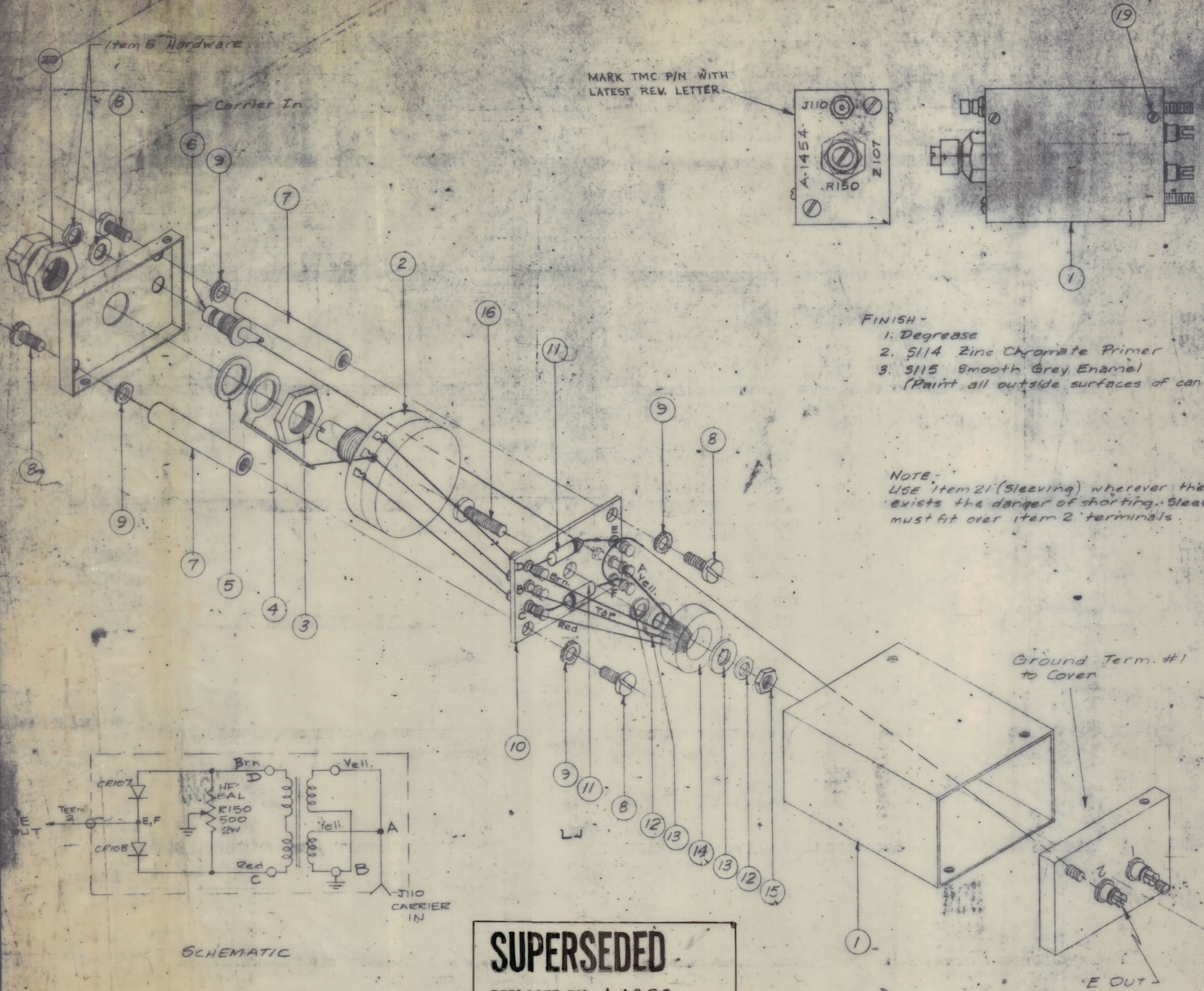
Property of:
 THE TECHNICAL MATERIEL CORPORATION
 MAMARONECK, NEW YORK

Stamp Unit as shown - 1/8 high, blk. Gothic. (After Painting)

MARK TMC P/N WITH LATEST REV. LETTER

Item 6 Hardware

Carrier In



FINISH -
 1. Degrease
 2. 5114 Zinc Chromate Primer
 3. 5115 Smooth Grey Enamel
 (Paint all outside surfaces of can except terminal end.)

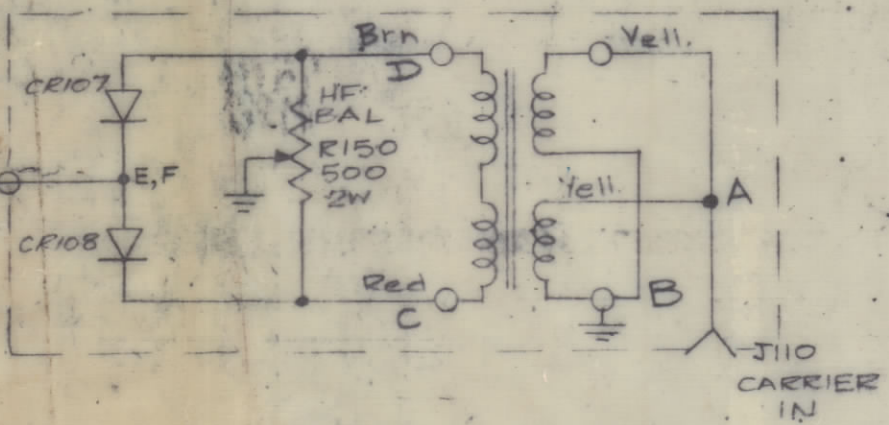
NOTE -
 USE Item 21 (Sleeving) wherever there exists the danger of shorting. Sleeving must fit over item 2 terminals.

Ground Term. #1 to Cover

E OUT

SUPERSEDED
 REPLACED BY A4230
 PER EMN # 13941 4/26/65 R/L

QTY	ITEM	PART NO.	DESCRIPTION	SYMBOL
X	21	BX-104-1-106	Insulation, Sleeving	
				A-1454 L
1	20	PC-104	Lock, Shaft	
4	19	SFB0256SN3	Screw, Thd. Cutting	
X	18	BS-100	Solder, Soft	
X	17	WL-100-7	Wire, Buss	
1	16	SCBP0632BN11	Screw, Machine	
1	15	NTH0632BNH0	Nut, Hex.	
1	14	TF-172	Transformer, HF Mod.	
2	13	WA-109-38	Washer, Fibre	
2	12	FW08HBN	Washer, Flat	
2	11	IN34A	Diode, Xtal	
1	10	PX-378	Terminal Board	
4	9	LW06GMRN	Lockwasher, Ext.	
4	8	SCBP0632BN6	Screw, Machine	
2	7	TE-135-5	Standoff, Spacer	
1	6	JJ-154	Connector, Receptacle, Male	
1	5	LW13TMRN	Lockwasher, Int.	
1	4	TE-111-2	Lug, Solder	
1	3	NTH3732BN16	Nut, Hex.	
1	2	PV4ATSD501A	Resistor, Variable	R150
1	1	BX-153	Case & Covers	



SCHEMATIC

ISSUE	ITEM	CHANGED FROM	DATE	EN. NO.	DRAFTS	CHECKER	ENG. APP.
L		SUPERSEDED NOTE ADD.	4-26-65	13941	RL		
K	1	IT. 11 WAS IN39B	3-22-65	13752	RL		
J	1	ITEM 2 ADDED SYM. R150 ITEMS 8 & 16 WERE SLOTTED ROTATED BOTTOM COVER	4/17/64	11251	A.M.		

REQ. PER UNIT	MODEL	PROJECT NO.	SYMBOL ASSGN. NO.	DATE
1	SBE-3		AX-204	11-30-59
1	SBE-1		Z107	8-19-57

REQ. ITEM	PART NO.	DESCRIPTION	SYMBOL
THE TECHNICAL MATERIEL CORP. MAMARONECK, NEW YORK			
H.F. MODULATOR (SBE-1)			
STOCK SIZE			
MATERIAL		WEIGHT PER FC.	
TYPE & TEMPER		DRAWN	
HEAT TREAT. SPEC.		CHECKED	
		FINAL APPROVAL	
		A-1454 L	