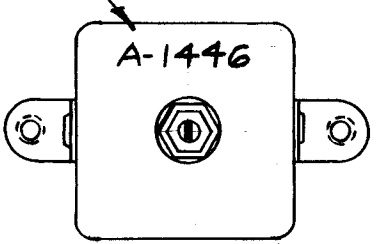
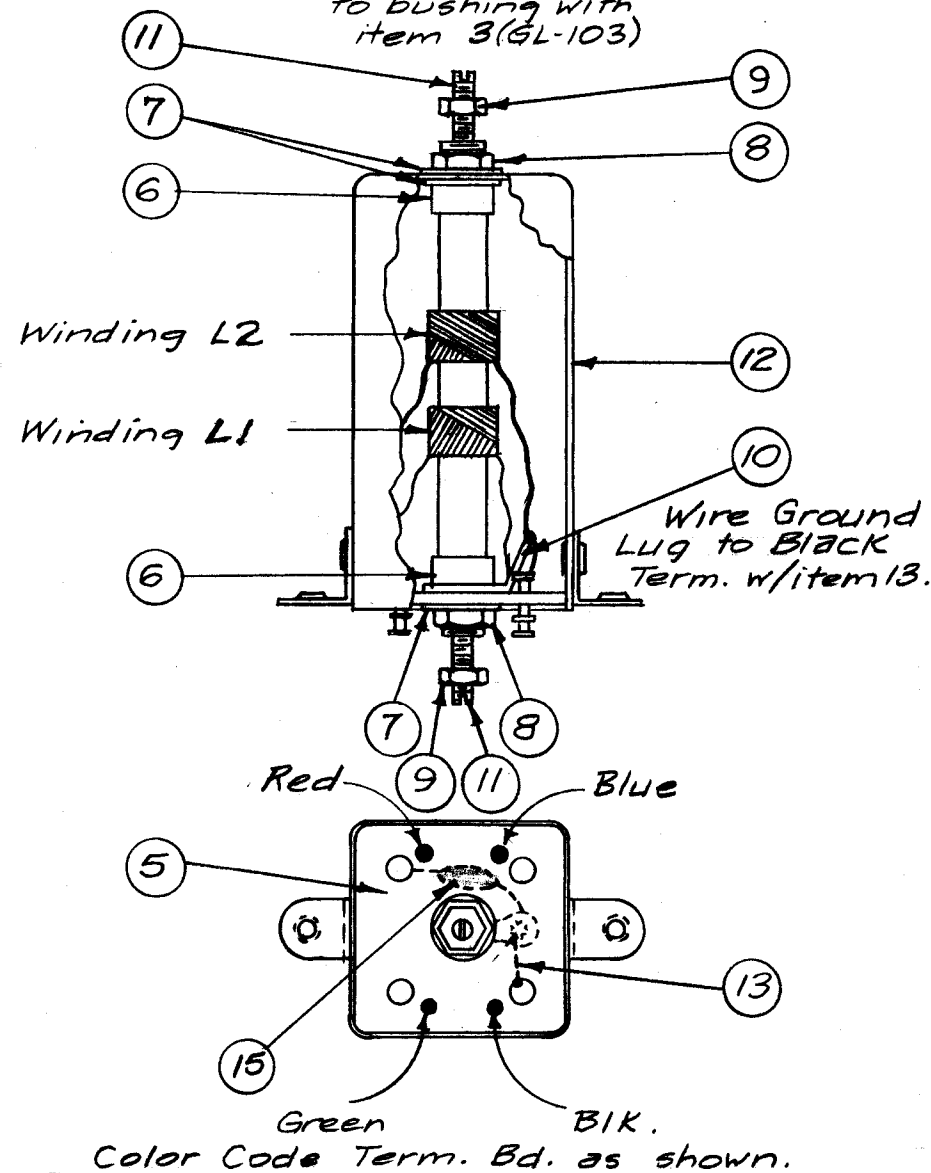


A-1446 B

Stamp Can as shown - 1/8 high black Gothic.
Note - Stamp TMC Insigna & Approval on side of Can.



Cement Coil Form to bushing with item 3 (GL-103)



Winding Machine Data

Cam Gear 105
Driver Gear 69
Cam .250

Winding Data

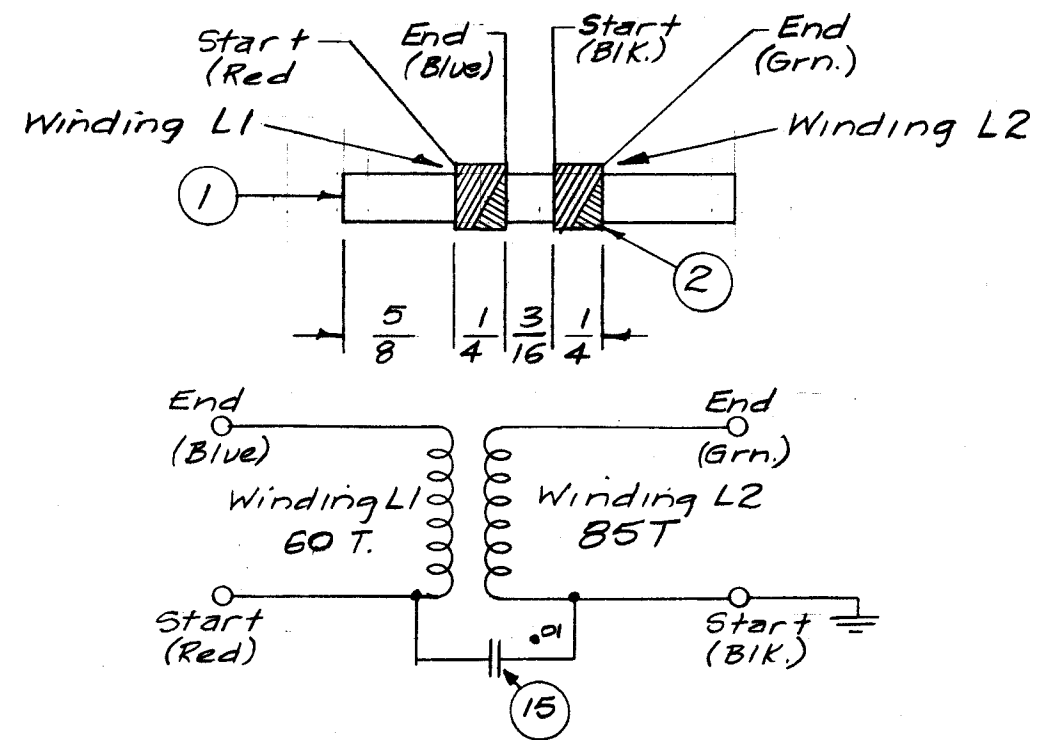
1. Start Winding L1 5/8" from end of form.
2. End Winding L1 at 60 turns.
3. Keep all leads approx. 3" long.
4. Stake leads to coil form with GL-103 (item 3).
5. Start Winding L2 3/16" from end of Winding L1.
6. End Winding L2 at 85 turns.
7. Stake leads to coil form.
8. Bake for 1/2 hour at 215° F.
9. Immediately apply coating of GL-104-2 (item 4).
10. Bake hard for 1/2 hour at 215° F.
11. Test as below.
12. Assemble as shown at left.

Test Data (w/o CORE)

Winding L1 (Red-Blue) - 19 (18-20) microhenries.
Q = 55 or Greater Freq. = 2.5 Mc.

Winding L2 (Grn.-Blk.) - 38.5 (37.5-39.5) microhenries.
Q = 50 or Greater Freq. = 2.5 Mc.

Use Boonton Radio Corp. Q Meter Model 160A or Equiv.



NOTICE TO PERSONS RECEIVING THIS DRAWING

THE TECHNICAL MATERIEL CORPORATION claims proprietary right in the material disclosed hereon. This drawing is issued in confidence for engineering information only and may not be reproduced or used to manufacture anything shown hereon without permission from THE TECHNICAL MATERIEL CORPORATION to the user. This drawing is loaned for mutual assistance and is subject to recall at any time.

Property of:
THE TECHNICAL MATERIEL CORPORATION
MAMARONECK, NEW YORK

REQ. ITEM	PART NO.	DESCRIPTION	SYMBOL
1	15	CC-100-16 Capacitor, Fixed .01	
X	14	BS-100 Solder, Soft	
X	13	WL-100-7 Wire, Buss	
1	12	A-1440 Can Ass'y.	
2	11	CI-116-5 Core, Tuning	Red
1	10	TE-104-3 Lug	
2	9	NTH0348BC6 Nut, Hex.	
2	8	NTH0832BC8 Nut, Hex.	
3	7	LW108MRC Lockwasher, Int.	
2	6	SM-140-2 Bushing, Coil Mtg.	
1	5	PX-379 Terminal Board	
X	4	GL-104-2 Insulex, UB5	
X	3	GL-103 Cement, Duco	
X	2	WI-104-5415CQS Wire, Litz	
1	1	CF-122-2.062 Coil Form	

ISSUE	ITEM	CHANGED FROM	DATE	CH. NO.	DRAFTS	CHECKER	ENG. APP.
B	1	L2 WAS 60T/ L1 IND. WAS 20/L2 IND. WAS 20	4/7/58	2	15	JHE	ORP
A	1	Item 15 Added - Red was Blue, Blue was Red	9/19/57	1	16	ORP	ORP

TOLERANCES: DEC. DIM. ±, FRAC. DIM. ±, ANGULAR DIM. ±

SCALE: 1-1038

MAXIMUM ALLOWABLE TOLERANCES HAVE BEEN DETERMINED AND ANY DEVIATIONS WILL BE CAUSE FOR REJECTION. REMOVE ALL BURRS AND SHARP EDGES

1	SBE-1	T110	8-8-57
REQ. PER UNIT	MODEL	PROJECT NO.	ASS'Y. NO.
			DATE
USED ON			

STOCK SIZE				THE TECHNICAL MATERIEL CORP. MAMARONECK, NEW YORK			
MATERIAL				TRANSFORMER, 2-4 Mc., MF AMP.			
TYPE & TEMPER		HEAT TREAT. SPEC.		DRAWN		CHECKED	
				16 5/8/57 JHE		ORP	
FINISH & SPEC. NO.		ELEC. DES. APP.		MECH. DES. APP.		FINAL APPROVAL	
						A-1446 B	