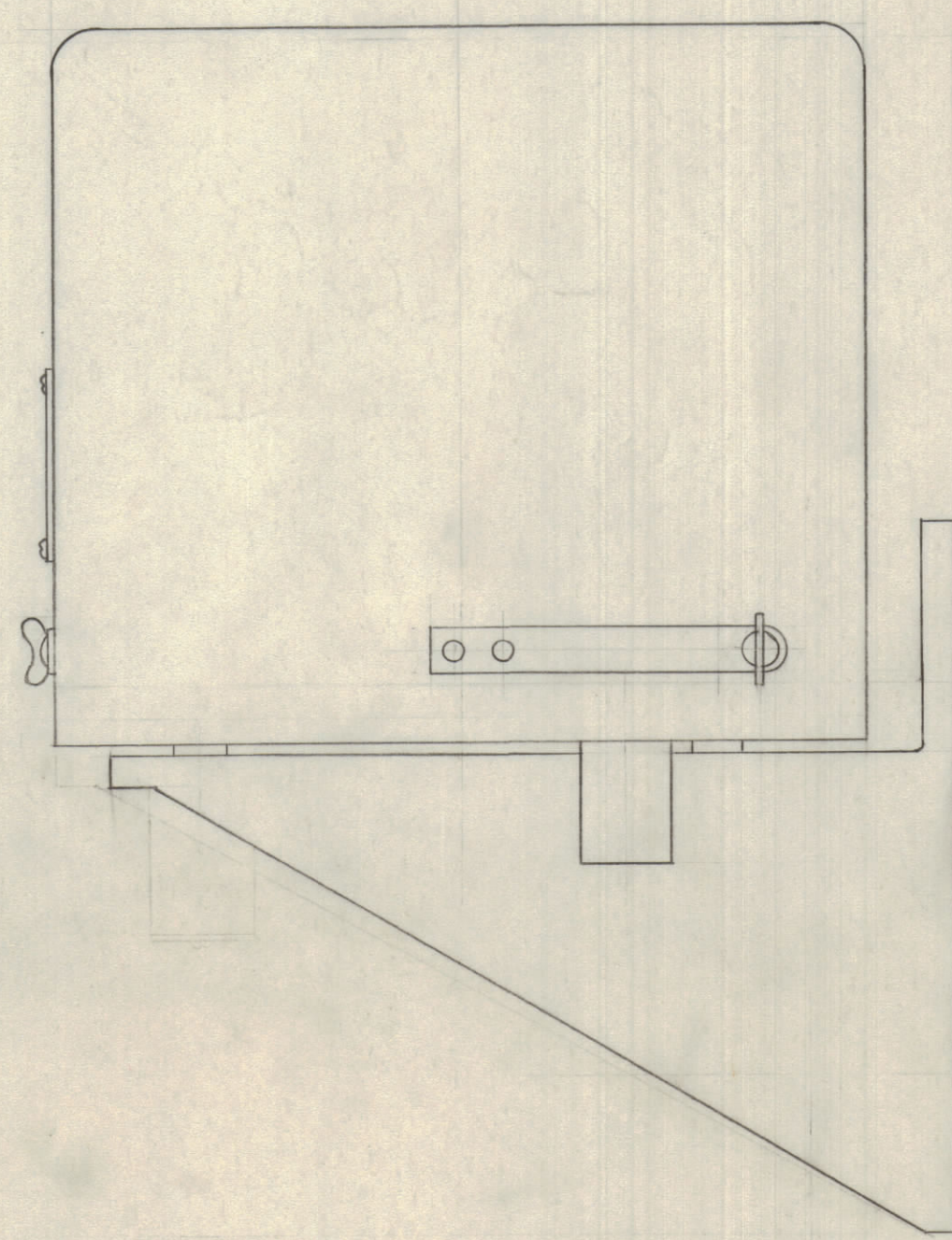
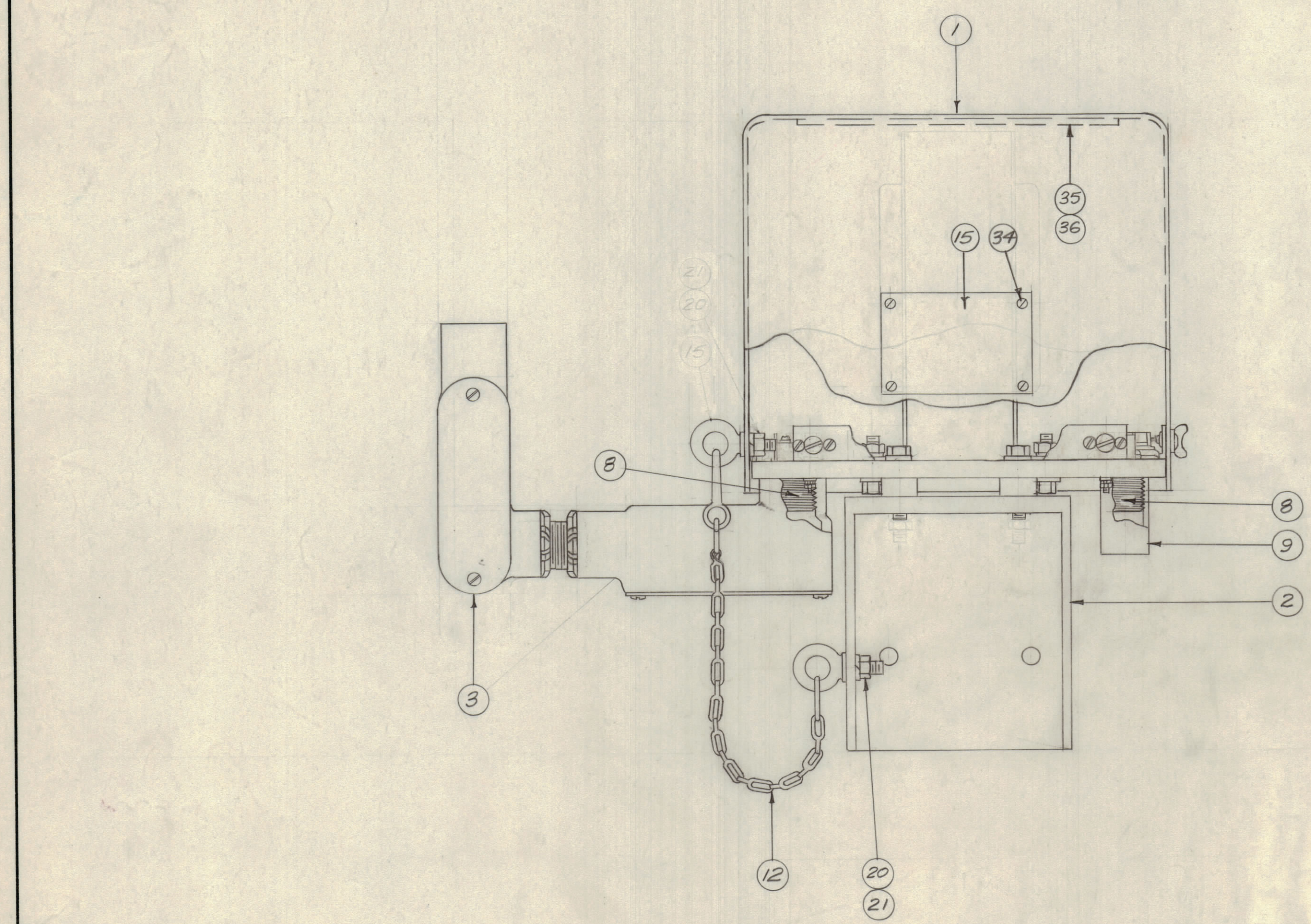
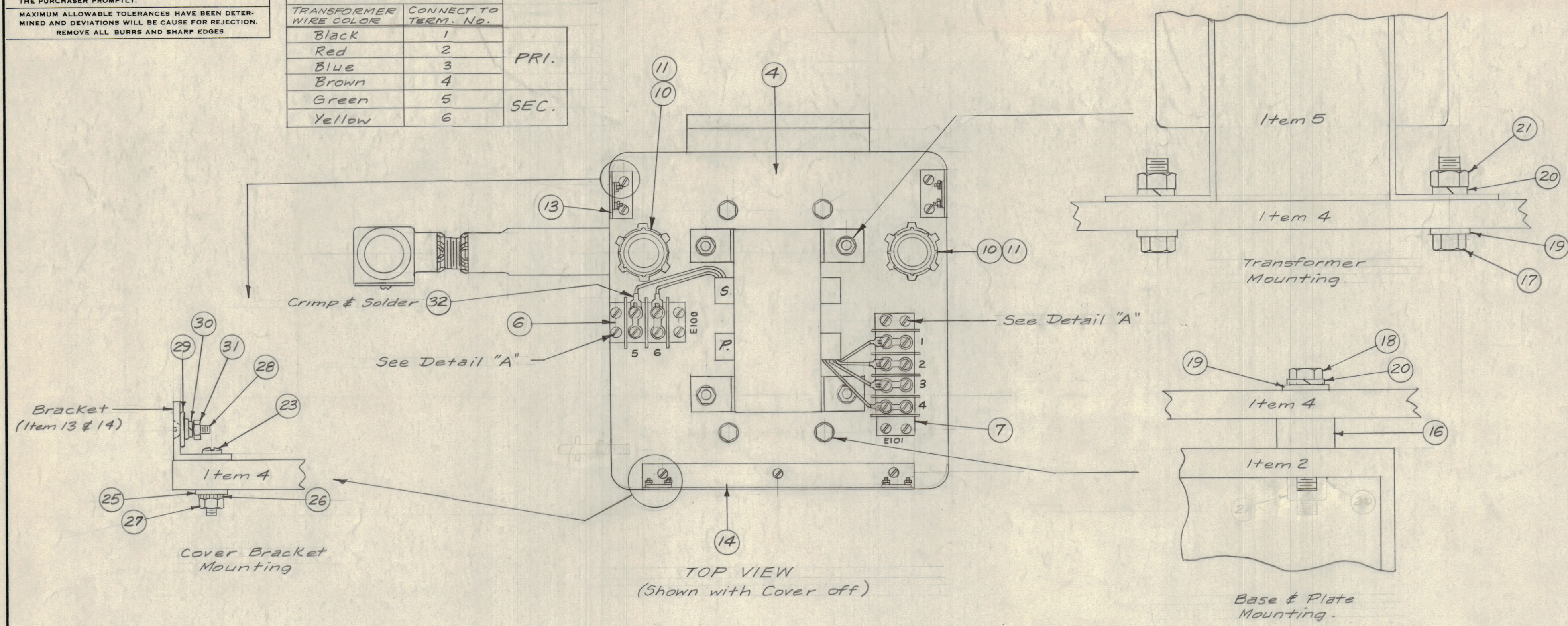


IF IT IS FOUND DESIRABLE TO CHANGE ANY TOLERANCE OR OTHER DETAIL SPECIFIED ON THIS DRAWING NOTIFY THE PURCHASER PROMPTLY.
 MAXIMUM ALLOWABLE TOLERANCES HAVE BEEN DETERMINED AND DEVIATIONS WILL BE CAUSE FOR REJECTION. REMOVE ALL BURRS AND SHARP EDGES.

TRANSFORMER CONN.		
TRANSFORMER WIRE COLOR	CONNECT TO TERM. No.	
Black	1	PRI.
Red	2	
Blue	3	
Brown	4	
Green	5	SEC.
Yellow	6	



NOTICE TO PERSONS RECEIVING THIS DRAWING
 THE TECHNICAL MATERIEL CORPORATION claims proprietary right in the material disclosed hereon. This drawing is issued in confidence for engineering information only and may not be reproduced or used to manufacture anything shown hereon without permission from THE TECHNICAL MATERIEL CORPORATION to the user. This drawing is loaned for mutual assistance and is subject to recall at any time.
 Property of:
 THE TECHNICAL MATERIEL CORPORATION
 MAMARONECK, NEW YORK

REQ. NO.	ITEM	PART NO.	DESCRIPTION	SYMBOL
X	36	GL-101-2	Cement, Pliobond 30	
1	35	LD-353	Schematic	
4	34	SF804A05C4	Screw, Self Tapping	
X	33	BS-100	Solder, Soft	
6	32	TE-159-34161	Lug	
8	31	NTH0348BC6	Nut, Hex.	
8	30	LW503MRC	Lockwasher, Split	
4	29	FS-102-2	Spring, "5" Type	
8	28	SCFS03488C4	Screw, Machine	
15	27	NTH0832BC10	Nut, Hex.	
15	26	LWE08MRC	Lockwasher, Ext.	
15	25	FW08HBC	Washer, Flat	
8	24	SCBS08328C16	Screw, Machine	
7	23	SCBS08328C10	Screw, Machine	
4	22	MS-154-3	Straddle Plate	
5	21	NTH2520BC14	Nut, Hex.	
9	20	LW525MRC	Lockwasher, Split	
8	19	FW25HBC	Washer, Flat	
4	18	SCHH2520BC20	Screw, Hex. Hd.	
4	17	SCHH2520BC16	Screw, Hex. Hd.	
4	16	PM-449	Stand-off Bushing	
1	15	NP-103-38	Nameplate	
1	14	MS-1082	Cover Bracket, Front	
2	13	MS-1081	Cover Bracket	
1	12	A-1436	Chain Ass'y.	
2	11	PO-142	3/4" Pipe Bushing	
2	10	NT-122	3/4" Locknut	
1	9	PO-143	3/4" Pipe Coupling	
2	8	PO-144	3/4" Close Nipple	
1	7	TM-120-4	Terminal Strip	
1	6	TM-120-2	Terminal Strip	
1	5	TF-171	Transformer, Isolation	
1	4	PX-372	Transformer Mtg. Plate	
1	3	A-1485	Condulet Ass'y.	
1	2	PM-465	Base, Mtg.	
1	1	A-1484	Cover Ass'y.	

THE TECHNICAL MATERIEL CORP. MAMARONECK, NEW YORK			
FINAL ASSEMBLY			
TLI-1			
TYPE & TEMPER	DATE	DRAWN	ELEC. DES. APP. / MECH. DES. APP.
	11-14-57		
HEAT TREAT. SPEC.		CHECKED	FINAL APPROVAL
FINISH & SPEC. NO.		INSTALLATION	
		A-1438	

ISSUE	ITEM	CHANGED FROM	DATE	CN. NO.	DRAFTS	CHECKER	ENG. APP.
TOLERANCES							
SCALE:							
ALL OTHERS	DEC. DIM. ±	FRAC. DIM. ±	ANGULAR DIM. ±	DRILL PUNCH, COMMERCIAL STOCK SIZES AND MANUFACTURERS TOLERANCES ARE NOT INCLUDED.			

1	MODEL	PROJECT NO.	ASSY. NO.	DATE
1	TLI-1			11-14-57