

IF IT IS FOUND DESIRABLE TO CHANGE ANY TOLERANCE OR OTHER DETAIL SPECIFIED ON THIS DRAWING NOTIFY THE PURCHASER PROMPTLY.

MAXIMUM ALLOWABLE TOLERANCES HAVE BEEN DETERMINED AND DEVIATIONS WILL BE CAUSE FOR REJECTION. REMOVE ALL BURRS AND SHARP EDGES

NOTICE TO PERSONS RECEIVING THIS DRAWING

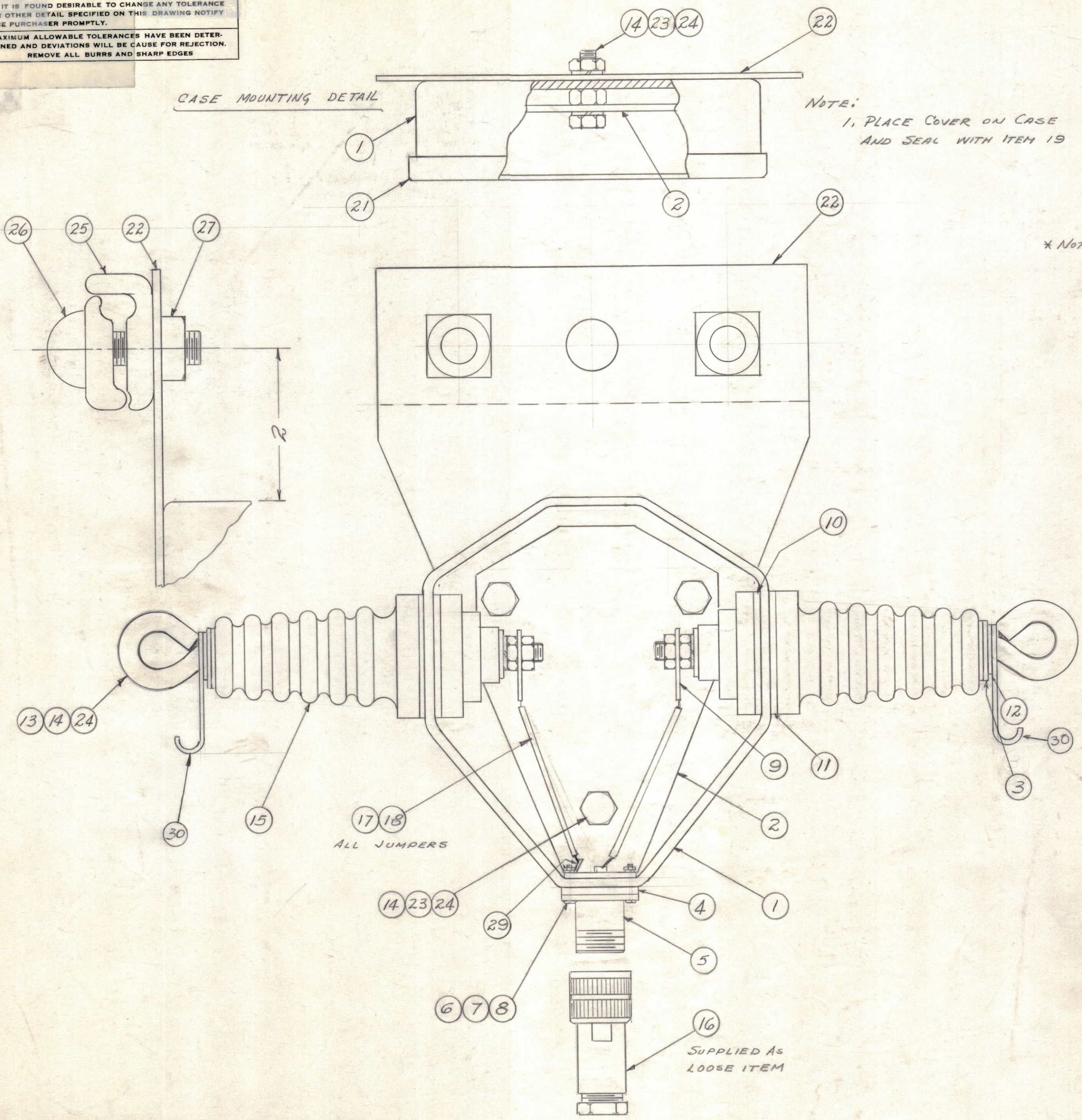
THE TECHNICAL MATERIEL CORPORATION claims proprietary right in the material disclosed hereon. This drawing is issued in confidence for engineering information only and may not be reproduced or used to manufacture anything shown hereon without permission from THE TECHNICAL MATERIEL CORPORATION to the user. This drawing is loaned for mutual assistance and is subject to recall at any time.

Property of:
THE TECHNICAL MATERIEL CORPORATION
MAMARONECK, NEW YORK

CASE MOUNTING DETAIL

NOTE:
1. PLACE COVER ON CASE AND SEAL WITH ITEM 19

* NOTE:
NAME PLATE ITEM 28 TO BE ATTACHED TO EXTERIOR OF COVER ITEM 21



2	30 MS 347	SERVICING, HOOK
1	29 TE-104-1	TERMINAL, LOCKING
1	28 NP-222-1	NAME PLATE, IDENTIFICATION *
2	27 SUPPLIED WITH CLAMP	NUT, SQUARE
2	26 SUPPLIED WITH CLAMP	BOLT
1	25 CU-124	CLAMP, SUSPENSION, CABLE
8	24 LWS25MRN	LOCKWASHER, SPLIT
3	23 SCHH2520BNI6	SCREW, MACHINE
1	22 MS-790	CASE, MTG. PLATE
1	21 PM-231	COVER

A-1437 B

X	20 BS-100	SOLDER, SOFT
X	19 GL-106	COMPOUND, POTTING
X	18 WL-100-3	WIRE BUS BAR
X	17 PX-104-1.066	INSULATION SLEEVING
1	16 UG-21 B/U	PLUG (LOOSE ITEM)
2	15 NS-107	INSULATOR, FEED-THRU
10	14 NTH2520BNI4	NUT, HEX. (8 SUPPLIED WITH ITEM 15; 2 REQ'D)
2	13 SC-149	BOLT, EYE
4	12 SUPPLIED WITH INSULATOR	WASHER, FLAT
2	11 GA-115	GASKET, NEOPRENE
2	10 SUPPLIED WITH INSULATOR	GASKET, CORK
2	9 TE-132	TERMINAL LUG
4	8 NTH0440BN8	NUT, HEX.
4	7 LWE04MRN	LOCKWASHER EXT.
4	6 SCBP0440BN8	SCREW, MACHINE
1	5 UG-58 A/U	RECEPTACLE
1	4 GA-106	GASKET
2	3 RY-113-1	GASKET NEOPRENE
1	2 MS-1302	TRANSFORMER MTG. PLATE
1	1 PM-390	CASE

REQ. ITEM	PART NO.	DESCRIPTION	SYMBOL
THE TECHNICAL MATERIEL CORP. MAMARONECK, NEW YORK			
FINAL ASSEMBLY			
DAC-10			
MATERIAL		WEIGHT PER PC.	
8/1/58 <i>abc</i>			
TYPE & TEMPER		DRAWN	
HEAT TREAT. SPEC.		ELEC. DES. APP.	
FINISH & SPEC. NO.		MECH. DES. APP.	
		CHECKED	
		FINAL APPROVAL	
A-1437 B			

B	ADD 17.30	1-10-73	20968	EE	EL	EL	
A	ITEM (13) WAS PM-228 HOWR UPDATED & STANDARDIZED	012-63	9267				
ISSUE	ITEM	CHANGED FROM	DATE	CN. NO.	DRAFTS	CHECKER	ENG. APP.
TOLERANCES		SCALE: <i>CR</i>					
ALL OTHERS	DEC. DIM. ± FRAC. DIM. ± ANGULAR DIM. ±	DRILL, PUNCH, COMMERCIAL STOCK SIZES AND MANUFACTURERS TOLERANCES ARE NOT INCLUDED.					

1	DAC-10	PROJECT NO.	ASS'Y. NO.	DATE
REQ. PER UNIT	MODEL			8/1/58
USED ON				