

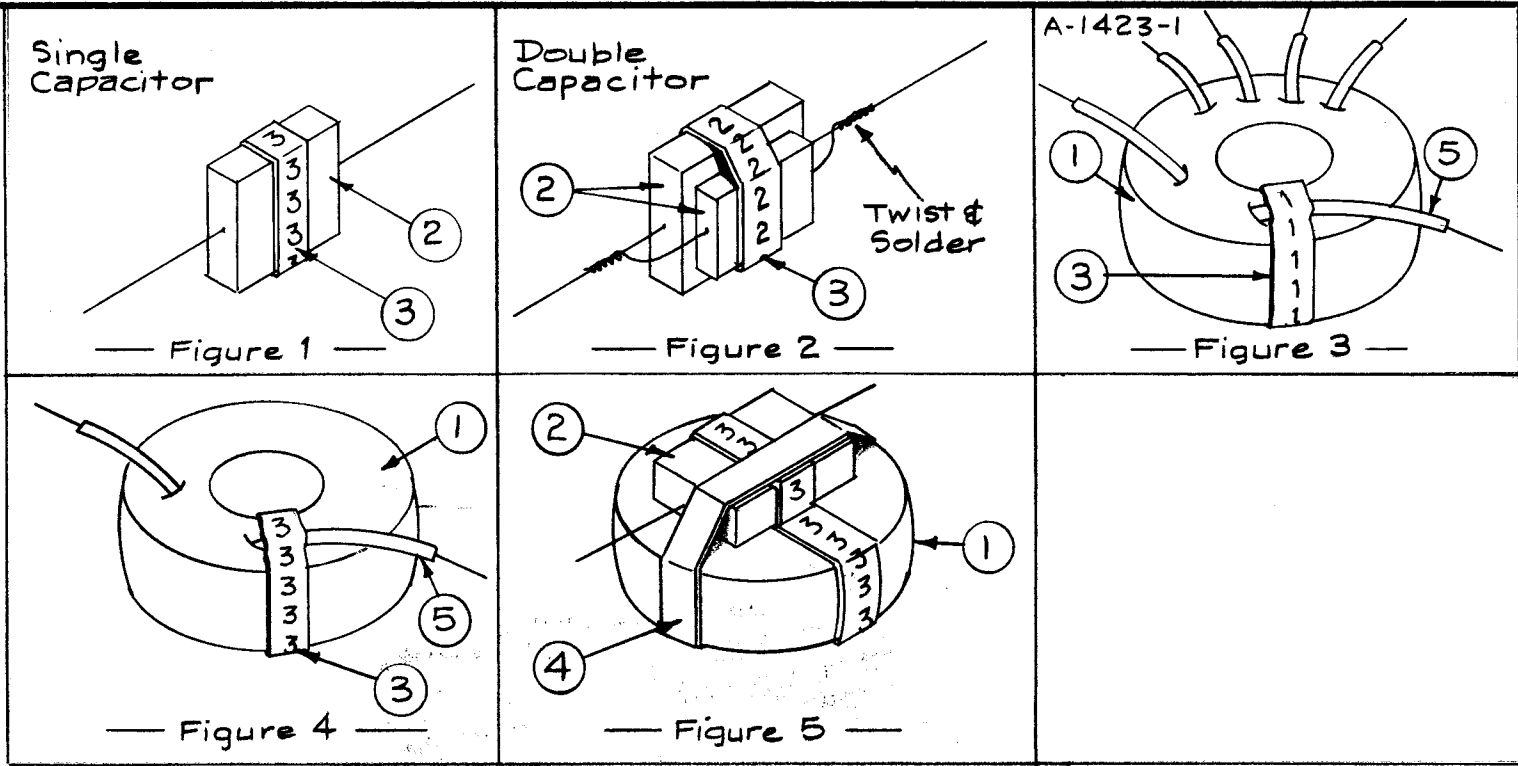
A-1423

TMC PART NO.	MARKER NO. (ITEM 3)	REACTOR (ITEM 1)	CAPACITOR (ITEM 2)	RES. (KCS.)	TOL. (CPS)
A-1423-1	1	CL-202-1	CM30E332G	15.40	± 20
A-1423-2	2	CL-202-2	CM20E 431G and CM20E 431G	19.00	± 20
A-1423-3	3	CL-202-3	CM30E 622G	15.62	± 20
A-1423-4	4	CL-202-4	CM30E242G	17.70	± 20
A-1423-5	5	CL-202-5	CM30E622G	15.85	± 20
A-1423-6	6	CL-202-6	CM30E332G	17.40	± 20
A-1423-7	7	CL-202-7	CM30E682G	14.85	± 20
A-1423-8	8	CL-202-8	CM30E362G	12.40	± 20
A-1423-9	9	CL-202-9	CM30E362G	13.83	± 20
A-1423-10	10	CL-202-10	None	None	None

* Markers may be any consecutive order (1 to 9 ; 20 to 29 ; etc.)

ASSEMBLY PROCEDURE

1. Obtain resonance in accordance with TMC Spec. S-206.
Note- Use black leads when resonating A-1423-1.
2. Place sleeving and markers (item 3) on coil and capacitor as shown in Figures 1, 2, 3, & 4.
3. Tape the toroid and capacitor securely together. (Fig. 5)
4. This Assy. must not be separated until the final Ass'y. of FX-154. (A-1424)



NOTICE TO PERSONS RECEIVING THIS DRAWING

THE TECHNICAL MATERIEL CORPORATION claims proprietary right in the material disclosed hereon. This drawing is issued in confidence for engineering information only and may not be reproduced or used to manufacture anything shown hereon without permission from THE TECHNICAL MATERIEL CORPORATION to the user. This drawing is loaned for mutual assistance and is subject to recall at any time.

Property of:
THE TECHNICAL MATERIEL CORPORATION
MAMARONECK, NEW YORK

REQ. ITEM	PART NO.	DESCRIPTION	SYMBOL
X 6	BS-100	Solder, Soft	
X 5	PX-104-1-.022	Insulation, Sleeving	BIK.
X 4	TA-102-2	Tape, Paper	
* X 3	LA-101	Tape, Wire Marker (1 thru 10)	
1 ea.	See Chart	Capacitor, Fixed	
1 ea.	See Chart	Reactor, Toroidal	
<p align="center">THE TECHNICAL MATERIEL CORP. MAMARONECK, NEW YORK</p> <p align="center">COIL & CAPACITOR ASS'Y. (FX-154)</p>			
TYPE & TEMPER.	HEAT TREAT. SPEC.	DRAWN	CHECKED
FINISH & SPEC. NO.	ELEC. DES. APP.	MECH. DES. APP.	

ISSUE ITEM	CHANGED FROM	DATE	CH. NO.	DRAFTS	CHECKER	ENG. APP.
TOLERANCES						
SCALE: $\frac{1}{16}$ " = 1"						
DEC. DIM. ± FRAC. DIM. ± ANGULAR DIM. ±						
MAXIMUM ALLOWABLE TOLERANCES HAVE BEEN DETERMINED AND ANY DEVIATIONS WILL BE CAUSE FOR REJECTION. REMOVE ALL BURRS AND SHARP EDGES						

1 Each	FX-154	SBE-1	A-1424	6-4-57
REQ. PER UNIT	MODEL	PROJECT NO.	ASS'Y. NO.	DATE

USED ON

A-1423