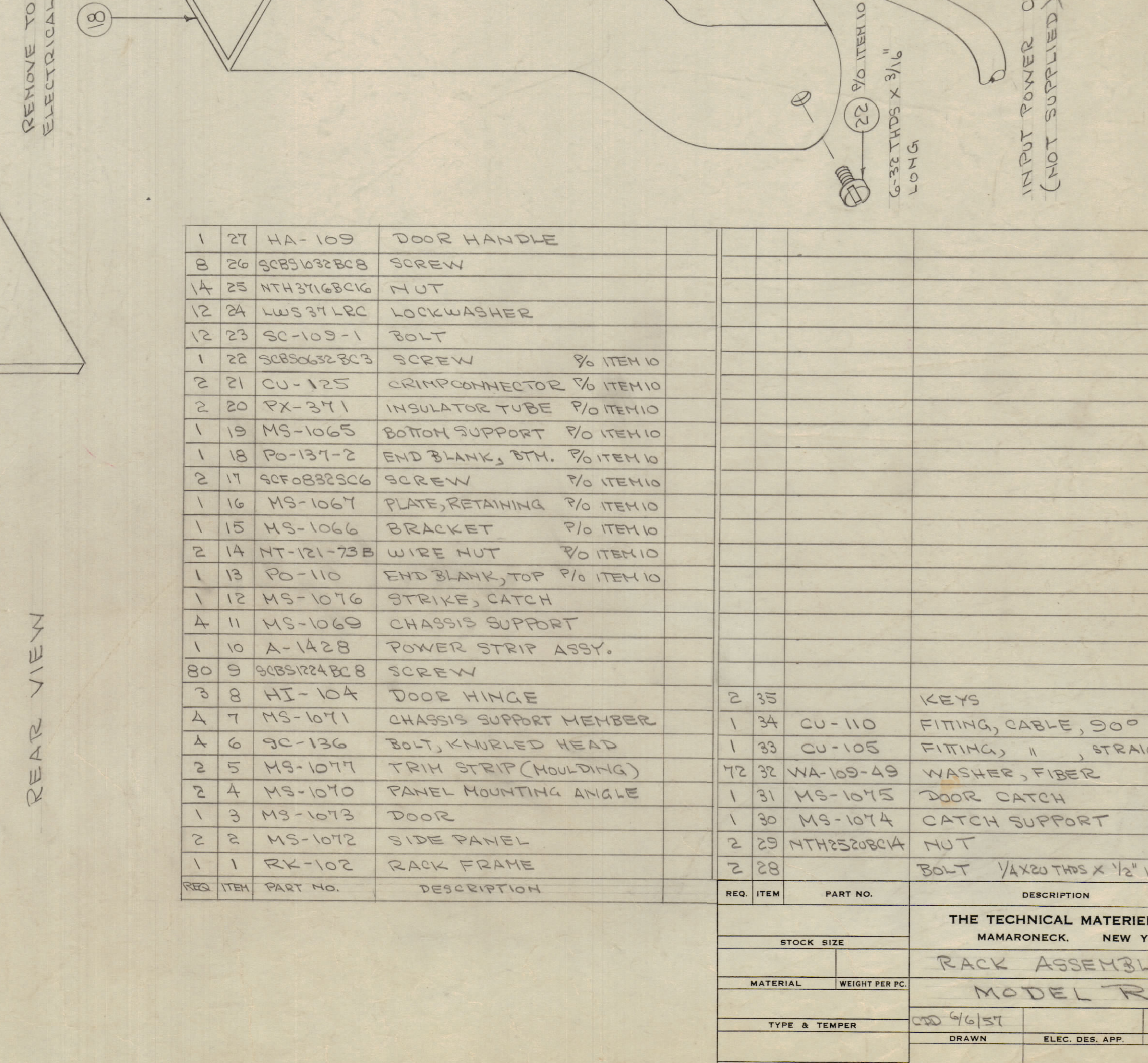
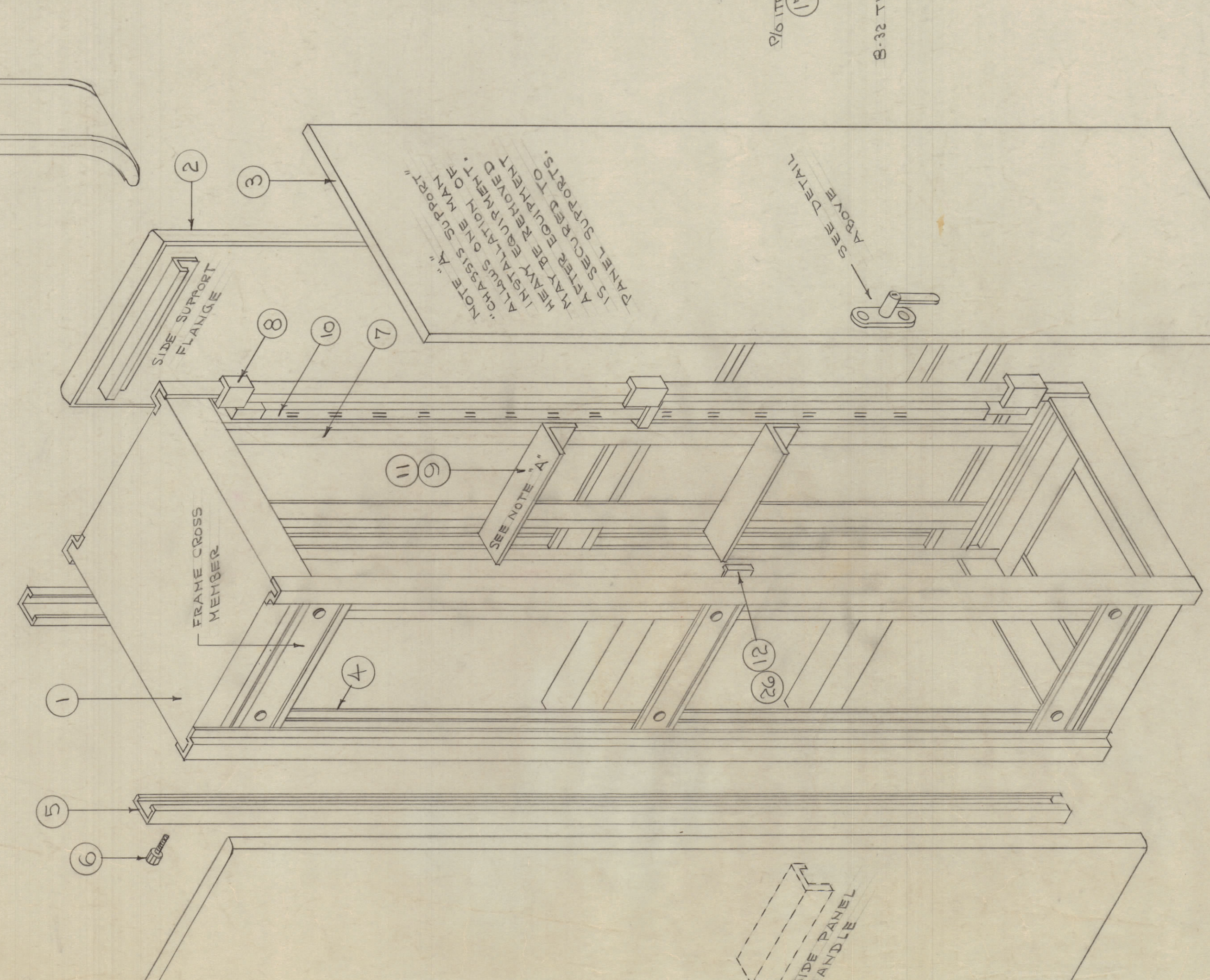
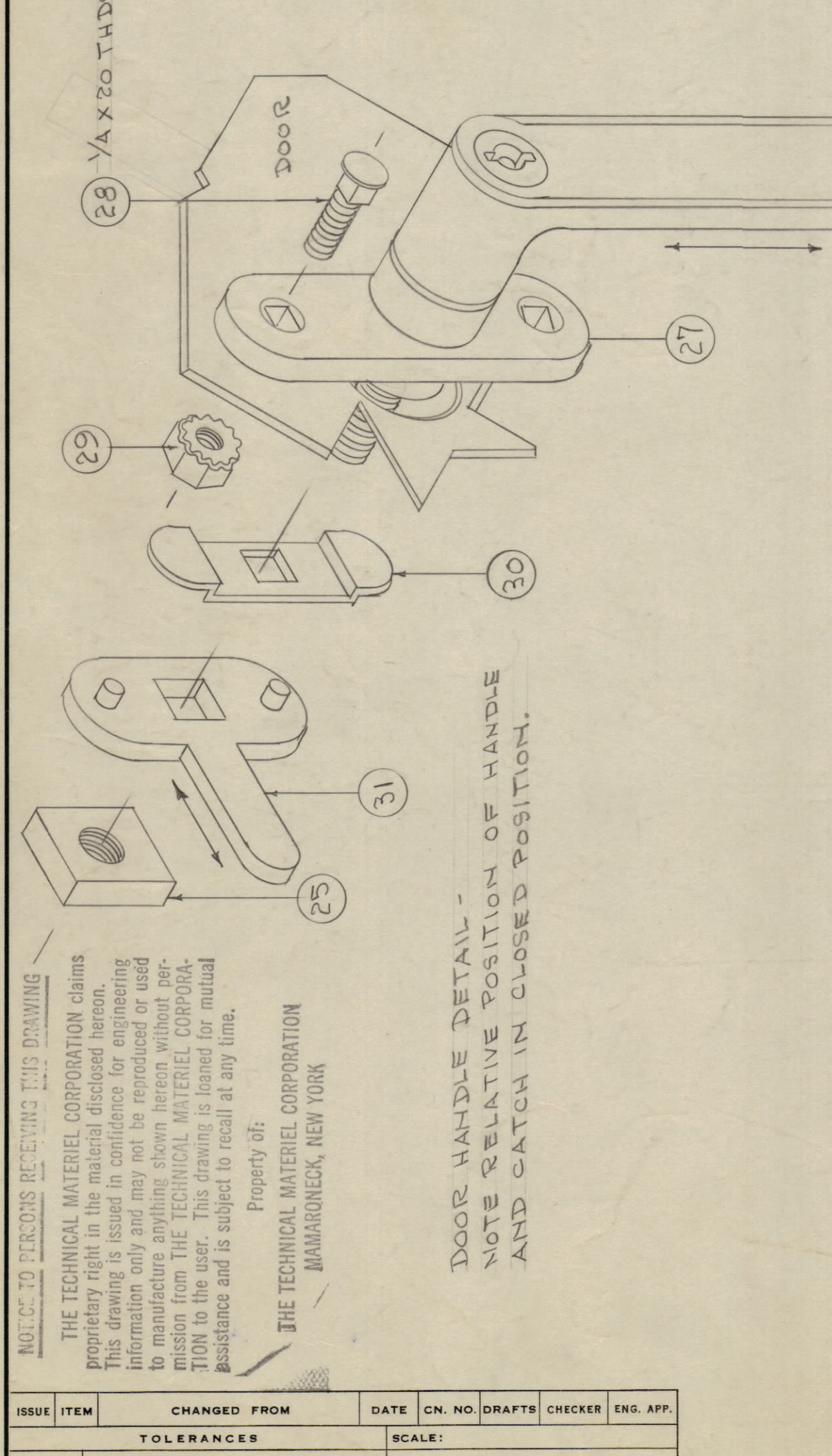
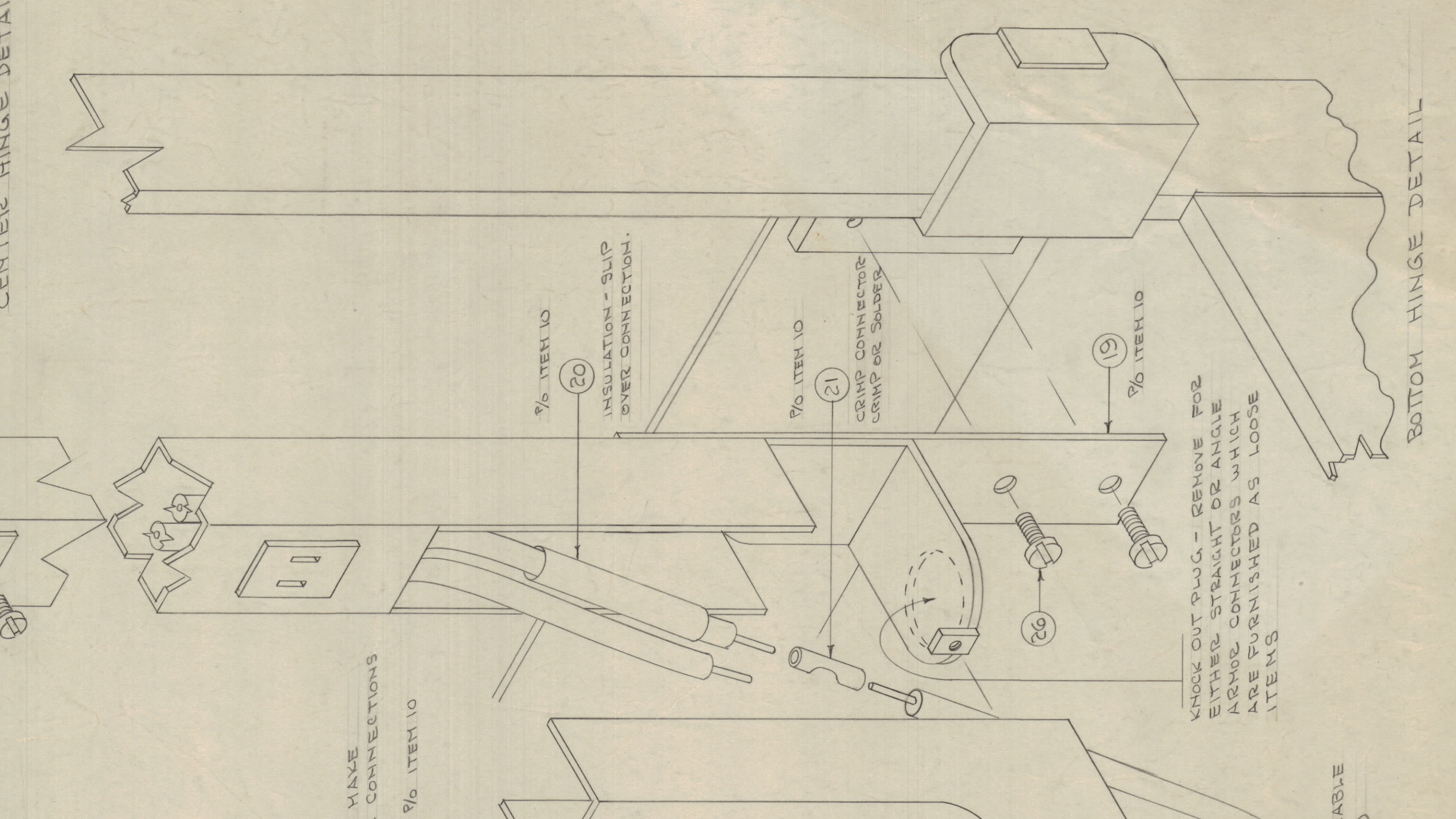
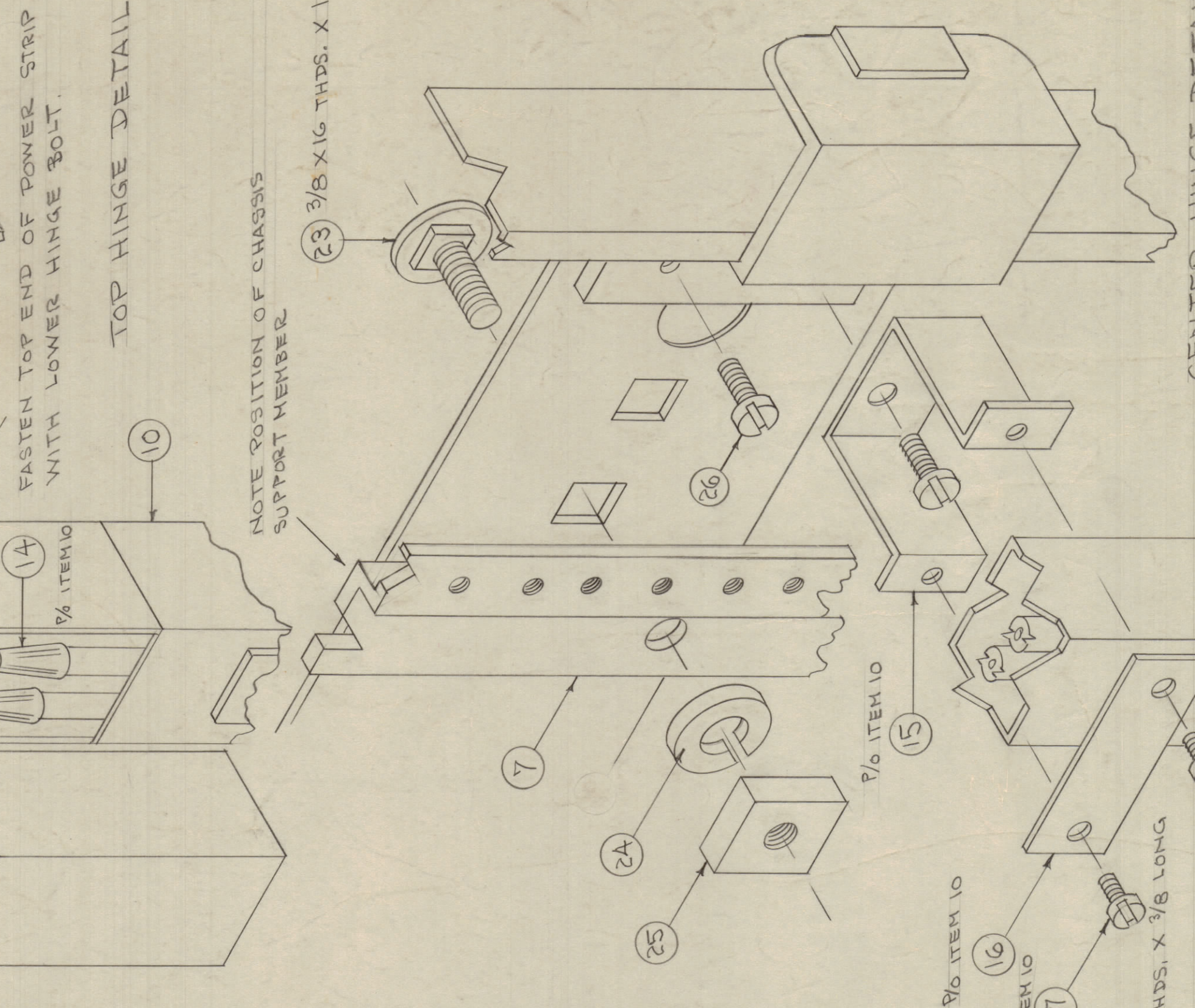
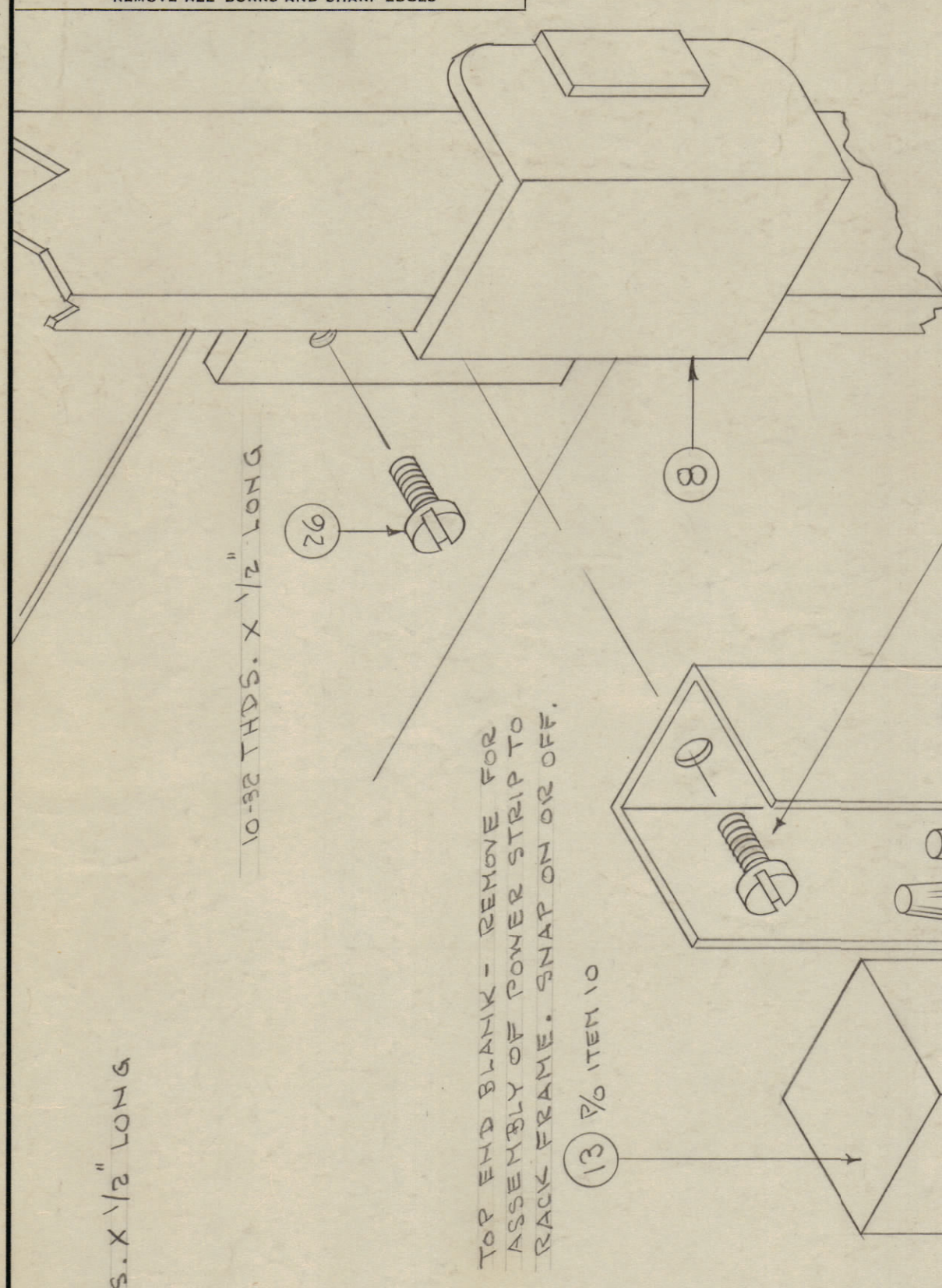


IF IT IS FOUND DESIRABLE TO CHANGE ANY TOLERANCE OR OTHER DETAIL SPECIFIED ON THIS DRAWING NOTIFY THE PURCHASER PROMPTLY.
 MAXIMUM ALLOWABLE TOLERANCES HAVE BEEN DETERMINED AND DEVIATIONS WILL BE CAUSE FOR REJECTION.
 REMOVE ALL BURRS AND SHARP EDGES



REQ. ITEM	PART NO.	DESCRIPTION	SYMBOL
1	27	HA-109	DOOR HANDLE
8	26	SCBS032BC8	SCREW
14	25	NTH37168C16	NUT
12	24	LWS37LRC	LOCKWASHER
12	23	SC-109-1	BOLT
1	22	SCBS032BC3	SCREW % ITEM 10
2	21	CU-125	CRIMP CONNECTOR % ITEM 10
2	20	PX-241	INSULATOR TUBE % ITEM 10
1	19	MS-1065	BOTTOM SUPPORT % ITEM 10
1	18	PO-137-2	END BLANK, BTH. % ITEM 10
2	17	SCF0882SC6	SCREW % ITEM 10
1	16	MS-1067	PLATE, RETAINING % ITEM 10
1	15	MS-1066	BRACKET % ITEM 10
2	14	NT-121-73B	WIRE NUT % ITEM 10
1	13	PO-110	END BLANK, TOP % ITEM 10
1	12	MS-1076	STRIKE, CATCH
4	11	MS-1069	CHASSIS SUPPORT
1	10	A-1428	POWER STRIP ASSY.
80	9	SCBS124BC8	SCREW
3	8	HJ-104	DOOR HINGE
A	7	MS-1071	CHASSIS SUPPORT MEMBER
A	6	9C-136	BOLT, KNURLED HEAD
2	5	MS-1077	TRIM STRIP (MOULDING)
2	4	MS-1070	PANEL MOUNTING ANGLE
1	3	MS-1073	DOOR
2	2	MS-1072	SIDE PANEL
1	1	RK-102	RACK FRAME
2	28		BOLT 1/4 X 20 THDS X 1/2" LONG
2	33		KEYS
1	34	CU-110	FITTING, CABLE, 90°
1	33	CU-105	FITTING, " , STRAIGHT
72	32	WA-109-49	WASHER, FIBER
1	31	MS-1074	DOOR CATCH
1	30	MS-1074	CATCH SUPPORT
2	29	NTH3208C14	NUT

STOCK SIZE	MATERIAL	WEIGHT PER PC.	TYPE & TEMPER	HEAT TREAT. SPEC.	FINISH & SPEC. NO.
THE TECHNICAL MATERIEL CORP. MAMARONECK, NEW YORK					
RACK ASSEMBLY MODEL RAK-1					
DRAWN			ELEC. DES. APP.		MECH. DES. APP.
CHECKED			FINAL APPROVAL		SA
A-1421					

ISSUE	ITEM	CHANGED FROM	DATE	CN. NO.	DRAFTS	CHECKER	ENG. APP.
TOLERANCES							
ALL DEC. DIM. ±		SCALE:		DRILL PUNCH, COMMERCIAL STOCK			
OTHERS FRAC. DIM. ±				SIZES AND MANUFACTURERS			
ANGULAR DIM. ±				TOLERANCES ARE NOT INCLUDED.			