

IF IT IS FOUND DESIRABLE TO CHANGE ANY TOLERANCE OR OTHER DETAIL SPECIFIED ON THIS DRAWING NOTIFY THE PURCHASER PROMPTLY.

MAXIMUM ALLOWABLE TOLERANCES HAVE BEEN DETERMINED AND DEVIATIONS WILL BE CAUSE FOR REJECTION. REMOVE ALL BURRS AND SHARP EDGES

NOTICE TO PERSONS RECEIVING THIS DRAWING

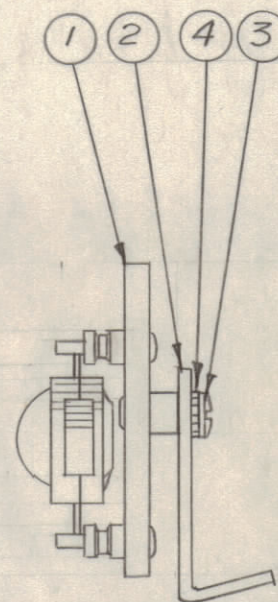
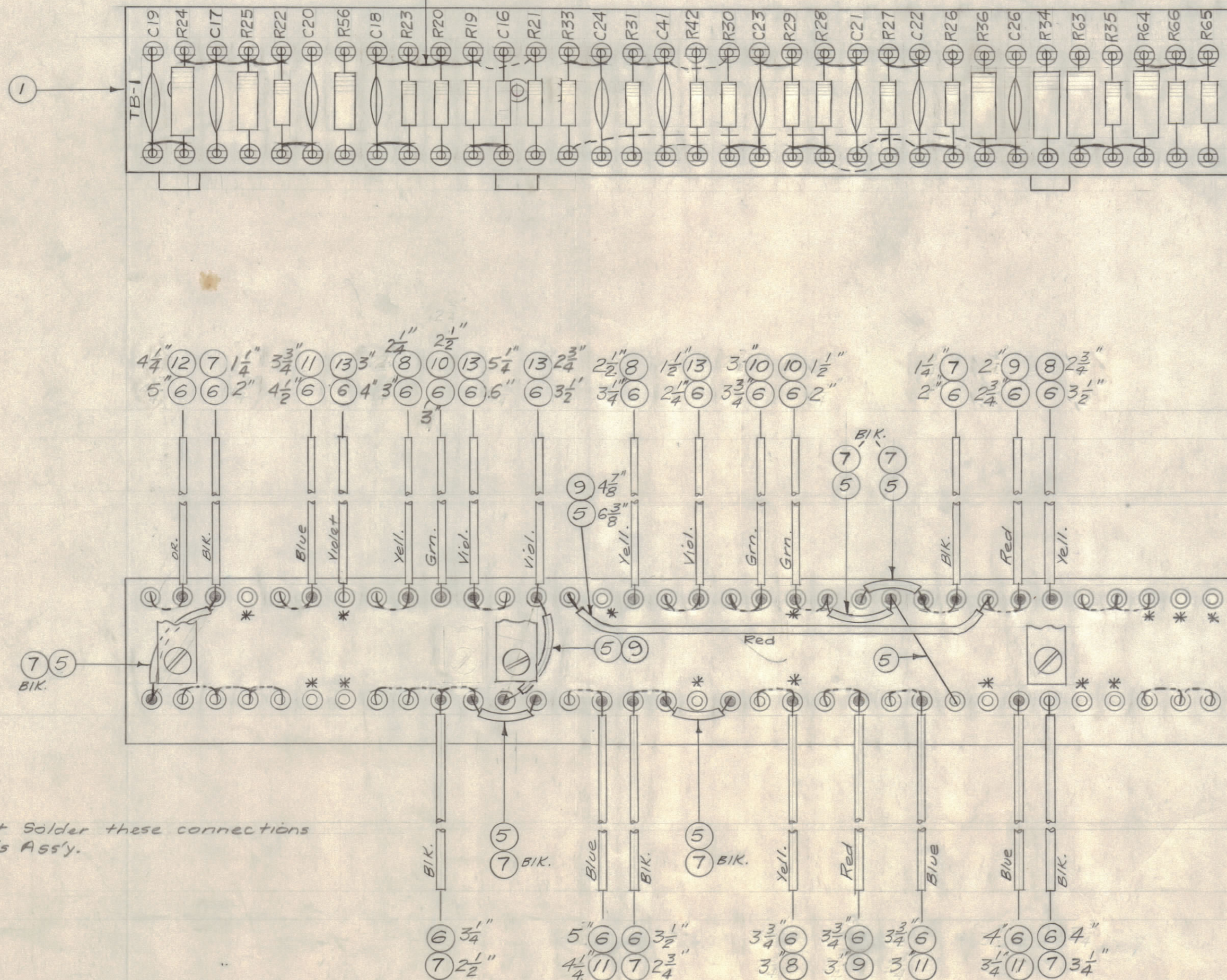
THE TECHNICAL MATERIEL CORPORATION claims proprietary right in the material disclosed herein. This drawing is issued in confidence for engineering information only and may not be reproduced or used to manufacture anything shown herein without permission from THE TECHNICAL MATERIEL CORPORATION to the user. This drawing is loaned for mutual assistance and is subject to recall at any time.

Property of:

THE TECHNICAL MATERIEL CORPORATION
MAMARONECK, NEW YORK

Stamping to be 1/8" high black Gothic. Stamp before ass'y. of components.

5 All Jumpers



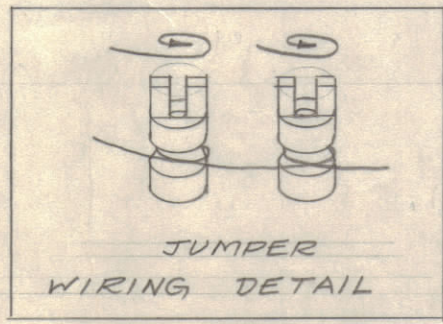
1	36	RC42GF102K	Resistor, Fixed, Comp.	R36
1	35	RC42GF563K	Resistor, Fixed, Comp.	R56
X	34	BS-100	Solder, Soft	
1	33	RC20GF471K	Resistor, Fixed, Comp.	R65
1	32	RC42GF821K		R63
1	31	RC42GF152K		R64
1	30	RC20GF392K		R35
1	29	RC42GF561K		R34
2	28	RC20GF222K		R31, R42
1	27	RC20GF474K		R30
1	26	RC20GF224K		R29
2	25	RC20GF225K		R28, R27
1	24	RC20GF123K		R26
1	23	RC30GF103K		R25
1	22	RC42GF473K		R24
2	21	RC20GF121K		R66, R23

A-1389 B

2	20	RC20GF104K		R33, R22
2	19	RC20GF103K		R19, R20
1	18	RC20GF203K	Resistor, Fixed, Comp.	R21
5	17	CC-100-9	Capacitor, Fixed, Ceramic	C21, 22, 23, 24, 28
5	16	CC-100-16		(Deleted)
1	15			
1	14	CC-101-3		C16
9 3/4"	13	PX-104-9-.034	Insulation, Sleeving (Size 20)	Violet
4 1/4"	12	-8-		Orange
14 1/4"	11	-6-		Blue
6 1/2"	10	-4-		Green
17"	9	-3-		Red
10 1/2"	8	-2-		Yellow
15 1/4"	7	PX-104-1-.034	Insulation, Sleeving (Size 20)	Black
78"	6	WL-100-7	Wire, Buss (Size 22)	
X	5	WL-100-8	Wire, Buss (Size 24)	
3	4	LWE06MRC	Lockwasher, Ext.	
3	3	SCBS0632BC6	Screw, Machine	
3	2	MS-1027	Bracket, Angle, T.B.	
1	1	A-1365	Terminal Board No.1 Sub-Ass'y.	

C17
C18
C19
C20
C41

B	6	Jump from R33 to R36 Added					
	5	JUMPER DETAIL ADDED					
	4	Asterik Note Added					
	3	Jumper from R27 to R26 Added	4/17/57	2	16	P.L.K.	A.J.J.
	2	R56 Lead Added					
	1	1/2" Added to all Leads					
	3	R36 DELE. FROM ITEM 31 & ADDED AS ITEM 36					
A	2	ITEM 19 WAS RC20GF473K R19 CHGD. FROM ITEM 18 to 19	4/5/57	1	16	P.L.K.	A.J.J.
	1	LONG JUMPER ADDED, ITEM 9 QUAN. WAS 4 1/2					



ISSUE	ITEM	CHANGED FROM	DATE	CN. NO.	DRAFTS	CHECKER	ENG. APP.
TOLERANCES		SCALE:					
ALL OTHERS	DEC. DIM. ± FRAC. DIM. ± ANGULAR DIM. ±	DRILL, PUNCH, COMMERCIAL STOCK SIZES AND MANUFACTURERS TOLERANCES ARE NOT INCLUDED.					

1	MSR-1			3-4-57
REQ PER UNIT	MODEL	PROJECT NO.	ASSY. NO.	DATE
				USED ON

REQ. ITEM	PART NO.	DESCRIPTION	SYMBOL
THE TECHNICAL MATERIEL CORP. MAMARONECK, NEW YORK			
STOCK SIZE			
TERMINAL BOARD NO.1			
MATERIAL WEIGHT PER PC. FINAL ASSY. & STAMPING			
TYPE & TEMPER			
DRAWN		ELEC. DES. APP.	MECH. DES. APP.
HEAT TREAT. SPEC.		CHECKED H.A.J.J.	
FINISH & SPEC. NO. A-1389 B			