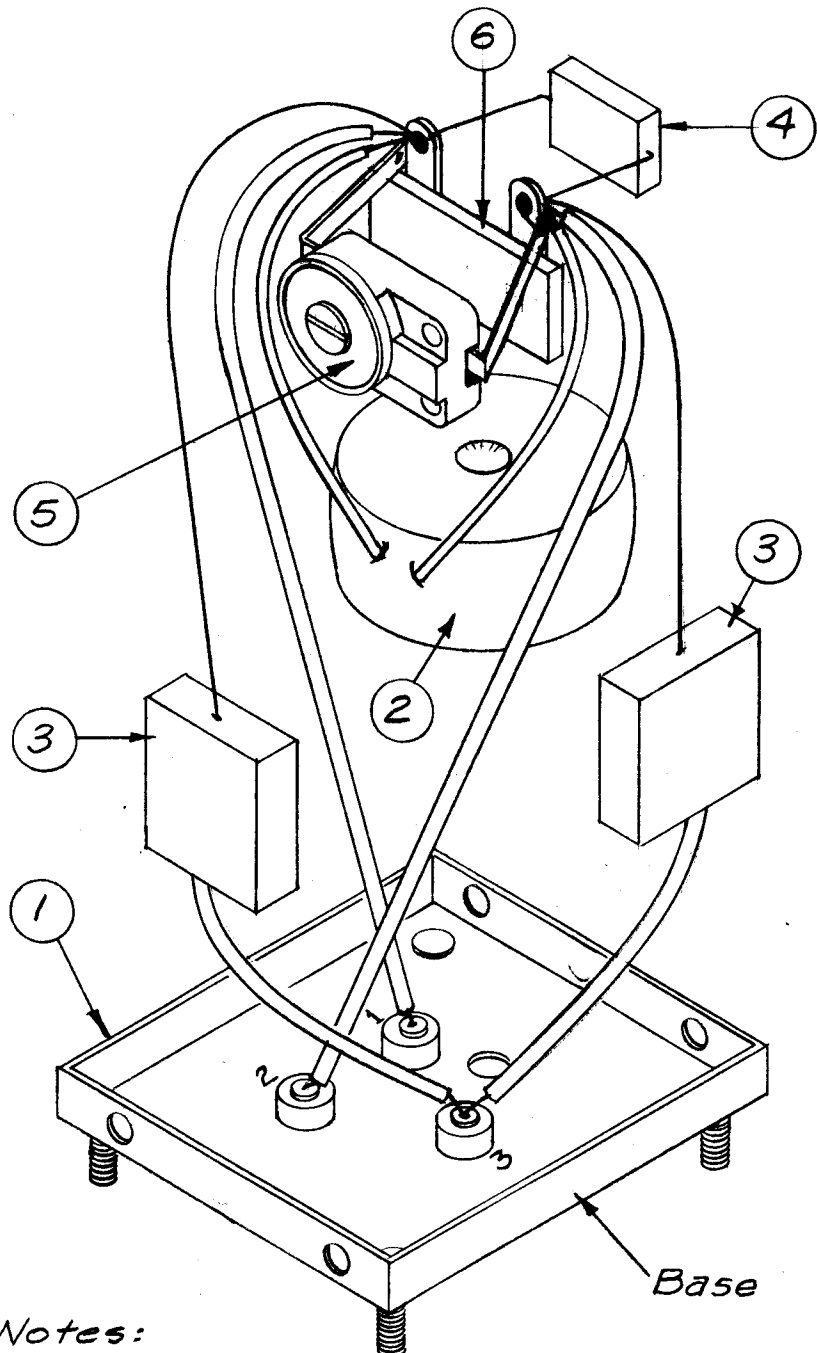


A 1380

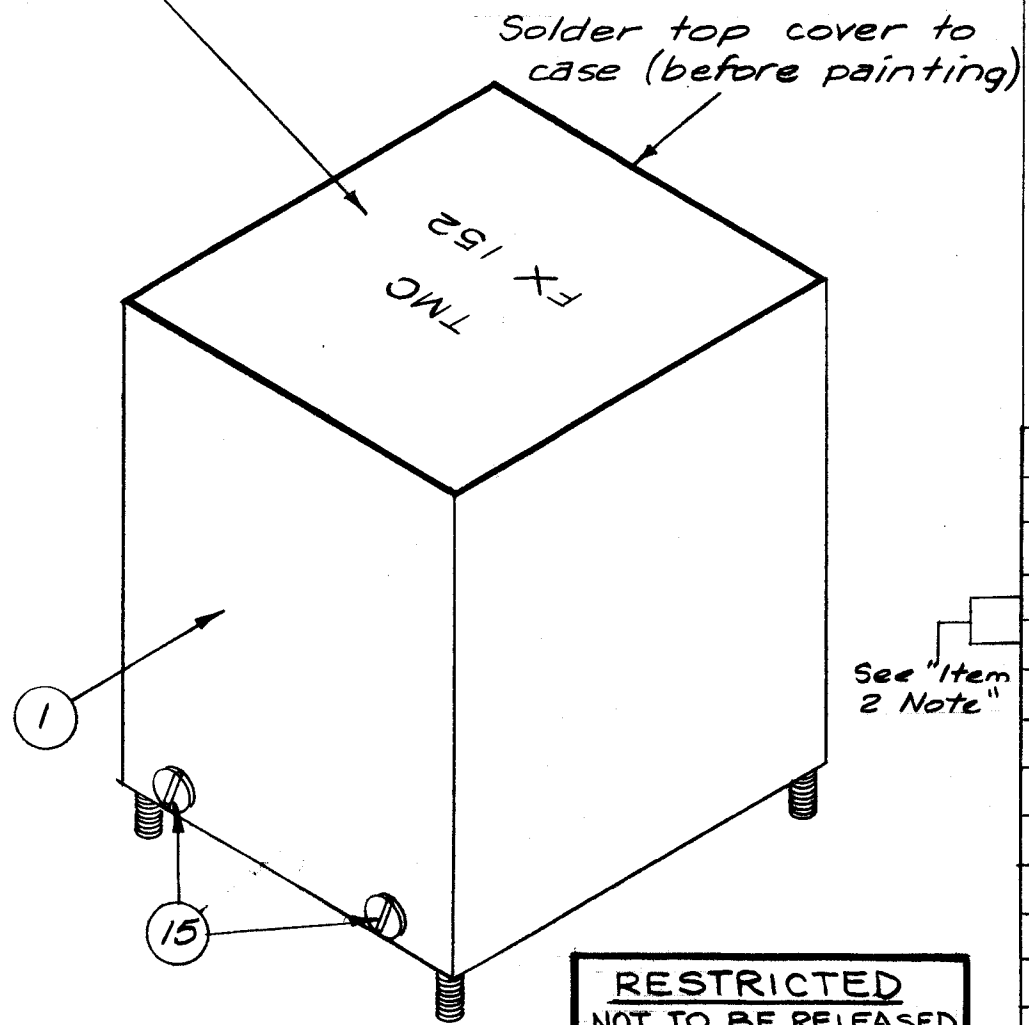
See Detail "A" for coil mounting.



- Notes:
1. All Jumpers to be item 7.
  2. All Sleeving to be item 8. (cut lengths as required)
  3. Solder all connections - Clean outside terminals.
  4. Test in accordance with S 325.

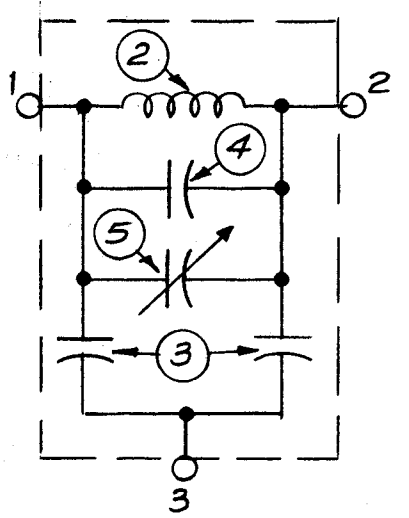
ITEM 2 NOTE:  
 Item 2 may be CL 117 (Mfg. outside TMC), or A 1530 (Mfg. by TMC).  
 When using CL 117, items 7 & 8 will be used as jumpers. When using A 1530, connecting leads will be part of the coil.  
 Items 12 & 13 will be deleted when CL 117 is used.

Stamp as shown, 1/8 high black Gothic.  
 (after painting)

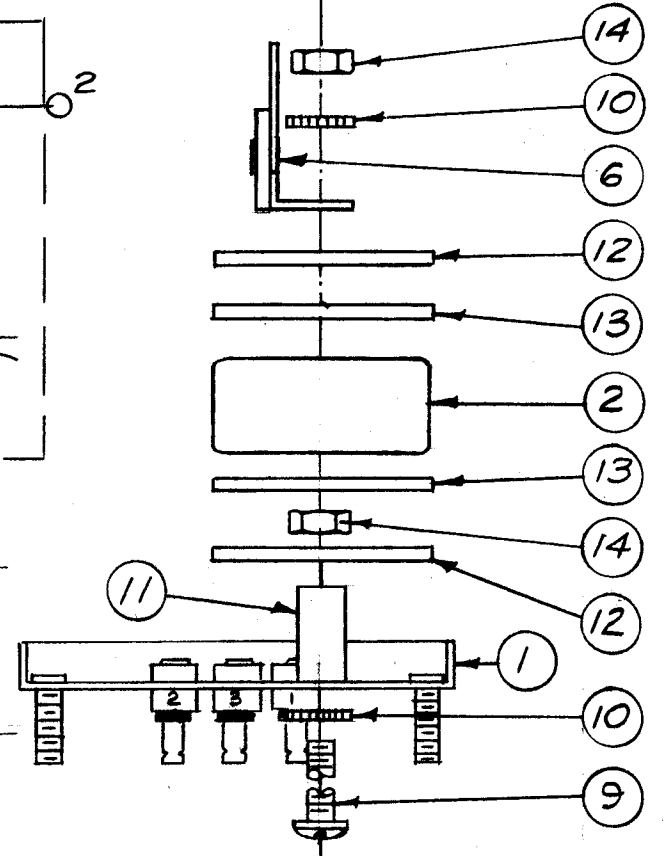


**RESTRICTED**  
 NOT TO BE RELEASED  
 WITHOUT  
 AUTHORIZATION

- FINISH NOTE -
1. Solder top to case and paint  
 Finish - Degrease  
 5114 Zinc Chromate Primer  
 5115 Smooth Grey Enamel
  2. Assemble case to base.



Schematic



DETAIL "A"

REQ.	ITEM	PART NO.	DESCRIPTION	SYMBOL
X	16	B5 100	Solder, Soft	
A	15	SFB04405C4	Screw, Thd. Cutting	
	2	NTH0632BC8	Nut, Hex.	
	2	GA 140-IN4	Gasket, Neoprene	
	2	FW 100-2 AL	Washer, Flat, Special	
	1	TE 140	Spacer (5/8" long)	
	2	LWE06MRC	Lockwasher, Ext.	
	1	SCBS0632BC28	Screw, Machine	
X	8	PX104-4-034	Insulation, Sleeving	Grn.
X	7	WL 100-7	Wire, Buss (#22)	
	1	TM 117-10	Terminal Strip	
	1	CV11C450	Capacitor, Variable	
	1	CM20C270J	Capacitor, Fixed, Mica	
	2	CM30D242G	Capacitor, Fixed, Mica	
	1	2	See "ITEM 2 Note"	Coil
	1	BX 150	Case & Covers	

REVISION	DATE	DESCRIPTION	BY	APP.
D	11-3-64	RESTRICTED NOTE ADDED	ASB	[Signature]
C	4/23/58	TE-140 WAS TE-117-3	JHR	[Signature]
B	4/16/58	NOTE 4 Added A-1530 WAS A-1482	P.P.K.	[Signature]
A	11/1/57	REDWN - REVISED MECHANICALLY	P.P.K.	[Signature]

TOLERANCES		SCALE:	
DEC. DIM. ±		MAXIMUM ALLOWABLE TOLERANCES HAVE BEEN DETERMINED AND ANY DEVIATIONS WILL BE CAUSE FOR REJECTION. REMOVE ALL BURRS AND SHARP EDGES	
FRAC. DIM. ±			
ANGULAR DIM. ±			

THE TECHNICAL MATERIEL CORP.	MAMARONECK, NEW YORK
<b>FILTER, LOW-PASS ASS'Y (FX 152)</b>	
DATE	11-11-57
TYPE & TEMPER	HEAT TREAT. SPEC.
SEE NOTE	RE-DRAWN
FINISH & SPEC. NO.	ELEC. DES. APP. MECH. DES. APP.