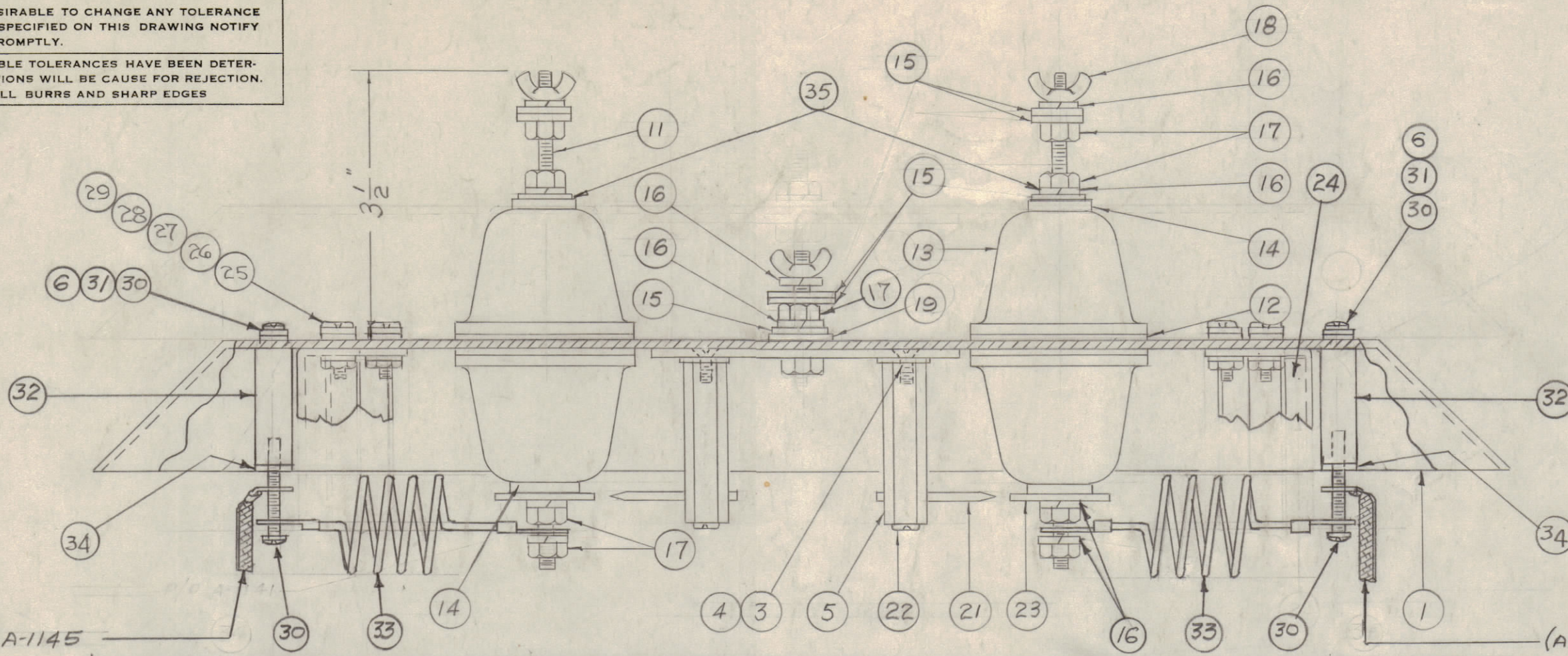


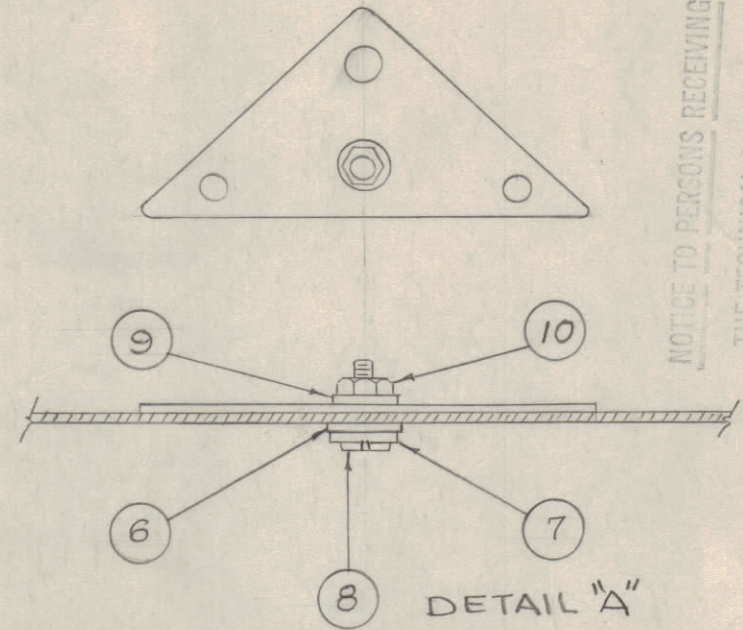
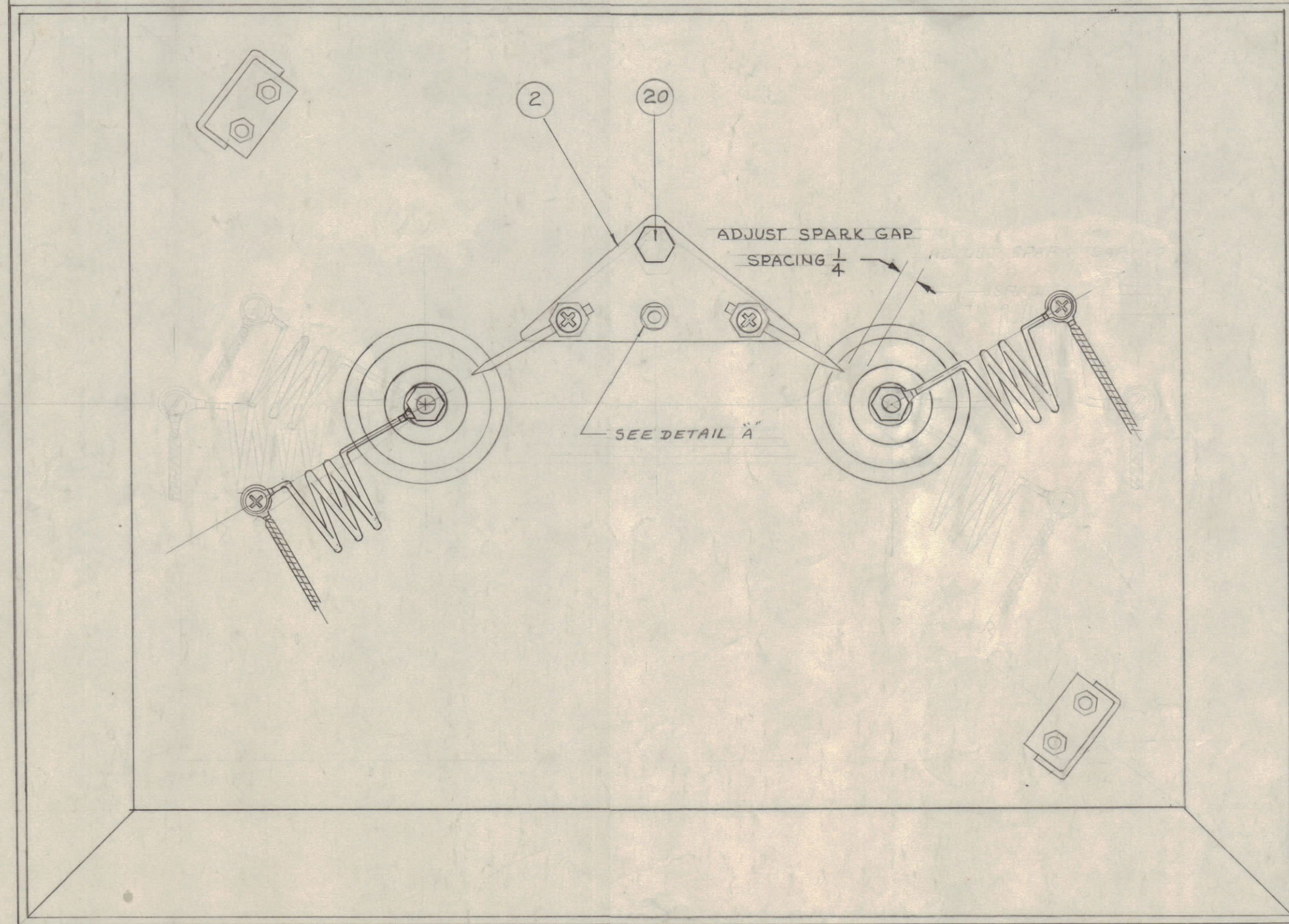
IF IT IS FOUND DESIRABLE TO CHANGE ANY TOLERANCE OR OTHER DETAIL SPECIFIED ON THIS DRAWING NOTIFY THE PURCHASER PROMPTLY.

MAXIMUM ALLOWABLE TOLERANCES HAVE BEEN DETERMINED AND DEVIATIONS WILL BE CAUSE FOR REJECTION. REMOVE ALL BURRS AND SHARP EDGES



(A-1143) P/O A-1145

(A-1143) P/O A-1145



NOTICE TO PERSONS RECEIVING THIS DRAWING  
 THE TECHNICAL MATERIEL CORPORATION claims proprietary right in the material disclosed herein. This drawing is issued in confidence for engineering information only and may not be reproduced or used to manufacture anything shown herein without permission from THE TECHNICAL MATERIEL CORPORATION to the user. This drawing is loaned for mutual assistance and is subject to recall at any time.

Property of:  
 THE TECHNICAL MATERIEL CORPORATION  
 MAMARONECK, NEW YORK

2	35	FW100-17	WASHER, FLAT
2	34	WA-109-52	WASHER, FIBRE
2	33	A-1373	COIL ASS'Y., RF.
2	32	N53W0216	INSULATOR, STANDOFF
2	31	FW08HBN	WASHER, FLAT
4	30	SCBP0832BN7	SCREW, MACHINE
4	29	NTH1032BN10	NUT, HEX
4	28	LWE10MRN	WASHER, LOCK
4	27	FW10HRN	" , FLAT
4	26	GA-131-2	GASKET
4	25	SCBP1032BN8	SCREW, MACHINE
1	24	A-1145	RESISTOR, MAIN SUPPORT
2	23	MS-764	SPARK GAP, CONTACT
2	22	SCBP0832BN4	SCREW, MACHINE

A-1378 D

2	21	PM-381	SPARK ROD
1	20	SCHH2520BNG	BOLT, HEX.
1	19	GA-131-1	NEOPRENE GASKET
3	18	NT-110-2520BN	WING, NUT
9	17	NTH2520BN14	NUT, HEX.
10	16	LWS25MRN	LOCKWASHER SPLIT
7	15	FW25HBN	FLAT WASHER
4	14	RY-112	NEOPRENE GASKET
4	13	NS-115	INSULATOR, CAP
4	12	GA-126	NEOPRENE, GASKET
2	11	SM-134	STUD
1	10	NTH0632BN10	NUT
1	9	LWE06MRN	LOCKWASHER
1	8	SCBP0632BN10	SCREW, MACHINE
1	7	FW06HBN	FLAT WASHER
3	6	GA-131-3	NEOPRENE, GASKET
2	5	PM-380	SPARK, POST
2	4	LWE08MRN	LOCKWASHER, EXT.
2	3	SCFP0832BN8	FLAT HEAD SCREW
1	2	MS-763	SPARK GAP PLATE
1	1	PX-357	COVER, CASE

REQ. ITEM	PART NO.	DESCRIPTION	SYMBOL
<b>THE TECHNICAL MATERIEL CORP.</b>			
MAMARONECK, NEW YORK			
STOCK SIZE			
COVER ASSEMBLY			
MATERIAL		WEIGHT PER PC.	
		TER-3500	
TYPE & TEMPER			
DRAWN		ELEC. DES. APP.	
V6 2-18-57		AMB	
HEAT TREAT. SPEC.			
CHECKED		FINAL APPROVAL	
		A-1378 D	
FINISH & SPEC. NO.			

D	1	QTY. ITEM 15 WAS 9	4-14-66	16092	CDL	gcb	gcb
C	1	ITEMS 34 & 35 ADDED	4-16-63	8788			
B	1	HARDWARE CLARIFIED					
A	1	PIVOT SPRING MOVED TO AGREE WITH DETAIL PX 357	5-17-60	2282	CS	gcb	gcb
A	1	SCBP0832BN4 WAS SCBP0632BN4	2-26-57	1	SC		

ISSUE	ITEM	CHANGED FROM	DATE	CN. NO.	DRAFTS	CHECKER	ENG. APP.
TOLERANCES							
SCALE:							
ALL OTHERS	DEC. DIM. ±	DRILL, PUNCH, COMMERCIAL STOCK					
	FRAC. DIM. ±	SIZES AND MANUFACTURERS					
	ANGULAR DIM. ±	TOLERANCES ARE NOT INCLUDED.					

1	TER-3500		A-1225	1-26-56
REQ PER UNIT	MODEL	PROJECT NO.	ASS'Y. NO.	DATE
USED ON				