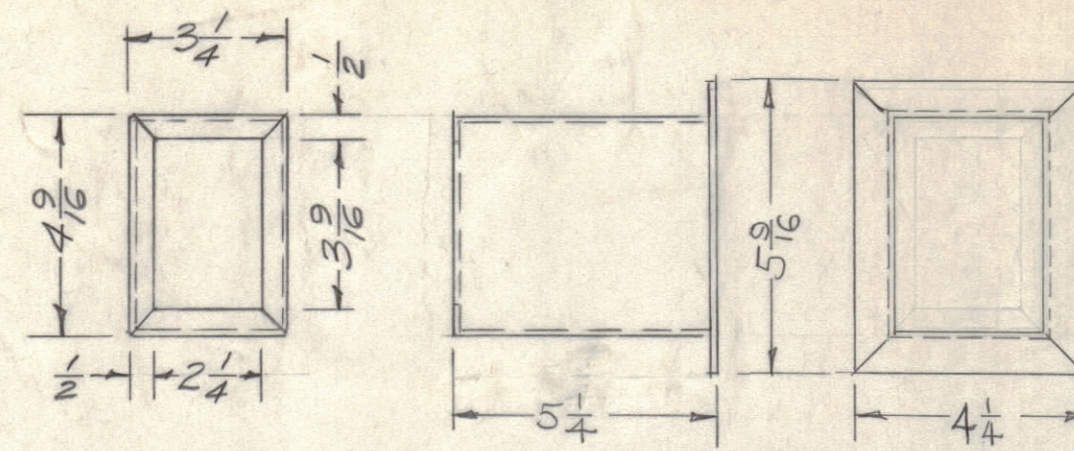
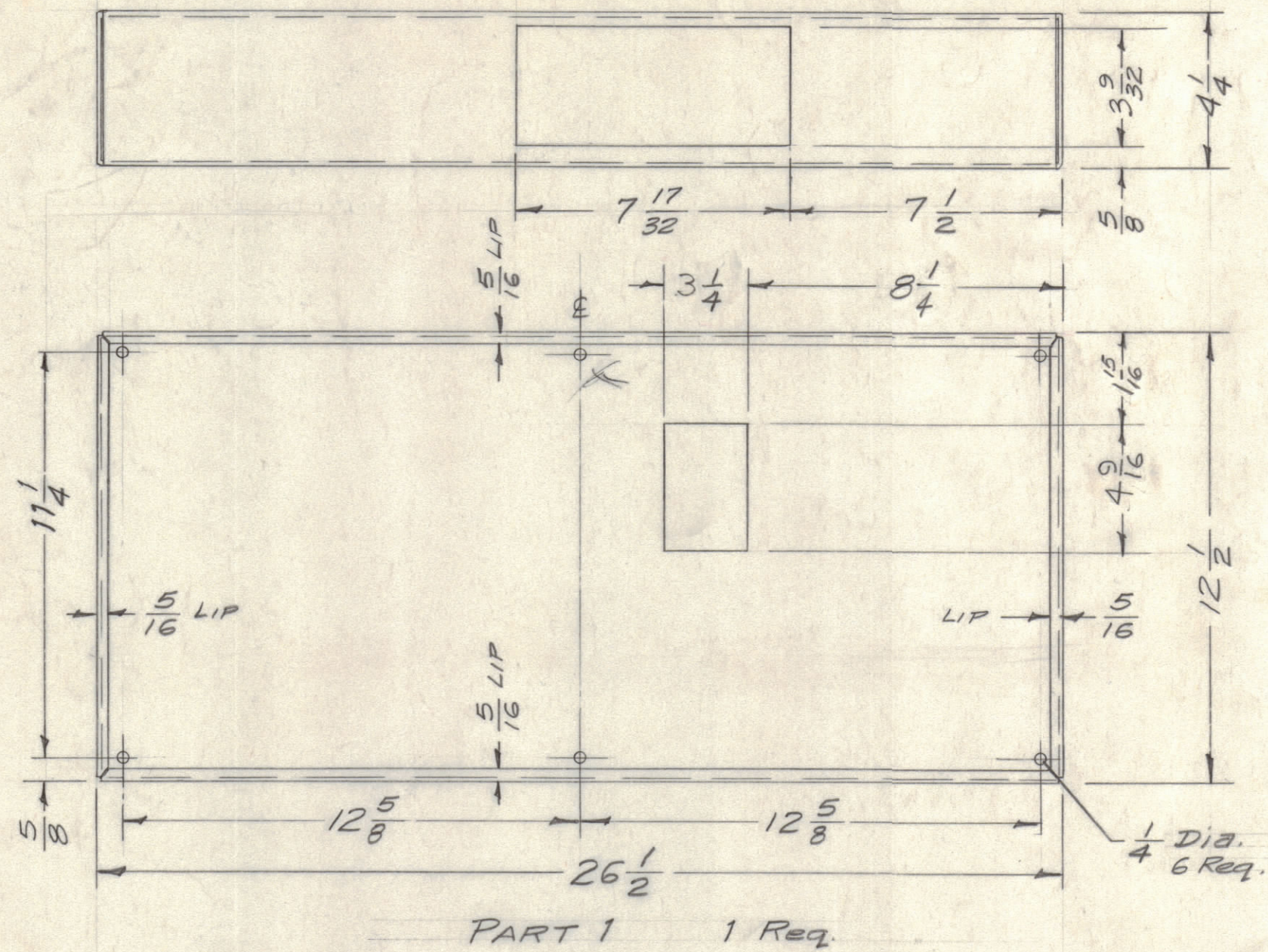
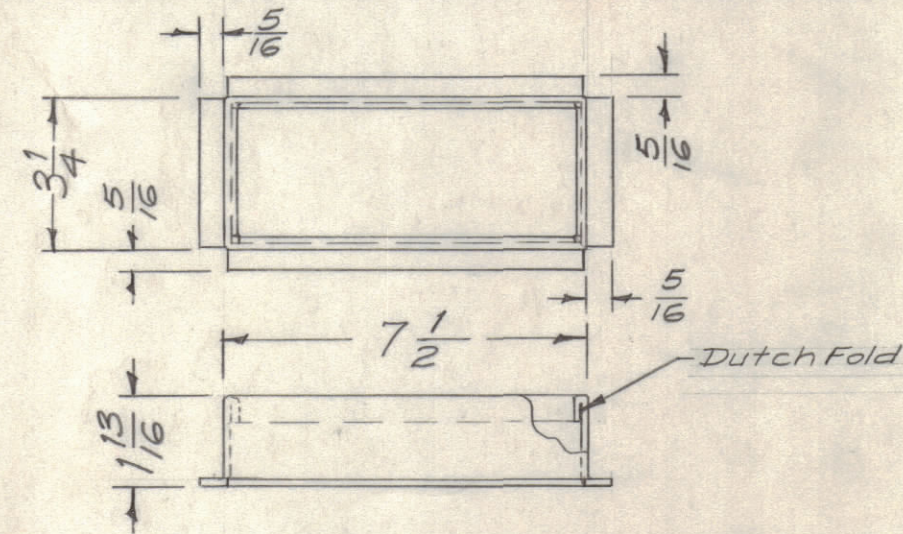


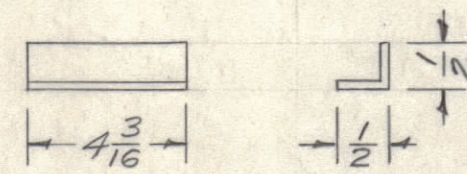
IF IT IS FOUND DESIRABLE TO CHANGE ANY TOLERANCE OR OTHER DETAIL SPECIFIED ON THIS DRAWING NOTIFY THE PURCHASER PROMPTLY.
 MAXIMUM ALLOWABLE TOLERANCES HAVE BEEN DETERMINED AND DEVIATIONS WILL BE CAUSE FOR REJECTION.
 REMOVE ALL BURRS AND SHARP EDGES



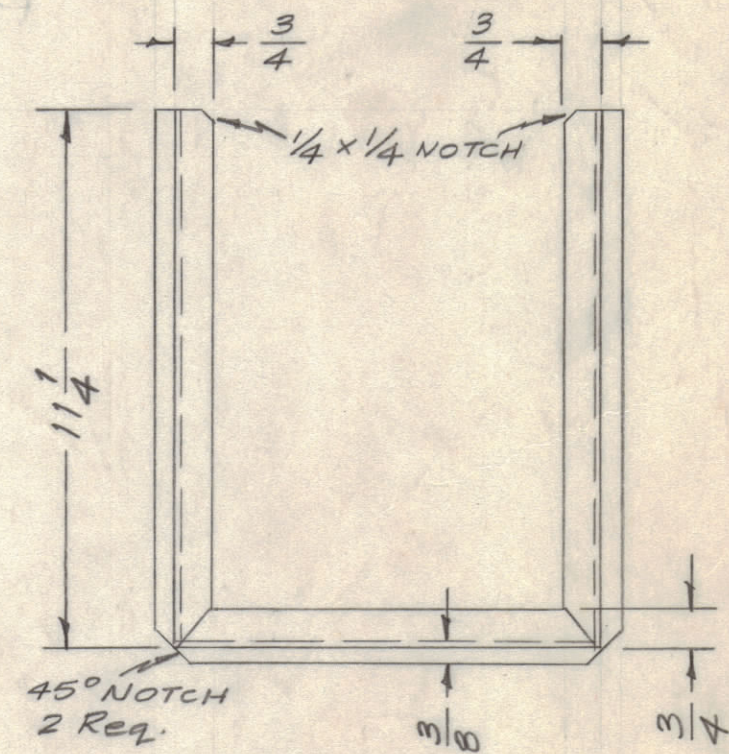
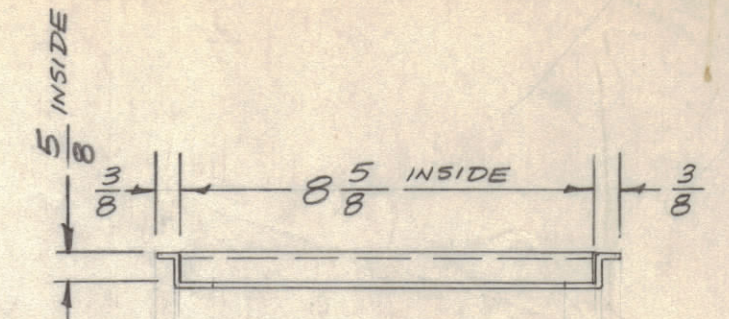
PART 2 1 Req.



PART 3 1 Req.

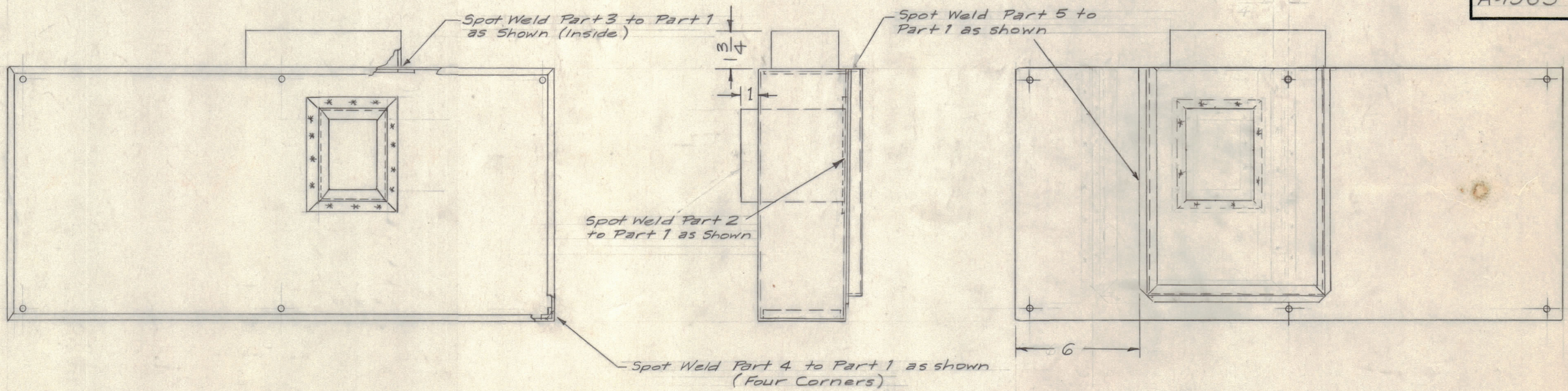


PART 4 4 Req.



PART 5 1 Req.

A-1363 G



ASSEMBLY

FINISH NOTE - Sand all Spot Welds Smooth
 Pickle Dip before Priming & Painting
 S114 - Zinc Chromate Primer (All Surfaces)
 S220 - RCAF Grey Smooth Enamel (All Inside Surfaces)
 S254 - RCAF Grey Wrinkle Enamel (All Outside Surfaces)

G	1	DIM. CHG. IN PART 1: 8 1/4 WAS 8 1/8 5 1/16 WAS 2 1/16	6/2/58	7	WV		
F	1	LIP Added on Part 2	2/2/58	6	JAB		
E	1	COMPLETELY REDWN. Broken down to parts (Part 2 was 2nd Ass'y (6-3/8 Long)	1/29/58	5	AW		
ISSUE	ITEM	CHANGED FROM	DATE	CN. NO.	DRAFTS	CHECKER	ENG. APP.
TOLERANCES		SCALE:					
ALL OTHERS	DEC. DIM. ± FRAC. DIM. ± ANGULAR DIM. ±	DRILL, PUNCH, COMMERCIAL STOCK SIZES AND MANUFACTURERS TOLERANCES ARE NOT INCLUDED.					

1	CAB/FRAME	ID-182	1-20-58
REQ. PER UNIT	MODEL	PROJECT NO.	ASS'Y. NO.
			DATE
	USED ON		

REQ. ITEM	PART NO.	DESCRIPTION	SYMBOL
	.022 THK.	THE TECHNICAL MATERIEL CORP.	
	STEEL	MAMARONECK, NEW YORK	
		EXHAUST FLUE,	
		GPT-750 CAB. & FRAME	
		161-20-58	
		EE - DRAWN	
		ELEC. DES. APP.	
		MECH. DES. APP.	
		CHECKED	
		FINAL APPROVAL	
		See Note	
		FINISH & SPEC. NO.	

A-1363 G