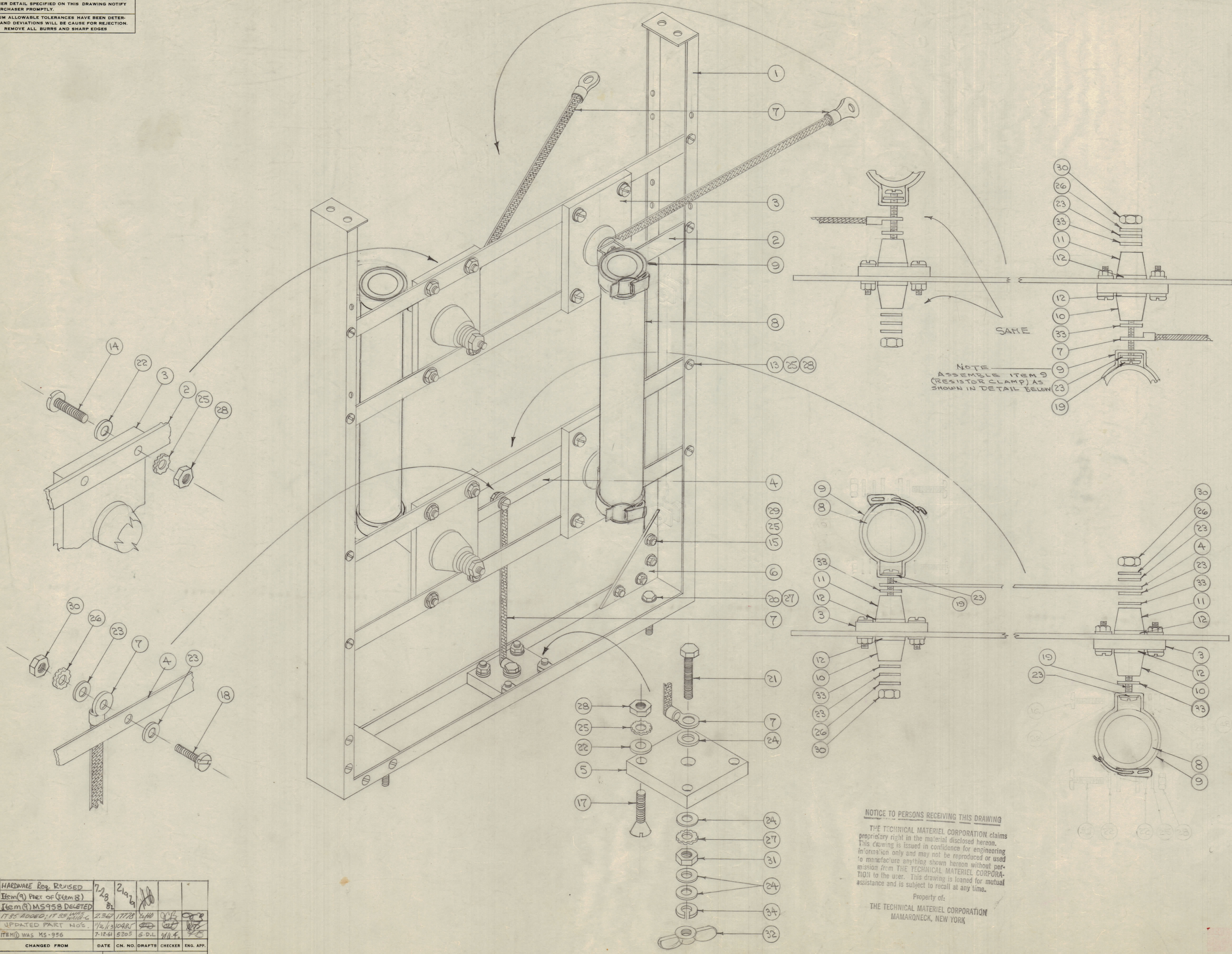


IF IT IS FOUND DESIRABLE TO CHANGE ANY TOLERANCE OR OTHER DETAIL SPECIFIED ON THIS DRAWING NOTIFY THE PURCHASER PROMPTLY.
 MAXIMUM ALLOWABLE TOLERANCES HAVE BEEN DETERMINED AND DEVIATIONS WILL BE CAUSE FOR REJECTION. REMOVE ALL BURRS AND SHARP EDGES.



NOTE
 ASSEMBLE ITEM 9
 (RESISTOR CLAMP) AS
 SHOWN IN DETAIL BELOW

NOTICE TO PERSONS RECEIVING THIS DRAWING
 THE TECHNICAL MATERIEL CORPORATION claims proprietary right in the material disclosed hereon. This drawing is issued in confidence for engineering information only and may not be reproduced or used to manufacture anything shown hereon without permission from THE TECHNICAL MATERIEL CORPORATION to the user. This drawing is loaned for mutual assistance and is subject to recall at any time.
 Property of:
 THE TECHNICAL MATERIEL CORPORATION
 MAMARONECK, NEW YORK

2	35	SCBP0632BN20	SCREW, MACHINE
1	34	LWS25MRN	WASHER, LOCK
8	33	WA-109-47	, FIBER
1	32	NT-110-2520-BN	NUT, WING
1	31	NTH2520BN14	, HEX
5	30	NTH0832BN12	, ,
8	29	NTH0632BN8	, ,
28	28	NTH0632BN10	, ,
3	27	LWE25MRN	WASHER, LOCK
5	26	LWE08MRN	, ,
40	25	LWE06MRN	, ,
A	24	FW25HRN	, FLAT
11	23	FW08HRN	, ,
24	22	FW06HRN	, ,
1	21	SCHW2520BN16	SCREW, HEX HEAD
2	20	SCHW2520BN12	, ,
A	19	SCRP0832BN30	, MACHINE
1	18	SCRP0832BN6	, ,
A	17	SCFP0632BN8	, ,
2	16	SCBP0632BN16	, ,
8	15	SCFP0632BN5	, ,
16	14	SCBP0632BN10	, ,
8	13	SCBP0632BN8	, ,
8	12	GA-118	GASKET
A	11	NS-112-2	INSULATOR, FEED THRU
4	10	NS-112-1	, ,
4	9	PART OF Item (8)	RETAINER CLIP
2	8	RR-119-300	RESISTOR
3	7	CA-312	STRAP ASSEMBLY
2	6	MS-766	GUSSET, RESISTOR SUPPORT
1	5	PX-316	INSULATOR, GD. STRAP
1	4	MS-966	CONNECTOR, GROUND
A	3	PX-344	MOUNT, RESISTOR
A	2	MS-957	BRACKET, RESISTOR
1	1	MS-745	MAIN SUPPORT, RESISTOR

D	HARDWARE Req. REVISED	2/28	2/28		
C	Item (9) Part of Item (8)				
B	Item (9) MS958 DELETED				
A	17, 25 ADDED; 11, 23, 24, 25, 26, 27, 28, 29, 30, 31, 32, 33, 34	2/26	1/27/28	2/4/28	
A	UPDATED PART NOS.	1/26/28	3/10/28		
A	ITEM (9) WAS MS-956	7-12-51	5205	S-D.L.	W.H.F.
ISSUE	ITEM	CHANGED FROM	DATE	CN. NO.	DRAFTS
					CHECKER
					ENG. APP.

ALL OTHERS	DEC. DIM. ± FRAC. DIM. ± ANGULAR DIM. ±	DRILL, PUNCH, COMMERCIAL STOCK SIZES AND MANUFACTURERS TOLERANCES ARE NOT INCLUDED.
------------	---	---

REQ PER UNIT	MODEL	PROJECT NO.	ASSY. NO.	DATE
1	TER-500-600		A-1224	11-9-56
				USED ON

STOCK SIZE	THE TECHNICAL MATERIEL CORP. MAMARONECK, NEW YORK		
MATERIAL	MAIN SUPPORT SUB ASSY.		
TYPE & TEMPER	CDW 1/2x1/2	CRS	
HEAT TREAT. SPEC.	AND	CHECKED	FINAL APPROVAL
FINISH & SPEC. NO.	A-1340 D		