

UNABLE TO CHANGE ANY TOLERANCE SPECIFIED ON THIS DRAWING NOTIFY PROMPTLY.

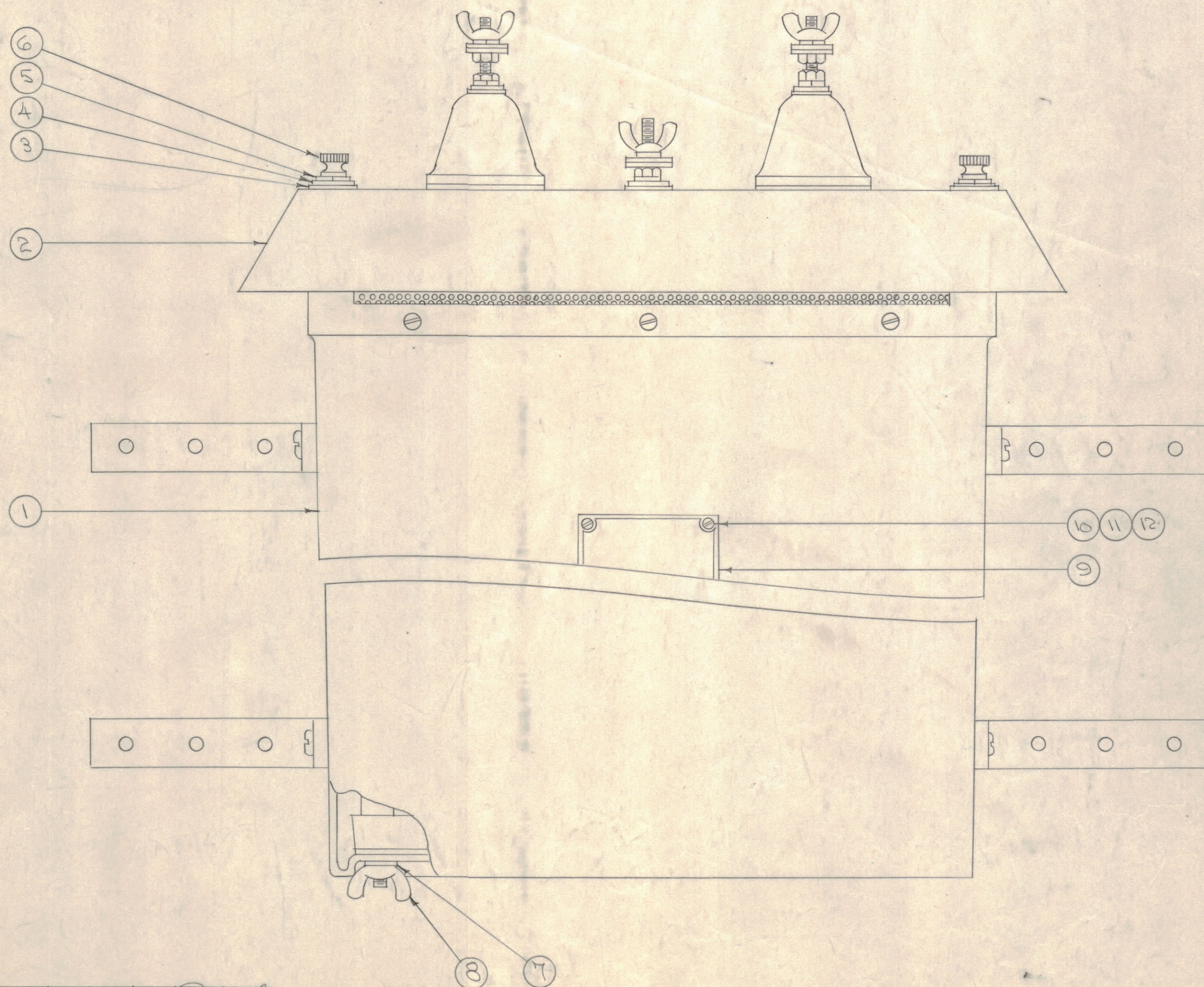
UNABLE TOLERANCES HAVE BEEN DETERMINED WILL BE CAUSE FOR REJECTION. ALL BURRS AND SHARP EDGES

NOTICE TO PERSONS RECEIVING THIS DRAWING

THE TECHNICAL MATERIEL CORPORATION claims proprietary right in the material disclosed hereon. This drawing is issued in confidence for engineering information only and may not be reproduced or used to manufacture anything shown hereon without permission from THE TECHNICAL MATERIEL CORPORATION to the user. This drawing is loaned for mutual assistance and is subject to recall at any time.

Property of:

THE TECHNICAL MATERIEL CORPORATION
MAMARONECK, NEW YORK



A-1336 A

4	12	NTH0256BN6	NUT, HEX
4	11	LWE02MRN	WASHER, LOCK
4	10	SCBP0256BN4	SCREW, MACHINE
1	9	NP-116-2	NAMEPLATE
2	8	NT-110-25268N	NUT, WING
2	7	LWE25MRN	WASHER, LOCK
2	6	SC-128-1024-8	SCREW, KNUBBED HEAD
2	5	LWS10MRN	WASHER, LOCK
2	4	FW10MRN	WASHER, FLAT
2	3	GA-134-2	GASKET
1	2	A-1224	COVER ASSEMBLY
1	1	A-1223	CASE ASSEMBLY

REQ. ITEM	PART NO.	DESCRIPTION	SYMBOL
THE TECHNICAL MATERIEL CORP.			
MAMARONECK, NEW YORK			
STOCK SIZE			
FINAL ASSY.			
MATERIAL WEIGHT PER PC. MODEL TER-500			
TYPE & TEMPER		8/22/56	MD
HEAT TREAT. SPEC.		CHKD	APP
FINISH & SPEC. NO.		A-1336 A	

LDUP UPDATED	1/22/53	10487	AD	MB
CHANGED FROM	DATE	CN. NO.	DRAFTS	CHECKER
TOLERANCES	SCALE:			
±	DRILL, PUNCH, COMMERCIAL STOCK			
M. ±	SIZES AND MANUFACTURERS			
DIM. ±	TOLERANCES ARE NOT INCLUDED.			

1	TER-500	529	7	8-22-56
REQ. PER UNIT	MODEL	PROJECT NO.	ASS'Y. NO.	DATE
USED ON				