

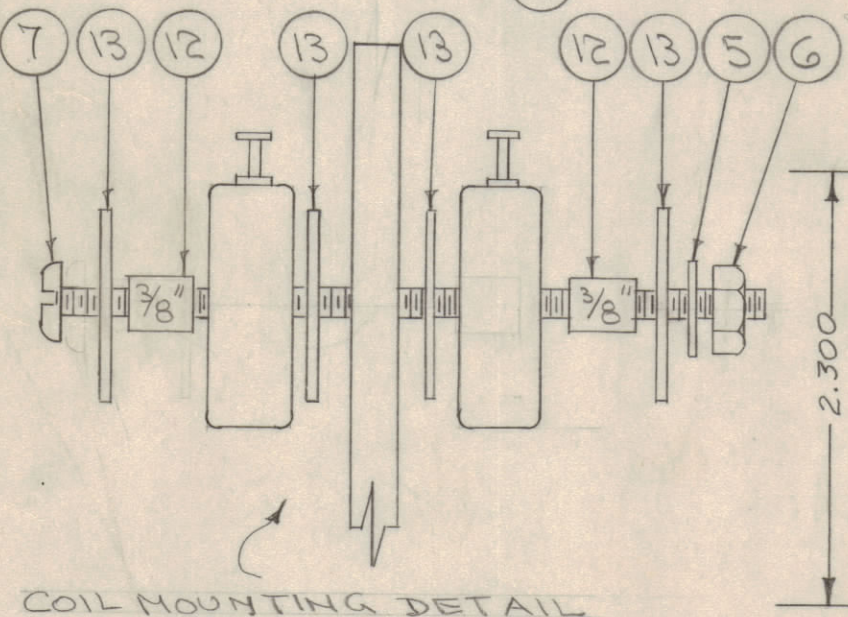
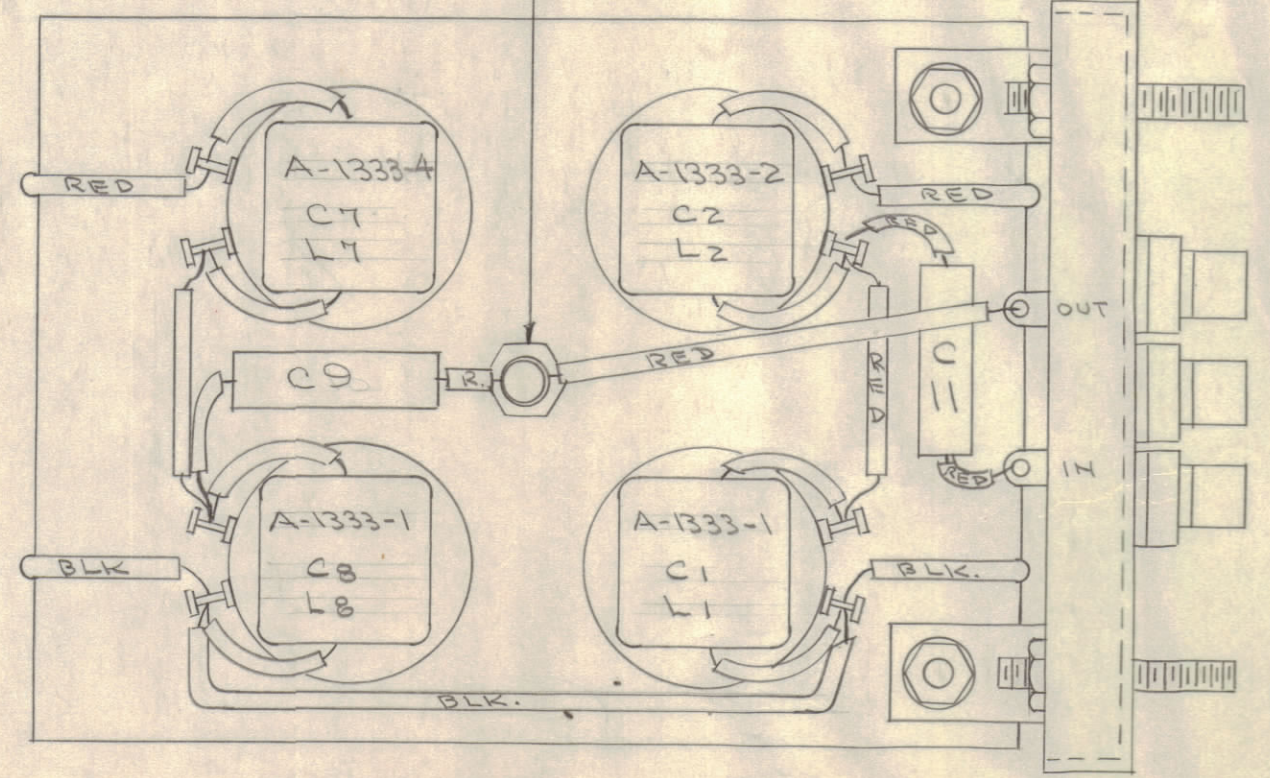
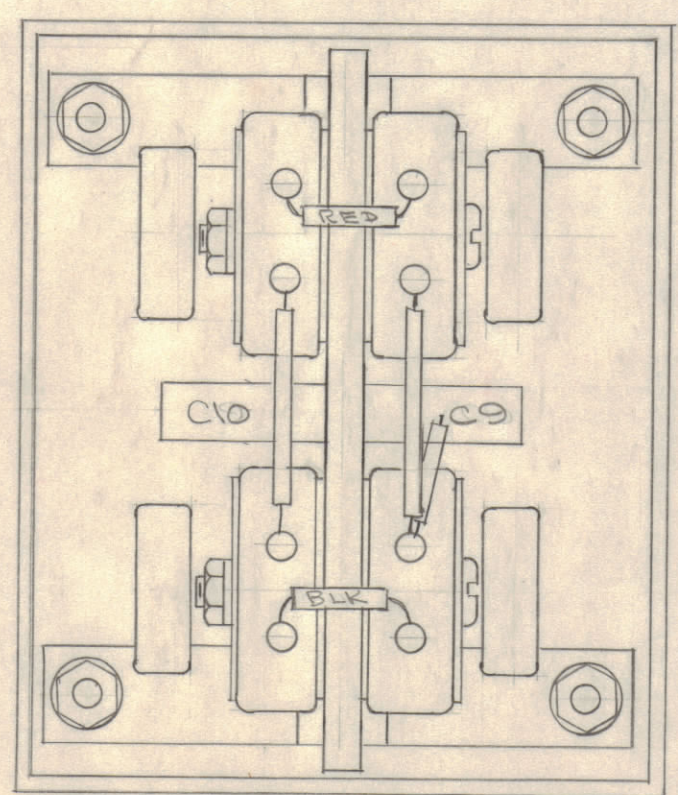
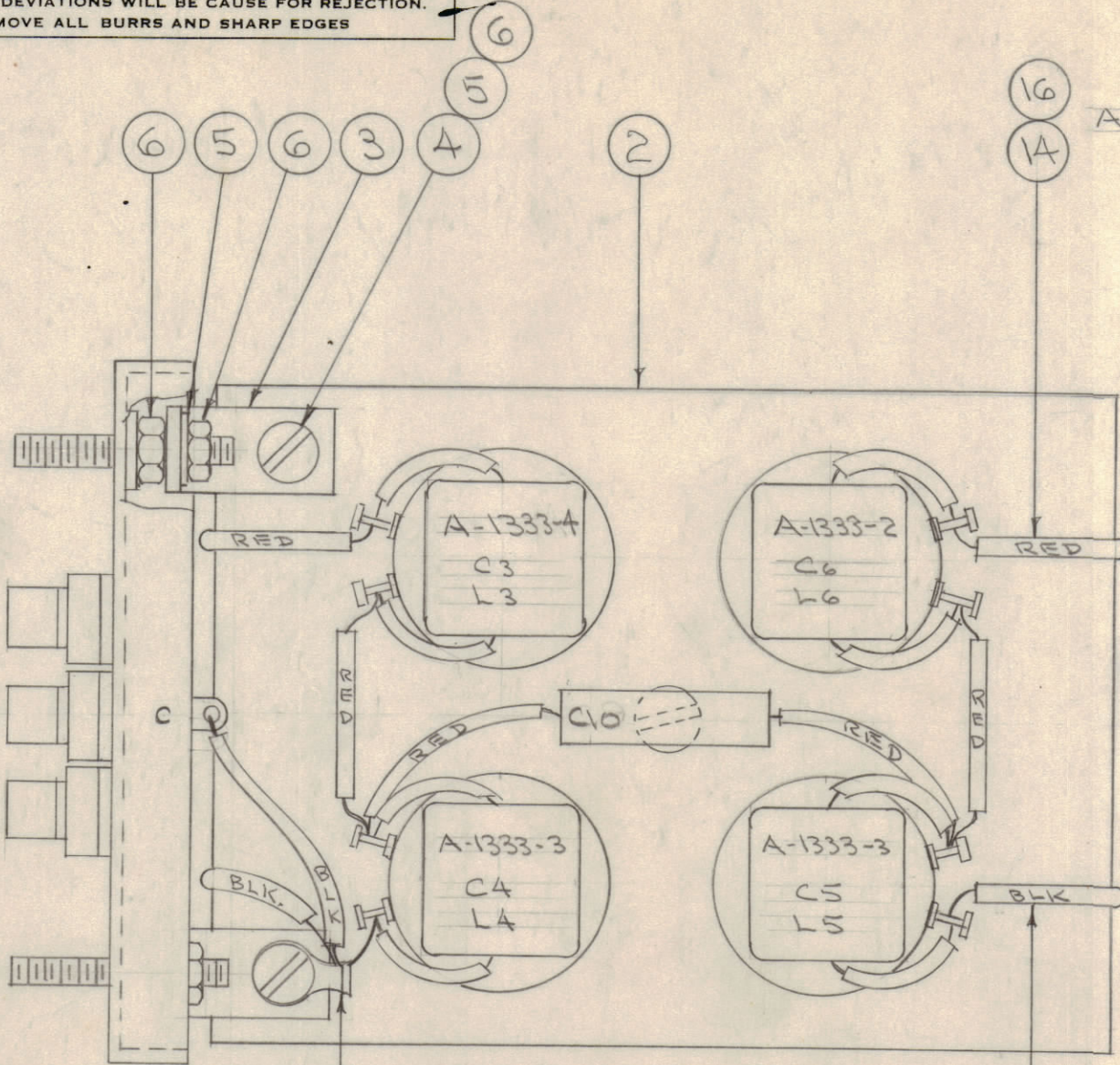
IF IT IS FOUND DESIRABLE TO CHANGE ANY TOLERANCE OR OTHER DETAIL SPECIFIED ON THIS DRAWING NOTIFY THE PURCHASER PROMPTLY.

MAXIMUM ALLOWABLE TOLERANCES HAVE BEEN DETERMINED AND DEVIATIONS WILL BE CAUSE FOR REJECTION. REMOVE ALL BURRS AND SHARP EDGES

NOTICE TO PERSONS RECEIVING THIS DRAWING

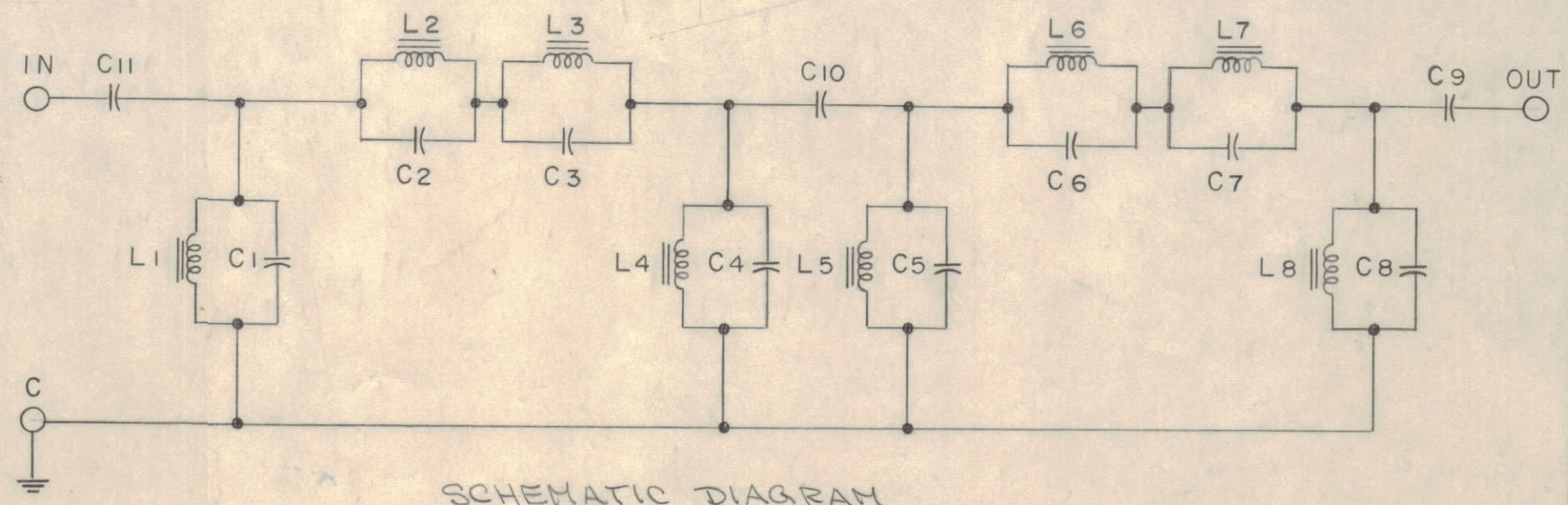
THE TECHNICAL MATERIEL CORPORATION claims proprietary right in the material disclosed hereon. This drawing is issued in confidence for engineering information only and may not be reproduced or used to manufacture anything shown hereon without permission from THE TECHNICAL MATERIEL CORPORATION to the user. This drawing is loaned for mutual assistance and is subject to recall at any time.

Property of:
THE TECHNICAL MATERIEL CORPORATION
MAMARONECK, NEW YORK



COIL MOUNTING DETAIL

NOTE - CAN.
AFTER ASSEMBLY OF TERMINAL BOARD AS SHOWN ABOVE:
1- SOLDER ENDS IN PLACE.
2- SMOOTH ALL SEAMS
3- DEGREASE AND FINISH WITH S-115 SMOOTH GRAY ENAMEL
4- STAMP TERMINAL END AS SHOWN.
5- STAMP OPPOSITE END WITH TMC INSIGNIA & FX-150.
6- TEST AS PER TMC SPEC # S-304, & ACCORDING TO ELECTRICAL SPECIFICATIONS ON FX-150.



SCHMATIC DIAGRAM

1	23	SCBS0440BC8	SCREW, MACHINE	
1	22	LWE04MRC	WASHER, LOCK.	
1	21	CM20EA31G	CAPACITOR, FIXED	C10
2	20	CM20E821G	") "	C9

A-1335 A

X	19	BS-100	SOLDER, SOFT	
1	18	TE-102-2	STANDOFF	
1	17	TE-104-2	GROUND LUG	
X	16	PX-104-3-022	INSULATION, SLEEVING	
X	15	PX-104-1-022	") "	
X	14	WL-100-7	WIRE, BUSS BAR	
16	13	WA-109-56	WASHER, FIBER	
X	12	PX-104-1-208	INSULATION, SLEEVING	
2	11	A-1333-4	COIL ASSY. L3, L7	
2	10	A-1333-3	" " L4, L5	
2	9	A-1333-2	" " L2, L6	
2	8	A-1333-1	" " L1, L8	
4	7	SCBS0632BC18	SCREW, MACHINE	
14	6	NTH0632BC8	NUT, HEX	
9	5	LWE06MRC	WASHER, LOCK	
2	4	SCBS0632BC8	SCREW, MACHINE	
4	3	MS-959	BRACKET	
1	2	PX-343	TERMINAL BOARD	
1	1	BX-145	CAN	

REQ. ITEM	PART NO.	DESCRIPTION	SYMBOL
THE TECHNICAL MATERIEL CORP. MAMARONECK, NEW YORK			
STOCK SIZE			
FINAL ASSEMBLY			
MATERIAL WEIGHT PER PC.			
FX-150			
TYPE & TEMPER			
DRAWN		ELEC. DES. APP.	
CHECKED		MECH. DES. APP.	
HEAT TREAT. SPEC.			
SEE NOTE			
FINISH & SPEC. NO.			

A	1	NEW VIEWS ADDED	11/5/56	1	16	J.H.R.	W.C.
ISSUE	ITEM	CHANGED FROM	DATE	CN. NO.	DRAFTS	CHECKER	ENG. APP.
TOLERANCES		SCALE:					
ALL OTHERS	DEC. DIM. ±	DRILL, PUNCH, COMMERCIAL STOCK					
	FRAC. DIM. ±	SIZES AND MANUFACTURERS					
	ANGULAR DIM. ±	TOLERANCES ARE NOT INCLUDED.					

1	GSS-1	455	8-16-56
REQ PER UNIT	MODEL	PROJECT NO.	ASS'Y. NO.
			DATE
USED ON			