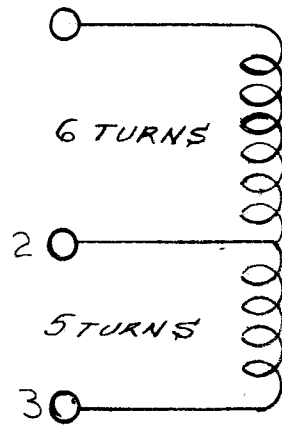
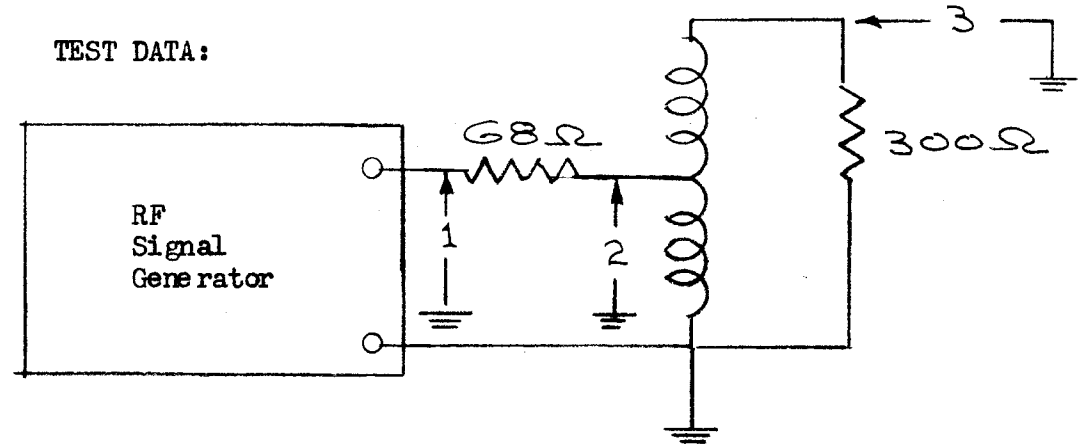


CLOSE WIND 6 TURNS OF ITEM 2. BRING OUT CENTER TAP. CONTINUE WINDING FOR 5 MORE TURNS. ALLOW APPROX. 1" LEADS FOR COIL ENDS AND CENTER TAP. COAT COIL WITH ITEM 3 AND BAKE DRY FOR 10 MIN. AT 100° F. ALLOW TO COOL TO ROOM TEMPERATURE. WIND LEFT TO RIGHT.

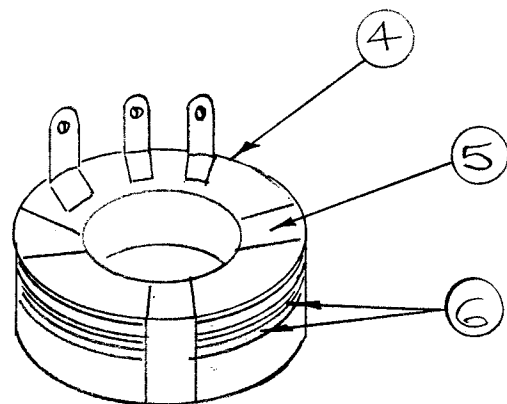


TEST DATA:



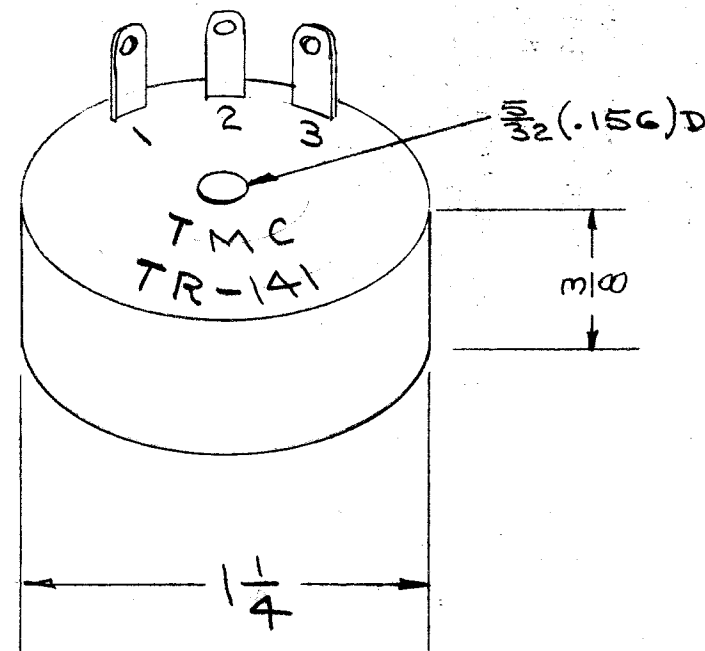
f mcs	1	2	3
2	1 volt	.4 - .6V	.8 - 1.3
16	1 volt	.4 - .6V	.8 - 1.3
32	1 volt	.4 - .6V	.8 - 1.3

Use Heath Kit RF probe only to test the RF voltages.



USE ONE OF ITEM 6 FLAT, FOLD THE OTHER ONE IN HALF & PLACE AS SHOWN TO TAKE UP SPACE OF WIRES & TERM. CRIMP ON OTHER SIDE OF CORE.

WRAP WIRES TO THEIR RESPECTIVE TERMINALS AND SOLDER AS SHOWN.



STAMP AS SHOWN  
BLACK GOTHIC

WINDING	TERMINALS	IMPEDANCE
PRIMARY:	2 AND 3	75
SECONDARY:	1 AND 3	300

REQ. ITEM	PART NO.	DESCRIPTION	SYMBOL
X 8	GL-106	COMPOUND, PLASTIC	
X 7	BS-100	SOLDER, SOFT	
2 6	IM-155	INSULATOR	
X 5	TA-100-1	TAPE	
1 4	A-1327-3	INSULATOR SUB-ASSY	
X 3	GL-102	Q-MAX A-27	
X 2	WI-102-9	WIRE, #30 SCE	
1 1	CI-100-2-H	CORE, TOROIDAL	
STOCK SIZE		THE TECHNICAL MATERIEL CORP. MAMARONECK, NEW YORK	
MATERIAL		TRANSFORMER, RF STEP-UP TR-141 75Ω UB - 300Ω UB	
TYPE & TEMPER		HEAT TREAT. SPEC.	DRAWN
FINISH & SPEC. NO.		ELEC. DES. APP.	MECH. DES. APP.

NOT TO BE RELEASED  
W/O AUTHORIZATION

AUTH. BY: \_\_\_\_\_  
DATE: \_\_\_\_\_

ISSUE	ITEM	CHANGED FROM	DATE	CH. NO.	DRAFTS	CHECKER	ENG. APP.
A	1	ITEM 6 WAS IM-165 ITEM 4 WAS A-1327		1		C.S. [Signature]	

DEC. DIM. ±	FRAC. DIM. ±	ANGULAR DIM. ±	REQUIREMENTS
			MAXIMUM ALLOWABLE TOLERANCES HAVE BEEN DETERMINED AND ANY DEVIATIONS WILL BE CAUSE FOR REJECTION. REMOVE ALL BURRS AND SHARP EDGES

REQ. PER UNIT	MODEL	PROJECT NO.	ASS'Y. NO.	DATE

USED ON