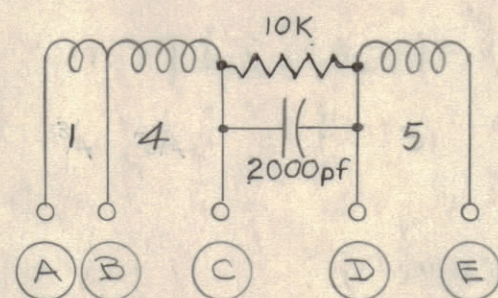
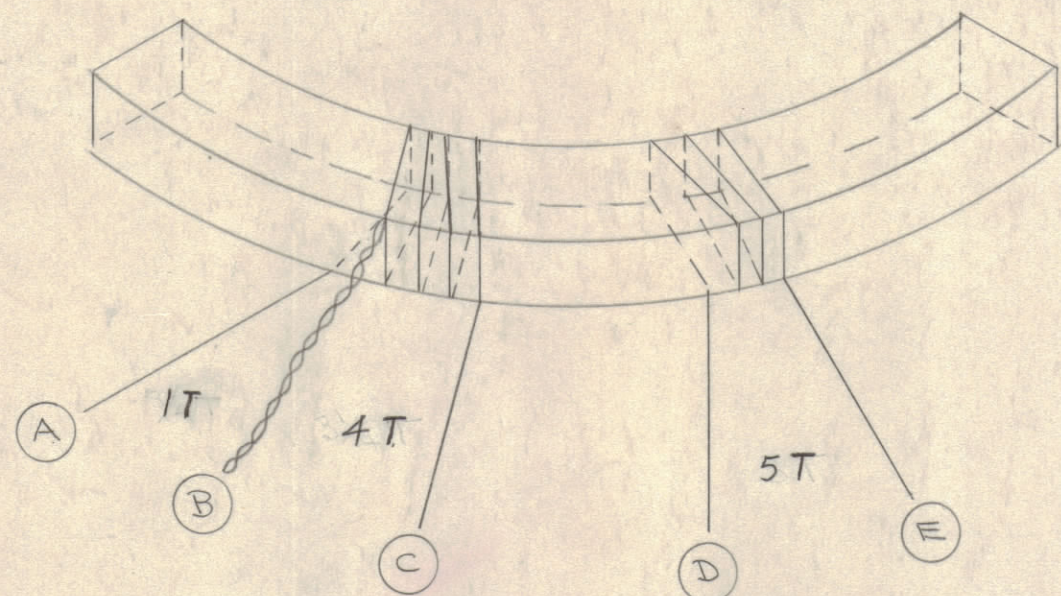


IF IT IS FOUND DESIRABLE TO CHANGE ANY TOLERANCE OR OTHER DETAIL SPECIFIED ON THIS DRAWING NOTIFY THE PURCHASER PROMPTLY.

MAXIMUM ALLOWABLE TOLERANCES HAVE BEEN DETERMINED AND DEVIATIONS WILL BE CAUSE FOR REJECTION. REMOVE ALL BURRS AND SHARP EDGES

WINDING, CLOSE WOUND



STEP 1

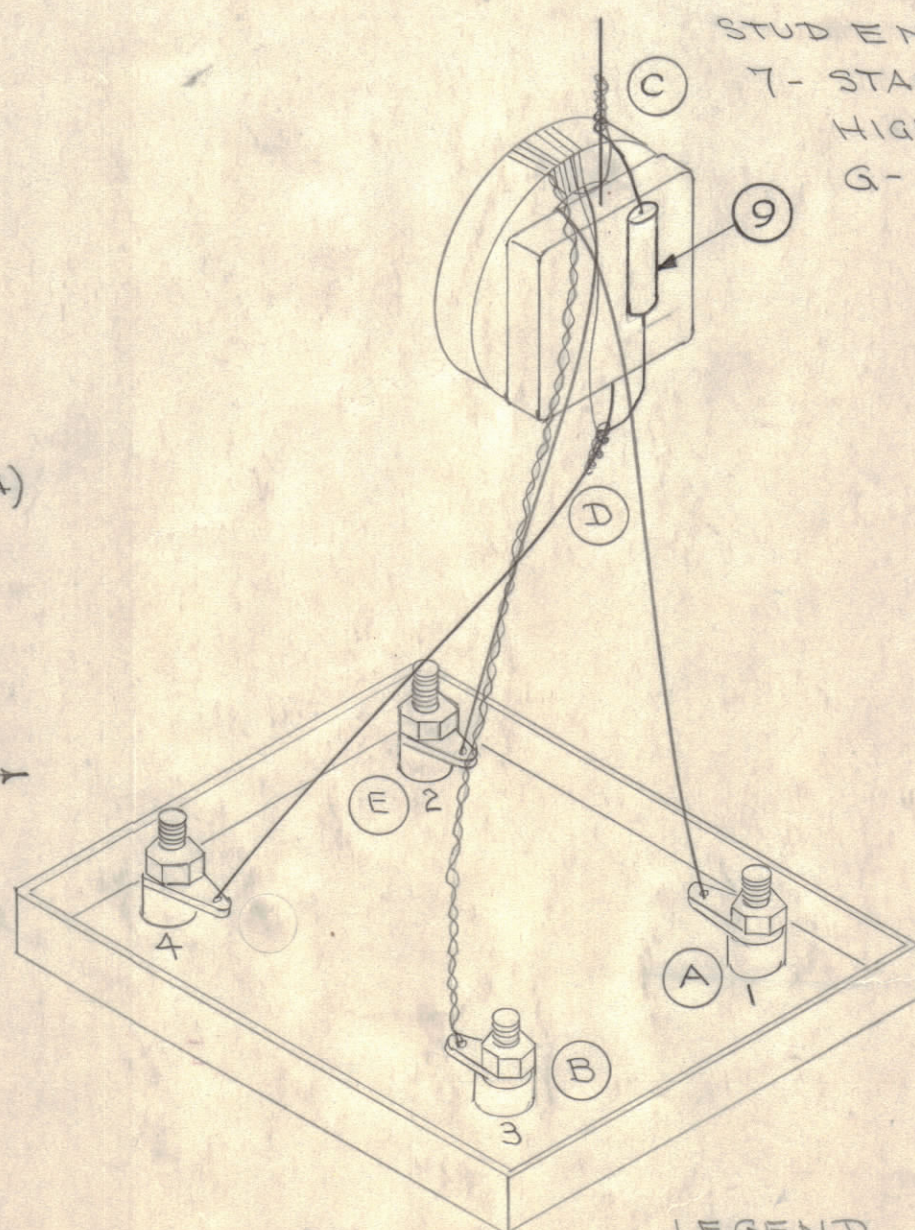
WINDING - AS ABOVE - CLOSE WOUND

- 1- STAKE WINDING & LEADS TO COIL FORM WITH CEMENT. (ITEM 3)
- 2- COAT COIL WITH U-85 (INSULEX). (ITEM 4)
- 3- BAKE FOR 1 HOUR AT 215° F.
- 4- ALLOW TO COOL AT ROOM TEMP.

STEP 2

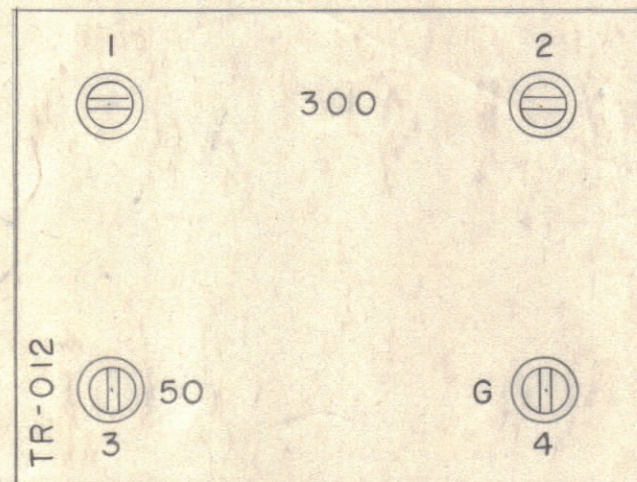
CONNECTIONS - AS SHOWN

KEEP COIL & CAPACITOR AT LEAST 3/8" ABOVE COVER.



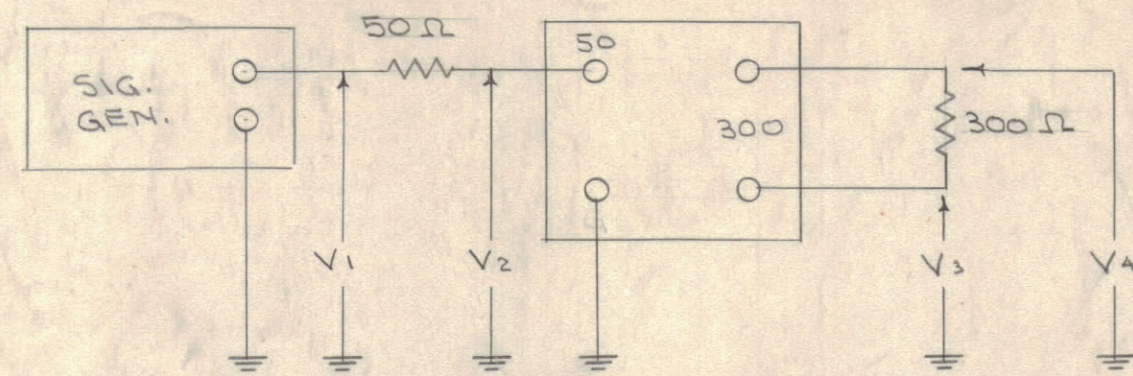
LEGEND

- A & E 300Ω TERMINALS
- B 50Ω OUTPUT
- D GROUND



STEP 3

- 1- MAKE SOLDER CONNECTIONS AS BELOW.
- 2- SOLDER COVER IN PLACE.
- 3- USING GL-106, POT TO WITHIN 3/8" OF TOP
- 4- SOLDER BOTTOM IN PLACE
- 5- SMOOTH ALL SEAMS.
- 6- CLEAN CASE. FINISH TOP & SIDES WITH S-115 (SMOOTH GRAY ENAMEL.) DO NOT PAINT STUD END.
- 7- STAMP AS ABOVE. 1/8" HIGH BLACK GOTHIC. G-50 & 300 & TR-012



* RF VOLTS				
f mc	V ₁	V ₂	V ₃	V ₄
2	1.0	.53	.63	.58
8	1.0	.54	.64	.54
30	1.0	.58	.64	.64

* HP VTVM ±10%

A-1320 B

NOT TO BE RELEASED W/O AUTHORIZATION

AUTH. BY.....

DATE:.....

REQ. ITEM	PART NO.	DESCRIPTION	SYMBOL
1	9	RC20GF103K	RESISTOR, FIXED, COMPOSITION
X	8	BS-100	SOLDER, SOFT
X	7	GL-106	COMPOUND, POTTING
1	6	BX-106	CAN
1	5	CM35C202J	CAPACITOR, FIXED
X	4	GL-104-2	INSULEX, U85
X	3	GL-103	CEMENT
X	2	WI-102-9-9	WIRE, COTENAMEL #30
1	1	CI-104	CORE, TOROIDAL

THE TECHNICAL MATERIEL CORP.			
MAMARONECK, NEW YORK			
TRANSFORMER ASSY.			
STOCK SIZE		TR-012	
MATERIAL	WEIGHT PER PC.		
TYPE & TEMPER		6/16/56	ARB
HEAT TREAT. SPEC.		118	
FINISH & SPEC. NO.		A. J. T.	
DRAWN		ELEC. DES. APP.	
CHECKED		MECH. DES. APP.	
FINAL APPROVAL		A-1320 B	

ISSUE	ITEM	CHANGED FROM	DATE	CN. NO.	DRAFTS	CHECKER	ENG. APP.
B	1	ITEM 9 ADDED; 10K RES. & 2000pf ADDED TO SCHEM.	6/16/56	11579	A.M.	@	
A	1	UPDATED DWG.	3-7-64	10954	AM.	@	

REQ PER UNIT	MODEL	PROJECT NO.	ASS'Y. NO.	DATE
1	RAC-11	549		6-4-56