

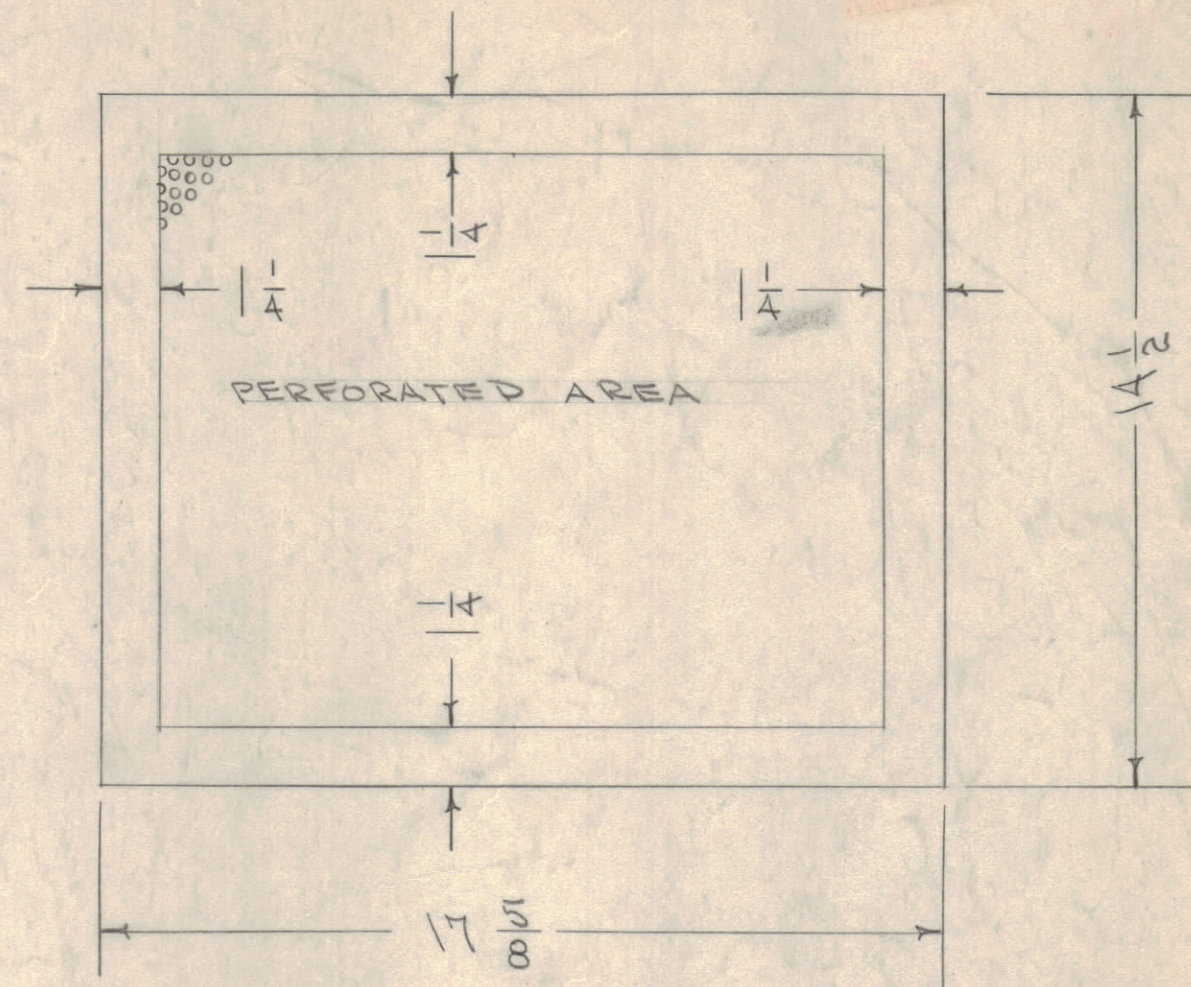
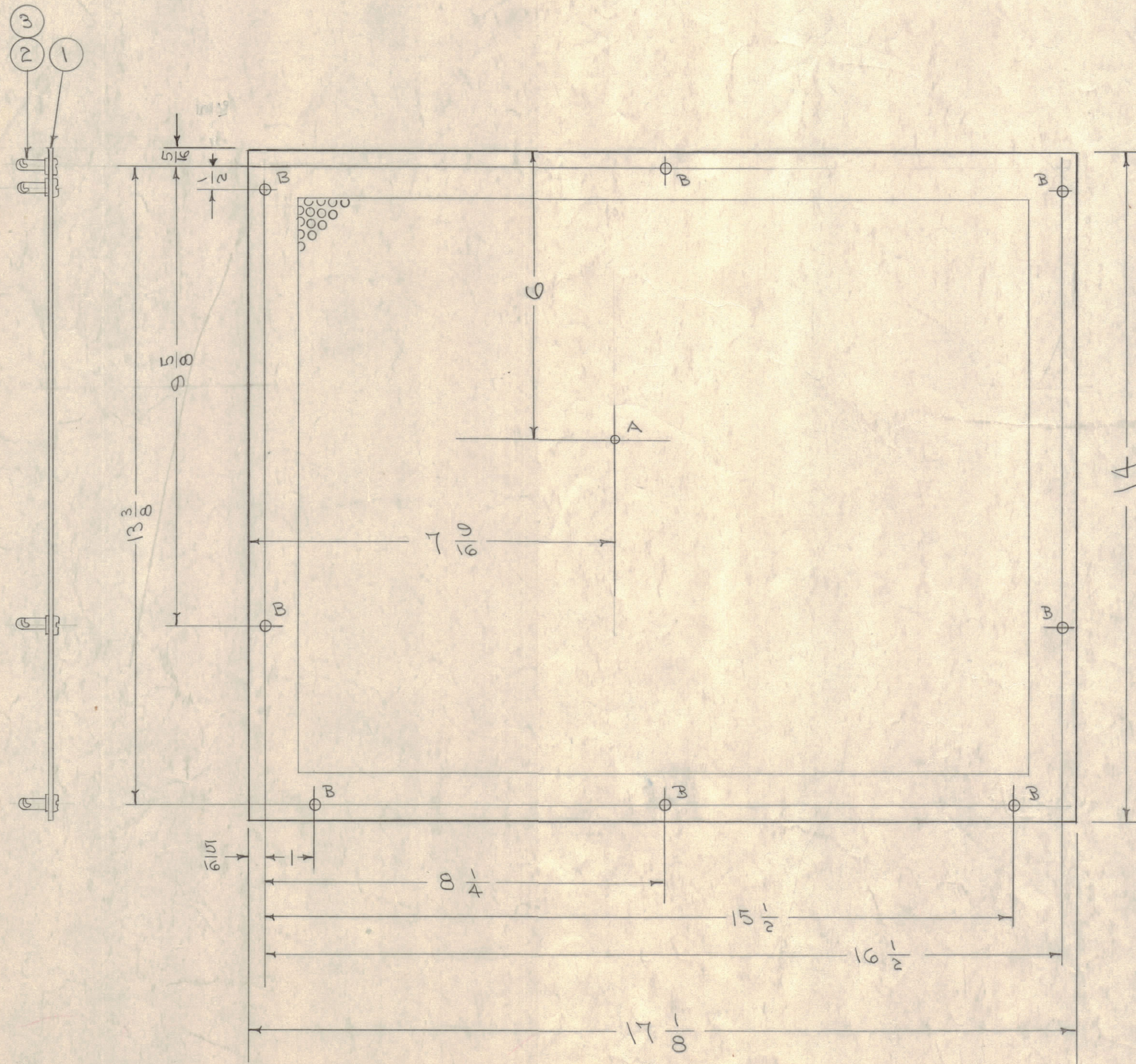
IF IT IS FOUND DESIRABLE TO CHANGE ANY TOLERANCE OR OTHER DETAIL SPECIFIED ON THIS DRAWING NOTIFY THE PURCHASER PROMPTLY.

MAXIMUM ALLOWABLE TOLERANCES HAVE BEEN DETERMINED AND DEVIATIONS WILL BE CAUSE FOR REJECTION. REMOVE ALL BURRS AND SHARP EDGES

NOTICE TO PERSONS RECEIVING THIS DRAWING

THE TECHNICAL MATERIEL CORPORATION claims proprietary right in the material disclosed hereon. This drawing is issued in confidence for engineering information only and may not be reproduced or used to manufacture anything shown hereon without permission from THE TECHNICAL MATERIEL CORPORATION to the user. This drawing is loaned for mutual assistance and is subject to recall at any time.

Property of:
THE TECHNICAL MATERIEL CORPORATION
MAMARONECK, NEW YORK



BLANK LAYOUT
PERFORATIONS - .012 D. HOLES ON 1/8 CENTERS.

A-1318 C

A - 3/16 (.1875) DIA. 1 HOLE REQ.
B - 1/4 (.250) " 8 " "

C	1	DELE NOTE ON IT. 1 & SUPERCED	5-19-71	20342	RF	Q	WPK
B	1	ITEM(3) WAS PS-109-3	12/23/63	10193	RF	JW	WPK
A	1	S404 - IRDITE WAS 5101 - CAUSTIC DIP	12-9-59	1001	RF	EMM	EMM
ISSUE	ITEM	CHANGED FROM	DATE	CN. NO.	DRAFTS	CHECKER	ENG. APP.
TOLERANCES		SCALE:					
ALL OTHERS	DEC. DIM. ±	DRILL, PUNCH, COMMERCIAL STOCK SIZES AND MANUFACTURERS TOLERANCES ARE NOT INCLUDED.					
	FRAC. DIM. ± 1/64						
	ANGULAR DIM. ±						

8	3	FS-109-3	RING, RETAINING	
8	2	FS-110-1	STUD, SLOTTED HEAD	
1	1	MS-214	BOTTOM COVER	
REQ.	ITEM	PART NO.	DESCRIPTION	SYMBOL
		.051	THE TECHNICAL MATERIEL CORP. MAMARONECK, NEW YORK	
STOCK SIZE		BOTTOM COVER ASSY		
MATERIAL		ALUMINUM		
WEIGHT PER PC.		50S2 H32		
TYPE & TEMPER		XFK		
		DRAWN: JADE		
		ELEC. DES. APP.:		
		MECH. DES. APP.:		
HEAT TREAT. SPEC.		S404-YEL IRDITE		
FINISH & SPEC. NO.		A-1318 C		

1	XFK	A-367	10-6-53
REQ PER UNIT	MODEL	PROJECT NO.	DATE
		ASS'Y. NO.	
USED ON			