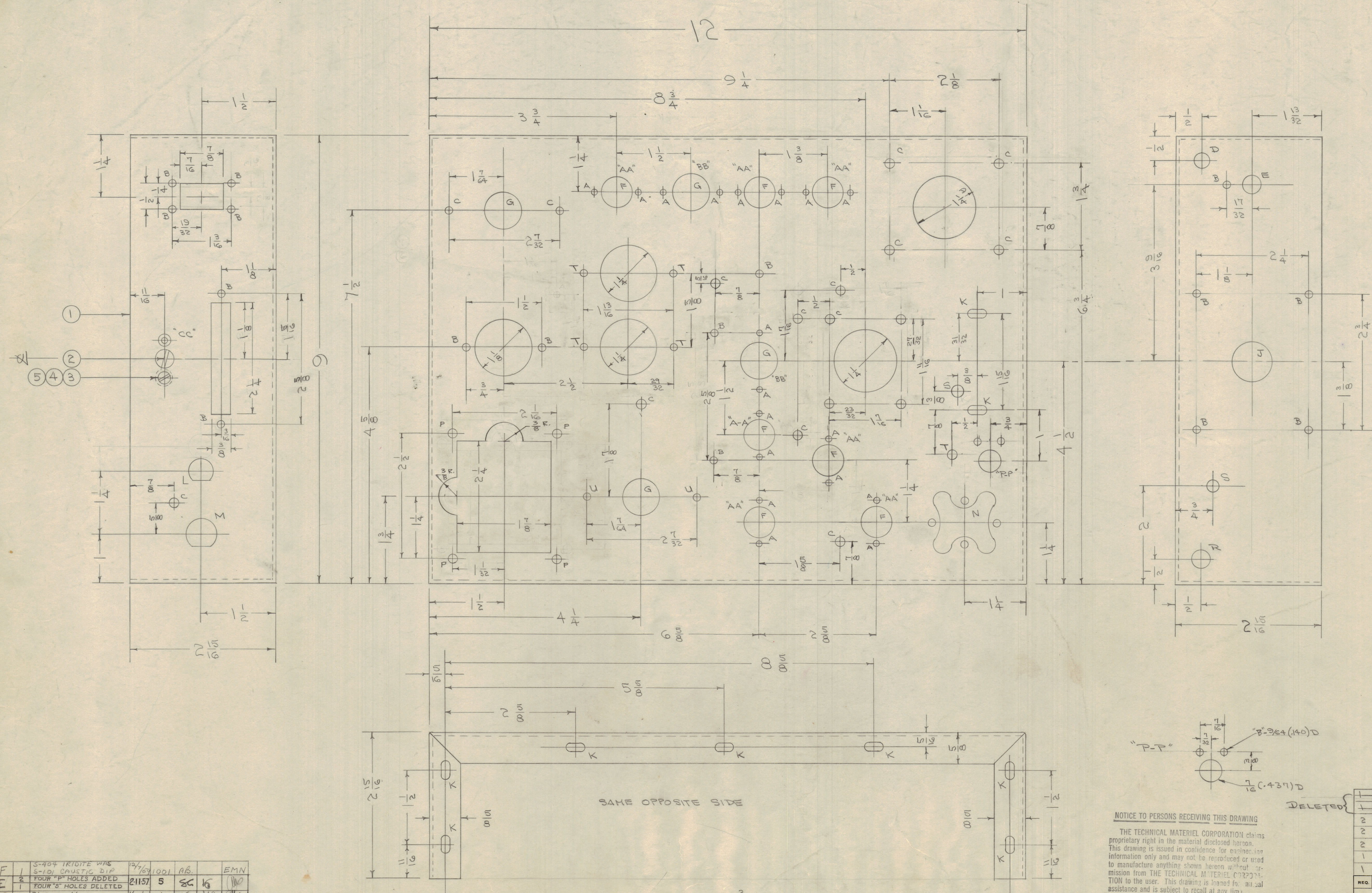
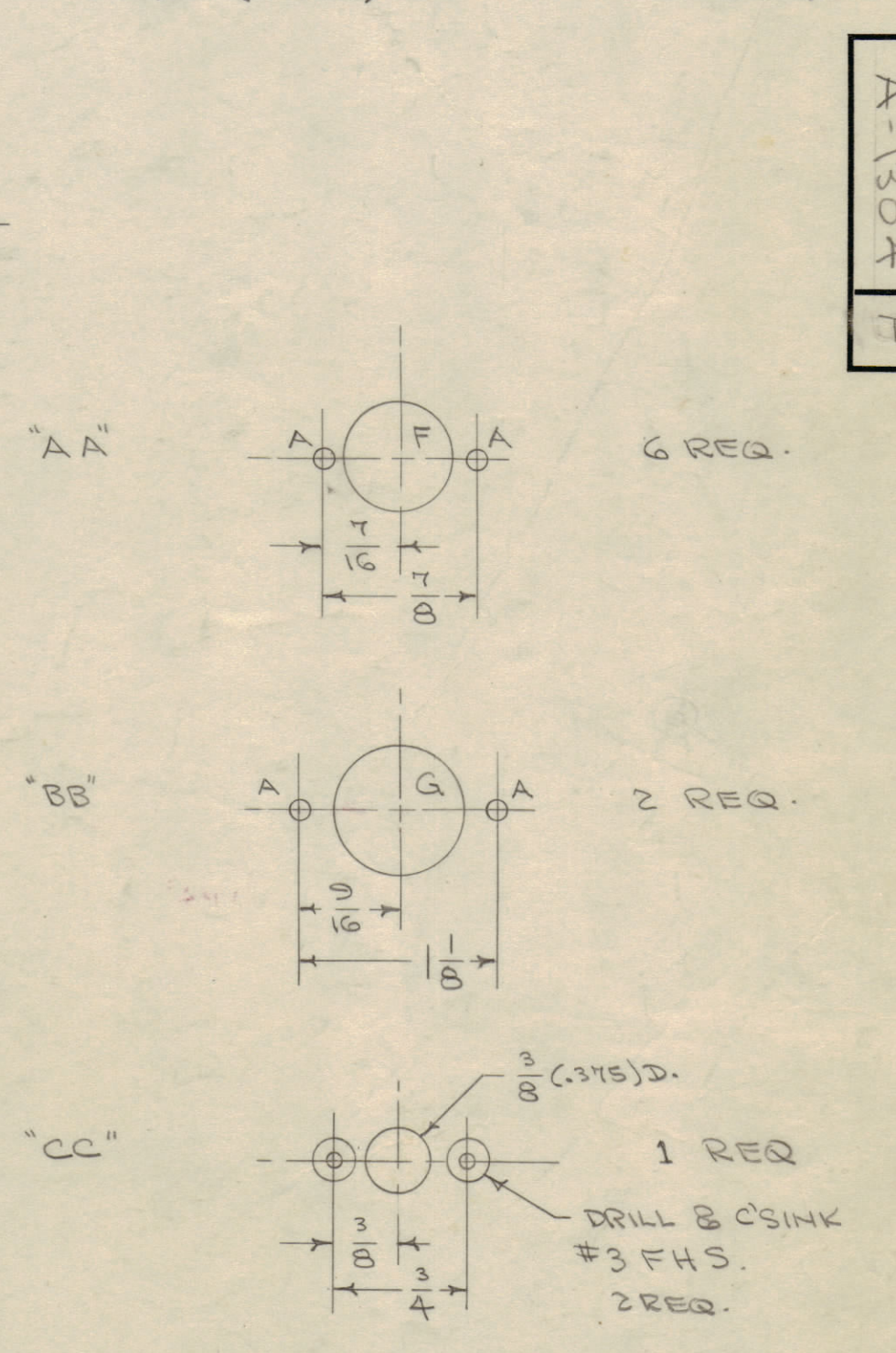


IF IT IS FOUND DESIRABLE TO CHANGE ANY TOLERANCE OR OTHER DETAIL SPECIFIED ON THIS DRAWING NOTIFY THE PURCHASER PROMPTLY.
 MAXIMUM ALLOWABLE TOLERANCES HAVE BEEN DETERMINED AND DEVIATIONS WILL BE CAUSE FOR REJECTION.
 REMOVE ALL BURRS AND SHARP EDGES

- A - 1/8 (.125) DIA. - 18 HOLES REQ.
- B - 9/64 (.140) " - 18 " "
- C - 3/16 (.187) " - 17 " "
- D - 5/16 (.312) " - 1 " "
- E - 13/32 (.406) " - 1 " "
- F - 5/8 (.625) " - 7 " "
- G - 3/4 (.750) " - 4 " "
- J - 13/16 (.812) " - 1 " "
- K - 1/64 X 1/32 SLOTS - 16 SLOTS REQ.



- L - 1 REQ.
- M - 1 REQ.
- N - SEE MS-119 1 REQ.
- R - 1/2 (.500) D 1 REQ.
- S - 1/4 (.250) D 2 REQ.
- T - 13/64 (.203) D 5 REQ.
- U - 1/64 (.171) D 2 REQ.
- P - 13/64 (.2031) 4 REQ.



F	1	S-404 IRIDIUM WAS	12/7/57	1001	AB		EMN
E	2	FOUR "P" HOLES ADDED	2/11/57	5	SC	16	
E	1	FOUR "S" HOLES DELETED					
D	1	3/8 R. WAS 1/4 R	4/25/57	4	K		
C	3	T & U HOLES ADDED	1/2/56	3	K		
C	2	C HOLE QUAN. WAS 24					
C	1	5 HOLE QUAN. CORRECTED (WAS 4)					
B	2	ONE "A" HOLE DELETED	11/25/56	2	AK		WDC
B	1	ITEMS 2 & 1 DELETED					
A	1	COMPLETELY REVISED	8/24/56	1	AK		WDC

ISSUE	ITEM	CHANGED FROM	DATE	CH. NO.	DRAFTS	CHECKER	ENG. APP.
TOLERANCES		SCALE:					
ALL OTHERS	DEC. DIM. ±	DRILL PUNCH, COMMERCIAL STOCK					
	FRAC. DIM. ± 1/64	SIZES AND MANUFACTURERS					
	ANGULAR DIM. ±	TOLERANCES ARE NOT INCLUDED.					

NOTICE TO PERSONS RECEIVING THIS DRAWING

THE TECHNICAL MATERIEL CORPORATION claims proprietary right in the material disclosed hereon. This drawing is issued in confidence for your information only and may not be reproduced or used to manufacture anything shown hereon without permission from THE TECHNICAL MATERIEL CORPORATION to the user. This drawing is loaned for your assistance and is subject to recall at any time.

Property of:
 THE TECHNICAL MATERIEL CORPORATION
 MAMARONECK, NEW YORK

MARK I SERIES

REQ. PER UNIT	MODEL	PROJECT NO.	ASSY. NO.	DATE
1	GSB-1	459		6-18-56

REQ. ITEM	PART NO.	DESCRIPTION	SYMBOL
1	7 FC-100-6	CLIP, COMPONENT	
1	6 EX-100-1	EXLET, FLAT FLANGE	
2	5 NTH02AB 3CG	NUT, HEX	
2	4 LW503 MRC	WASHER, LOCK	
2	3 QCF5034B C4	SCREW, MACHINE	
1	2 FS-102-1	FASTENER	
1	1 MS-246	MAIN CHASSIS (NO DWG.)	

STOCK SIZE		THE TECHNICAL MATERIEL CORP.	
ALUMINUM		MAMARONECK, NEW YORK	
MATERIAL		MAIN CHASSIS ASSEMBLY	
WEIGHT PER PC.		GSB-1	
5052 H32		GWB	
TYPE & TEMPER		DRAWN	
		ELEC. DES. APP.	
		MECH. DES. APP.	
HEAT TREAT. SPEC.		CHECKED	
		FINAL APPROVAL	
S-404 IRIDIUM		A-1304 F	
FINISH & SPEC. NO.			

A-1304 F