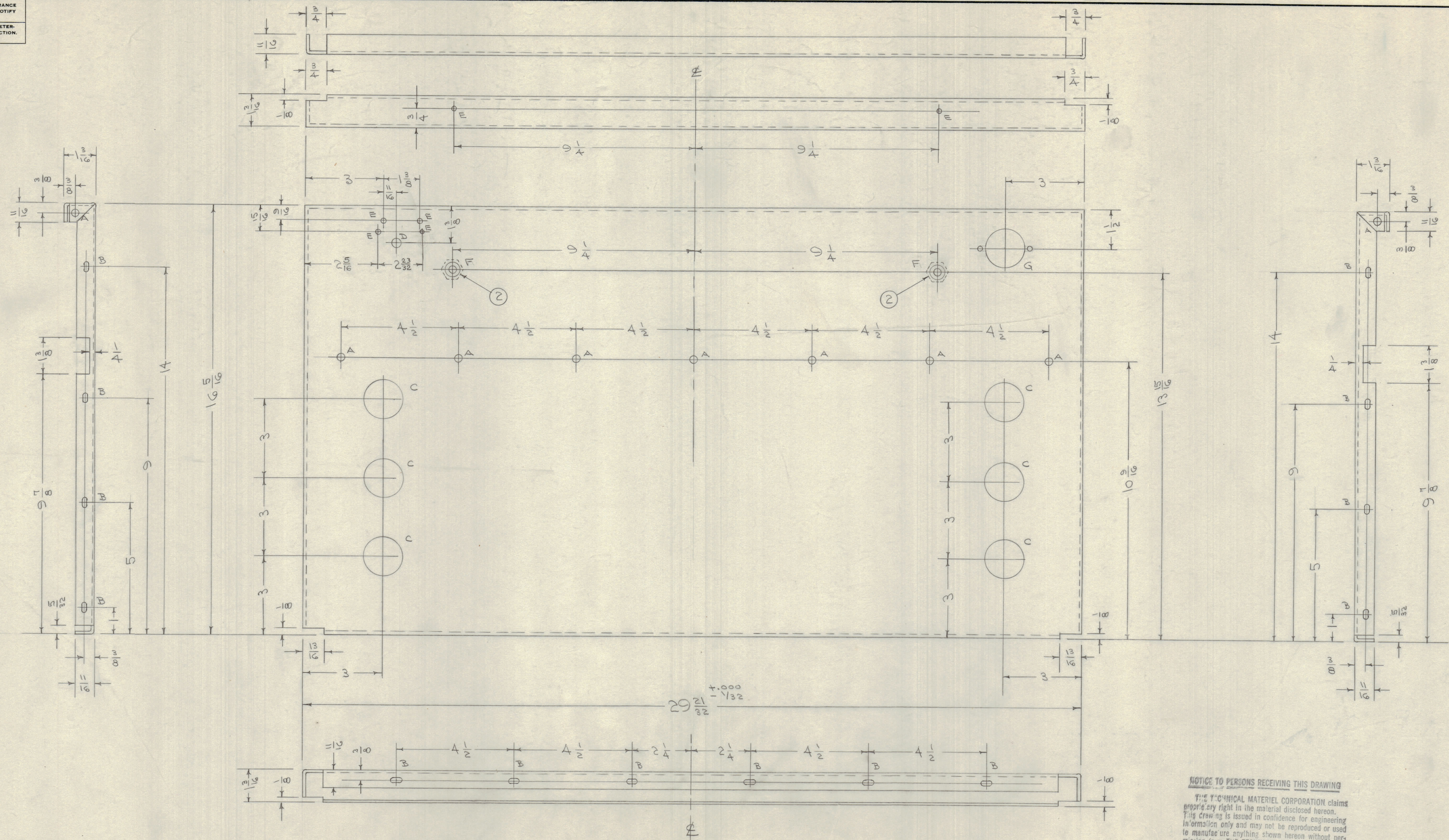
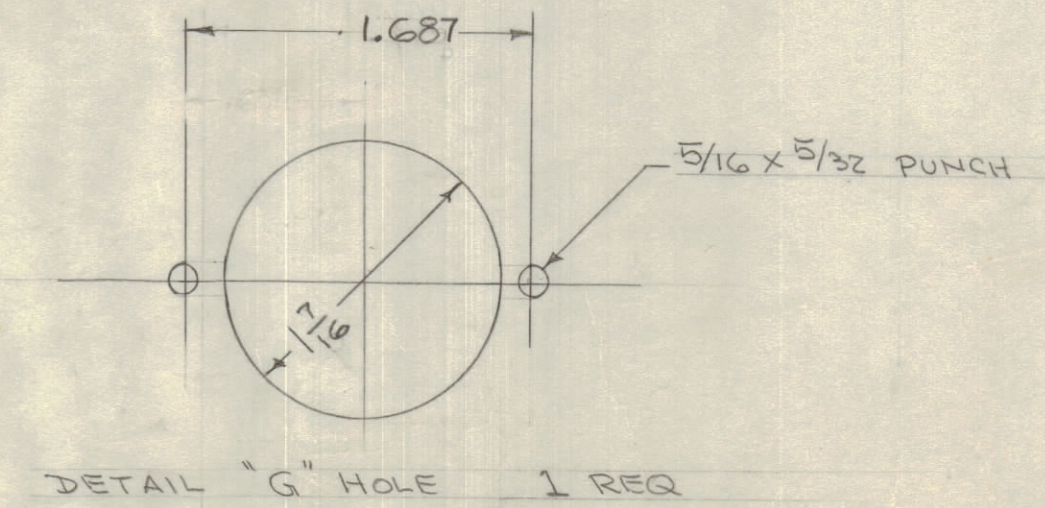
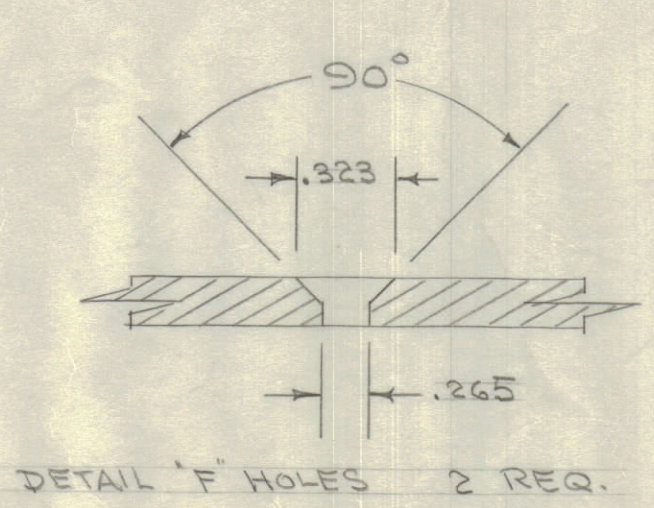


IF IT IS FOUND DESIRABLE TO CHANGE ANY TOLERANCE OR OTHER DETAIL SPECIFIED ON THIS DRAWING NOTIFY THE PURCHASER PROMPTLY.
 MAXIMUM ALLOWABLE TOLERANCES HAVE BEEN DETERMINED AND DEVIATIONS WILL BE CAUSE FOR REJECTION. REMOVE ALL BURRS AND SHARP EDGES.



- A - 13/64 (.203) DIA. 9 HOLES REQ.
- B - 13/64 x 13/32 14 SLOTS "
- C - 1/2 (1.500) DIA. 6 HOLES "
- D - 5/16 (.312) " 1 " "
- E - 1/64 (.156) " 6 " "



NOTICE TO PERSONS RECEIVING THIS DRAWING
 THE TECHNICAL MATERIEL CORPORATION claims proprietary right in the material disclosed hereon. This drawing is issued in confidence for engineering information only and may not be reproduced or used to manufacture anything shown hereon without permission from THE TECHNICAL MATERIEL CORPORATION to the user. This drawing is loaned for mutual assistance and is subject to recall at any time.
 Property of:
 THE TECHNICAL MATERIEL CORPORATION
 MAMARONECK, NEW YORK

ISSUE	ITEM	CHANGED FROM	DATE	CN. NO.	DRAFTS	CHECKER	ENG. APP.
1	5-404 IRIDITE WAS 1/64		10/1	1001	AS		EMN
2	5-101 CAUSTIC DIP		10/1	1001	AS		EMN
3	"C" HOLES 1/2 D. WAS 1 1/2 D.		10/1	1001	AS		EMN
4	ITEM "G" WAS SLOTTED		10/1	1001	AS		EMN
5	2 1/2 WAS 1 1/2		10/1	1001	AS		EMN
6	2 1/16 WAS 2 1/32		10/1	1001	AS		EMN

TOLERANCES:
 ALL DEC. DIM. ±
 OTHERS FRAC. DIM. ± 1/64
 ANGULAR DIM. ±

SCALE:
 DRILL, PUNCH, COMMERCIAL STOCK SIZES AND MANUFACTURERS TOLERANCES ARE NOT INCLUDED.

REQ. PER UNIT	MODEL	PROJECT NO.	ASSY. NO.	DATE
1	A959	E-500-D		4-23-36

REQ. ITEM	PART NO.	DESCRIPTION	SYMBOL
2	SM-107-34	INSERT, HEX.	
1	MS-924	CHASSIS (NO DRAWING)	
.081 THE TECHNICAL MATERIEL CORP. MAMARONECK, NEW YORK			
ALUMINUM MAIN CHASSIS			
MATERIAL		WEIGHT PER PC.	
3052 H 32		A959	
TYPE & TEMPER		CDD 4123156	
HEAT TREAT. SPEC.		DRAWN	
CHECKED		ELEC. DES. APP.	
FINISH & SPEC. NO.		MECH. DES. APP.	
A-1267 C		FINAL APPROVAL	

A-1267 C