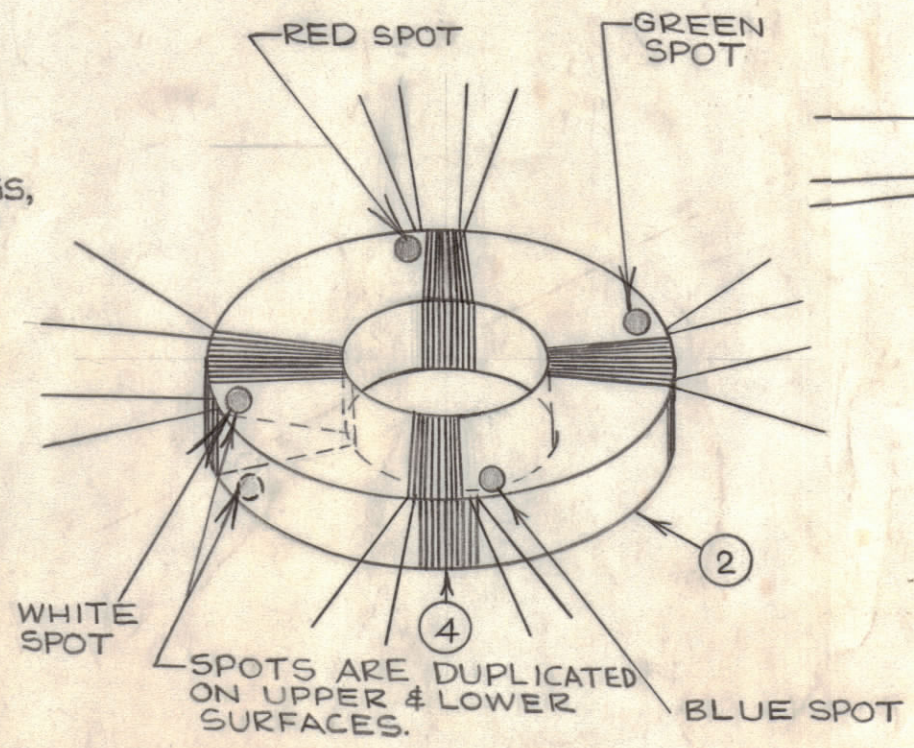


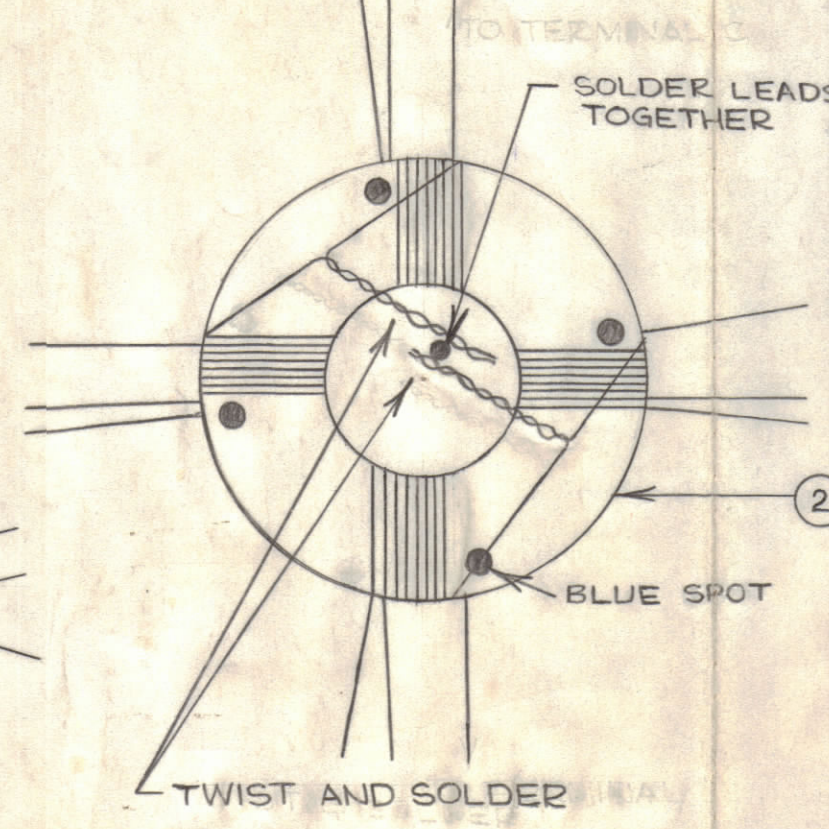
IF IT IS FOUND DESIRABLE TO CHANGE ANY TOLERANCE OR OTHER DETAIL SPECIFIED ON THIS DRAWING NOTIFY THE PURCHASER PROMPTLY.		DIMENSIONS IN INCHES UNLESS OTHERWISE SPECIFIED					
MAXIMUM ALLOWABLE TOLERANCES HAVE BEEN DETERMINED AND DEVIATIONS WILL BE CAUSE FOR REJECTION. REMOVE ALL BURRS AND SHARP EDGES.							
ISSUE	ITEM	CHANGED FROM	DATE	CN. NO.	DRAFTS	CHECKER	ENG. APP.
C	1	REDRAWN & REVISED	8-28-61	5457	A.S.	RU	W.M.
D	2	11/64" DIAM. WAS 11/16" DIAM.	9-25-61	5619	H.S.	LB	
E		ADD POTTING COLOR NT.	5-17-72	20690	BE	EJ	

REQ.	ITEM	PART NO.	DESCRIPTION	SYMBOL
1	1	A 1132	TERMINAL BOARD ASSEMBLY	
1	2	CL10001-2	CORE	
2	3	WL 100-4	WIRE, BUS	
64	4	WL10007-1	WIRE	
A/R	5	BS 100	SOLDER, SOFT	
A/R	6	GL10001	RADIO CEMENT	
165g	7	GL-10002	POTTING COMPOUND	

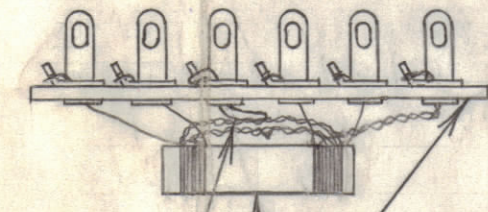
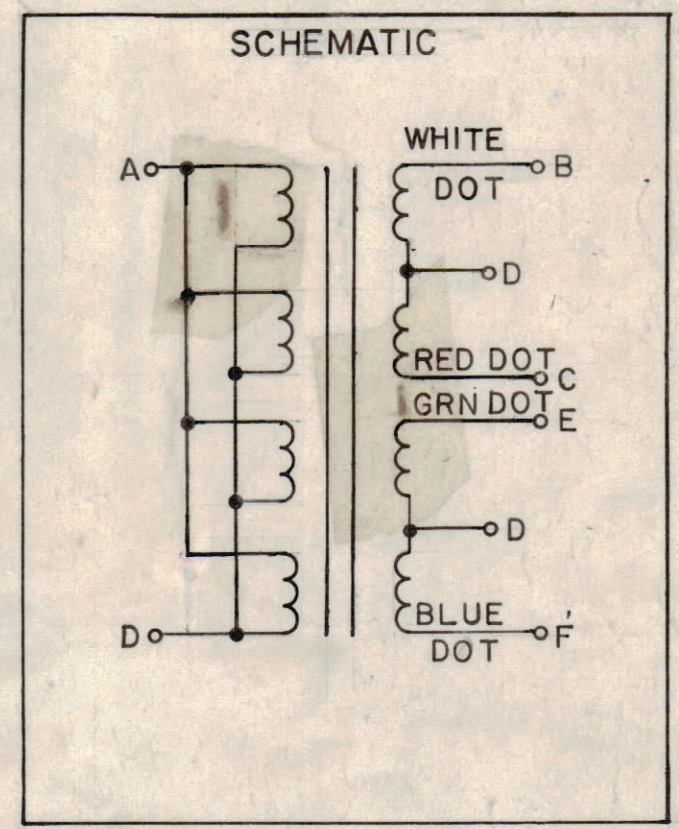
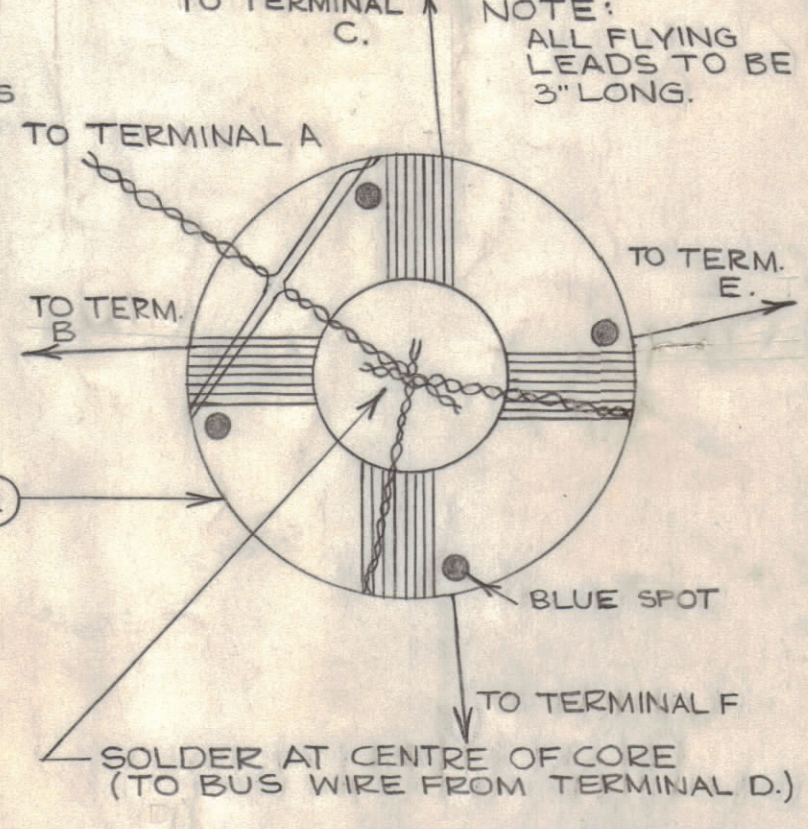
NOTE:
FOUR IDENTICAL WINDINGS, EQUALLY SPACED AROUND CORE, EACH 5 TURNS BIFILAR, CLOSEWOUND. FINISHED WINDINGS TO BE COATED LIBERALLY WITH ITEM G.



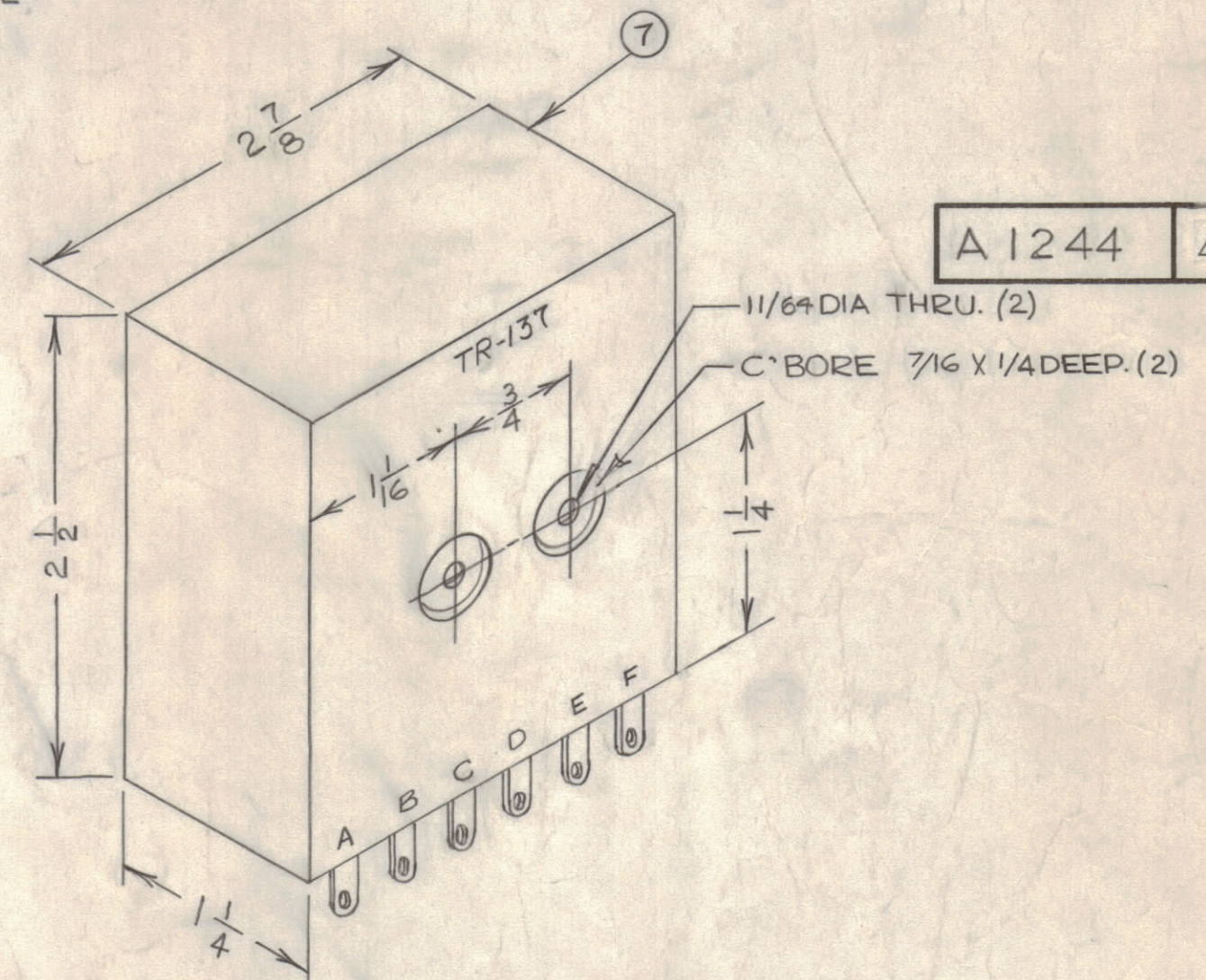
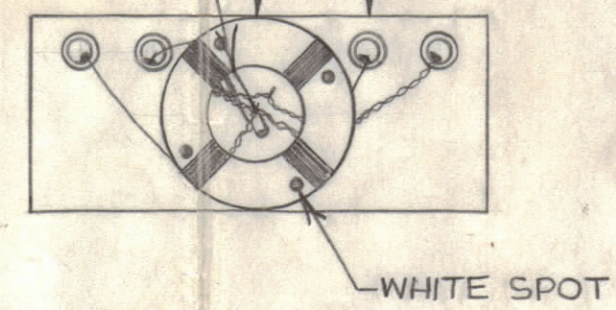
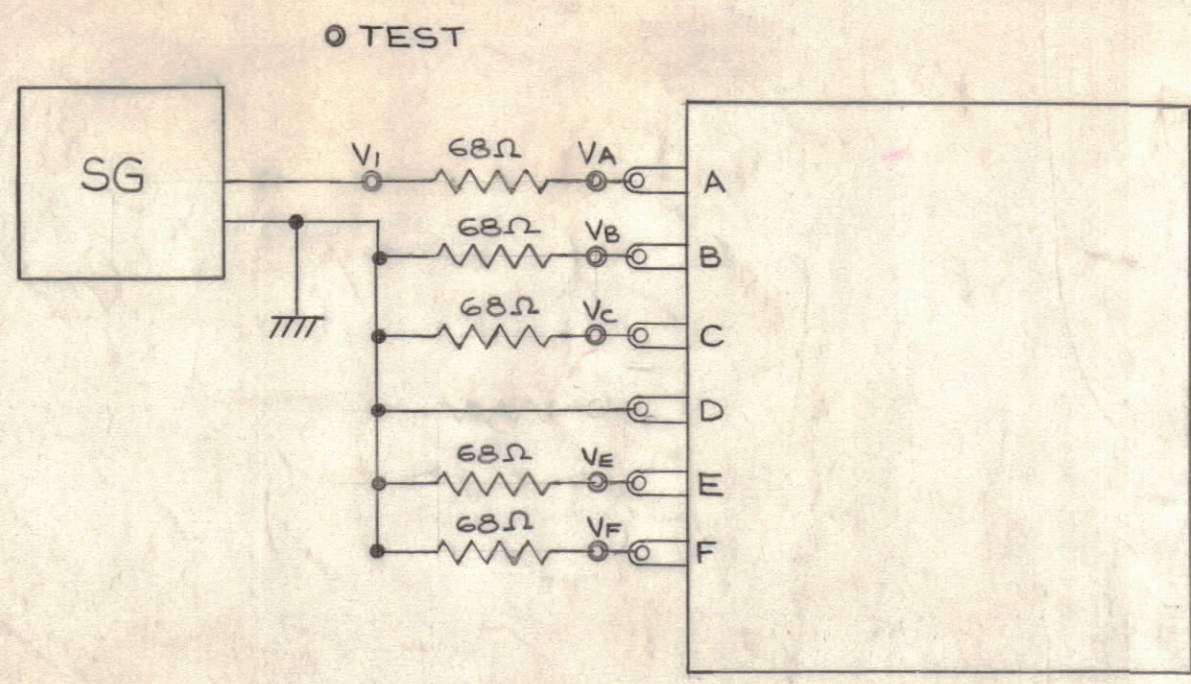
STAGE 1
ALL WIRES TO BE 1/16" AWAY FROM SURFACE OF CORE,



STAGE 2
ALL WIRES TO BE 1/8" AWAY FROM SURFACE OF CORE



NOTE: FOR POTTING, SEE SPECIFICATION S-10072



A 1244 E

NOT TO BE RELEASED
W/O AUTHORIZATION
AUTH. BY _____
DATE: _____

NOTE: STAMPING TO BE WHITE & 1/8" HIGH GOTHIC. COLOR OF POTTING RED.

Mc/s	V ₁	V _A	V _B	V _C	V _E	V _F
2	1.00	0.5 ^{+0.01} _{-0.04}	0.25 ^{+0.01} _{-0.015}	0.25 ^{+0.01} _{-0.015}	0.25 ^{+0.02} _{-0.005}	0.25 ^{+0.02} _{-0.005}
8	1.00	0.5 ^{+0.01} _{-0.04}	0.25 ^{+0.01} _{-0.015}	0.25 ^{+0.01} _{-0.015}	0.25 ^{+0.02} _{-0.005}	0.25 ^{+0.02} _{-0.005}
30	1.00	0.5 ^{+0.01} _{-0.04}	0.25 ^{+0.01} _{-0.015}	0.25 ^{+0.01} _{-0.015}	0.25 ^{+0.02} _{-0.005}	0.25 ^{+0.02} _{-0.005}

TOP SECURITY

TOLERANCES	SCALE: NTS
ALL OTHERS	DRILL, PUNCH, COMMERCIAL STOCK SIZES AND MANUFACTURERS TOLERANCES ARE NOT INCLUDED.

HFD	E 2360	JULY 14, 1961
MODEL	PROJECT NO.	DATE

STOCK SIZE		TMC () LIMITED OTTAWA ONTARIO	
MATERIAL		TRANSFORMER	
WEIGHT PER PC.		TR 137	
TYPE & TEMPER		JPC	R.W.J.
HEAT TREAT. SPEC.		DRAWN	ELEC. DES. APP.
FINISH & SPEC. NO.		CHECKED	MECH. DES. APP.
		FINAL APPROVAL	
		A1244 E	