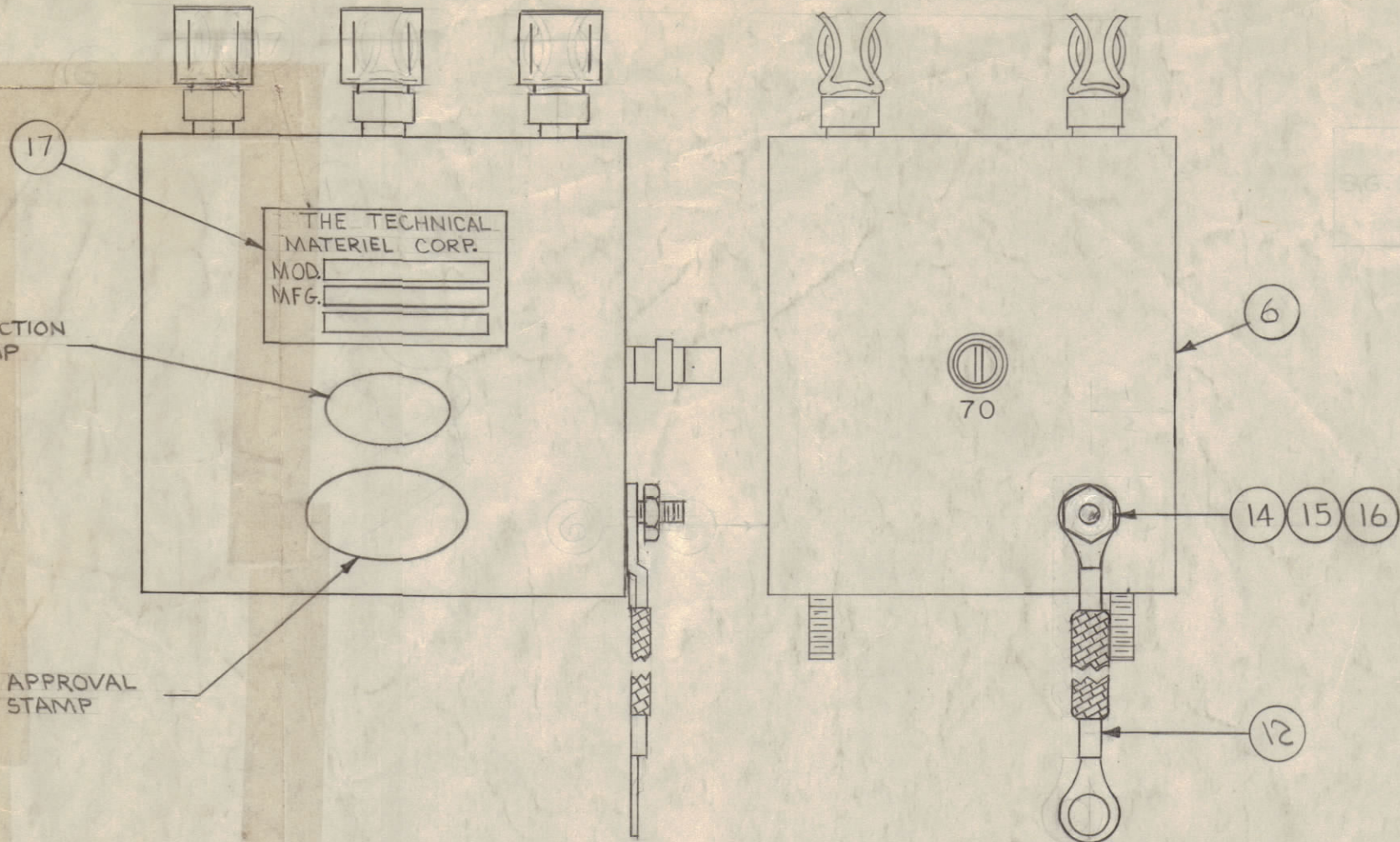
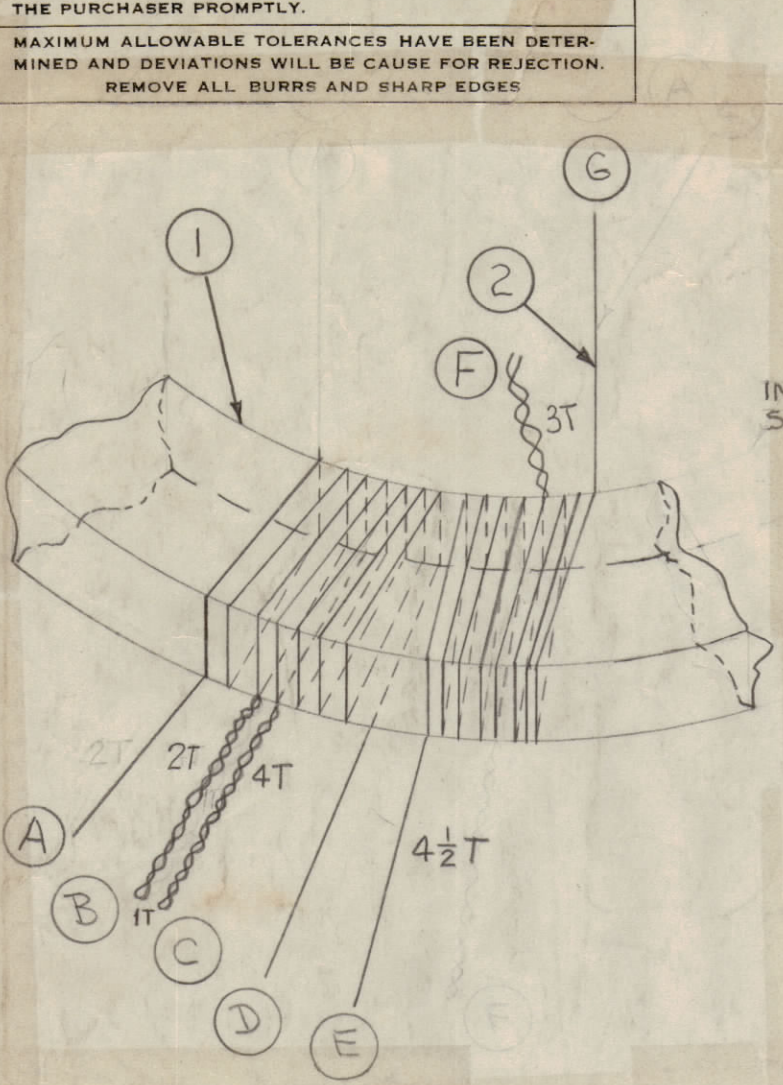


IF IT IS FOUND DESIRABLE TO CHANGE ANY TOLERANCE OR OTHER DETAIL SPECIFIED ON THIS DRAWING NOTIFY THE PURCHASER PROMPTLY.
 MAXIMUM ALLOWABLE TOLERANCES HAVE BEEN DETERMINED AND DEVIATIONS WILL BE CAUSE FOR REJECTION. REMOVE ALL BURRS AND SHARP EDGES.

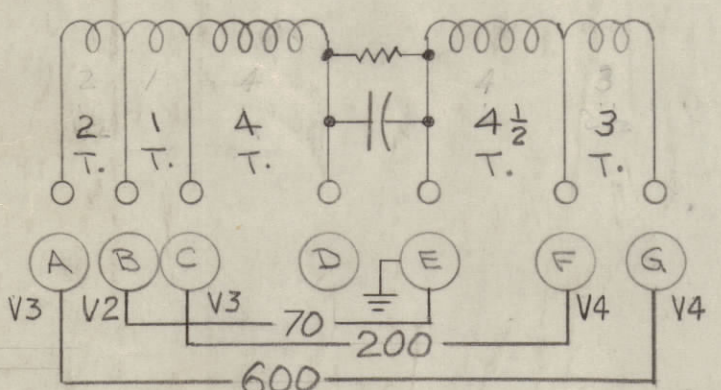


NOT TO BE RELEASED
 W/O AUTHORIZATION
 AUTH. BY _____
 DATE: _____

VOLTAGES SHOULD FALL WITHIN THE LIMITS
 INDICATED BELOW

TIME	V1	V2	V3	V4
20	1.0	15.505	62.26	0.78
50	1.0	16.534	61.36	0.78
80	1.0	15.423	57.671	0.78

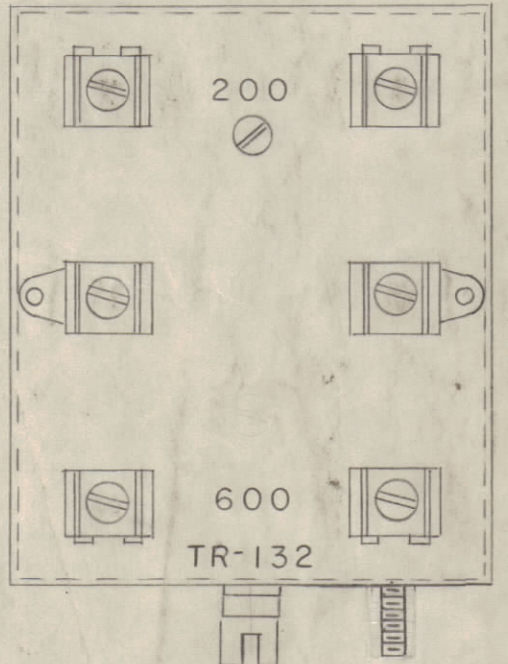
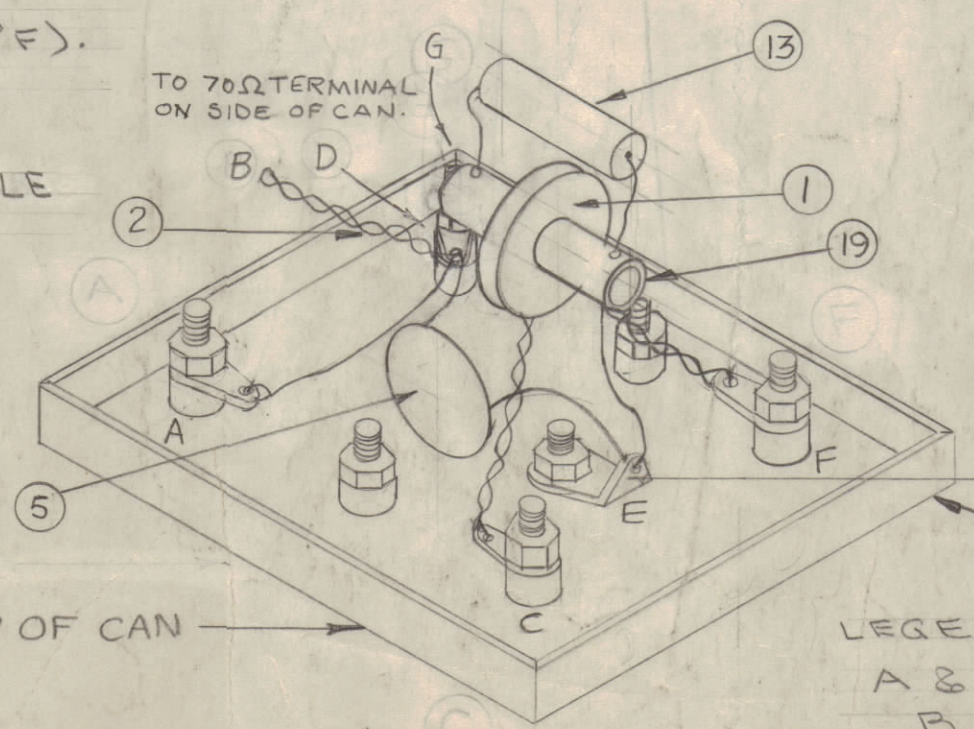
STEP 3
 1- MAKE CONNECTIONS AS BELOW.
 2- SOLDER COVER IN PLACE. CONNECT TO 70 OHM WINDING
 3- COAT COIL WITH IT-18 (SILICON RUBBER) & ALLOW TO HARDEN BEFORE POTTING.
 4- USING GL-106, POT TO WITHIN 3/8 OF TOP.
 5- SOLDER BOTTOM IN PLACE.
 6- SMOOTH ALL SEAMS.
 7- CLEAN CASE, FINISH TOP & SIDE WITH SH-15 SMOOTH GRAY ENAMEL. (DO NOT PAINT STUD END).
 8- STAMP AS SHOWN. 1/8 HIGH BLACK GOTHIC.



STEP 1 -
 WINDING - AS ABOVE - CLOSE WOUND.
 1- STAKE WINDING & LEADS TO COIL FORM WITH CEMENT (ITEM 3)
 2- COAT COIL WITH U-85. (ITEM 4)
 3- BAKE FOR 1 HOUR AT 150°C (300°F).
 4- ALLOW TO COOL AT ROOM TEMP.

NOTE:
 ALL LEADS TO BE AS SHORT AS POSSIBLE

STEP 2
 CONNECTIONS - AS SHOWN
 KEEP COIL & CAPACITOR AT LEAST 3/8" ABOVE COVER.



TEST AS PER S10140

A-1232 6

REQ.	ITEM	PART NO.	DESCRIPTION	SYMBOL
1	19	CF10012	COIL FORM	
X	18	GL10005	SILICON RUBBER	
1	17	NP 492	PLATE, IDENTIFICATION	
1	16	LWE08MRN	LOCKWASHER, EXTERNAL	
1	15	FW08MRN	WASHER, FLAT	
1	14	NTH0832BN10	NUT, HEXAGON	
1	13	RC 32GF103	RESISTOR, FIXED	
1	12	CA409-95-325	LEAD, ELECTRICAL	
1	11	NTH0440BC6	NUT, HEX.	
1	10	TE-104-1	LUG, LOCKING	
1	9	SC8864A28CA	SCREW, MACHINE	
X	8	BS-100	SOLDER, SOFT	
X	7	GL-106	COMPOUND, POTTING	
1	6	BX-148	CASE & COVER ASSY.	
1	5	CC-10006-1	CAPACITOR, FIXED	
X	4	GL-104-2	INSULEX, U-85	
X	3	GL-103	CEMENT	
X	2	WI-122-30	WIRE, COTENAMEL #26	
1	1	CI-10010-1	CORE, TOROIDAL	

ISSUE	ITEM	CHANGED FROM	DATE	CN. NO.	DRAFTS	CHECKER	ENG. APP.
G		COMPLETELY REV.	11-6-67	18592	M.E.	J.H.	K.H.
F		DELE NOTE 6 & ON NOTE. ADD SIDE VIEW & STAMPS & IT 14 TO 17. IT 12 WAS FRA 1151	14-66	1683	R.M.	J.P.	J.P.
E		RESIST. VALVE... NOTE ADD VOLT. SHOULD FALL... NOTE ADD RF VOLTS CHARTS REVISED	9.15.64	12353	h.s.	@	J.P.
D	1	SEE EMN #10949	2/26/64	10949	A.M.	J.H.	M.K.
C	1	TOL. WAS 4% MODIFIED CHARTS ACCORD.	4/21/60	2183	J.H.	J.H.	D.D.
B	3	ITEM 6 WAS A1115	10/23/6	2	Q.S.	J.H.	J.C.
A	1	215°F WAS 300°F	4/24/56	1	J.H.	J.H.	J.P.

TOP OF CAN

LEGEND -
 A & G - 600 OHM TERMINALS
 B - 70 OHM OUTPUT
 C & F - 200 OHM TERMINALS
 E - GROUND

REQ PER UNIT	MODEL	PROJECT NO.	ASSY. NO.	DATE
1	RAC-30A		A-1176	2-2-56
				USED ON

THE TECHNICAL MATERIEL CORP.			
MAMARONECK, NEW YORK			
TRANSFORMER ASSY.			
TR-132			
STOCK SIZE		TYPE & TEMPER	
		STD 2-2-56	
MATERIAL		WEIGHT PER PC.	
HEAT TREAT. SPEC.		FINISH & SPEC. NO.	