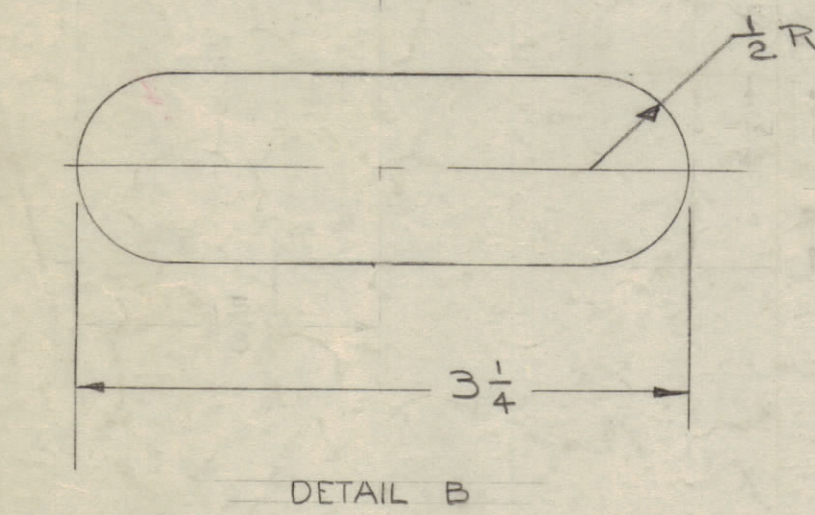
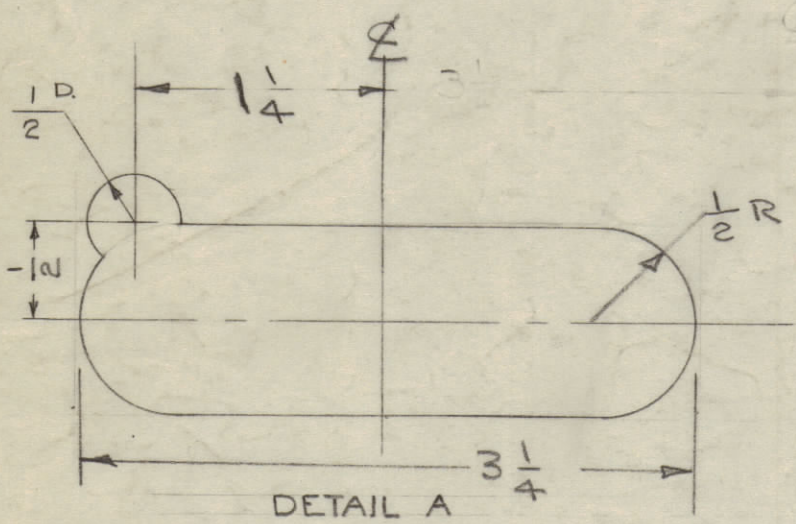


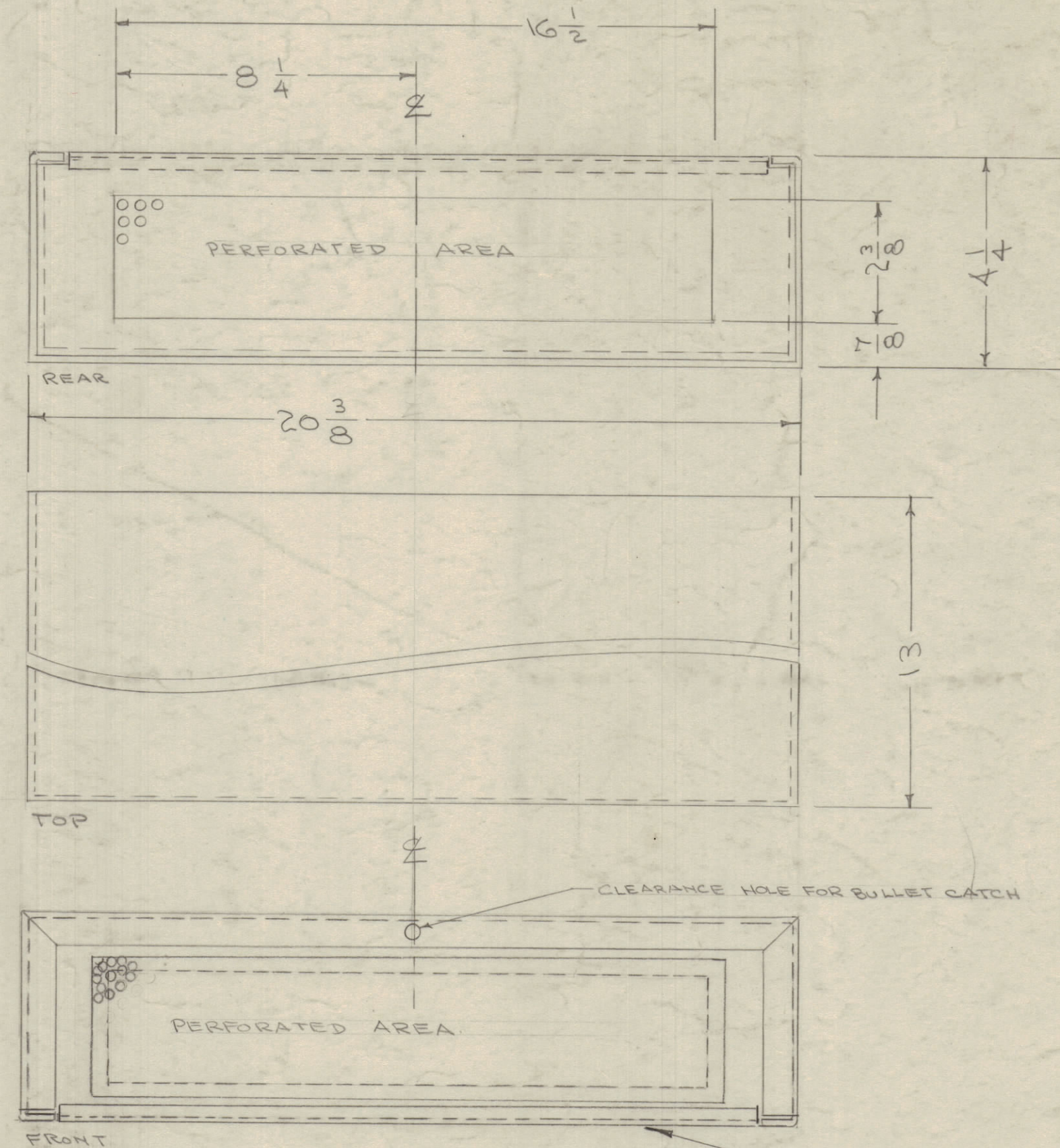
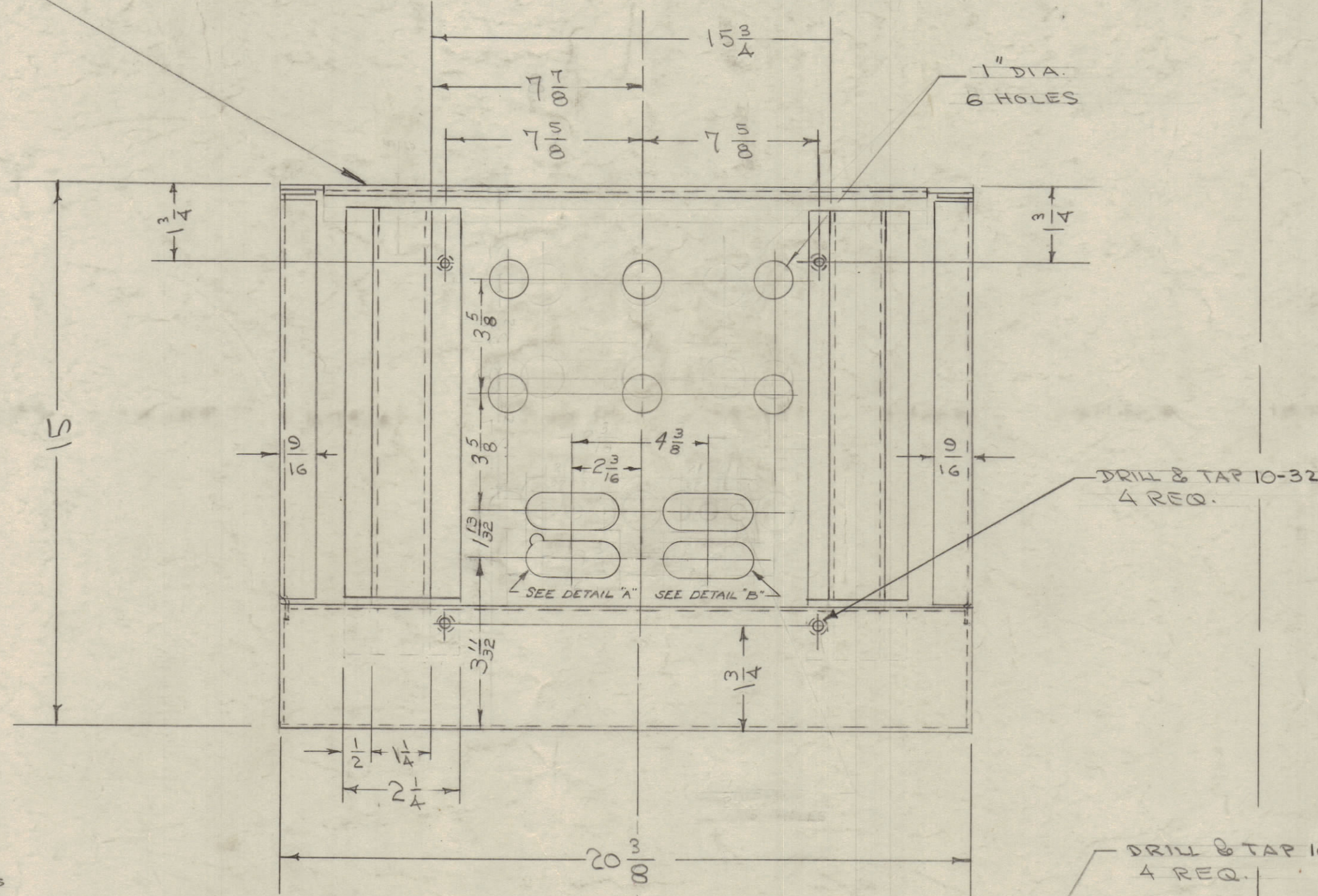
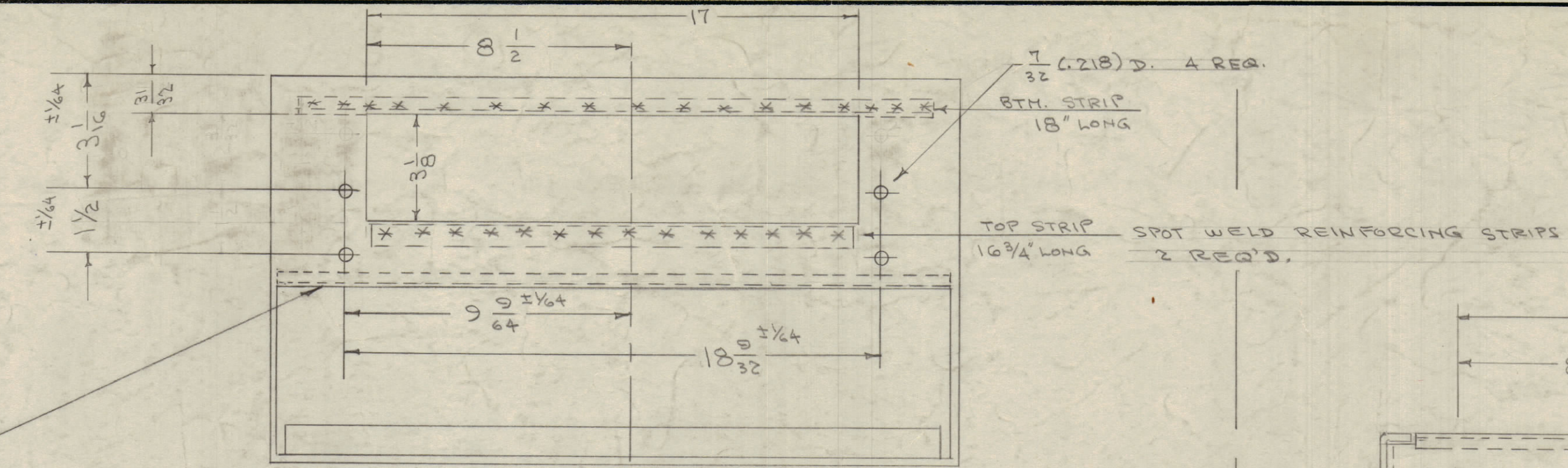
IF IT IS FOUND DESIRABLE TO CHANGE ANY TOLERANCE OR OTHER DETAIL SPECIFIED ON THIS DRAWING NOTIFY THE PURCHASER PROMPTLY.
 MAXIMUM ALLOWABLE TOLERANCES HAVE BEEN DETERMINED AND DEVIATIONS WILL BE CAUSE FOR REJECTION. REMOVE ALL BURRS AND SHARP EDGES



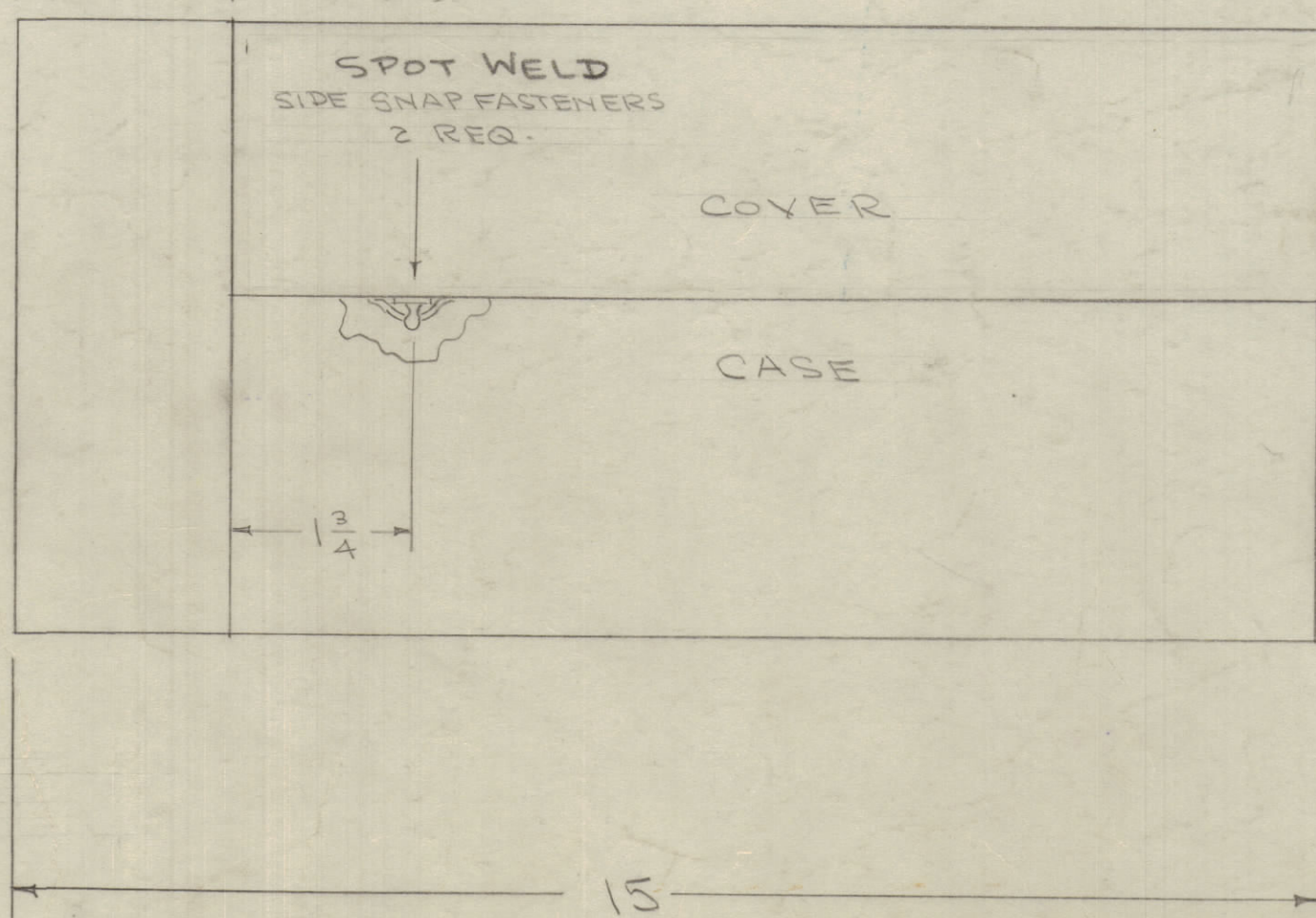
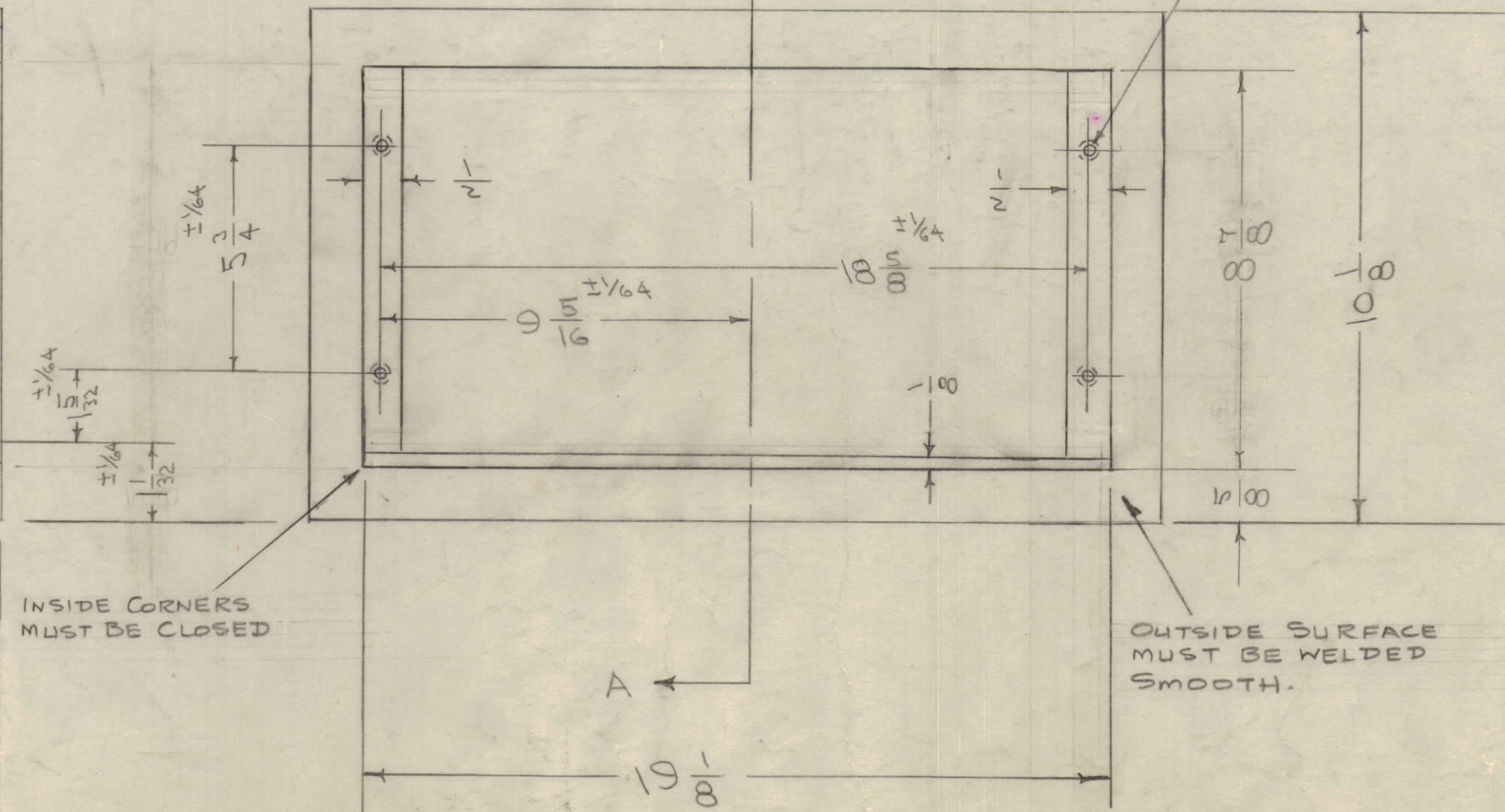
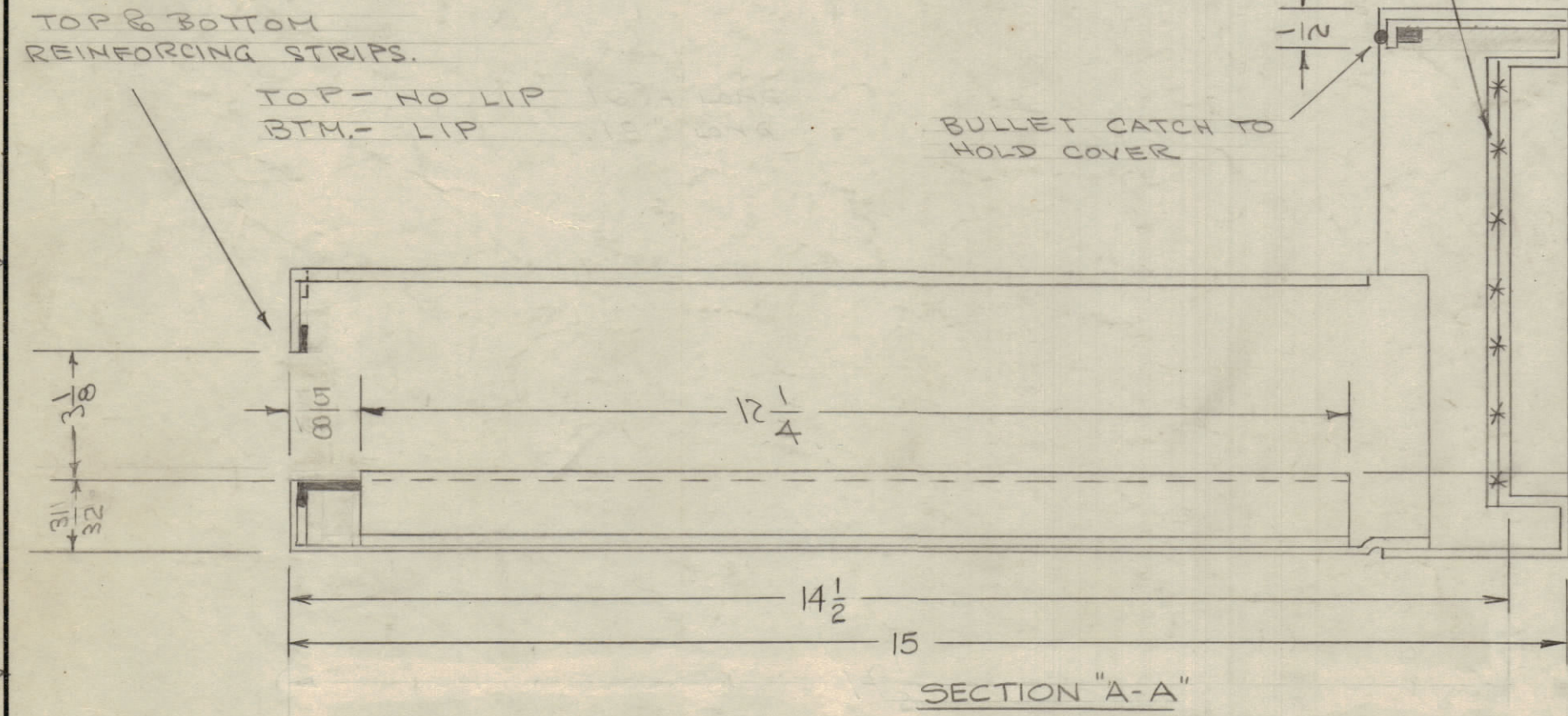
NOTE - FINISH

ALL SURFACES - S-114 ZINC CHROMATE PRIMER
 INSIDE " - S-220 RAUF GRAY SEMI GLOSS ENAMEL
 OUTSIDE " - S-254 " " WRINKLE "

REAR LIP FOLDED OVER



SPOTWELD REINFORCING STRIPS FOR DOUBLE TAPPING THICKNESS 2 REQ.



SLIDE HINGES ON REAR 2 REQUIRED

NOTICE TO PERSONS RECEIVING THIS DRAWING
 THE TECHNICAL MATERIEL CORPORATION claims proprietary right in the material disclosed herein. This drawing is issued in confidence for engineering information only and may not be reproduced or used to manufacture anything shown hereon without permission from THE TECHNICAL MATERIEL CORPORATION to the user. This drawing is loaned for mutual assistance and is subject to recall at any time.
 Property of:
 THE TECHNICAL MATERIEL CORPORATION
 MAMARONECK, NEW YORK

F	1	DRILL & TAP FOR 10-32 WAS 8-32	5-25-52	GG93	VR.R.		
E	1	MODIFIED VIEW, CORR'D "E" & 1/8 WAS 1/4	4/1/52	5	1/10		
D	1	TWO NOTES ADDED	3/25/52	4	16		
C	1	SLOTS WERE "D HOLES"	3/25/52	3	16		
B	1	NOTE ADDED (REAR LIP FOLDED OVER)	1/5/52	2	16		
A	1	TRACK PICTORIAL ON BTM. VIEW CLARIFIED	1/24/52	1	16		
ISSUE	ITEM	CHANGED FROM	DATE	CN. NO.	DRAFTS	CHECKER	ENG. APP.
TOLERANCES		SCALE:					
ALL	DEC. DIM. ±	DRILL, PUNCH, COMMERCIAL STOCK					
OTHERS	FRAC. DIM. ± 1/32	SIZES AND MANUFACTURERS					
	ANGULAR DIM. ±	TOLERANCES ARE NOT INCLUDED.					

1	RTC			1-31-56
1	GPR			6-20-55
REQ PER UNIT	MODEL	PROJECT NO.	ASSY. NO.	DATE

REQ. ITEM	PART NO.	DESCRIPTION	SYMBOL
.062		THE TECHNICAL MATERIEL CORP. MAMARONECK, NEW YORK	
STOCK SIZE			
STEEL		CASE & COVER	
MATERIAL	WEIGHT PER PC.		
MILD			
TYPE & TEMPER	CPD 6-30-55		
	DRAWN	ELEC. DES. APP.	MECH. DES. APP.
HEAT TREAT. SPEC.	CHECKED	FINAL APPROVAL	
SEE NOTE	SUPERSEDES		
	8-712	1/31/56	A-1228 F
FINISH & SPEC. NO.			

A-1228 F