

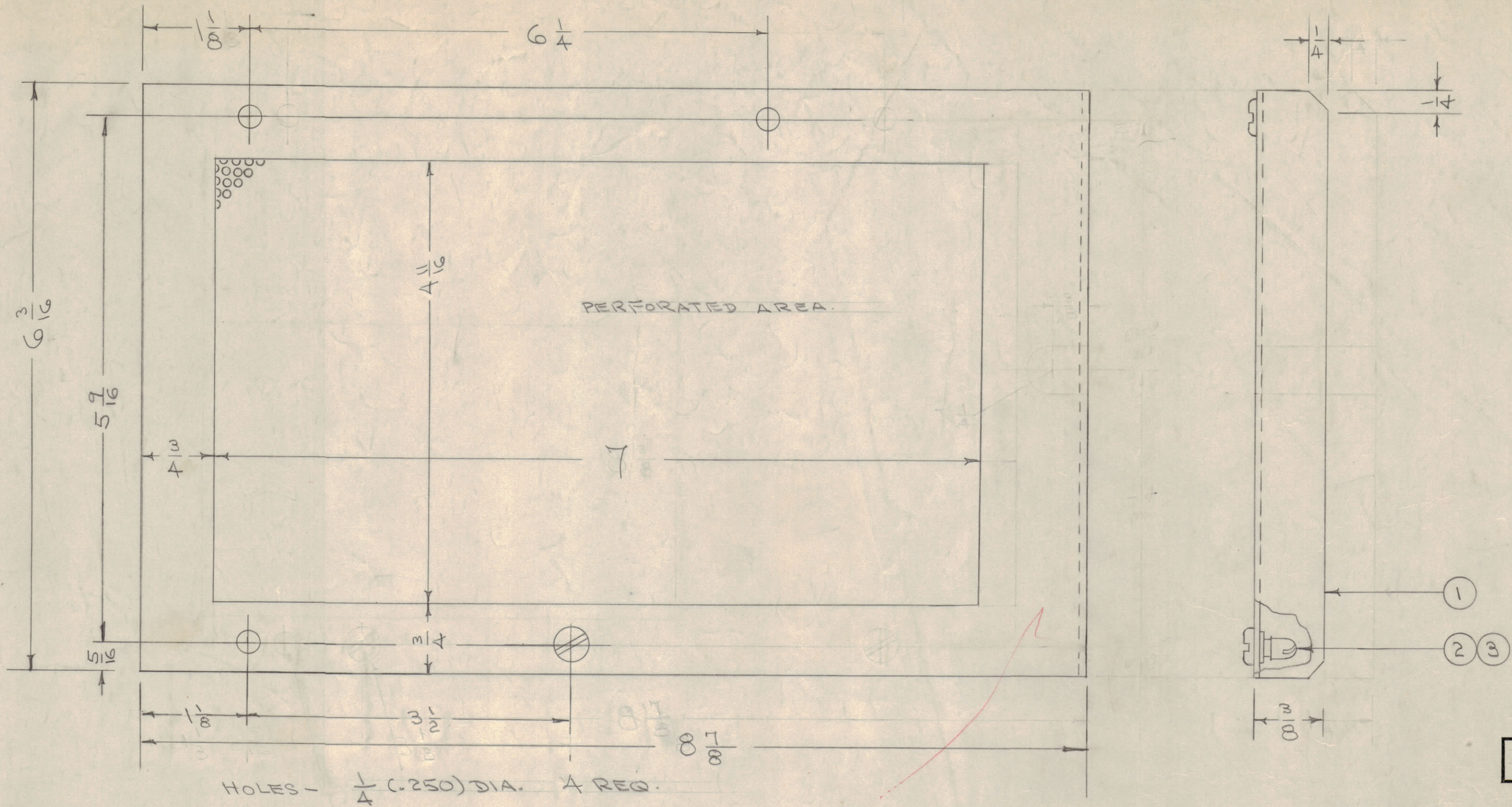
IF IT IS FOUND DESIRABLE TO CHANGE ANY TOLERANCE OR OTHER DETAIL SPECIFIED ON THIS DRAWING NOTIFY THE PURCHASER PROMPTLY.

MAXIMUM ALLOWABLE TOLERANCES HAVE BEEN DETERMINED AND DEVIATIONS WILL BE CAUSE FOR REJECTION. REMOVE ALL BURRS AND SHARP EDGES

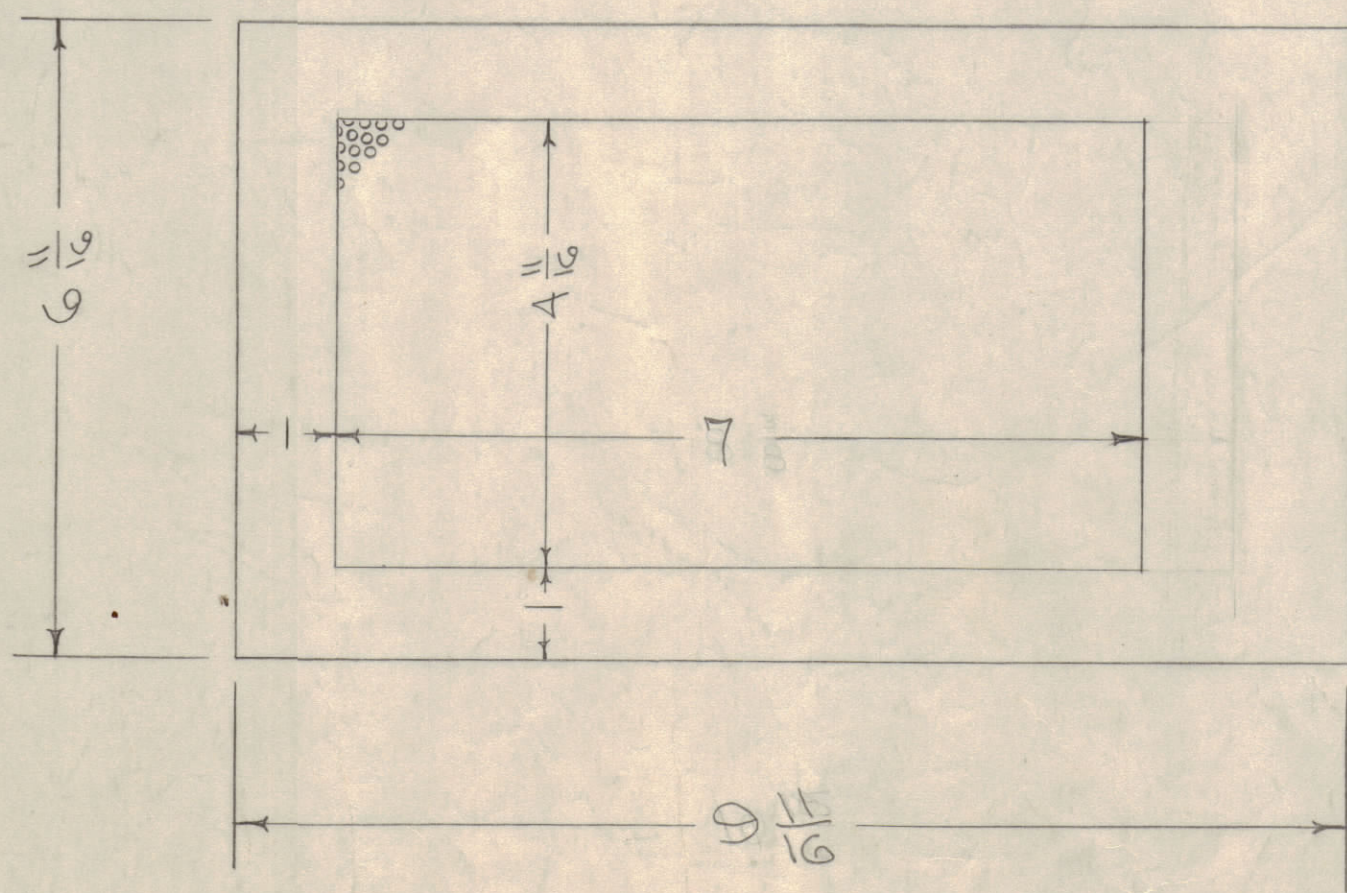
NOTICE TO PERSONS RECEIVING THIS DRAWING

THE TECHNICAL MATERIEL CORPORATION claims proprietary right in the material disclosed hereon. This drawing is issued in confidence for engineering information only and may not be reproduced or used to manufacture anything shown hereon without permission from THE TECHNICAL MATERIEL CORPORATION to the user. This drawing is loaned for mutual assistance and is subject to recall at any time.

Property of:
THE TECHNICAL MATERIEL CORPORATION
MAMARONECK, NEW YORK



A-1227 C



C	1	S404 IRIDITE WAS S/DI - CAUSTIC D/D	12-9	1001	P	EMN	
B	1	COMPLETE REVISION	9/1/56	2	GDG	WJC	
A	2	LENGTH CHANGED	6/15/56	1	HADE	WJC	
A	1	SLOT ADDED					
ISSUE	ITEM	CHANGED FROM	DATE	CN. NO.	DRAFTS	CHECKER	ENG. APP.
TOLERANCES		SCALE:					
ALL OTHERS	DEC. DIM. \pm FRAC. DIM. \pm Y64 ANGULAR DIM. \pm	DRILL, PUNCH, COMMERCIAL STOCK SIZES AND MANUFACTURERS TOLERANCES ARE NOT INCLUDED.					

1	RTF-2	MULT.	11-20-58
1	RTF		1-26-55
REQ PER UNIT	MODEL	PROJECT NO.	ASS'Y. NO.
USED ON			

A	3	FS-109-3	RING	
A	2	FS-110-1	STUD	
1	1	MS-798	COVER (NO DRAWING)	
REQ. ITEM	PART NO.	DESCRIPTION		SYMBOL
.051		THE TECHNICAL MATERIEL CORP.		
STOCK SIZE		MAMARONECK, NEW YORK		
ALUMINUM		COVER PLATE, MULTIPLIER		
MATERIAL		WEIGHT PER PC.		
52S H32				
TYPE & TEMPER		CDD 426155 066 4/27/56 WJC		
		DRAWN		
		ELEC. DES. APP.		
		MECH. DES. APP.		
HEAT TREAT. SPEC.		CHECKED		
		FINAL APPROVAL		
S404 YEL-IRIDITE		A-1227 C		
FINISH & SPEC. NO.				