

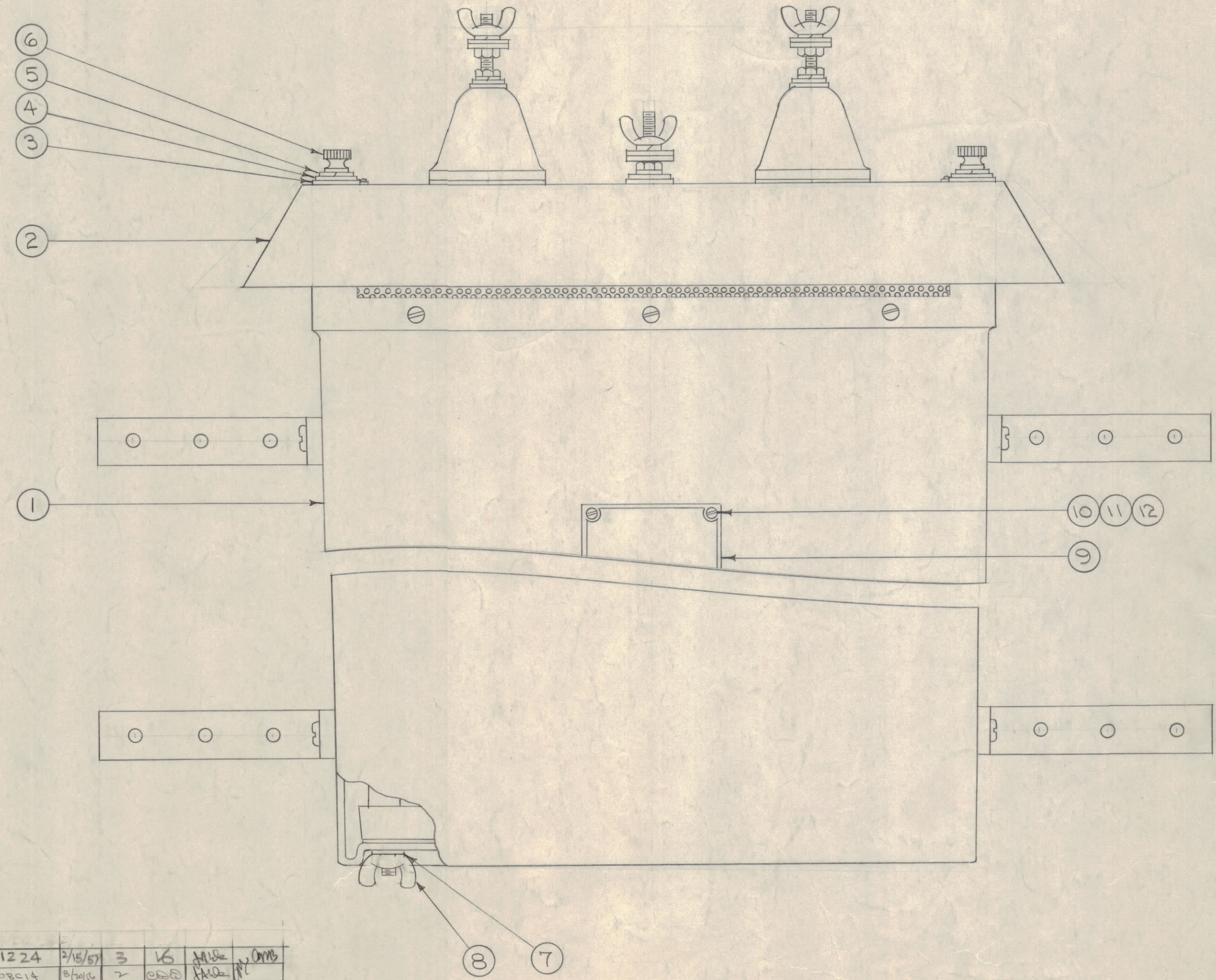
IF IT IS FOUND DESIRABLE TO CHANGE ANY TOLERANCE OR OTHER DETAIL SPECIFIED ON THIS DRAWING NOTIFY THE PURCHASER PROMPTLY.

MAXIMUM ALLOWABLE TOLERANCES HAVE BEEN DETERMINED AND DEVIATIONS WILL BE CAUSE FOR REJECTION. REMOVE ALL BURRS AND SHARP EDGES

NOTICE TO PERSONS RECEIVING THIS DRAWING

THE TECHNICAL MATERIEL CORPORATION claims proprietary right in the materiel disclosed hereon. This drawing is issued in confidence for engineering information only and may not be re-produced or used to manufacture anything shown hereon without permission from THE TECHNICAL MATERIEL CORPORATION to the user. This drawing is loaned for mutual assistance and is subject to recall at any time.

Property of:
THE TECHNICAL MATERIEL CORPORATION
 MAMARONECK, NEW YORK



A-1225 C

4	12	NTH0256BC6	NUT, HEX
4	11	LWE02MRC	WASHER, LOCK
4	10	SCBS0256BCA	SCREW, MACHINE
1	9	NP-176-1	NAME PLATE
2	8	WT-110-2520BC	NUT, WING
2	7	LWE25MRC	WASHER, LOCK
2	6	SC-128-102A-8	SCREW, KNURLED HEAD
2	5	LWS10MRC	WASHER, LOCK
2	4	FW10MRC	WASHER, FLAT
2	3	GA-137-2	GASKET
1	2	A-137B	COVER ASSEMBLY
1	1	A-1223	CASE ASSEMBLY

C	1	ITEM 2 WAS A-1224	2/15/57	3	16	JMB	AMB
B	1	ITEM 8 WAS WASHERS LORCIA	2/15/56	2	16	JMB	AMB
A	1	ITEM 3 WAS RY-113	2/11/56	1	16	JMB	AMB
ISSUE	ITEM	CHANGED FROM	DATE	CN. NO.	DRAFTS	CHECKER	ENG. APP.

TOLERANCES

ALL OTHERS DEC. DIM. ±
 FRAC. DIM. ±
 ANGULAR DIM. ±

SCALE:

DRILL, PUNCH, COMMERCIAL STOCK SIZES AND MANUFACTURERS TOLERANCES ARE NOT INCLUDED.

1	TER-3500			1-24-56
REQ PER UNIT	MODEL	PROJECT NO.	ASS'Y. NO.	DATE

REQ.	ITEM	PART NO.	DESCRIPTION	SYMBOL
THE TECHNICAL MATERIEL CORP.				
MAMARONECK, NEW YORK				
FINAL ASSEMBLY				
STOCK SIZE		TER-3500		
MATERIAL		TER-3500		
WEIGHT PER PC.				
TYPE & TEMPER		CSG 1-24-56	ARB	JMB
HEAT TREAT. SPEC.		DRAWN	ELEC. DES. APP.	MECH. DES. APP.
FINISH & SPEC. NO.		JMB	WDC	
		CHECKED	FINAL APPROVAL	
		Ref. Dwg. A-1220 (1 size) Customers		A-1225 C