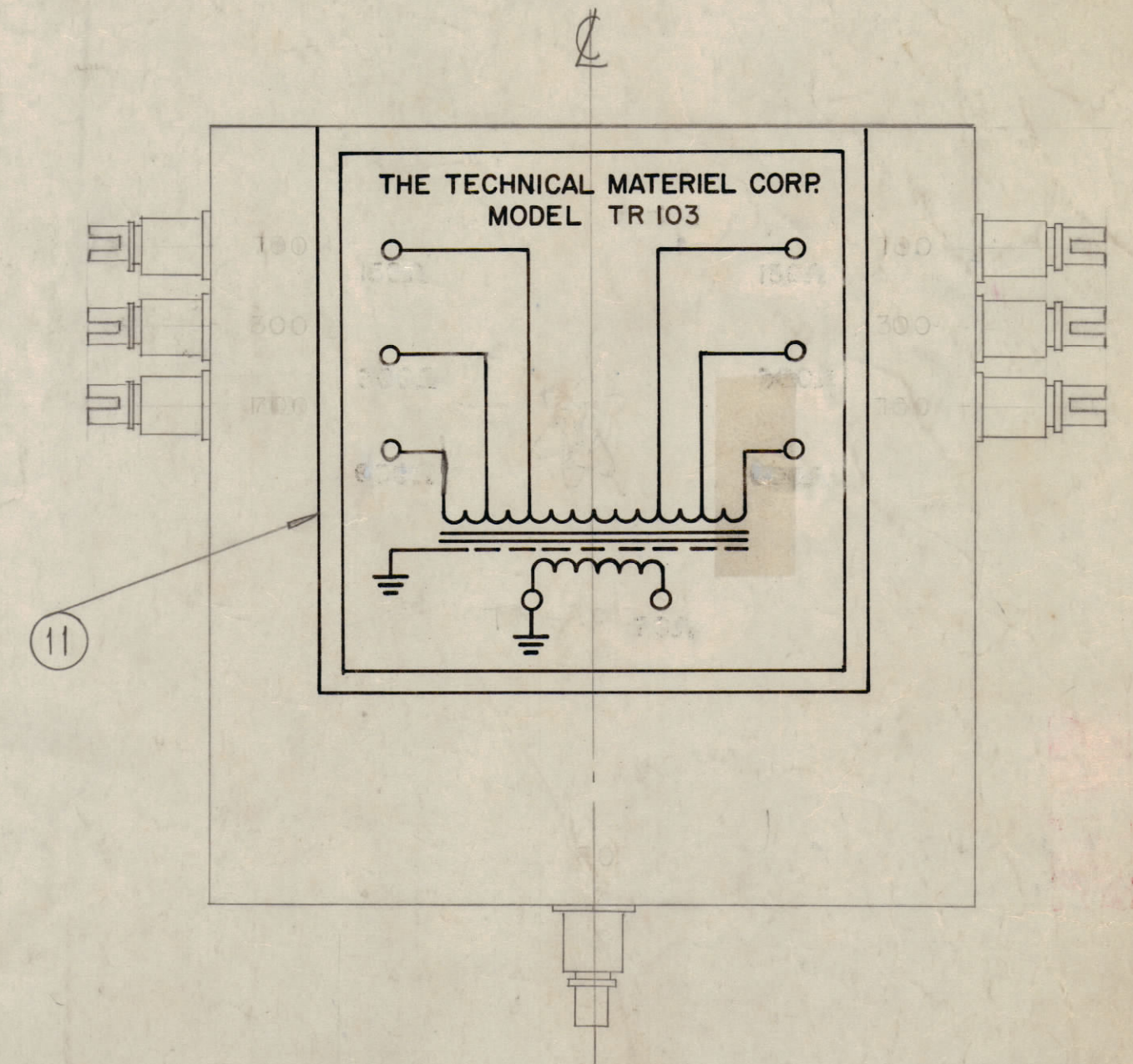
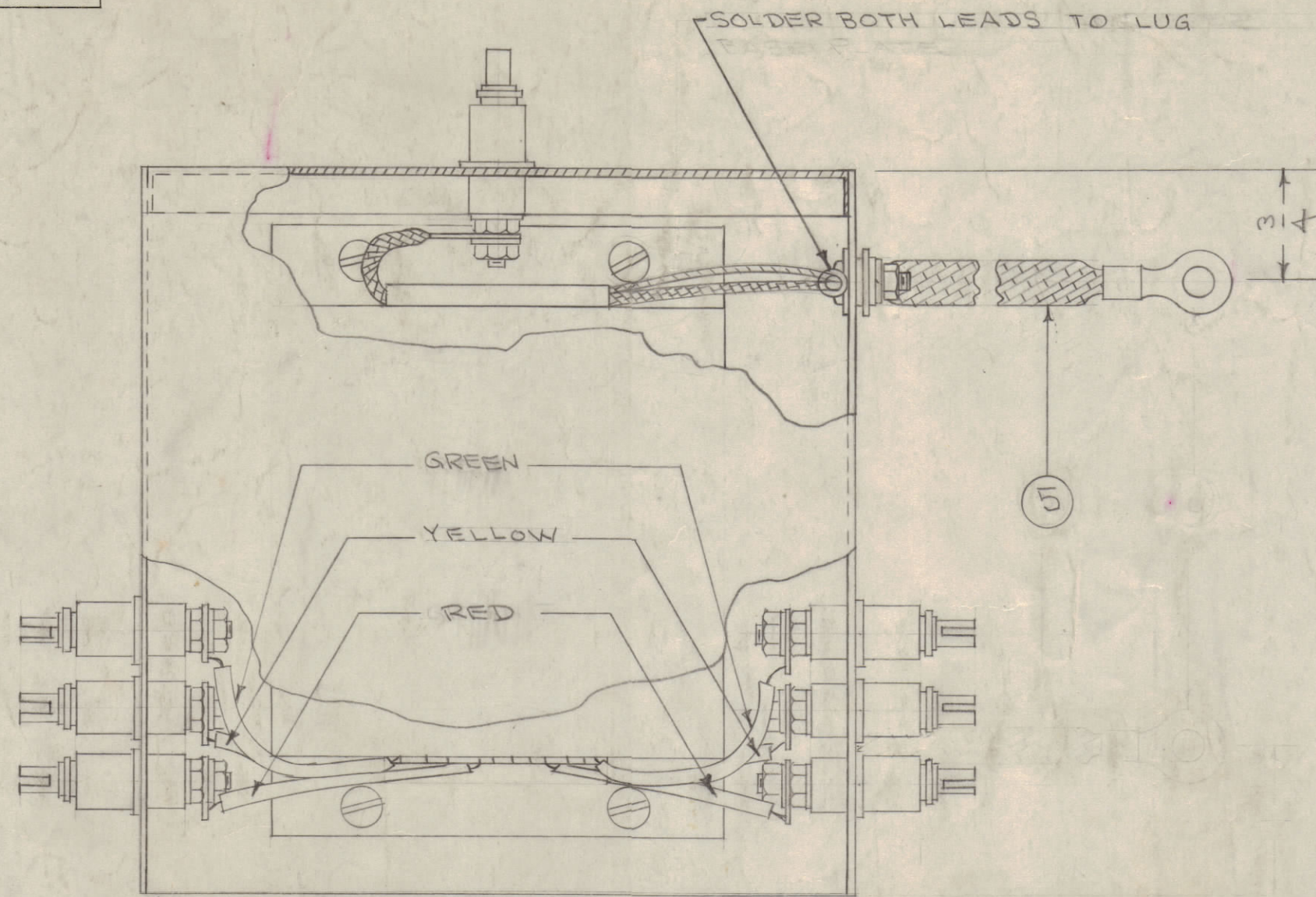


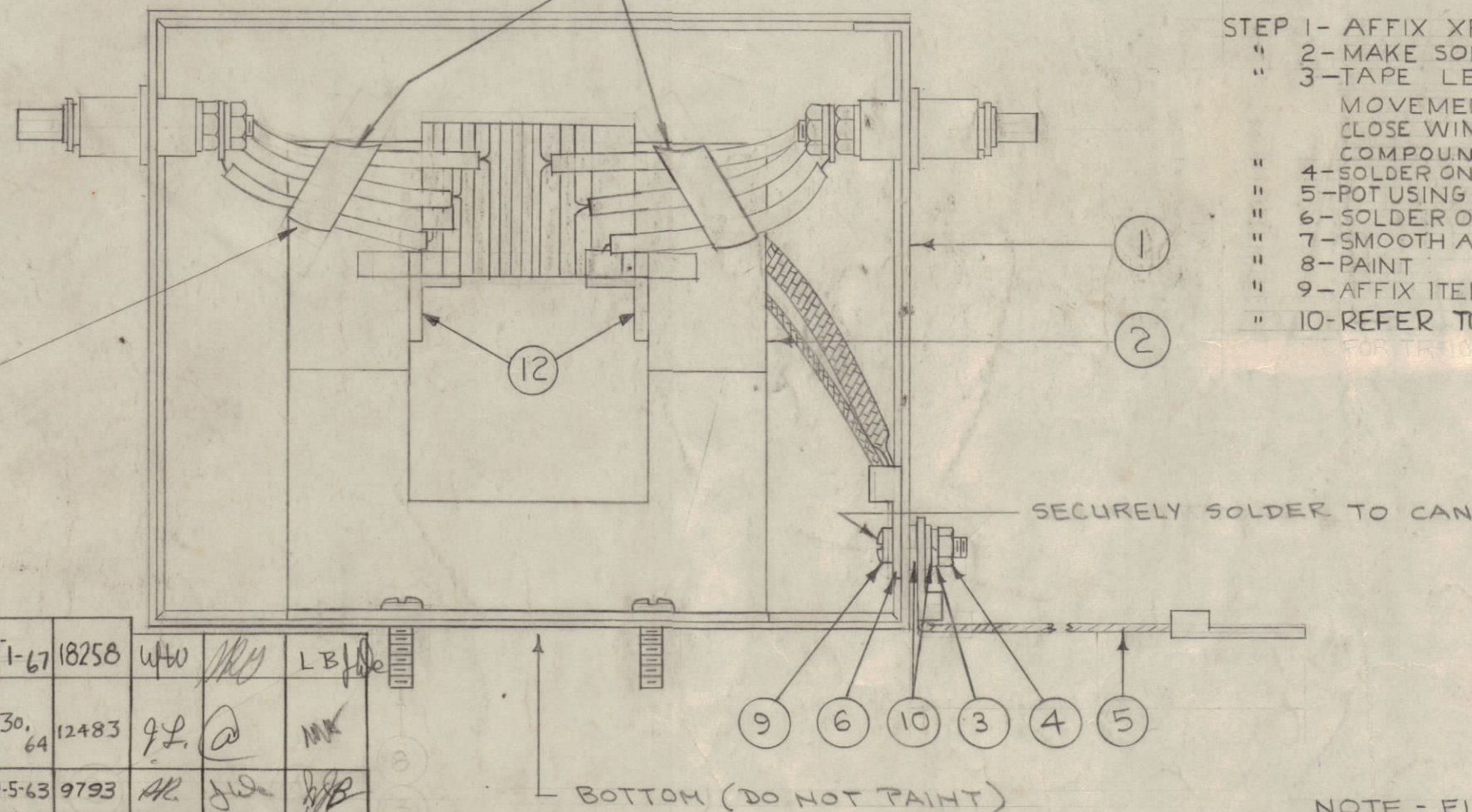
IF IT IS FOUND DESIRABLE TO CHANGE ANY TOLERANCE OR OTHER DETAIL SPECIFIED ON THIS DRAWING NOTIFY THE PURCHASER PROMPTLY.

MAXIMUM ALLOWABLE TOLERANCES HAVE BEEN DETERMINED AND DEVIATIONS WILL BE CAUSE FOR REJECTION. REMOVE ALL BURRS AND SHARP EDGES

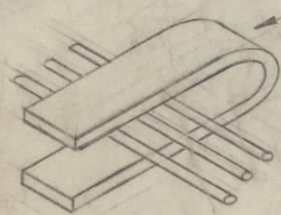
STAMP AS BELOW 1/8" HIGH BLACK GOTHIC



TAPE LEADS AND MAINTAIN POSITIONING AFTER ASSEMBLY (SEE DETAIL)



- STEP 1- AFFIX XFMR TO CAN WITH ITEMS 3 & 4
 " 2- MAKE SOLDER CONNECTIONS AS SHOWN
 " 3- TAPE LEADS TO MINIMIZE MOVEMENT OF LEADS DUE TO POTTING, CLOSE WINDINGS ON INNER CORE TO PREVENT POTTING COMPOUND LEAKING BETWEEN CORE AND WINDING
 " 4- SOLDER ON END SHOWN IN DRAWING
 " 5- POT USING ITEM 8
 " 6- SOLDER ON OTHER END
 " 7- SMOOTH ALL SEAMS
 " 8- PAINT
 " 9- AFFIX ITEM 11 ON TO CASE AS SHOWN.
 " 10- REFER TO TRC-500 TEST PROCEDURE S-286



TAPING DETAIL

NOT TO BE RELEASED W/O AUTHORIZATION
 AUTH. BY:
 DATE:

NOTE - FINISH DEGREASE
 EXCEPT BOTTOM { S-114 ZINC CHROMATE PRIMER
 S-115 SMOOTH GRAY ENAMEL

ITEM NO.	ITEM	USED ON
NP 367	NP 367	TR 103
NP 542	NP 542	TR 102

REQ. ITEM	PART NO.	DESCRIPTION	SYMBOL
X 12	TA 108-9	INSULATION TAPE, ELECTRICAL SIZE 1/2"	
1 11	NP 367	PLATE IDENTIFICATION	
2 10	FW08HBN	WASHER, FLAT	
1 9	SCBP0832BN6	SCREW, MACHINE	
X 8	GL113	COMPOUND, POTTING	
X 7	BS100	SOLDER, TIN ALLOY	
1 6	TE141-2	TERMINAL, LUG	
X 5	CA409-95225	LEAD, ELECTRICAL	
1 4	NTH0832BN10	NUT, PLAIN, HEX	
1 3	LWS08MRN	WASHER, LOCK, SPLIT	
1 2	A1216	TRANSFORMER SUB-ASSY	
1 1	A1217	CASE/COVERS	

THE TECHNICAL MATERIEL CORP.			
MAMARONECK, NEW YORK			
XFMR FINAL ASSY			
STOCK SIZE			
MATERIAL	WEIGHT PER PC.		
TYPE & TEMPER			
DRAWN		ELEC. DES. APP.	
HEAT TREAT. SPEC.		MECH. DES. APP.	
CHECKED		FINAL APPROVAL	
FINISH & SPEC. NO.			
CDD 1/17/56		ARB 28 102	
A.A.D.		A.J.J.	
SEE NOTE		A-1218 G	

ISSUE	ITEM	CHANGED FROM	DATE	CN. NO.	DRAFTS	CHECKER	ENG. APP.
G		TMC PT/NO CHART DELETED IT 11 NP 367 WAS 1 SEE CHART STEP 9 & 10 REVISED	6-1-67	18258	WTO	WTO	LB/De
F		ON B/M. TITLE UPDATED. ON STEP 9. SEE CHART. W/ NP-367 ON STEP 10. FOR TR103... ADD. ON PICT. DELE. TR103, 150Ω, 300Ω, 600Ω, 70Ω. CHART ADDED.	9-30-64	12483	9L	@	MK
E	1	MOD. NOS. SCHM. PICT. PART NOS. IN BUILD-UP & TITLE UPDATED	9-5-63	9793	AK	JIA	WFB
D	1	STEP 10 ADDED	10-20-64	5735	EH	RU	S
C	1	ITEM 12 ADDED, NOTE ADDED	9-19-61	5574	LL	OB	ZB
B	2	ITEM 11 ADDED					
B	1	STAPING ON CASE DELETED	6-1-61	4982	RED	QCB	WFM
A	5	PICTORIALS CHANGED					
A	4	ITEMS 5, 9, 10 ADDED	1/15/56	1	LG	ADD	WJ
A	3	ITEM 5 WAS WL 103-4					
A	2	ITEM 4 WAS QUAN. 4					
A	1	ITEM 3 WAS LW08MRC, QUAN. 4					

TOLERANCES		SCALE:	
ALL DIM. ±	FRAC. DIM. ±	DRILL, PUNCH, COMMERCIAL STOCK	SIZES AND MANUFACTURERS
ANGULAR DIM. ±		TOLERANCES ARE NOT INCLUDED.	

REQ. PER UNIT	MODEL	PROJECT NO.	ASSY. NO.	DATE
1	TR-103			1-17-56
USED ON				