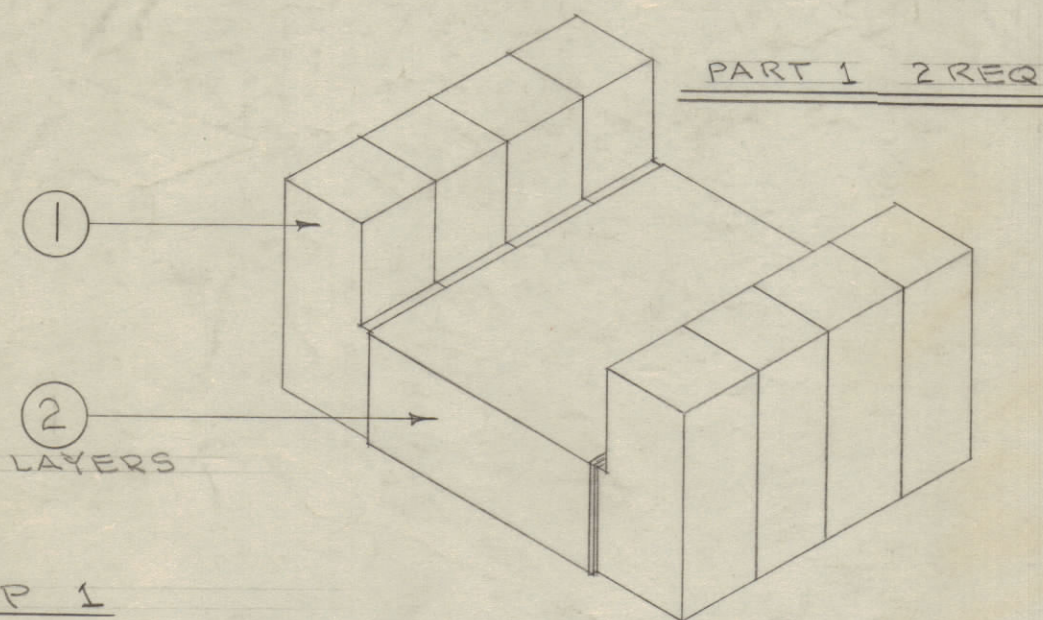
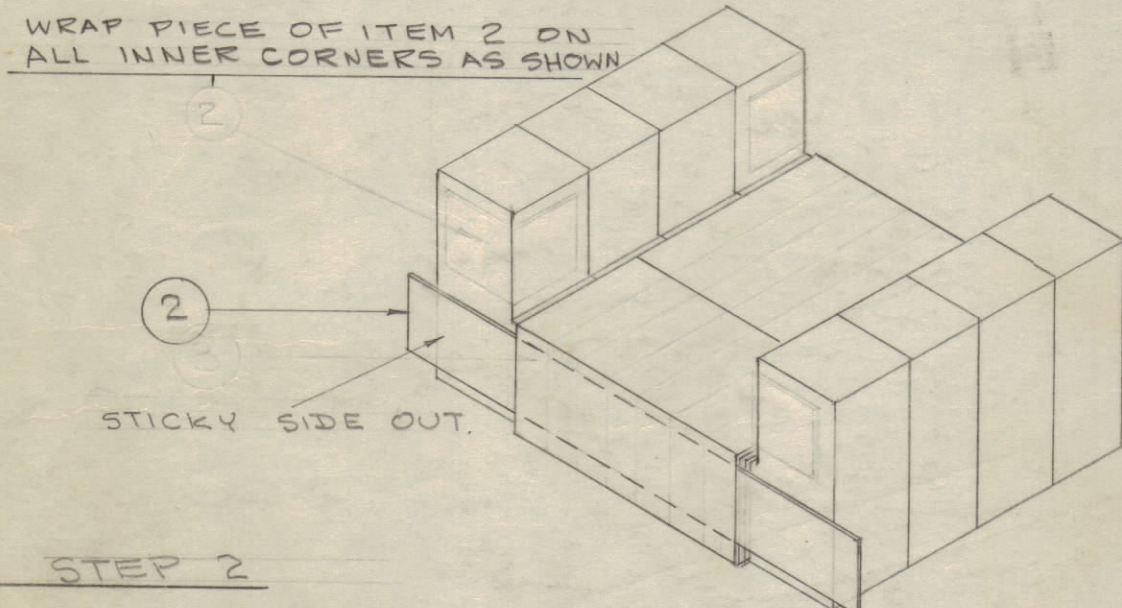


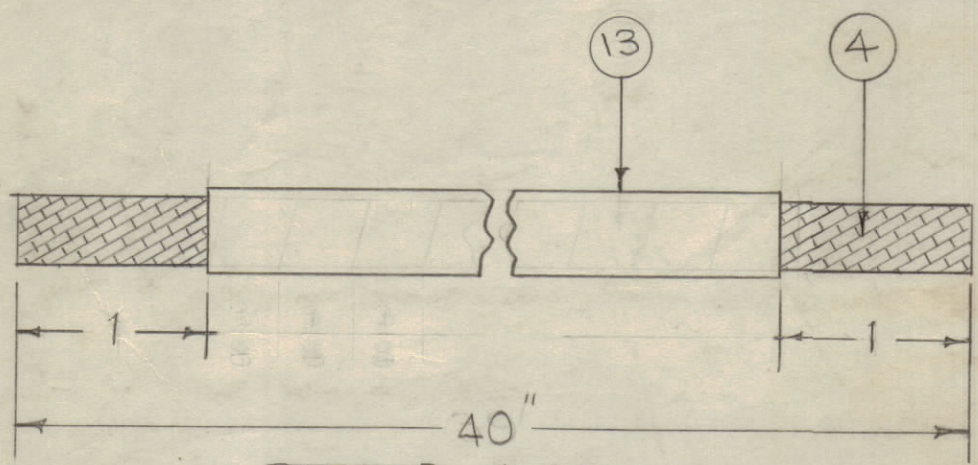
IF IT IS FOUND DESIRABLE TO CHANGE ANY TOLERANCE OR OTHER DETAIL SPECIFIED ON THIS DRAWING NOTIFY THE PURCHASER PROMPTLY.
 MAXIMUM ALLOWABLE TOLERANCES HAVE BEEN DETERMINED AND DEVIATIONS WILL BE CAUSE FOR REJECTION. REMOVE ALL BURRS AND SHARP EDGES



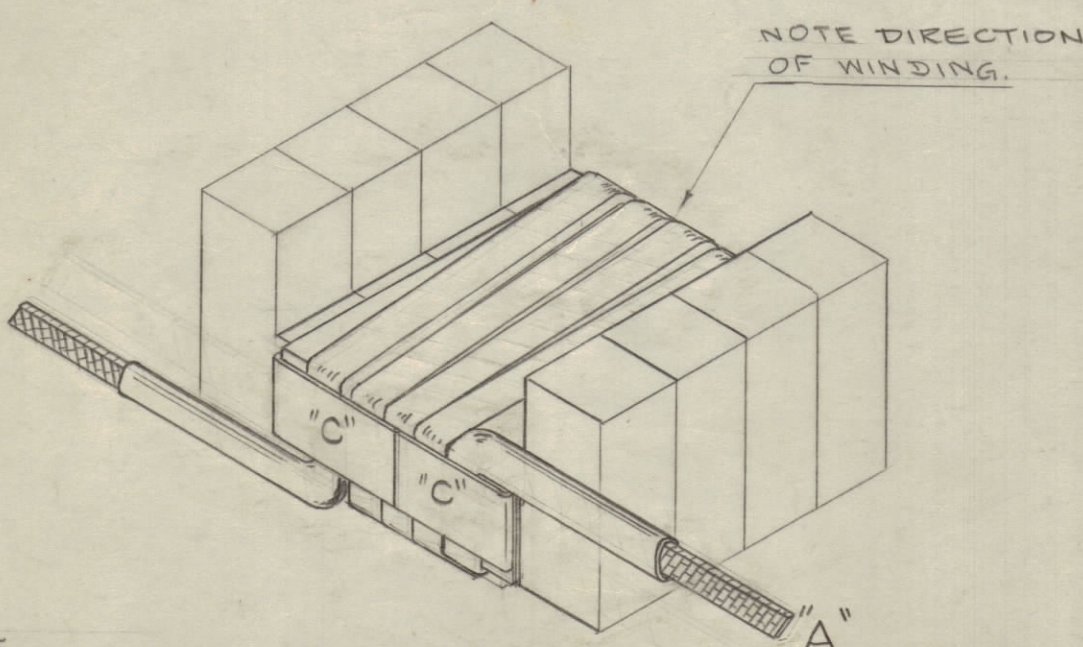
STEP 1
 BIND FOUR PIECES OF ITEM 1 SECURELY TOGETHER WITH 2 LAYERS OF ITEM 2.



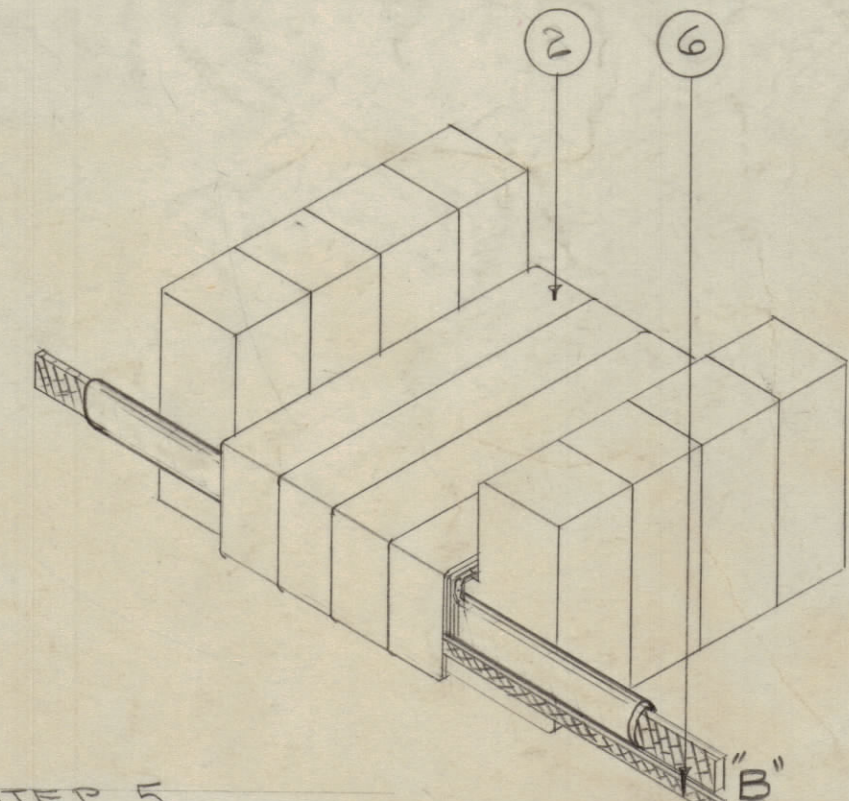
STEP 2
 CUT A 4" STRIP OF ITEM 2 IN HALF (length wise) AND APPLY AS SHOWN.



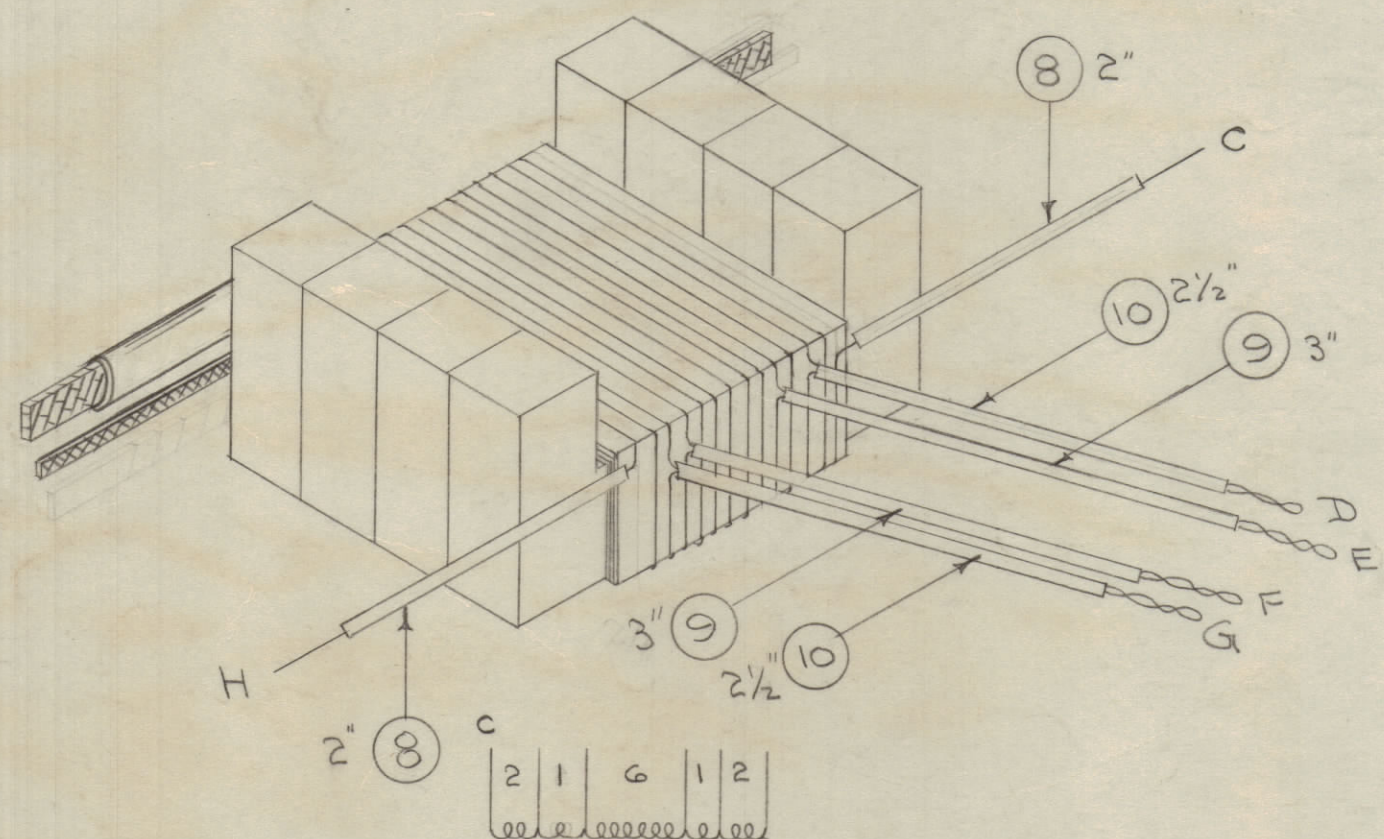
STEP 3
 SLIP ITEM 4 THRU ITEM 13 AS SHOWN.



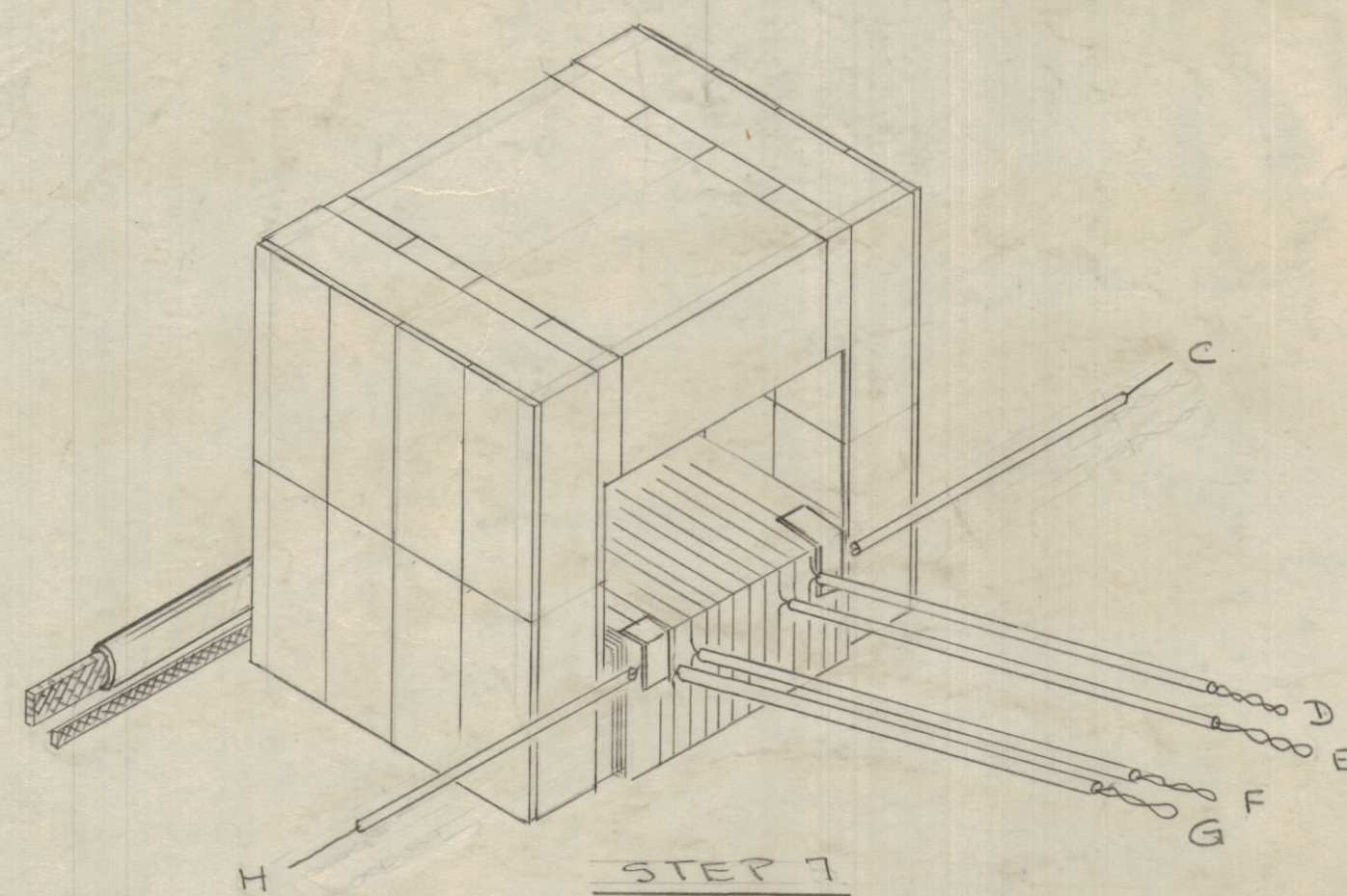
STEP 4
 STARTING AT POINT "A" WIND ON FOUR TURNS COUNTER CLOCKWISE OF PART 2. SECURE ENDS BY WRAPPING TWO ENDS OF ITEM 2 IN STEP 2 AROUND WINDING. ("C") THEN WRAP ENTIRE WINDING WITH 2 LAYERS OF ITEM 2.



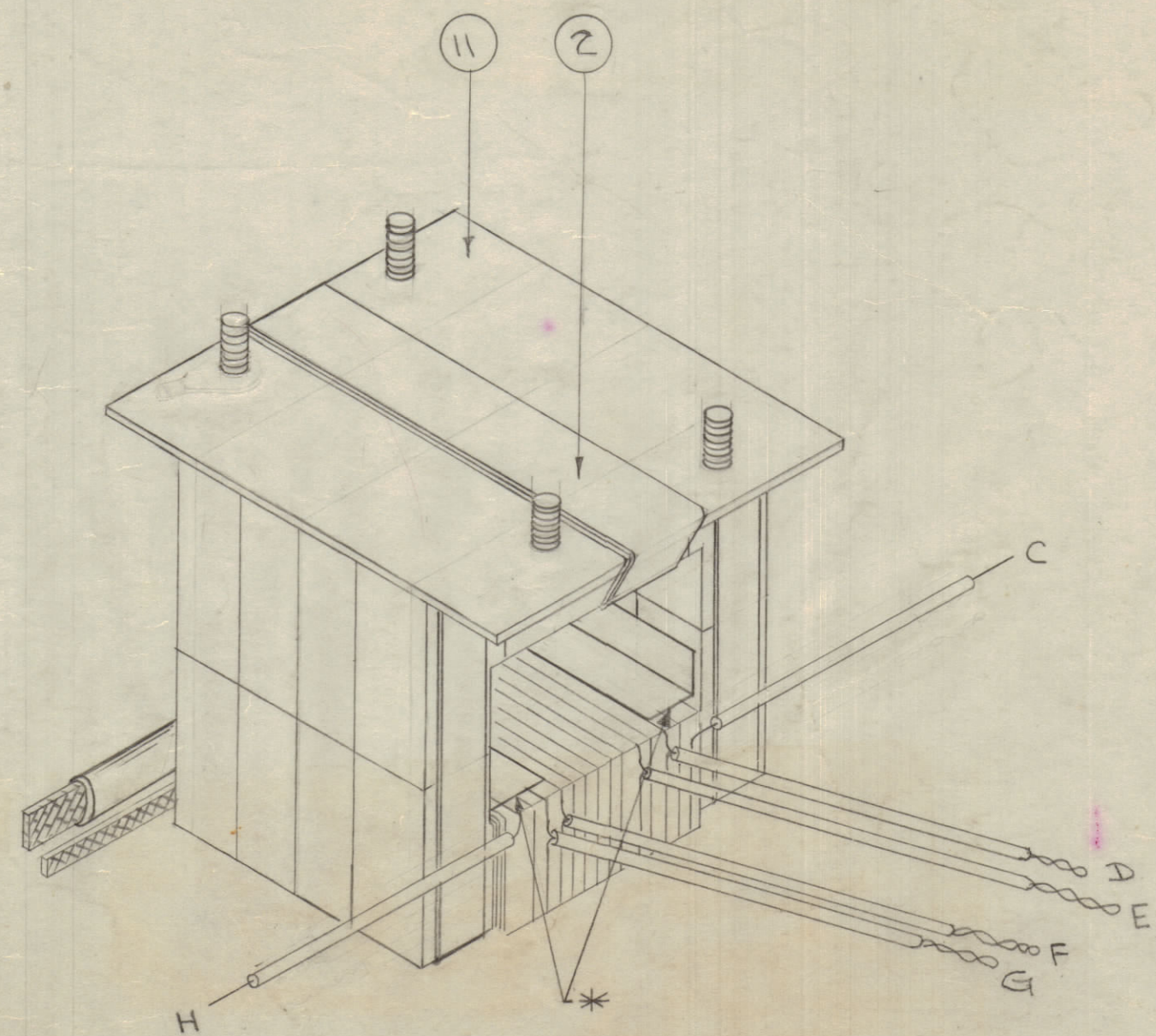
STEP 5
 WITH LEAD IN POSITION SHOWN (POINT B) WIND ON SHIELD (ITEM 6). SECURE ENDS WITH SMALL PIECES OF ITEM 2. COVER SHIELD WITH TWO LAYERS OF ITEM 2. THEN WRAP ENTIRE WINDING WITH ITEM 12 AND SECURE WITH ITEM 2.



STEP 6
 STARTING AT POINT C WIND ON ITEM 7 AS SHOWN ABOVE. SECURE ENDS WITH SMALL PIECES OF TAPE (ITEM 2). SLIP ON SLEEVING AS INDICATED. COAT WINDING WITH ITEM 5 (GL-112). SECURE POINTS "C" & "H" WITH ITEM 2.



STEP 7
 USING ANOTHER PART 1, FASTEN IT SECURELY TO WOUND CORE WITH AT LEAST TWO LAYERS OF ITEM 2. NOTE THAT MATING SURFACES MUST BE CLEAN AND SMOOTH. BAKE DRY AT 240°F FOR 1/2 HOUR.



STEP 8
 FASTEN BASE PLATE SECURELY TO TRANSFORMER WITH ITEM 2.

* CLOSE OPENING TO PREVENT POTTING COMPOUND FROM LEAKING BETWEEN CORE AND WINDING MATERIAL

NOTICE TO PERSONS RECEIVING THIS DRAWING
 THE TECHNICAL MATERIEL CORPORATION claims proprietary right in the material disclosed hereon. This drawing is issued in confidence for engineering information only and may not be reproduced or used to manufacture anything shown hereon without permission from THE TECHNICAL MATERIEL CORPORATION to the user. This drawing is loaned for mutual assistance and is subject to recall at any time.
 Property of:
 THE TECHNICAL MATERIEL CORPORATION
 MAMARONECK, NEW YORK

NOT TO BE RELEASED W/O AUTHORIZATION
 AUTH. BY: _____
 DATE: _____

THE TECHNICAL MATERIEL CORPORATION
 NOTICE TO PURCHASER REGARDING THIS DRAWING
OBSOLETE
 DIRECTLY REPLACED BY A4577

REQ. ITEM	PART NO.	DESCRIPTION	SYMBOL
40	13 PX 370-6-7	INSULATION, SLEEVING, TEF, SIZE 6	Natural
1	12 IM 163-12	INSULATION, CLOTH, ELECTRICAL	
1	11 A1215	PLATE ASSY, BASE	
5	10 PX 10A-2-133	INSULATION, SLEEVING, SIZE 8	YEL.
6	9 PX 10A-3-133	INSULATION, SLEEVING, SIZE 8	RED
4	8 PX 10A-4-133	INSULATION, SLEEVING, SIZE 8	GRN.
X	7 WI 125-1	WIRE, EL, MAG, HCER, SIZE 16	
1	6 A1213	SHIELD ASSY.	
X	5 GL 112	INSULATING VARNISH, ELECTRICAL	
40	4 WL 103-4	BRAD, WIRE, FLAT, SIZE 1/4	
-	3	DELETED	
X	2 TA 108-9	INSULATION TAPE, ELEC. SIZE 1 1/2	
8	1 CI 101-30	CORE, U	

STOCK SIZE		DESCRIPTION		SYMBOL
MATERIAL		THE TECHNICAL MATERIEL CORP. MAMARONECK, NEW YORK		
WEIGHT PER PC.		TRANSFORMER SUB-ASSY		
TYPE & TEMPER.		CDD 4/11/56		
DRAWN		ELEC. DES. APP.		
HEAT TREAT. SPEC.		MECH. DES. APP.		
CHECKED		FINAL APPROVAL		
FINISH & SPEC. NO.		A-1216 E		

REQ. PER UNIT	MODEL	PROJECT NO.	ASSY. NO.	DATE
1	TR-162	437	A1218-2	1-17-56
1	TR-103		A-1218-1	

ISSUE	ITEM	CHANGED FROM	DATE	CN. NO.	DRAFTS	CHECKER	ENG. APP.
E		ON S/M, TITLE, USED ON, UPDATED	9-30-44	12483	22		
D	1	MODEL NO. TR-103 WAS TRC-500, TR-162 ADDED	9-3-43	9881			
C	1	POTTING NOTE ADDED	9-15-61	5574	55		
B	1	COMPLETE REVISION	9-15-57	2	16		
A	1	CORE WAS CE-103-3-9		1			

FORM - 111