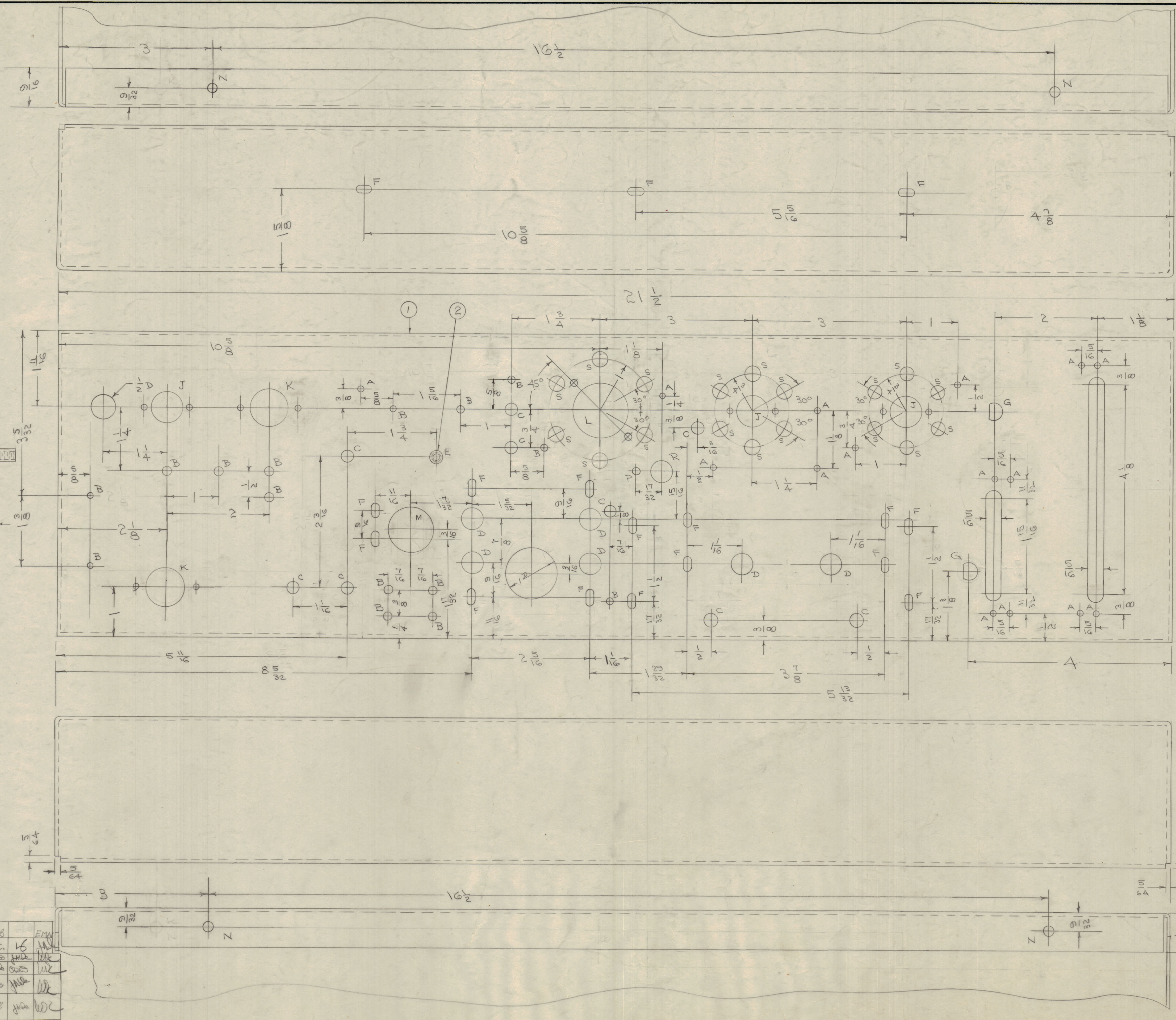
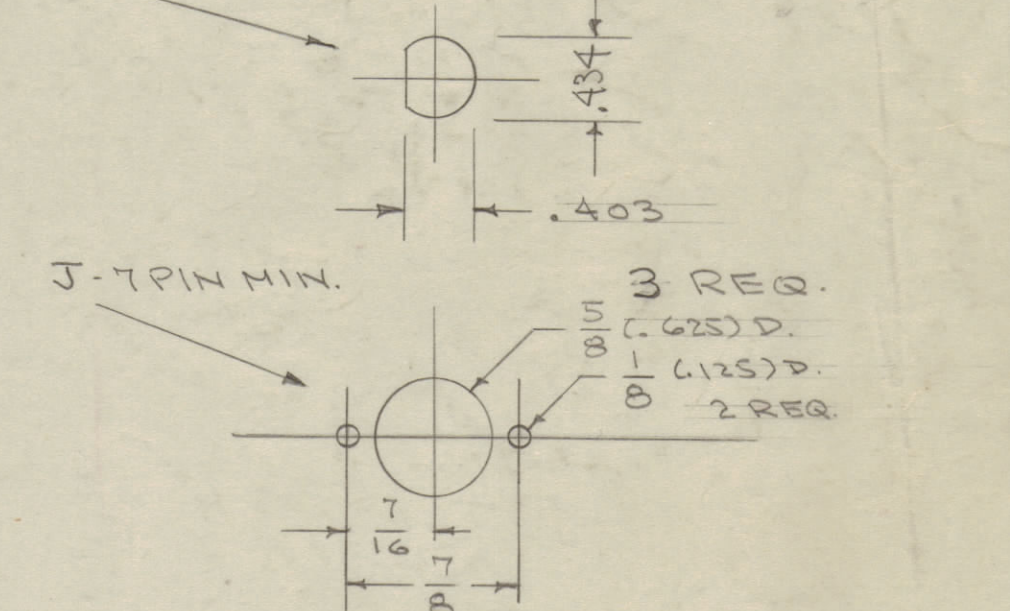


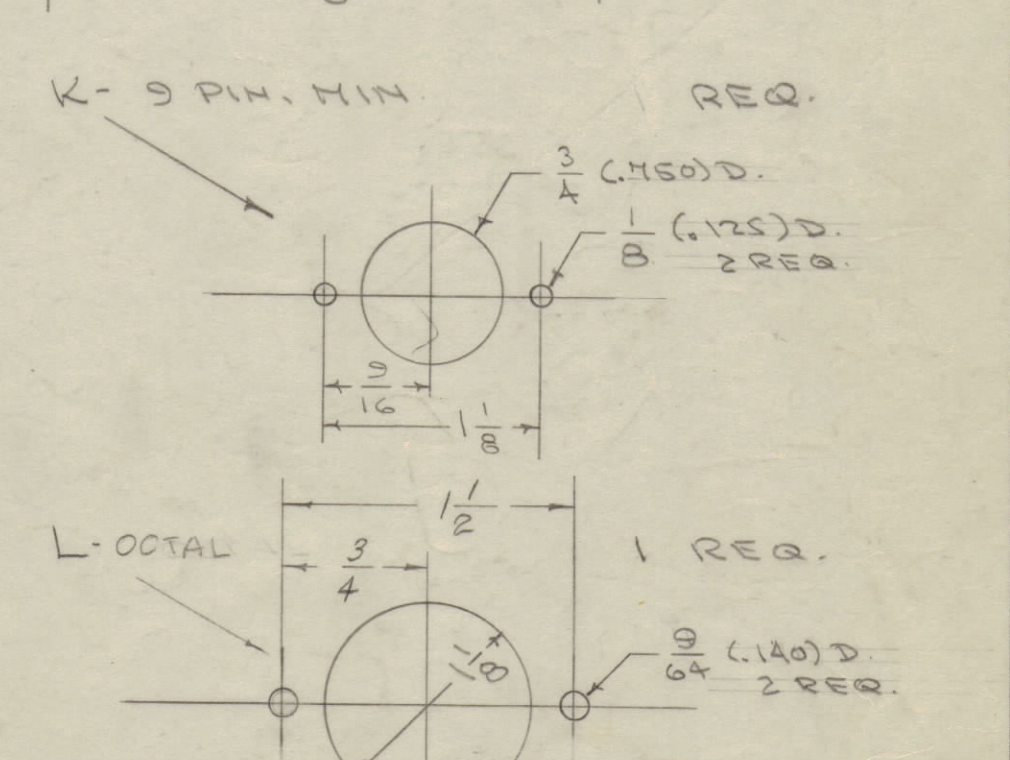
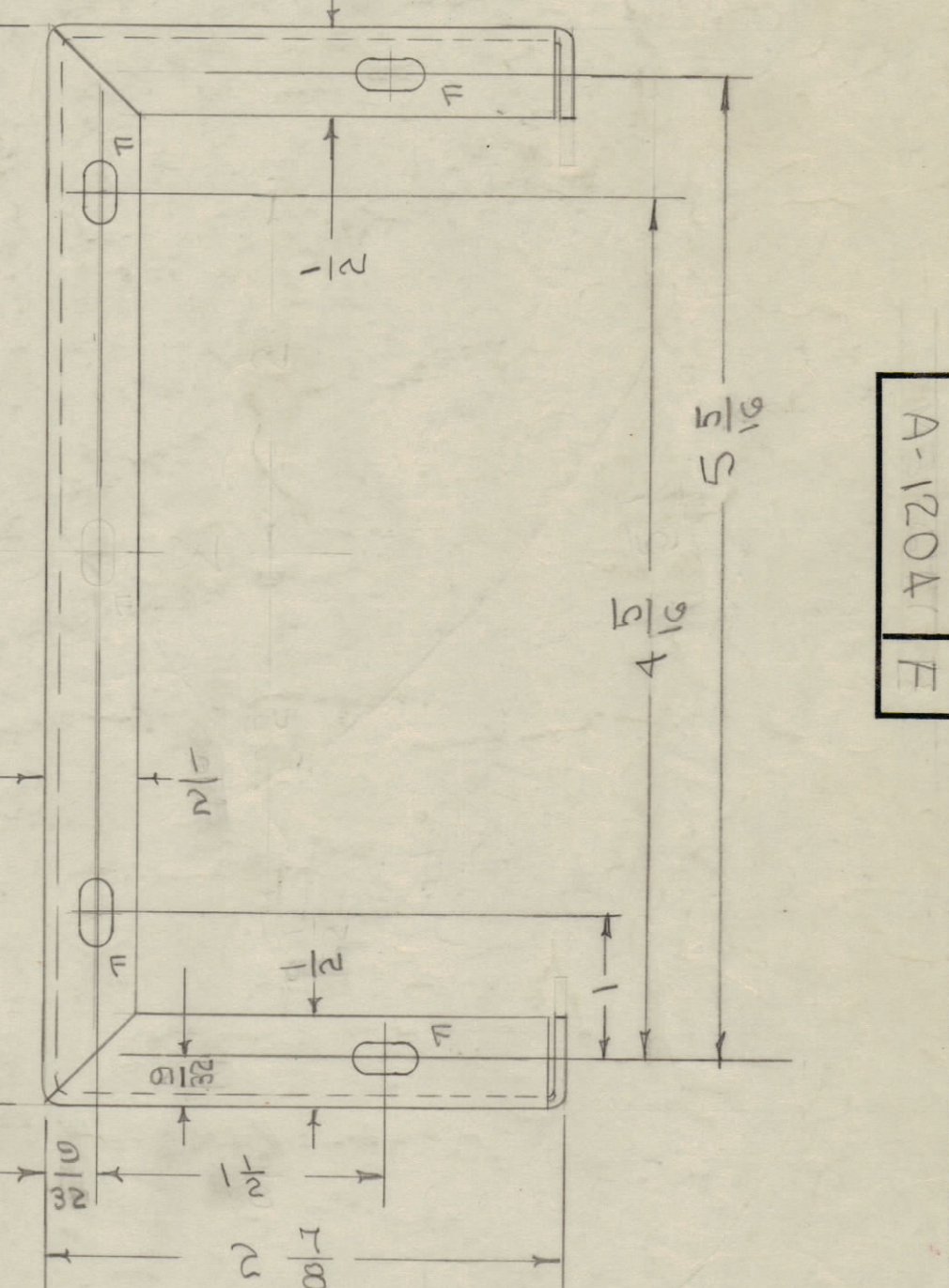
IF IT IS FOUND DESIRABLE TO CHANGE ANY TOLERANCE OR OTHER DETAIL SPECIFIED ON THIS DRAWING NOTIFY THE PURCHASER PROMPTLY.
 MAXIMUM ALLOWABLE TOLERANCES HAVE BEEN DETERMINED AND DEVIATIONS WILL BE CAUSE FOR REJECTION. REMOVE ALL BURRS AND SHARP EDGES



- S - 5/16 (.312) DIA. 18 HOLES REQ.
- M - 7/8 (.875) DIA. 1 HOLE REQ.
- A - 1/8 (.125) DIA. 15 HOLES REQ.
- B - 1/64 (.0156) " 15 " "
- C - 1/4 (.250) " 10 " "
- D - 1/2 (.500) " 7 " "
- E - 1/2 (.500) D. 7 " "
- F - 5/32 x 5/16 " 21 " "
- G - " 2 REQ.



- N - 13/64 (.203) D - 4 HOLES
- P - 3/64 (.140) D - 1 " "
- R - 13/32 (.406) D - 1 " "



NOTICE TO PERSONS RECEIVING THIS DRAWING
 THE TECHNICAL MATERIEL CORPORATION claims proprietary right in the material disclosed herein. This drawing is issued in confidence for engineering information only and may not be reproduced or used to manufacture anything shown hereon without permission from THE TECHNICAL MATERIEL CORPORATION to the user. This drawing is loaned for mutual assistance and is subject to recall at any time.
 Property of:
 THE TECHNICAL MATERIEL CORPORATION
 MAMARONECK, NEW YORK

ISSUE	ITEM	CHANGED FROM	DATE	CN. NO.	DRAFTS	CHECKER	ENG. APP.
F	1	S-404 IRIDITE WAS S-101 CAUSTIC DIP	12/1/53	100	A.B.		EMM
F	2	TYPE HOLES WORKS					
D	1	16 'A' HOLES WERE 12	3/8/57	5	EC	16	JAN
E	1	16 'A' HOLES WERE 17	5/11/57	4	EDS		JAN
C	2	ONE 'B' HOLE ADDED	5/18/56	3	JAN		JAN
C	1	TWO 'B' HOLES MOVED					
B	3	PUNCH DETAIL CHANGED	4/18/56	2	EDS		JAN
B	2	1 'E' HOLE ADDED					
B	1	'D' HOLES WERE 1/16					
A	3	3 3/32 WAS 3/16	1-27-50	1	B		JAN
A	2	1 1/32 WAS 1/16					
A	1	M HOLE WAS 5/8					

ISSUE	ITEM	CHANGED FROM	DATE	CN. NO.	DRAFT	CHEK.	APP.
E	1	'S' HOLES ADDED	2/24/56	5	EDS		JAN

REQ. PER UNIT	MODEL	PROJECT NO.	ASSY. NO.	DATE
1	RTF	271		8-22-55

REQ. ITEM	PART NO.	DESCRIPTION	SYMBOL
1	2 TE-108-11	STANDOFF, RIVET TYPE	
1	1 MS-677	CHASSIS MULTIPLIER (NO. DWG.)	

STOCK SIZE	WEIGHT PER PC.
ALUMINUM #	GPT-750
5052-H32	

TYPE & TEMPER	DRAWN	ELEC. DES. APP.	MECH. DES. APP.
H	JAN		

HEAT TREAT. SPEC.	CHECKED	FINAL APPROVAL
S-404 IRIDITE		A.T.J.

FINISH & SPEC. NO.
A-1204 F