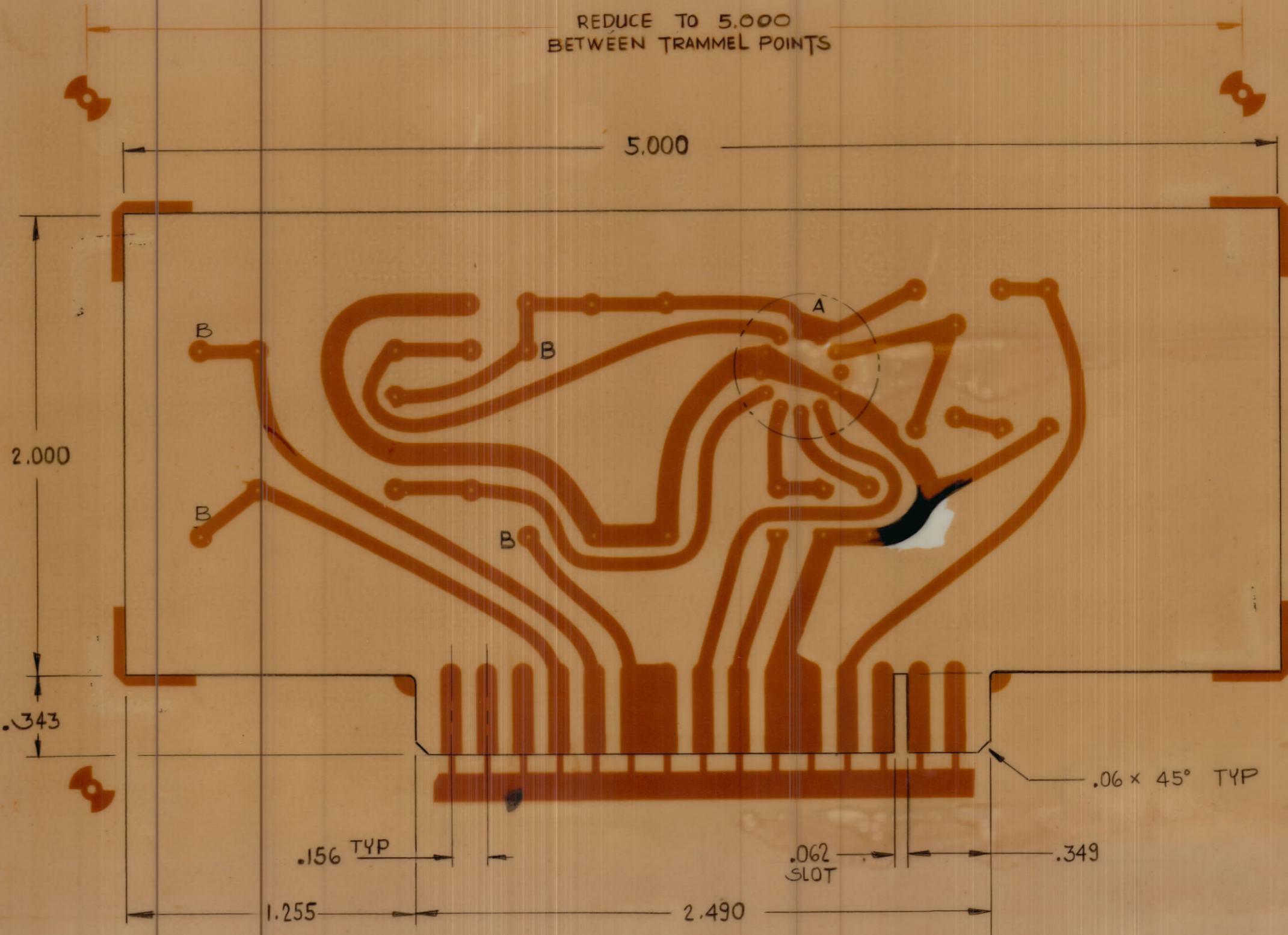


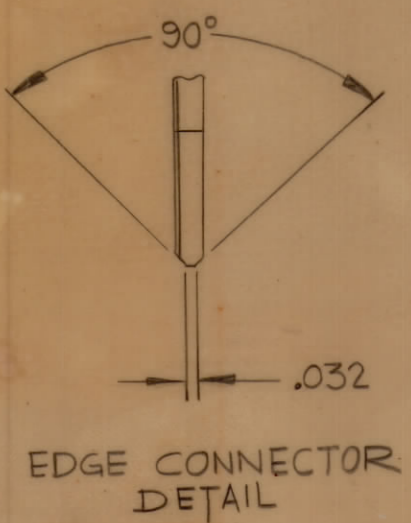
| IF IT IS FOUND DESIRABLE TO CHANGE ANY TOLERANCE OR OTHER DETAIL SPECIFIED ON THIS DRAWING NOTIFY THE PURCHASER PROMPTLY | | DIMENSIONS IN INCHES UNLESS OTHERWISE SPECIFIED | | | | | |
|--|------|---|-----------|--------|--------|---------|-----------|
| MAXIMUM ALLOWABLE TOLERANCES HAVE BEEN DETERMINED AND DEVIATIONS WILL BE CAUSE FOR REJECTION. REMOVE ALL BURRS AND SHARP EDGES | | | | | | | |
| ISSUE | ITEM | CHANGED FROM | DATE | CN NO. | DRAFTS | CHECKER | ENG. APP. |
| Ø | | REL TO PROD | 8 FEB 73 | | pm | SDW | SDW |
| A | | REV PER CEMN | 23 FEB 73 | 1221 | pm | SDW | SDW |
| B | | REV PER CEMN | 13 MAR 73 | 1232 | pm | SDW | SDW |



A11088-1 B

| REF | DESCRIPTION | QTY |
|----------|-------------|-----|
| A | .030 DIA | 12 |
| B | .052 DIA | 4 |
| UNMARKED | .042 DIA | ~ |

- NOTES: ~
1. MATERIAL - PLASTIC SHEET LAMINATE
COPPER CLAD FL-GE-062-C-2/0.
 2. FINISH - CONDUCTIVE PATTERN TO BE PLATED
WITH A MINIMUM OF .0003 THK TIN/LEAD
 3. THIS BOARD MUST MEET THE REQUIREMENTS
OF TMC SPEC -735.



| | | |
|--------------|--------|--------------------------------|
| TOLERANCES | | SCALE 2:1 |
| ALL DIM. | ± .05 | DRILL, PUNCH, COMMERCIAL STOCK |
| FRAC DIM. | ± .01 | SIZES AND MANUFACTURERS |
| ANGULAR DIM. | ± .005 | TOLERANCES ARE NOT INCLUDED |

| | | | |
|---------|-------------|-----------|----------|
| RCSR-IT | 141/72 | A11088-5 | 8 FEB 73 |
| MODEL | PROJECT NO. | ASSY. NO. | DATE |

| | | | |
|--------------------|--|--|-----------|
| STOCK SIZE | | TMC (Canada) LIMITED OTTAWA ONTARIO | |
| SEE NOTE 1 | | P.C. BOARD MACHINING | |
| MATERIAL | | AUDIO AMPLIFIER | |
| TYPE & TEMPER | | DRAWN | S. WITTEN |
| HEAT TREAT SPEC. | | CHECKED | S. WITTEN |
| SEE NOTE 2 | | FINAL APPROVAL | |
| FINISH & SPEC. NO. | | SHEET 2 OF 4 A11088-2 B | |