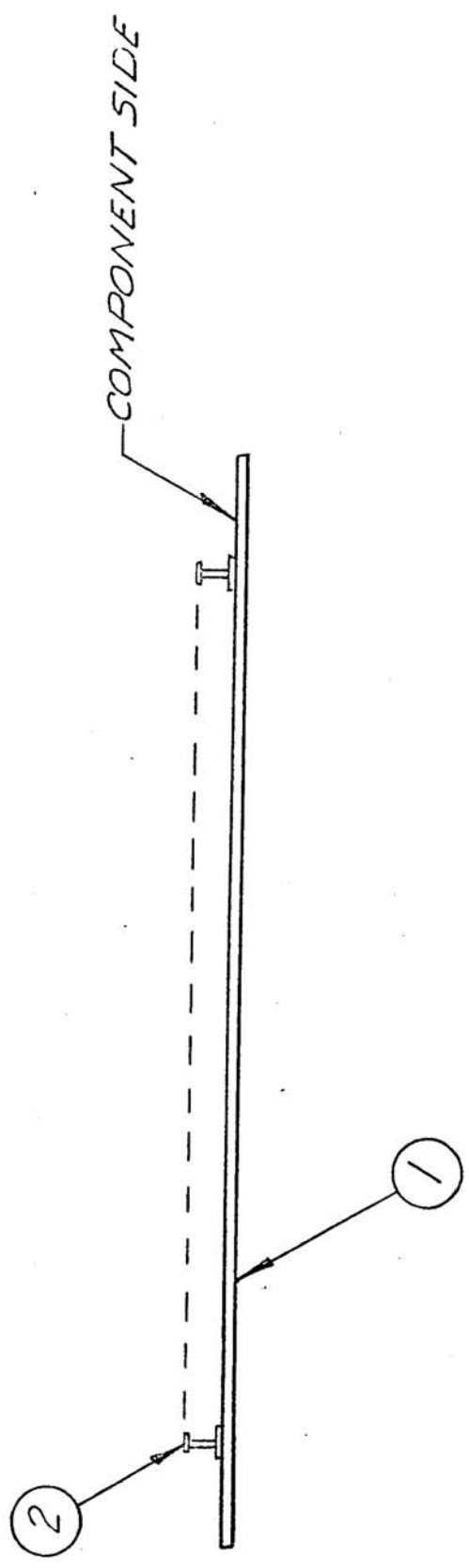


ISSUE	ITEM	CHANGED FROM	DATE	CN. NO.	DRAFTS	CHECKER	ENG. APP.	REQ.	ITEM	PART NO.	DESCRIPTION	SYMBOL
X		ENG. RELEASE			JVR	4B	W.A.T.	1	1	A11045-3	PC. BD.	
X ₁		SEE SHEET 5	24 DEC 72		J.L.			12	2	TE127-2	STUD, TERMINAL	



NOTE: FOR TERMINAL STUD POSITIONS SEE DWG A11045-5.

LRA 400		PROJECT NO.	A11045-5	DATE	JUNE 5-72
MODEL		ASS'Y. NO.			
USED ON					
MAXIMUM ALLOWABLE TOLERANCES HAVE BEEN DETERMINED AND DEVIATIONS WILL BE CAUSE FOR REJECTION. REMOVE ALL BURRS AND SHARP EDGES		IF IT IS FOUND DESIRABLE TO CHANGE ANY TOLERANCE OR OTHER DETAIL SPECIFIED ON THIS DRAWING NOTIFY THE PURCHASER PROMPTLY.			
TOLERANCES		SCALE ~			
DEC. DIM. ±	.X ± .06	DIMENSIONS IN INCHES UNLESS OTHERWISE SPECIFIED			
FRAC. DIM. ±	1/64 .XX ± .01	DRILL: PUNCH, COMMERCIAL STOCK SIZES AND MANUFACTURERS TOLERANCES ARE NOT INCLUDED.			
ANGULAR DIM. ±	0° 30' .XXX ± .005				
ALL OTHERS					
STOCK SIZE		TMC (Canada) LIMITED OTTAWA ONTARIO			
MATERIAL		5W. WIDE BAND AMPLIFIER, PCB			
WEIGHT PER PC.		- SLUB, ASSY -			
TYPE & TEMPER		DRAWN		ELEC. DES. APP.	
HEAT TREAT. SPEC.		V. VANRHEE		W.A. Taylor	
FINISH & SPEC. NO.		L. BROWN		MECH. DES. APP.	
		CHECKED		FINAL APPROVAL	
		SHT 4 of 5		A11045-4 X ₁	