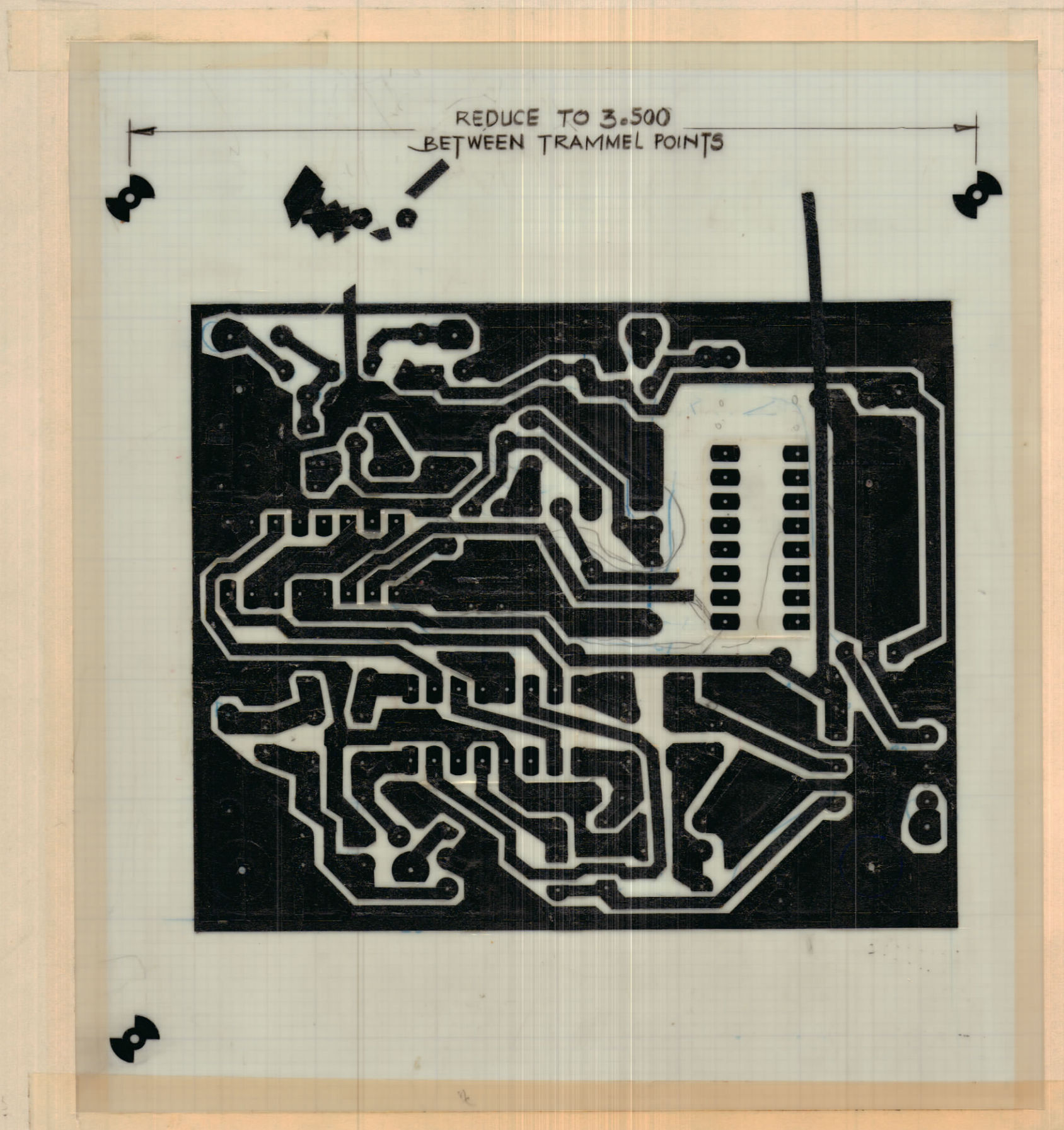


IF IT IS FOUND DESIRABLE TO CHANGE ANY TOLERANCE OR OTHER DETAIL SPECIFIED ON THIS DRAWING NOTIFY THE PURCHASER PROMPTLY.		DIMENSIONS IN INCHES UNLESS OTHERWISE SPECIFIED					
MAXIMUM ALLOWABLE TOLERANCES HAVE BEEN DETERMINED AND DEVIATIONS WILL BE CAUSE FOR REJECTION. REMOVE ALL BURRS AND SHARP EDGES.							
ISSUE	ITEM	CHANGED FROM	DATE	CN. NO.	DRAFTS	CHECKER	ENG. APP.
X		ENG. RELEASE	16 AUG 73		PMM		

REQ.	ITEM	PART NO.	DESCRIPTION	SYMBOL
------	------	----------	-------------	--------



A11041-1 X

TOLERANCES		SCALE: 2:1
ALL OTHERS	DEC. DIM. ± .X = .05 FRAC. DIM. ± 1/64 .XX = .01 ANGULAR DIM. ± 0° 30' .XXX = .005	DRILL, PUNCH, COMMERCIAL STOCK SIZES AND MANUFACTURERS TOLERANCES ARE NOT INCLUDED.

MMX() 3	110/71	A11041-5	16 AUG 73
MODEL	PROJECT NO.	ASSY. NO.	DATE

STOCK SIZE		TMC (Canada) LIMITED OTTAWA ONTARIO	
MATERIAL		P.C. BOARD ETCHING MINOR LOOP V.C.O.	
TYPE & TEMPER		PMM	
HEAT TREAT. SPEC.		DRAWN	ELEC. DES. APP. MECH. DES. APP.
FINISH & SPEC. NO.		CHECKED	FINAL APPROVAL
		SHEET 1 OF 5 A11041-1 X	

ASSEMBLY NOTES

1. TO MOUNT COMPONENTS INSERT LEADS THROUGH HOLES.
2. CAUTION, WHEN APPLYING HEAT & SOLDER TO LEAD & FOIL.
3. CLEAN & INSPECT AS PER SPEC S676.
4. FOR ELECTRICAL COMPONENT PART NUMBERS REFER TO NPL A
5. USE SYMBOL NUMBERS FOR ASSY. REF.

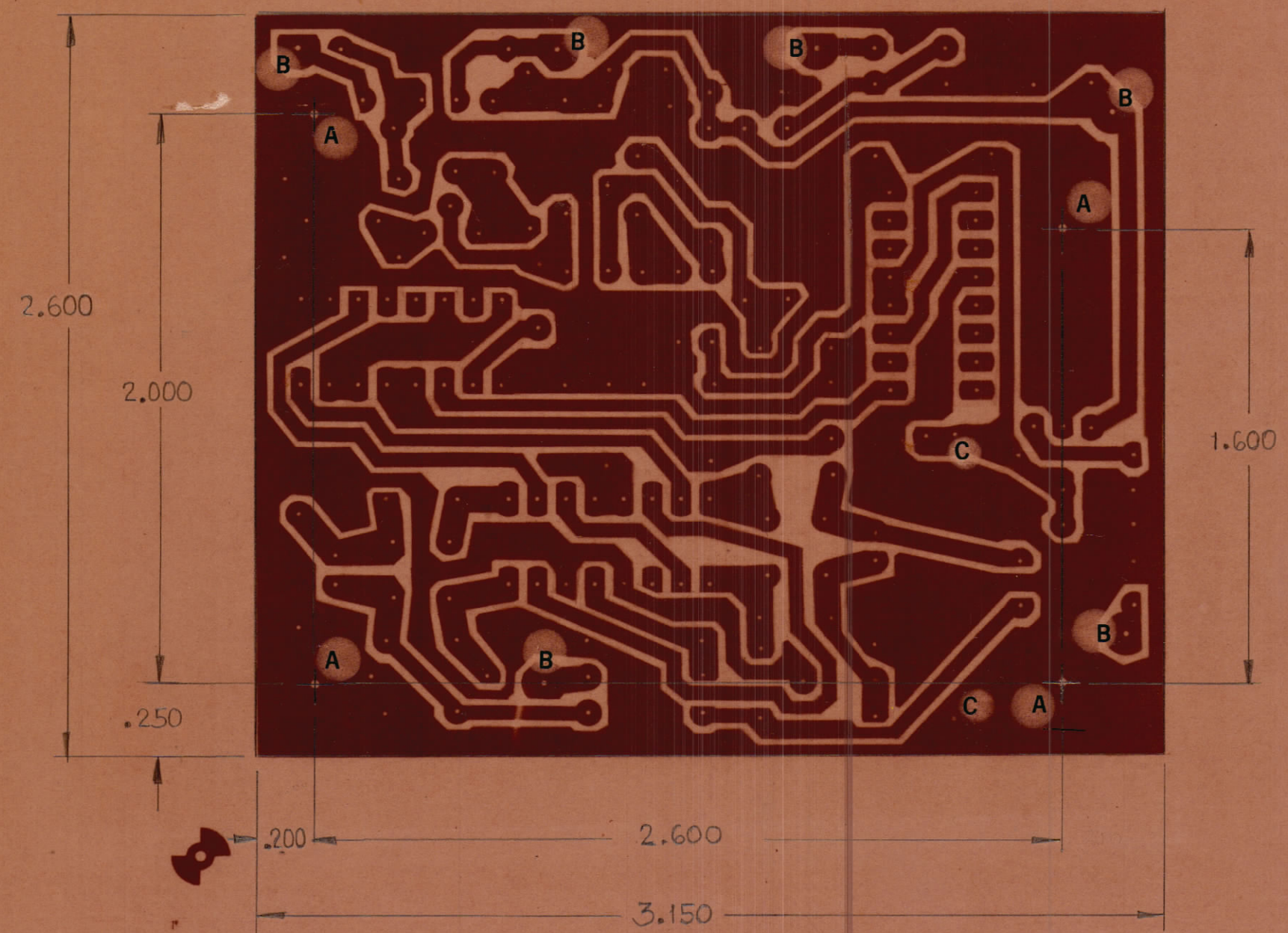
IF IT IS FOUND DESIRABLE TO CHANGE ANY TOLERANCES OR OTHER DETAIL SPECIFIED ON THIS DRAWING NOTIFY THE PURCHASER PROMPTLY.

MAXIMUM ALLOWABLE TOLERANCES HAVE BEEN DETERMINED AND WILL BE CAUSE FOR REJECTION REMOVE ALL BURRS AND SHARP EDGES.

ISSUE	ITEM	CHANGED FROM
A		COMPLY REDESIGN

REDUCE TO 3.500 BETWEEN TRAMMEL POINTS

HOLE	DESCRIPTION	QTY
A	.140	4
B	.081	6
C	.052	2
UNMARKED	.040	~



NOTES: ~

1. MATERIAL - PLASTIC SHEET LAMINATE COPPER CLAD FL-GE-062-C-2/0.
2. FINISH --- CONDUCTIVE PATTERN TO BE PLATED WITH A MINIMUM OF .0003 THICK TIN/LEAD
3. THIS BOARD MUST MEET THE REQUIREMENTS OF TMC SPEC. S735.

A11041-2 A

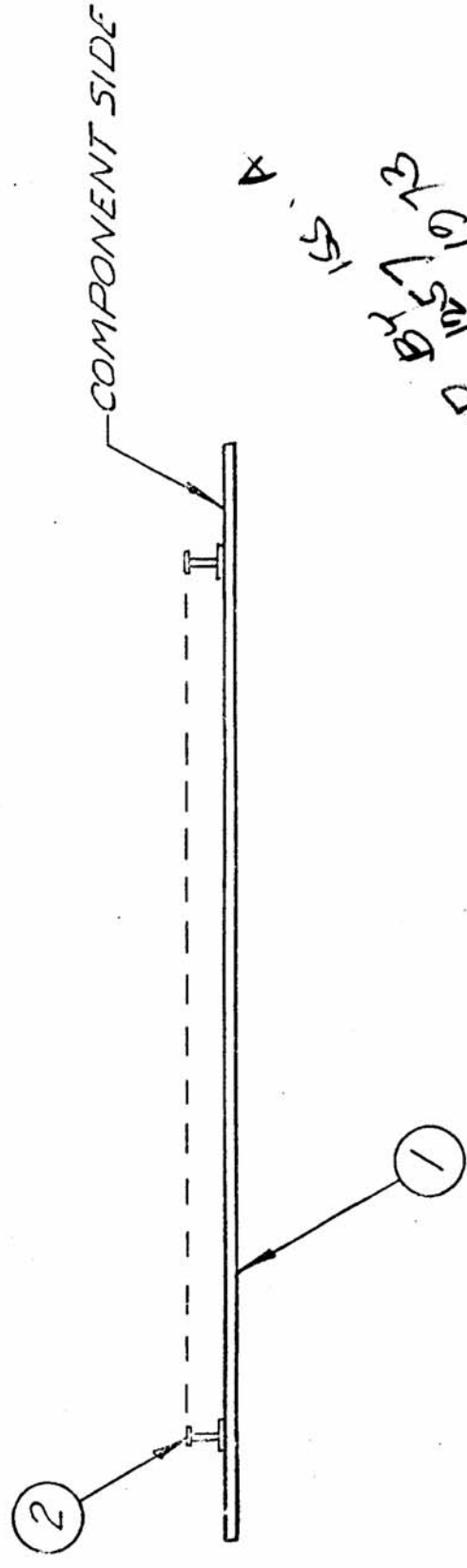
TOLERANCES		SCALE
DEC DIM	X.05	2:1
FRACTIONAL DIM	XX.01	
ANGULAR DIM	XXX.005	

DRILL, PUNCH, COMMERCIAL STOCK SIZES AND MANUFACTURERS TOLERANCES ARE NOT INCLUDED

MMX-3	110/71	A11041-5	12 Sept 73
MODEL	PROJECT NO	ASSY NO	DATE

STOCK SIZE		TMC (Canada) LIMITED OTTAWA ONTARIO	
SEE NOTE 1		P.C. BOARD MACHINING	
MATERIAL		MINOR LOOP V.C.O.	
WEIGHT PER PC		Y.F. LEE	
TYPE & TEMPER		SWITTEN	
HEAT TREAT. SPEC		CHECKED	
SEE NOTES 2 & 3		FINAL APPROVAL	
FINISH & SPEC. NO.		SHEET 2 OF 5	
		A11041-2 A	

ISSUE	ITEM	CHANGED FROM	DATE	CHK. NO.	DRAFTS	CHECKER	ENG. APP.	REQ.	ITEM	PART NO.	DESCRIPTION	SYMBOL
0		PROD. RELEASE	1/27/72		MAF		SDW	1	1	A 11041-3	PC. BD.	
								4	2	TE 127-2	STUD, TERMINAL	E170E4



NOTE: FOR TERMINAL STUD POSITIONS SEE DWG A11041-5.

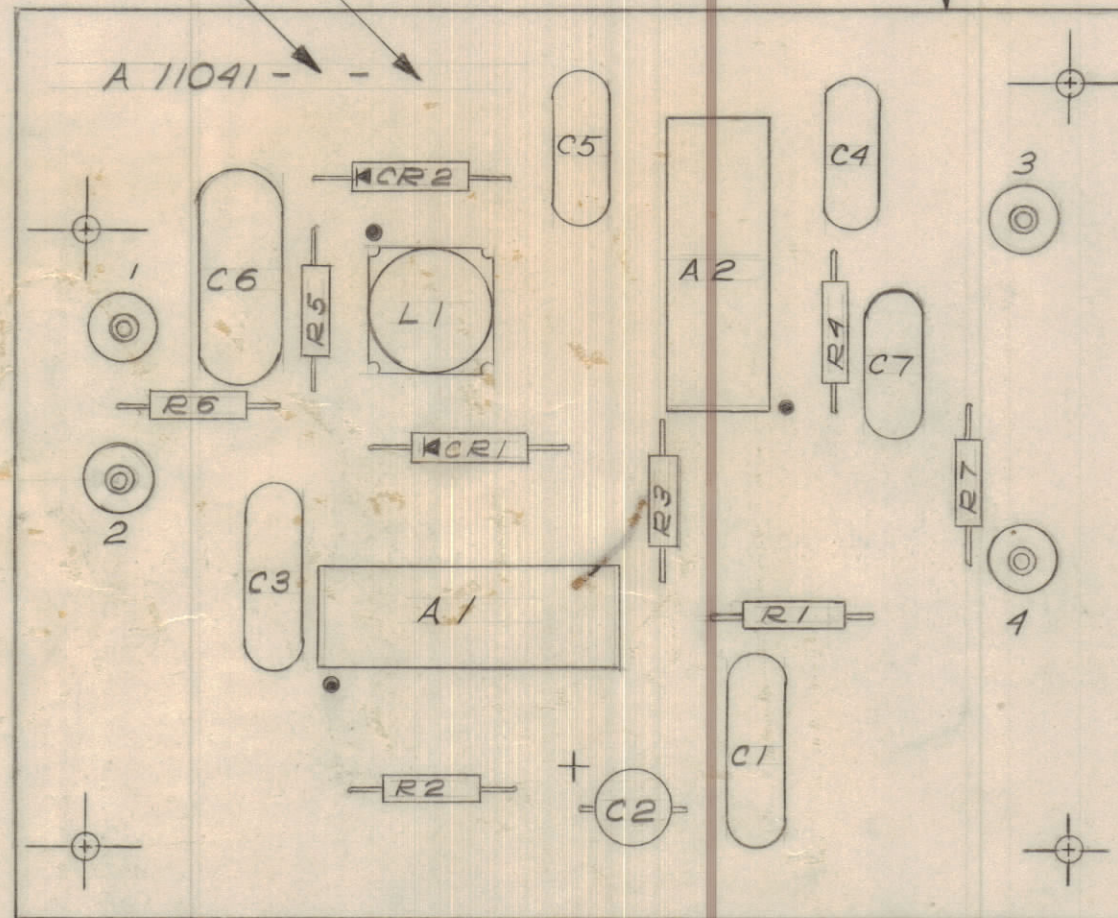
MODEL	PROJECT NO.	ISSY. NO.	DATE
MMX (1) 3	A 11041-5	3	APRIL 72
USED ON			
MAXIMUM ALLOWABLE TOLERANCES HAVE BEEN DETERMINED AND DEVIATIONS WILL BE CAUSE FOR REJECTION. REMOVE ALL BURRS AND SHARP EDGES.		IF IT IS FOUND DESIRABLE TO CHANGE ANY TOLERANCE OR OTHER DETAIL SPECIFIED ON THIS DRAWING NOTIFY THE PUNCHER PROMPTLY.	
TOLERANCES DEC. DIM. ± .005 FRACTIONAL DIM. ± .004 ANGULAR DIM. ± 0'30"		SCALE ~ DIMENSIONS IN INCHES UNLESS OTHERWISE SPECIFIED DRILL: PUNCH, CO. & MANUFACTURERS SIZES AND MANUFACTURERS TOLERANCES ARE NOT INCLUDED.	
ALL OTHERS		STOCK SIZE	
		MATERIAL	
		WEIGHT PER FT.	
		TYPE & TEMPER	
		HEAT TREAT. SPEC.	
		FINISH & SPEC. NO.	
T.M.C. (Canada) LIMITED OTTAWA ONTARIO		MINOR LOOP V.C.D.	
DRAWN C. CHARLES		ELEC. DES. APP. S. WITTEN	
CHECKED THOMAS		MECH. DES. APP.	
FINAL APPROVAL		SHT 4 of 5	
A 11041-40		26 CEMN SUPERSED BY 15 1973	

IF IT IS FOUND DESIRABLE TO CHANGE ANY TOLERANCE OR OTHER DETAIL SPECIFIED ON THIS DRAWING NOTIFY THE PURCHASER PROMPTLY.							DIMENSIONS IN INCHES UNLESS OTHERWISE SPECIFIED	
MAXIMUM ALLOWABLE TOLERANCES HAVE BEEN DETERMINED AND DEVIATIONS WILL BE CAUSE FOR REJECTION. REMOVE ALL BURRS AND SHARP EDGES.								
ISSUE	ITEM	CHANGED FROM	DATE	CN. NO.	DRAFTS	CHECKER	ENG. APP.	
X		ENG RELEASE	30 MAR 72			C.C. NAT		
X		ITEMS 6, 7, 20, REVISED	7 APRIL 72			C.C.		

REQ	ITEM	PART NO.	DESCRIPTION	USED ON	REMARKS
		A 11041-1	P.C. BOARD, ETCHING	A 11041-2	
		A 11041-2	P.C. BOARD, MACHINING	A 11041-3	
		A 11041-3	P.C. BOARD, LETTERING	A 11041-4	
1	1	A 11041-4	P.C. BOARD, SUB ASSEMBLY	A 11041-5	
	2				
1	3	CC 100-3	CAP. FXD., CERAMIC.	A 11041-5	C3
1	4	CC 100-14	CAP. FXD., CERAMIC	A 11041-5	C1
3	5	CC 100-29	CAP. FXD., CERAMIC	A 11041-5	C4, C5, C7
1	6	CE100M-47-10	CAP. SOLID TANT.	A 11041-5	C2
1	7	CM111E2207IS	CAP. FXD. MICA	A 11041-5	C6
	8				
1	9	CL10060	COIL, ASSEMBLY	A 11041-5	L1
	10				
1	11	RC07GF102J	RES. FXD., COMP	A 11041-5	R3
2	12	RC07GF103J	RES. FXD., COMP	A 11041-5	R4, R5
1	13	RC07GF182J	RES. FXD., COMP	A 11041-5	R1
1	14	RC07GF471J	RES. FXD., COMP	A 11041-5	R7
1	15	RC07GF472J	RES. FXD., COMP	A 11041-5	R2
1	16	RC07GF473J	RES. FXD., COMP	A 11041-5	R6
	17				
4	18	TE 127-2	STUD, TERMINAL	A 11041-4	
	19				
1	20	M6A7723393	INT. CKT. (FAIRCHILD)	A 11041-5	A1
1	21	MC1648 P	INT. CKT. (MOTOROLA)	A 11041-5	A2
	22				
2	23	MV 1404	DIODE (MOTOROLA)	A 11041-5	CR1, CR2
	24				
		CK 10854	SCHEMATIC		REF

ADD LATEST REVISION LETTER

ADD DASH NO.



Handwritten notes:
 s x
 by [unclear]

A 11041-5 X,

REDRAWN & REVISED
 SEE X2 1 MAY 72

TOLERANCES		SCALE: 2:1
ALL OTHERS	DEC. DIM. ± .X = .06 FRAC. DIM. ± 1/64 .XX = .01 ANGULAR DIM. ± 0° 30' .XXX = .005	DRILL, PUNCH, COMMERCIAL STOCK SIZES AND MANUFACTURERS TOLERANCES ARE NOT INCLUDED.

MMX () 3			30 MAR 72
MODEL	PROJECT NO.	ASS'Y. NO.	DATE

STOCK SIZE		TMC (Canada) LIMITED OTTAWA ONTARIO	
MATERIAL		P.C. BOARD ASSY.	
WEIGHT PER PC.		V.C.O.	
TYPE & TEMPER		C. CHARLES	
HEAT TREAT. SPEC.		DRAWN	ELEC. DES. APP.
FINISH & SPEC. NO.		THOMAS	MECH. DES. APP.
		CHECKED	FINAL APPROVAL
		SHEET 5 of 5 A 11041-5 X,	