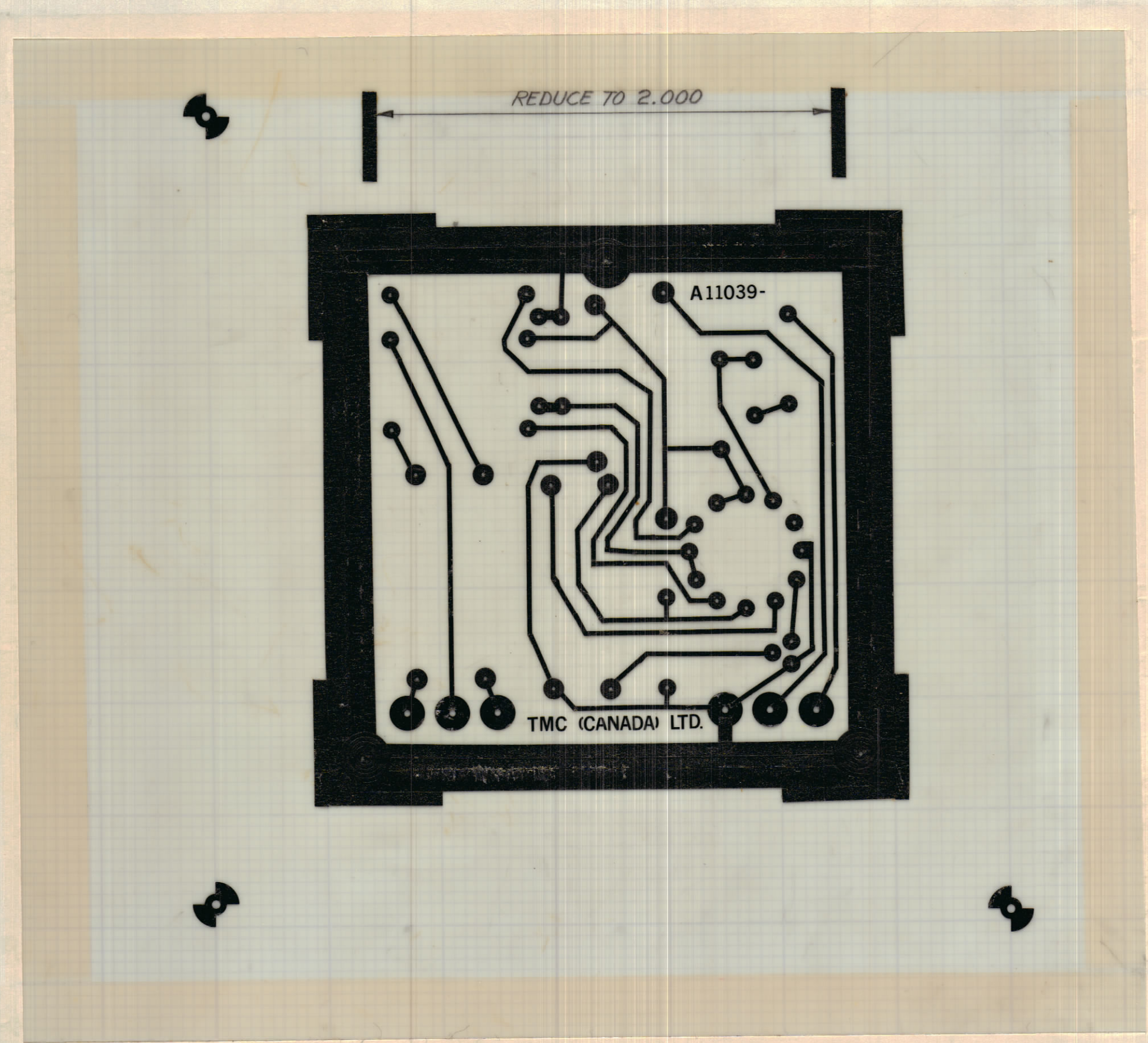


IF IT IS FOUND DESIRABLE TO CHANGE ANY TOLERANCE OR OTHER DETAIL SPECIFIED ON THIS DRAWING NOTIFY THE PURCHASER PROMPTLY.

MAXIMUM ALLOWABLE TOLERANCES HAVE BEEN DETERMINED AND DEVIATIONS WILL BE CAUSE FOR REJECTION. REMOVE ALL BURRS AND SHARP EDGES.

DIMENSIONS IN INCHES UNLESS OTHERWISE SPECIFIED

ISSUE	ITEM	CHANGED FROM	DATE	CN. NO.	DRAFTS	CHECKER	ENG. APP.
X		ENG. RELEASE	13 MAR 72		TH	NAT.	
X <sub>1</sub>		SEE SHEET 5	30 MAY 72		C.C.	4B	
X <sub>2</sub>		SEE SHEET 5	8 AUG 72		C.C.		



A-11039-1 X<sub>2</sub>

PHOTOGRAPH THIS SIDE

TOLERANCES		SCALE: 2:1
ALL OTHERS	DEC. DIM. ± 1/64 FRAC. DIM. ± 1/64 ANGULAR DIM. ± 0° 30'	.X = .05 .XX = .01 .XXX = .005
DRILL, PUNCH, COMMERCIAL STOCK SIZES AND MANUFACTURERS TOLERANCES ARE NOT INCLUDED.		

MODEL	PROJECT NO.	ASSY. NO.	DATE
		A-11039-5	13 MARCH 72
USED ON			

STOCK SIZE		TMC (Canada) LIMITED OTTAWA ONTARIO		
MATERIAL		LINE AMPLIFIER		
WEIGHT PER PC.		PRINTED CIRCUIT BOARD		
TYPE & TEMPER		T. HARTMAN		
HEAT TREAT. SPEC.		DRAWN	ELEC. DES. APP.	MECH. DES. APP.
FINISH & SPEC. NO.		NAT		
		CHECKED	FINAL APPROVAL	
		SHT. 1 OF 5 A-11039-1 X <sub>2</sub>		

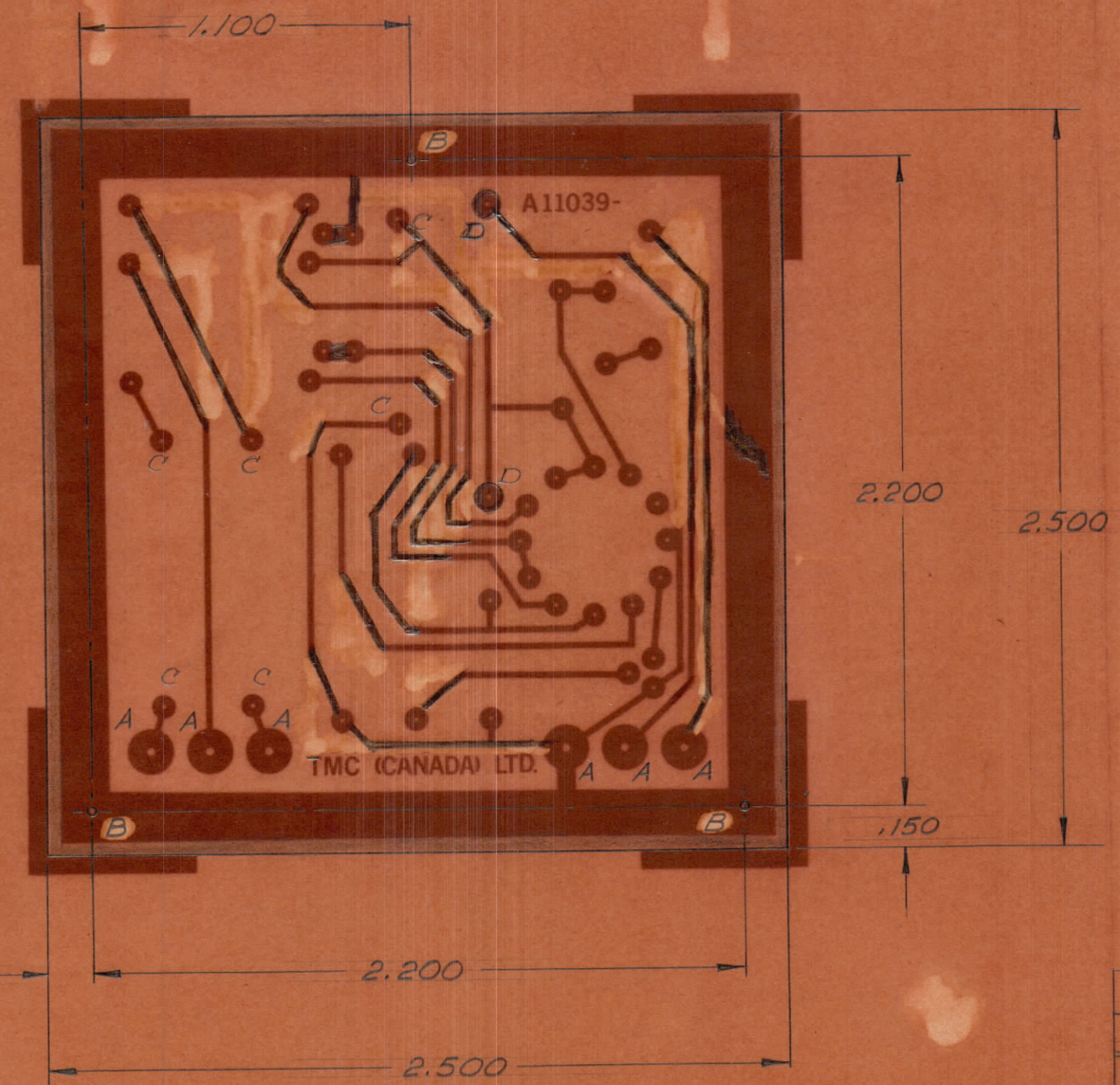


IF IT IS FOUND DESIRABLE TO CHANGE ANY TOLERANCE OR OTHER DETAIL SPECIFIED ON THIS DRAWING NOTIFY THE PURCHASER PROMPTLY.

MAXIMUM ALLOWABLE TOLERANCES HAVE BEEN DETERMINED AND DEVIATIONS WILL BE CAUSE FOR REJECTION REMOVE ALL BURRS AND SHARP EDGES

DIMENSIONS IN INCHES UNLESS OTHERWISE SPECIFIED

ISSUE	ITEM	CHANGED FROM	DATE	CH. NO.	DRAFTS	CHECKER	ENG. APP.
X	1	ENG. RELEASE	28 MAR 72		WAT	LB	
X <sub>1</sub>		SEE SHEET 5	30 MAY 72		C.C.	LB	
X <sub>2</sub>		SEE SHEET 5	8 AUG 72		C.C.	LB	



A-11039-2 X<sub>2</sub>

HOLE	DESCRIPTION	QTY
A	.081 DIA	6
B	.189 DIA	3
C	.046 DIA	6
D	.067 DIA	2
UNMARKED	.037 DIA.	~

3. FINISH: TIN LEAD PLATE, .0003 THK MIN.
2. MATERIAL: EPOXY-GLASS LAMINATE, G10; FL-GE-.062-C1.
1. BOARD TO BE IN ACCORDANCE WITH TMC SPEC 3-735

NOTES:

STOCK SIZE		TMC (Canada) LIMITED OTTAWA ONTARIO	
MATERIAL		LINE AMPLIFIER	
WEIGHT PER PC.		PRINTED CIRCUIT BOARD	
TYPE & TEMPER	THOMAS	PROCTOR	
HEAT TREAT SPEC	CHECKED	FINAL APPROVAL	
FINISH & SPEC. NO.	SHT. 2 OF 5		A-11039-2 X <sub>2</sub>

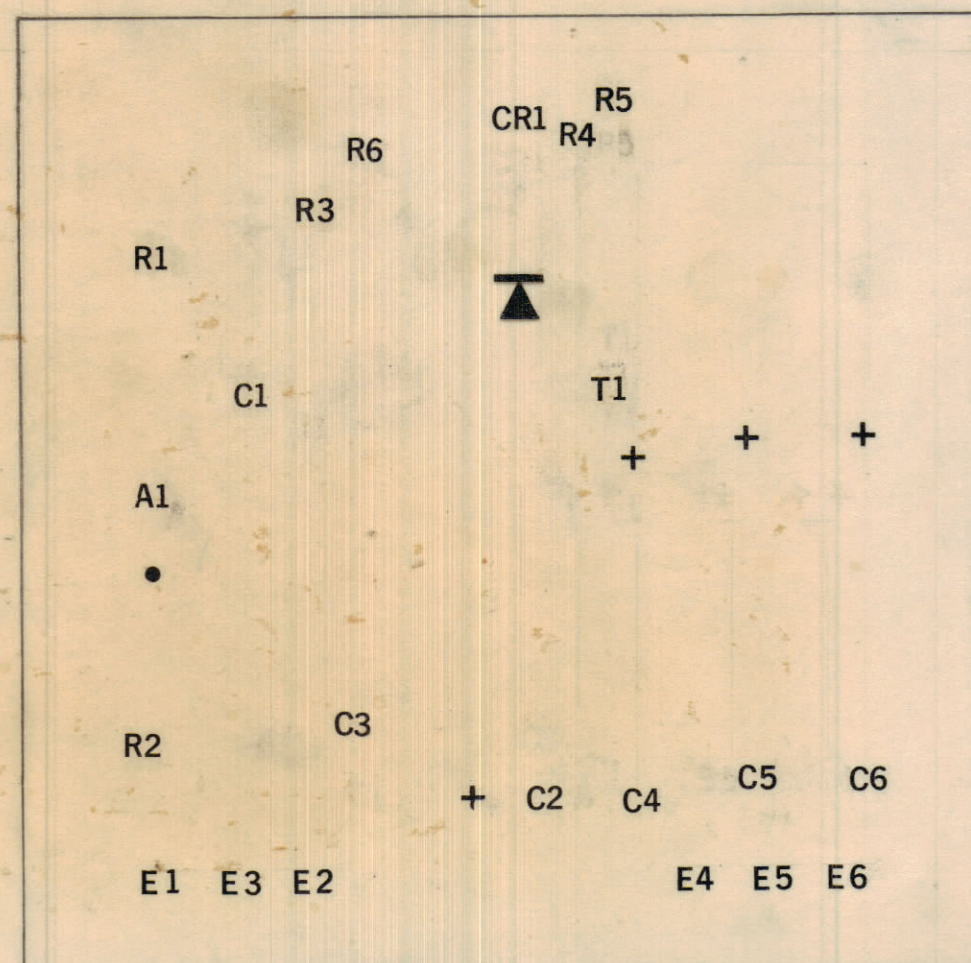
MODEL	PROJECT NO.	ASSY. NO.	DATE
		A-11039-5	13 MARCH 72

TOLERANCES		SCALE: 2:1
ALL DEC DIM	± .005	DRILL, PUNCH, COMMERCIAL STOCK
OTHERS	± .01	SIZES AND MANUFACTURERS
ANGULAR DIM	± 30'	TOLERANCES ARE NOT INCLUDED



IF IT IS FOUND DESIRABLE TO CHANGE ANY TOLERANCE OR OTHER DETAIL SPECIFIED ON THIS DRAWING NOTIFY THE PURCHASER PROMPTLY.		DIMENSIONS IN INCHES UNLESS OTHERWISE SPECIFIED					
MAXIMUM ALLOWABLE TOLERANCES HAVE BEEN DETERMINED AND DEVIATIONS WILL BE CAUSE FOR REJECTION. REMOVE ALL BURRS AND SHARP EDGES.							
ISSUE	ITEM	CHANGED FROM	DATE	CN. NO.	DRAFTS	CHECKER	ENG. APP.
X		ENG. RELEASE	14-3 72		TH	LMT	
X <sub>1</sub>		SEE SHEET 5	30 MAY 72		C.C.	LB	
X <sub>2</sub>		SEE SHEET 5	8 AUG 72		C.C.		

REQ.	ITEM	PART NO.	DESCRIPTION	SYMBOL
------	------	----------	-------------	--------



A-11039-3 X<sub>2</sub>

2. PAINT COLOUR: WHITE  
 1. LETTER IN ACCORDANCE WITH TMC SPEC. S-735  
 NOTES:

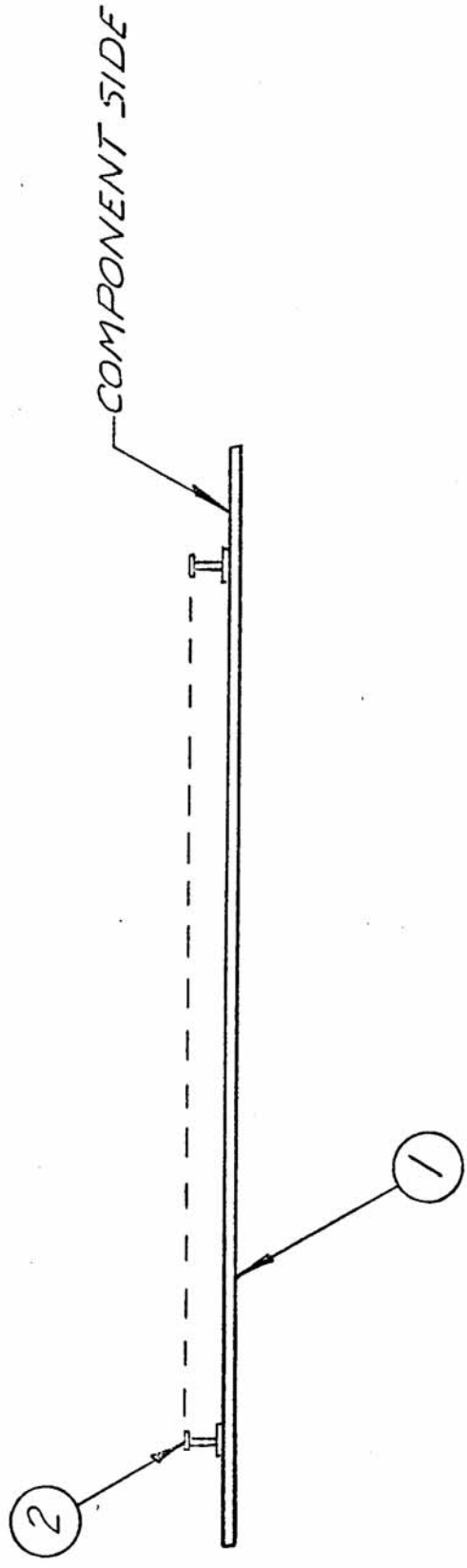
TOLERANCES		SCALE: 2:1
ALL OTHERS	DEC. DIM. ± .05 FRAC. DIM. ± 1/64 ANGULAR DIM. ± 0° 30'	DRILL, PUNCH, COMMERCIAL STOCK SIZES AND MANUFACTURERS TOLERANCES ARE NOT INCLUDED.

MODEL	PROJECT NO.	ASS'Y. NO.	DATE
		A-11039-5	14 MARCH '72

STOCK SIZE		TMC (Canada) LIMITED OTTAWA ONTARIO	
MATERIAL		LINE AMPLIFIER	
WEIGHT PER PC.		PRINTED CIRCUIT BOARD	
TYPE & TEMPER.		T. HARTMAN	
DRAWN		ELEC. DES. APP.	
CHECKED		MECH. DES. APP.	
HEAT TREAT. SPEC.		FINAL APPROVAL	
FINISH & SPEC. NO.		SHT. 3 OF 5 A-11039-3 X <sub>2</sub>	



ISSUE	ITEM	CHANGED FROM	DATE	CN. NO.	DRAFTS	CHECKER	ENB. APP.	REQ.	ITEM	PART NO.	DESCRIPTION	SYMBOL
X		ENG. RELEASE	13-3 72		TH	M.H.		1	1	A-11039-3	PC. BD.	
X <sub>1</sub>		SEE SHEET 5	30 MAY 72		C.C.	B		6	2	TE127-2	STUD, TERMINAL	
X <sub>2</sub>		SEE SHEET 5	8 MAY 72		C.C.							



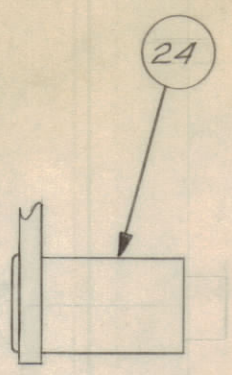
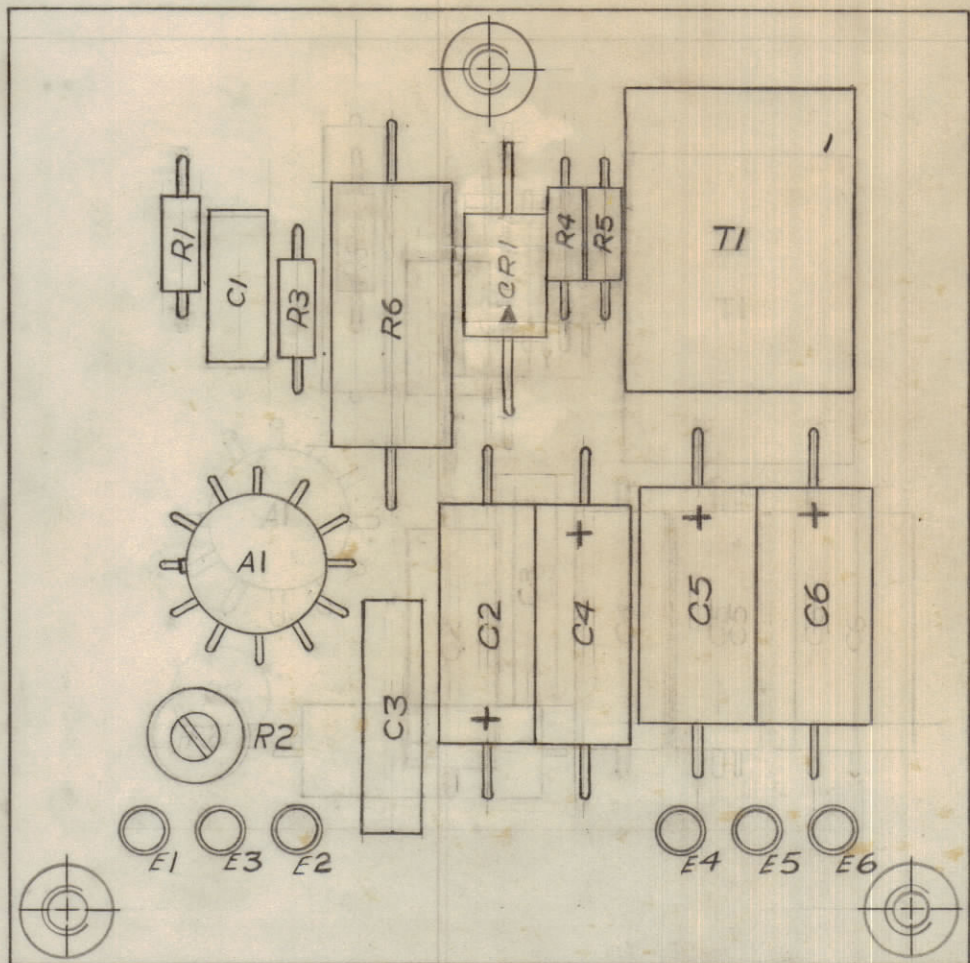
NOTE: FOR TERMINAL STUD POSITIONS SEE DWG A-11039-5.

MODEL		PROJECT NO.	A-11039-5	DATE	19 MARCH '72
TMC (Canada) LIMITED OTTAWA		T.M.C. (Canada) LIMITED ONTARIO			
LINE AMPLIFIER		- SUB, ASSY -			
T. HARTMAN		DRAWN ELEC. DES. APP.			
NAT		CHECKED MECH. DES. APP.			
SHT 4 of 5		FINAL APPROVAL A-11039-4 X <sub>2</sub>			
MAXIMUM ALLOWABLE TOLERANCES HAVE BEEN DETERMINED AND DEVIATIONS WILL BE CAUSE FOR REJECTION. REMOVE ALL BURRS AND SHARP EDGES		IF IT IS FOUND DESIRABLE TO CHANGE ANY TOLERANCE OR OTHER DETAIL SPECIFIED ON THIS DRAWING NOTIFY THE PURCHASER PROMPTLY.			
TOLERANCES		SCALE			
DEC. DIM. ± .06		DIMENSIONS IN INCHES			
FRAC. DIM. ± 1/64		UNLESS OTHERWISE SPECIFIED			
ANGULAR DIM. ± 0°30'		DRILL, PUNCH, COMMERCIAL STOCK SIZES AND MANUFACTURERS TOLERANCES ARE NOT INCLUDED.			
ALL OTHERS		: .XX = .01 : .XXX = .005			



IF IT IS FOUND DESIRABLE TO CHANGE ANY TOLERANCE OR OTHER DETAIL SPECIFIED ON THIS DRAWING NOTIFY THE PURCHASER PROMPTLY.							DIMENSIONS IN INCHES UNLESS OTHERWISE SPECIFIED	
MAXIMUM ALLOWABLE TOLERANCES HAVE BEEN DETERMINED AND DEVIATIONS WILL BE CAUSE FOR REJECTION. REMOVE ALL BURRS AND SHARP EDGES.								
ISSUE	ITEM	CHANGED FROM	DATE	CN. NO.	DRAFTS	CHECKER	ENG. APP.	
X		ENG. RELEASE	15 MAR 72		TH	NAT.		
X <sub>1</sub>		VALUE OF R4, R5 CHANGED FROM 1.0. VALUE OF R1 ADDED. TRACKS REVISED. HOLE SIZES FOR R6, C1, C2, C4, C5, C6, INCREASED. "B" HOLES INCREASED TO .189 DIA. ITEM 24 ADDED	30 MAY 72		CC	4B	<i>[Signature]</i>	
X <sub>2</sub>		ITEM 5, 6, 13 AND 14, VALUES CHANGED	8 AUG 72		CC	<i>[Signature]</i>	<i>[Signature]</i>	

REQ.	ITEM	PART NO.	DESCRIPTION	USED ON	REMARKS
1		A-11039-1	P.C. BD. ETCH.	A-11039-2	
1		A-11039-2	P.C. BD. MACHINING	A-11039-3	
1		A-11039-3	P.C. BD. LETTERING	A-11039-4	
1		A-11039-4	P.C. BD. SUB-ASSEMBLY	A-11039-5	
1	1	A-11039-5	P.C. BD. ASSEMBLY		
	2				
1	3	CA3020A	AMP.		A1
	4				
1	5	CC100-44	CAP.		C3
1	6	CE100/4-1-35	CAP.		C1
	7				
1	8	CE105-1-15	CAP.		C2
1	9	CE105-2-15	CAP.		C4
2	10	CE105-10-15	CAP.		C5, C6
	11				
2	12	RC07GF2R7J	RESISTOR		R4, R5
1	13	RC42GF221J	RESISTOR		R6
1	14	RC07GF121J	RESISTOR		R1
1	15	RC07GF514J	RESISTOR		R3
1	16	RV124-1-502	RESISTOR, VAR. COMP		R2
	17				
1	18	TR10013	TRANSFORMER		T1
	19				
1	20	1N3019	DIODE, ZENER		CR1
	21				
6	22	TE-127-2	STUD, TERMINAL	A-11039-4	
	23				
3	24	TE-164-11	NUT, PLAIN, CLINCH	A-11039-5	
	25				
		CK10851	SCHEMATIC DIAGRAM	A-11039-5	REF.



A-11039-5 X<sub>2</sub>

REF: CK10851 SCHEMATIC DIAGRAM

TOLERANCES		SCALE: 2:1
ALL OTHERS	DEC. DIM. ± .05 FRAC. DIM. ± 1/64 ANGULAR DIM. ± 0° 30'	DRILL, PUNCH, COMMERCIAL STOCK SIZES AND MANUFACTURERS TOLERANCES ARE NOT INCLUDED.

ITT R/E	PROJECT NO.	ITT R/E MAIN ASSY	15 MARCH '72
MODEL		ASS'Y. NO.	DATE

STOCK SIZE		TMC (Canada) LIMITED OTTAWA ONTARIO	
MATERIAL		LINE AMPLIFIER	
WEIGHT PER PC.		PRINTED CIRCUIT BOARD	
TYPE & TEMPER		T. HARTMAN <i>[Signature]</i>	
HEAT TREAT. SPEC.		NAT.	
FINISH & SPEC. NO.		SHT 5 OF 5 A-11039-5 X <sub>2</sub>	