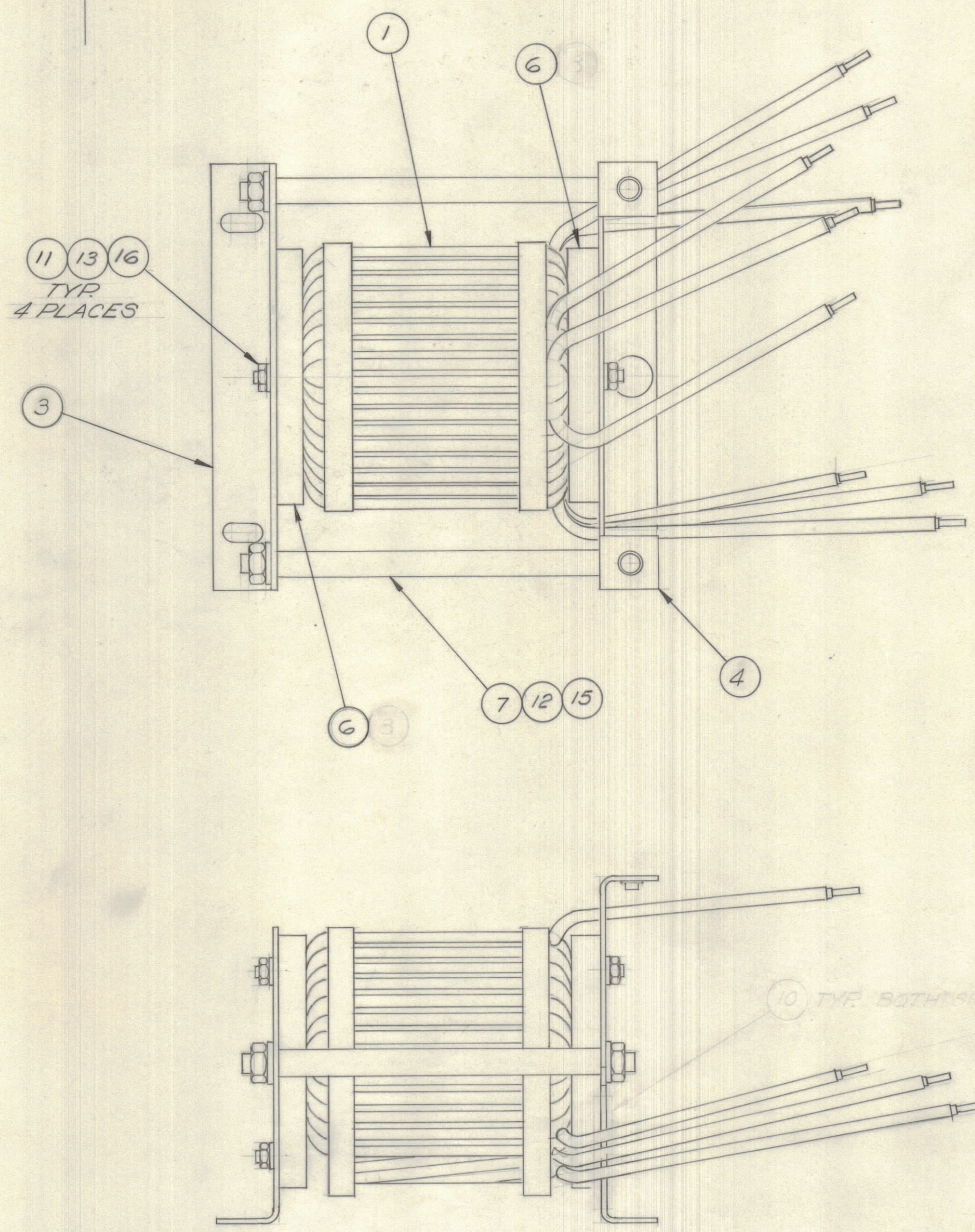


IF IT IS FOUND DESIRABLE TO CHANGE ANY TOLERANCE OR OTHER DETAIL SPECIFIED ON THIS DRAWING NOTIFY THE PURCHASER PROMPTLY.

DIMENSIONS IN INCHES UNLESS OTHERWISE SPECIFIED

MAXIMUM ALLOWABLE TOLERANCES HAVE BEEN DETERMINED AND DEVIATIONS WILL BE CAUSE FOR REJECTION. REMOVE ALL BURRS AND SHARP EDGES.

ISSUE	ITEM	CHANGED FROM	DATE	CN. NO.	DRAFTS	CHECKER	ENGR. APP.
X		EUG. RELEASE	1 NOV 71		LAT	LB	



REQ.	ITEM	PART NO.	DESCRIPTION	USED ON	REMARKS
1	1	CL10056	TANK COIL ASSY	A11015	
	2				
1	3	MS11127	PLATE, COIL MOUNTING	A11015	
1	4	MS11339	PLATE, COIL MOUNTING	A11015	
	5				
2	6	PM10103	SPACER, TOROID	A11015	
2	7	PM10118	TIE ROD, TOROID	A11015	
2	8	PM10174	SPIGOT	PM10103	
	9				
	10				
4	11	FW101-1	WASHER, FLAT NYLON	A11015	
4	12	LWE25M33	WASHER, LOCK TOOTH	A11015	
4	13	NT137-0632	NUT, HEX, NYLON	A11015	
2	14	NT10002-2	NUT, LOCK, CLINCH	MS11339	
4	15	NTH25205314	NUT, HEX	A11015	
4	16	SCI43-0632-B10	SCREW, MACH, NYLON	A11015	
	17				
	18				
	19				
	20				

A11015 X

TOLERANCES			SCALE: 1/1
ALL	DEC. DIM. ±	.X = .08	DRILL, PUNCH, COMMERCIAL STOCK
OTHERS	FRAC. DIM. ± 1/64	.XX = .01	SIZES AND MANUFACTURERS
	ANGULAR DIM. ± 0° 30'	.XXX = .005	TOLERANCES ARE NOT INCLUDED.

LPA 1KD	155171	A10788	1 NOV 71
MODEL	PROJECT NO.	ASS'Y. NO.	DATE

TMC (Canada) LIMITED OTTAWA ONTARIO			
TOROID ASSEMBLY			
MATERIAL	WEIGHT PER PC.		
TYPE & TEMPER	THOMAS		
HEAT TREAT. SPEC.	L. BROWN	ELEC. DES. APP.	MECH. DES. APP.
FINISH & SPEC. NO.		CHECKED	FINAL APPROVAL
			A11015 X