

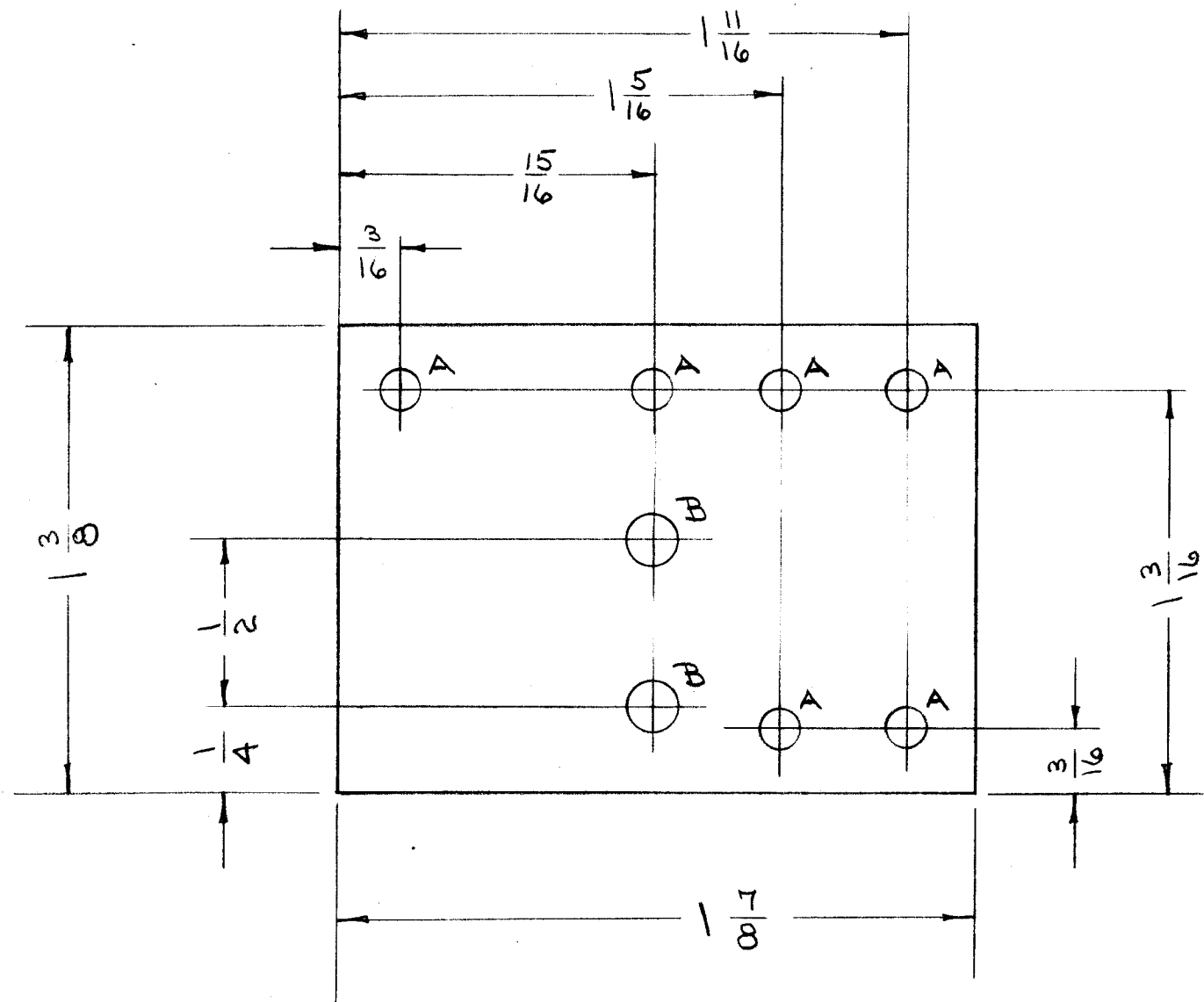
IF IT IS FOUND DESIRABLE TO CHANGE ANY TOLERANCE OR OTHER DETAIL SPECIFIED ON THIS DRAWING NOTIFY THE PURCHASER PROMPTLY.

MAXIMUM ALLOWABLE TOLERANCES HAVE BEEN DETERMINED AND DEVIATIONS WILL BE CAUSE FOR REJECTION. REMOVE ALL BURRS AND SHARP EDGES

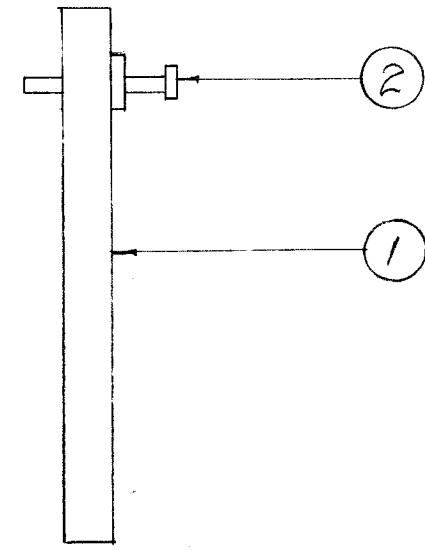
RELEASED

MAR 20 1953

A-1180 A



A- NO. 31 (.120) DRILL 6 REQ'D.
 B- 9/64 (.140) D. 2 REQ'D.



NOTICE TO PERSONS RECEIVING THIS DRAWING

THE TECHNICAL MATERIEL CORPORATION claims proprietary right in the material disclosed hereon. This drawing is issued in confidence for engineering information only and may not be reproduced or used to manufacture anything shown hereon without permission from THE TECHNICAL MATERIEL CORPORATION to the user. This drawing is loaned for mutual assistance and is subject to recall at any time.

Property of:
 THE TECHNICAL MATERIEL CORPORATION
 MAMARONECK, NEW YORK

6	2	TE-131-4	TERMINAL MIDGET	
1	1	PX-167	TERMINAL BOARD (NO DWG.)	
REQ.	ITEM	PART NO.	DESCRIPTION	SYMBOL
1/8 THICK			THE TECHNICAL MATERIEL CORP.	
STOCK SIZE			MAMARONECK. NEW YORK	
PHENOLIC		#	BOARD, TERMINAL	
MATERIAL		WEIGHT PER PC.	BFO	
XXXP LAMINATE			C.D.D. 3/20/53	
TYPE & TEMPER			DRAWN	ELEC. DES. APP. MECH. DES. APP.
			WDE	
HEAT TREAT. SPEC.			CHECKED	FINAL APPROVAL
FINISH & SPEC. NO.			A-1180	

A	1	ITEM 2 WAS 7 REQ'D	6.16.64	11575	A.M.	W	W
ISSUE	ITEM	CHANGED FROM	DATE	CN. NO.	DRAFTS	CHECKER	ENG. APP.
TOLERANCES		SCALE: 1/8" = 1"					
ALL OTHERS		DRILL, PUNCH, COMMERCIAL STOCK SIZES AND MANUFACTURERS TOLERANCES ARE NOT INCLUDED.					

FFR	174	A-465	3-20-53
MODEL	PROJECT NO.	ASS'Y. NO.	DATE
USED ON			