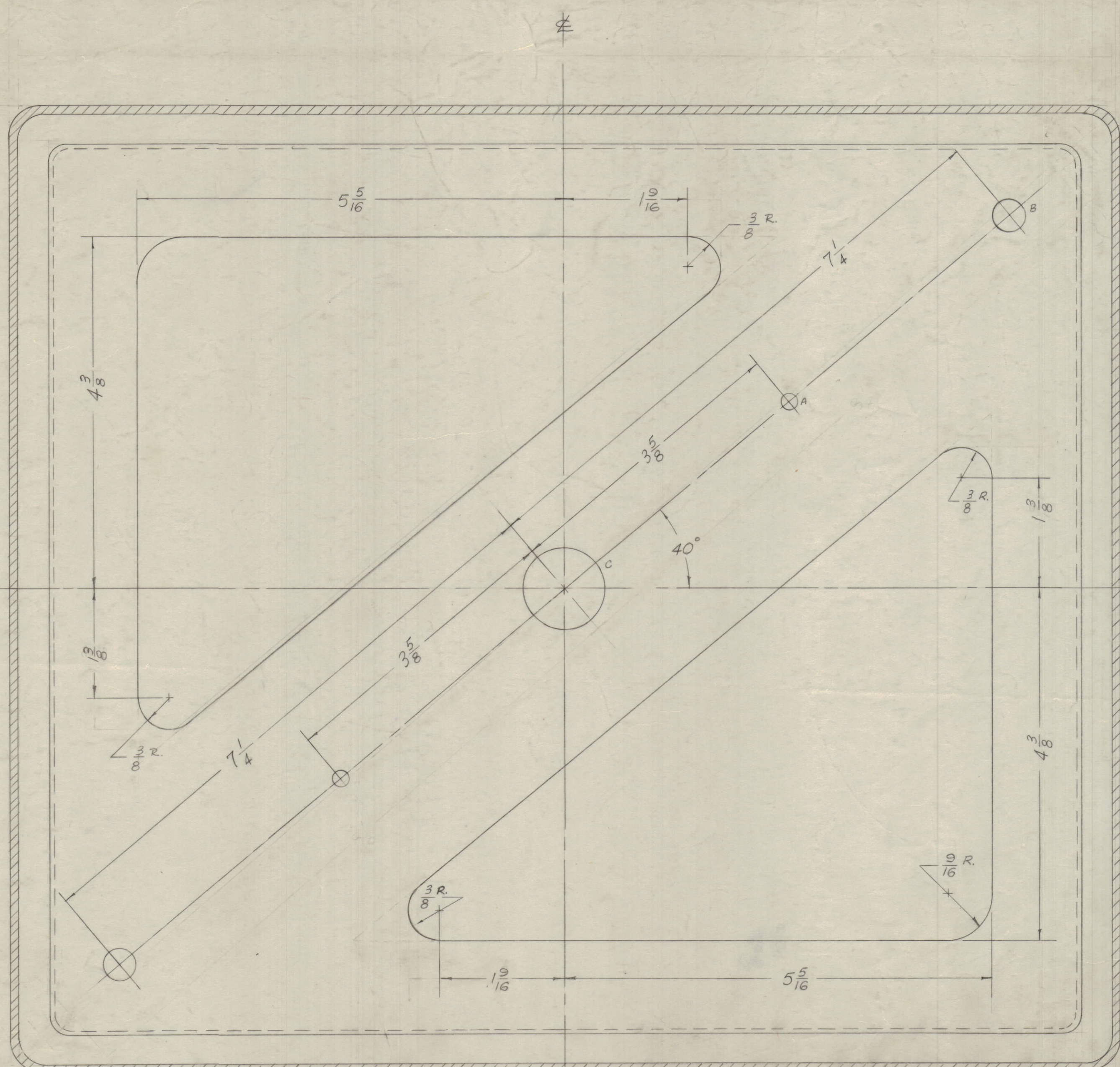


IF IT IS FOUND DESIRABLE TO CHANGE ANY TOLERANCE OR OTHER DETAIL SPECIFIED ON THIS DRAWING NOTIFY THE PURCHASER PROMPTLY.
 MAXIMUM ALLOWABLE TOLERANCES HAVE BEEN DETERMINED AND DEVIATIONS WILL BE CAUSE FOR REJECTION. REMOVE ALL BURRS AND SHARP EDGES

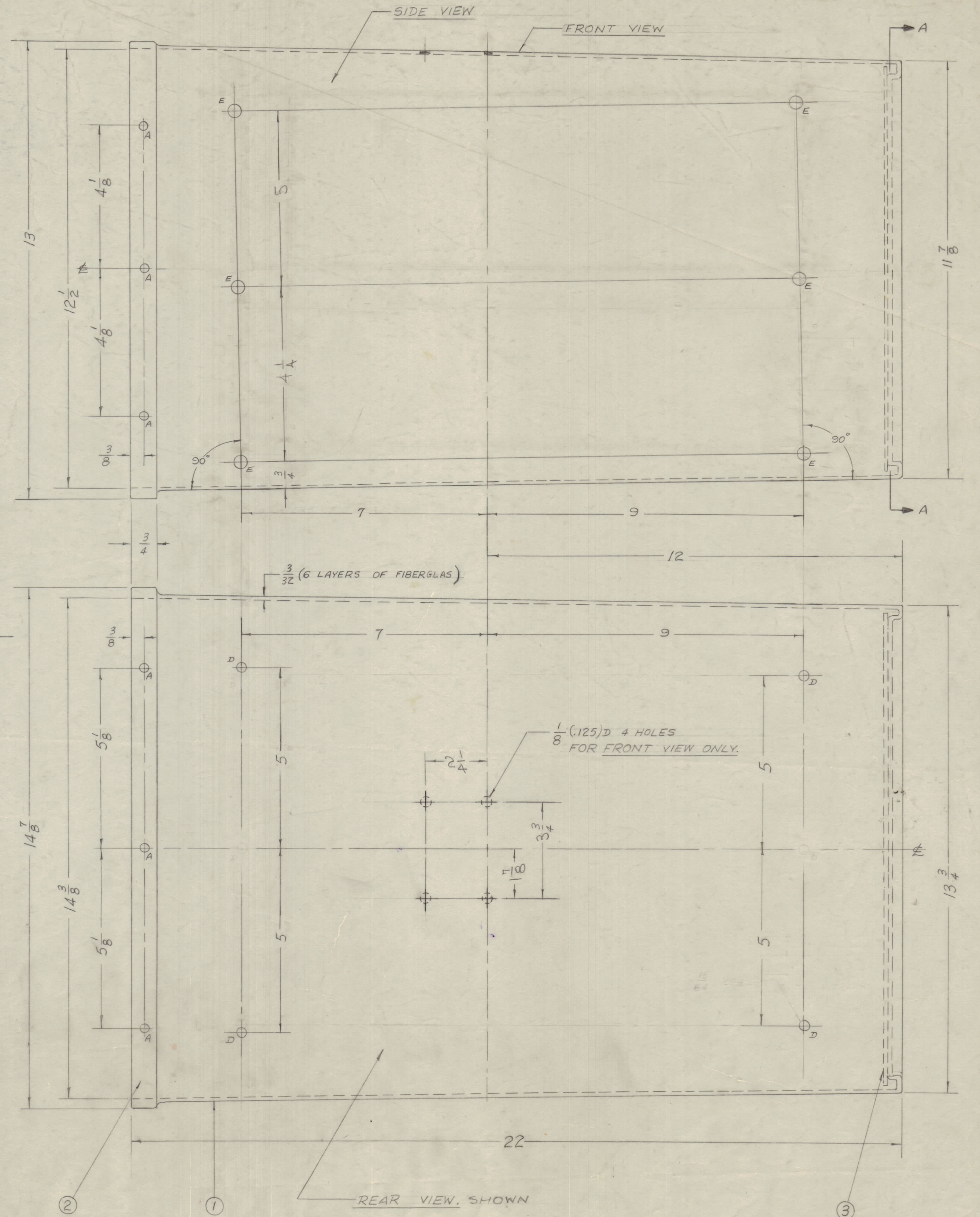


FRONT
SECTION A-A

- A- $\frac{3}{16}$ (.187) D. 14 HOLES REQ'D.
- B- $\frac{3}{8}$ (.375) D. 2 " "
- C- 1 (1.000) D. 1 " "
- D- $\frac{13}{64}$ (.203) D. 4 " "
- E- $\frac{15}{64}$ (.234) 12 " "

NOTICE TO PERSONS RECEIVING THIS DRAWING
 THE TECHNICAL MATERIEL CORPORATION claims proprietary right in the material disclosed hereon. This drawing is issued in confidence for engineering information only and may not be reproduced or used to manufacture anything shown hereon without permission from THE TECHNICAL MATERIEL CORPORATION to the user. This drawing is loaned for mutual assistance and is subject to recall at any time.

Property of:
 THE TECHNICAL MATERIEL CORPORATION
 MAMARONECK, NEW YORK



REAR VIEW, SHOWN

ISSUE	ITEM	CHANGED FROM	DATE	DN. NO.	DRAFTS	CHECKER	ENG. APP.
B	3	2/A WAS 1/4	3/20/56	2	ESS	JAL	WJ
	2	1/8 " 1/8					
	1	3/4 " 2/4					
A	1	5 WAS 3/16 TURN D HOLES OUT	9/16/56	1	ESS	JAL	WJ

SCALE:
 DRILL, PUNCH, COMMERCIAL STOCK
 SIZES AND MANUFACTURERS
 TOLERANCES ARE NOT INCLUDED.

REQ. PER UNIT	MODEL	PROJECT NO.	ASSY. NO.	DATE
1	TER-3500-300		A-1223	2-9-61
1	TER-500-70		A-1223	10-23-57
1	TER-3500-70		A-1223	10-23-57
1	TER-500		A-1223	8-21-56
1	TER-3500		A-1223	1-26-56

REQ. ITEM	PART NO.	DESCRIPTION	SYMBOL
1	3 MS-761	BOTTOM SHIELD (ND)	
1	2 MS-740	TOP RING	
#	1	FIBERGLAS	

3/32 THK
 STOCK SIZE
 FIBERGLAS -4
 MATERIAL WEIGHT PER PC
 TYPE & TEMPER
 HEAT TREAT. SPEC.
 TMC GRAY
 FINISH & SPEC. NO.

THE TECHNICAL MATERIEL CORP.
 MAMARONECK, NEW YORK
 CASE SUB ASSEMBLY
 TER SERIES
 DRAWN: RLB
 ELEC. DES. APP.: RLB
 MECH. DES. APP.: WJ
 CHECKED: WJ
 FINAL APPROVAL: WJ
 A-1156

A-1156
B