

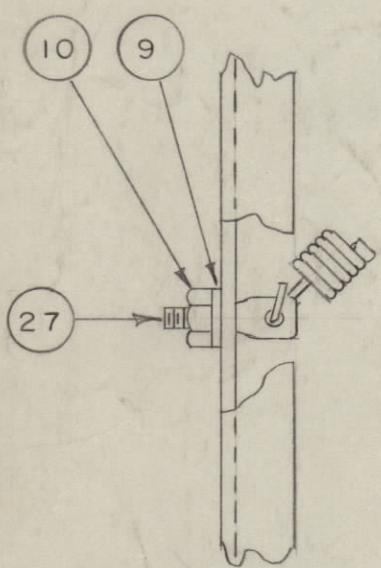
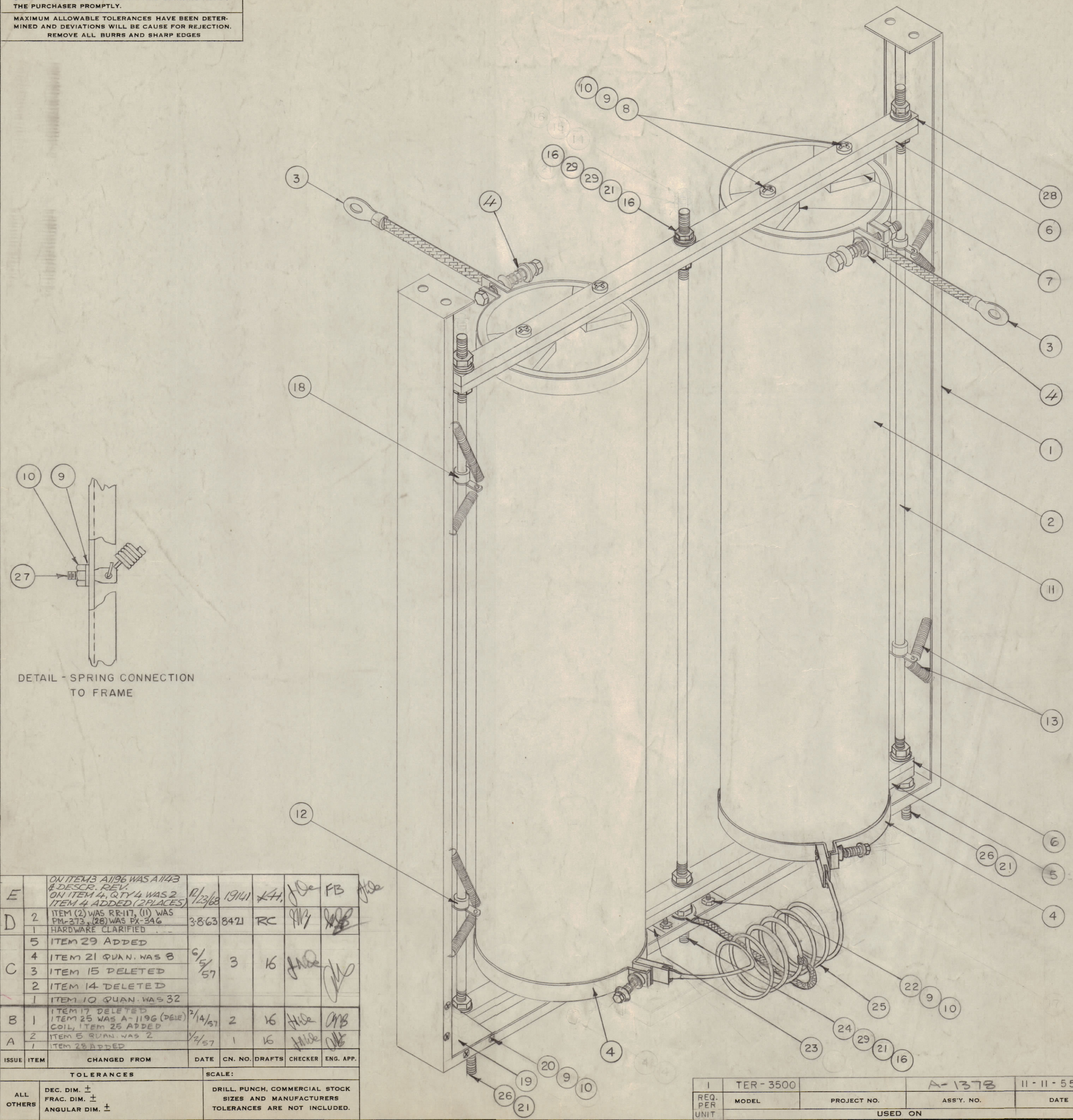
IF IT IS FOUND DESIRABLE TO CHANGE ANY TOLERANCE OR OTHER DETAIL SPECIFIED ON THIS DRAWING NOTIFY THE PURCHASER PROMPTLY.

MAXIMUM ALLOWABLE TOLERANCES HAVE BEEN DETERMINED AND DEVIATIONS WILL BE CAUSE FOR REJECTION. REMOVE ALL BURRS AND SHARP EDGES

NOTICE TO PERSONS RECEIVING THIS DRAWING

THE TECHNICAL MATERIEL CORPORATION claims proprietary right in the material disclosed hereon. This drawing is issued in confidence for engineering information only and may not be reproduced or used to manufacture anything shown hereon without permission from THE TECHNICAL MATERIEL CORPORATION to the user. This drawing is loaned for mutual assistance and is subject to recall at any time.

Property of:
THE TECHNICAL MATERIEL CORPORATION
 MAMARONECK, NEW YORK



DETAIL - SPRING CONNECTION TO FRAME

13	29	FW25HBN	WASHER, FLAT
1	28	PX-346-2	SUPPORT, TOP
16	27	SC-106-1	LUG, SPADE
2	26	SCHH2520BN12	SCREW, HEX HEAD
1	25	A-1376	COIL ASSY.
1	24	SCHH2520BN16	SCREW, HEX HEAD
1	23	PX-316	INSULATOR, C.T.
4	22	SCFP0632BN8	SCREW, MACHINE

A-1145 E

9	21	LWE25MRN	LOCKWASHER
8	20	SCFP0632BN6	SCREW, MACHINE
2	19	MS-766	GUSSET, RESISTOR BRACKET
2	18	MC-105-1	COUPLING
1	17	MS-747	JUMPER (Deleted)
13	16	NTH2528BN14	NUT, HEX
3	15	WA-118-4	WASHER, CUP (Deleted)
3	14	SP-118	SPRING (Deleted)
16	13	SP-124	SPRING
2	12	MC-105-2	COUPLING
3	11	PM-373-1	ROD, SUPPORT
36	10	NTH0632BN10	NUT, HEX.
36	9	LWE06MRN	LOCKWASHER
8	8	SCBP0632BN16	SCREW, MACHINE
8	7	PX-314	SUPPORT, INSIDE
2	6	PX-315	INSULATOR,
1	5	PM-374	SUPPORT, BOTTOM
4	4	A-1144	CONTACT STRAP ASSY., BOTTOM
2	3	A-1196	CONTACT STRAP, CONN. TOP
2	2	RR-117-320	RESISTOR
1	1	MS-745	MAIN SUPPORT, RESISTOR

E		ON ITEM 3 A-1196 WAS A-1143 & DESCR. REV. ON ITEM 4, QTY 4 WAS 2 ITEM 4 ADDED (2 PLACES)	12/23/68	19141	X41	J De	FB	Joe
D	2	ITEM (2) WAS RR-117, (1) WAS PM-373, (28) WAS PX-346	3-8-63	8421	RC	RR	RR	RR
	1	HARDWARE CLARIFIED						
	5	ITEM 29 ADDED						
C	4	ITEM 21 QUAN. WAS 8	6/2/57	3	16	J De		J De
	3	ITEM 15 DELETED						
	2	ITEM 14 DELETED						
	1	ITEM 10 QUAN. WAS 32						
B	1	ITEM 17 DELETED ITEM 25 WAS A-1196 (DELE) COIL, ITEM 25 ADDED	2/14/57	2	16	Joe	ARB	ARB
A	2	ITEM 5 QUAN. WAS 2	1/4/57	1	16	Joe	ARB	ARB
	1	ITEM 28 ADDED						

ALL OTHERS	DEC. DIM. ± FRAC. DIM. ± ANGULAR DIM. ±	SCALE: DRILL, PUNCH, COMMERCIAL STOCK SIZES AND MANUFACTURERS TOLERANCES ARE NOT INCLUDED.
------------	---	---

1	TER-3500	A-1378	11-11-55	
REQ. PER UNIT	MODEL	PROJECT NO.	ASSY. NO.	DATE
				USED ON

REQ. ITEM	PART NO.	DESCRIPTION	SYMBOL
THE TECHNICAL MATERIEL CORP. MAMARONECK, NEW YORK			
RESISTOR SUPPORT			
SUB-ASSY.			
DRAWN		ELEC. DES. APP.	
CHECKED		MECH. DES. APP.	
HEAT TREAT. SPEC.		FINAL APPROVAL	
FINISH & SPEC. NO.		A-1145 E	